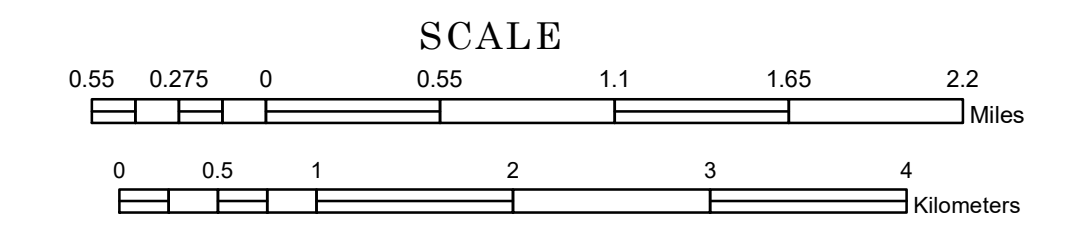


TOWNSHIP OF SCANDIA VALLEY

PREPARED BY THE
MINNESOTA DEPARTMENT OF TRANSPORTATION
OFFICE OF TRANSPORTATION SYSTEM MANAGEMENT

IN COOPERATION WITH
U.S. DEPARTMENT OF TRANSPORTATION
FEDERAL HIGHWAY ADMINISTRATION



1 in = 3,200 ft

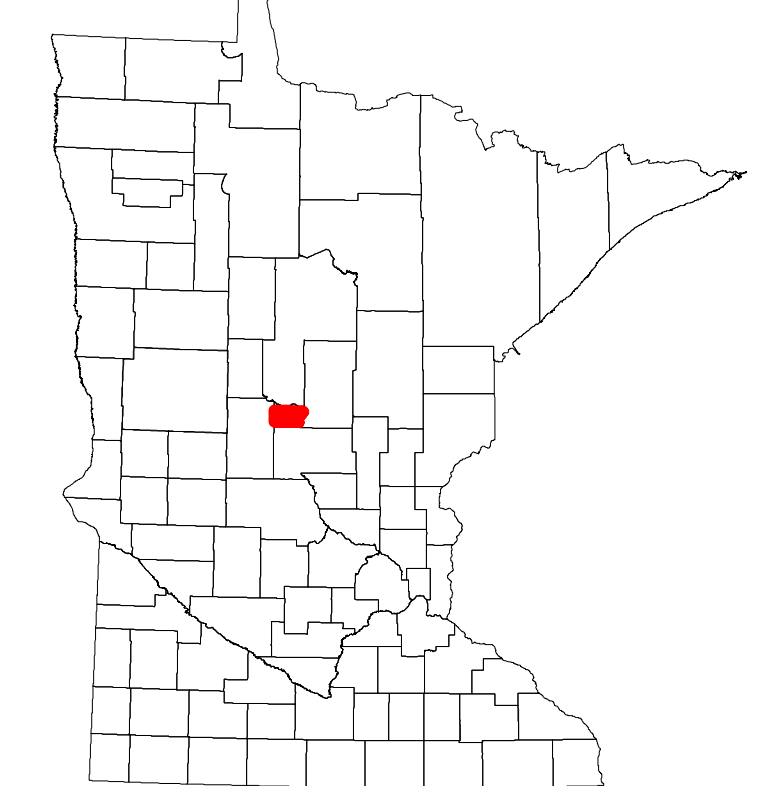
2024



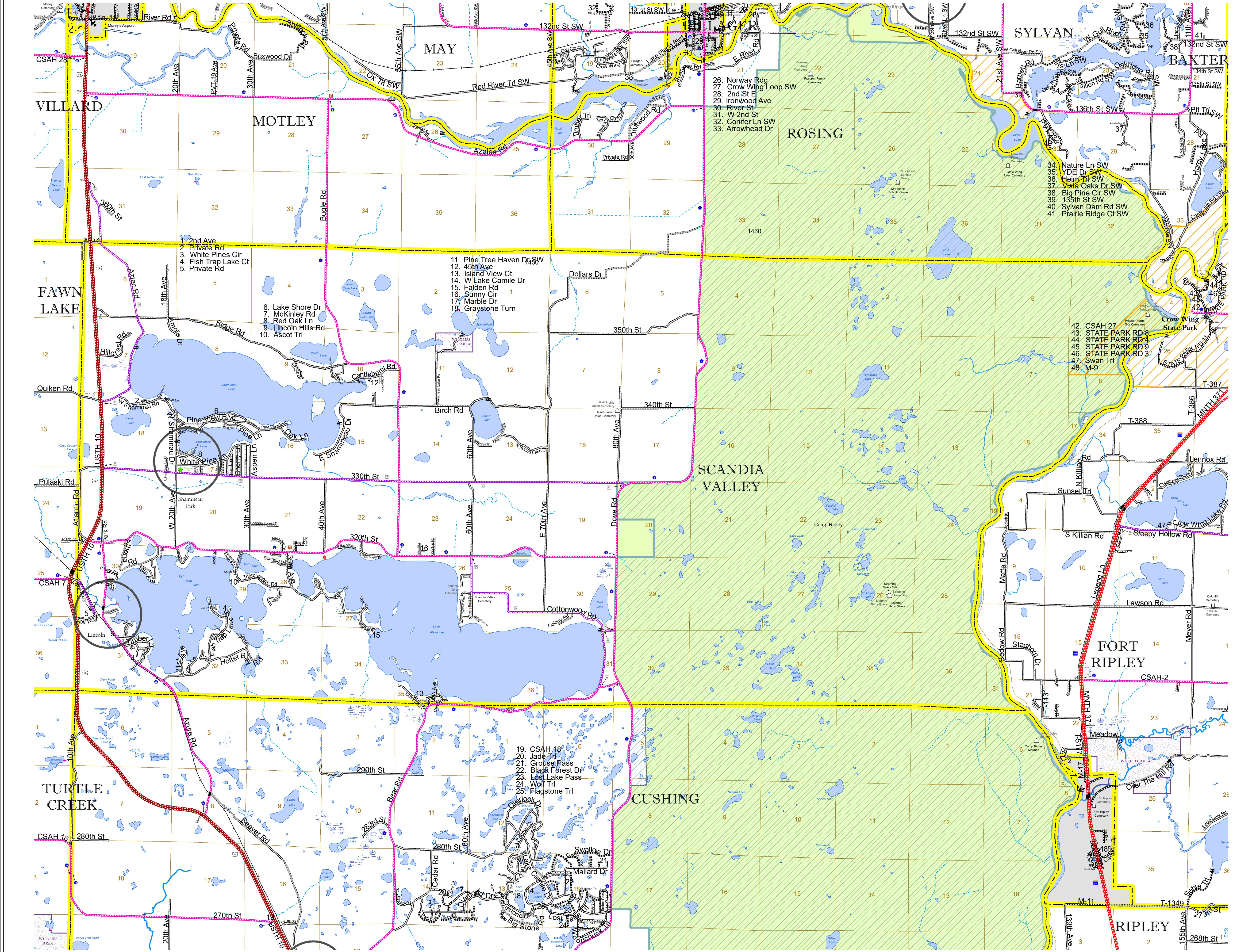
Projection:
Transverse Mercator
NAD 1986
UTM Zone 15

North American Datum
of 1986

ROAD AND ROADWAY FEATURES		AVIATION FEATURES	
INTERSTATE		CONCRETE	
US HIGHWAY		BITUMINOUS	
MN HIGHWAY		GRAVEL	
COUNTY STATE AID HIGHWAY		DIRT/UNIMPROVED	
COUNTY ROAD		OTHER	
TOWNSHIP ROAD		UNKNOWN	
UNORGANIZED TERRITORY ROAD		RAMP OR CONNECTOR	
OTHER ROADS		INTERSTATE EXIT	
Municipal		NATIONAL PARK	
Private		NATIONAL WILDLIFE REFUGES	
State Forest		State Park	
Muskeg		Passive	
RAILROAD AND RAILWAY FEATURES		BOUNDARY FEATURES	
EMPIRE BUILDER STATION (AMTRAK)		TRIBAL LAND	
NORTHSTAR STATION (COMPUTER)		STATE OF MINNESOTA	
AIRSTRIP		COUNTY	
SEAPLANE		MUNICIPALITY	
AIRPORT RUNWAY		UNORGANIZED TERRITORY	
GREEN LINE		FEDERAL ADJUSTED URBAN AREA (FUA)	
INFRASTRUCTURE FEATURES		CIVIL TOWNSHIP	
LONG BRIDGE (200' OR GREATER SPAN)		CONGRESSIONAL TOWNSHIP	
MAJOR BRIDGE (20' TO 200' SPAN)		SECTION	
MINOR BRIDGE (5' TO 20' SPAN)		MILITARY	
DAM		VOYAGEURS NATIONAL PARK	
LOCK AND DAM		BOUNDARY WATERS CANOE AREA WILDERNESS	
CITY CENTERS		STATE PARK	
STATE CAPITAL		REGIONAL PARK	
COUNTY SEAT		NATIONAL FOREST	
CITY CENTER		NATIONAL AND STATE FOREST	
UNINCORPORATED COMMUNITY		STATE FOREST	
PUBLIC SERVICE FEATURES		NATIONAL TRAIL	
MNDOT OFFICE		WILDLIFE REFUGE AREA	
MNDOT TRUCK STATION		WILDLIFE MANAGEMENT AREA	
HIGHWAY PATROL DISTRICT OFFICE		HYDROLOGIC FEATURES	
STATE TRAVEL INFORMATION CENTER		RIVER OR STREAM (PERENNIAL)	
REST AREA (FULL SERVICE)		LAKE, POND OR RESERVOIR	
REST AREA (VAULT TOILETS)		STREAM (INTERMITTENT)	
WAYSIDE (VAULT OR PVI TOILETS)		DRAINAGE DITCH	
PARK AND RIDE LOT		HISTORIC DISTRICT	
PORT OF ENTRY		HISTORIC SITE	
PUBLIC ACCESS POINT		MONUMENT	
MN STATE COLLEGE AND UNIVERSITY SYSTEM (MNSCU)		CULTURAL FEATURES	
UNIVERSITY OF MN SYSTEM		STATE HISTORICAL MARKER	
FAIRGROUNDS		HISTORIC DISTRICT	
		HISTORIC SITE	
		MONUMENT	
		CULTURAL FEATURES	
		STATE HISTORICAL MARKER	



Population (U.S. Census 2010): 1191



To request information from this document in an alternative format, call 651-366-4718 or 1-800-657-3774 (Greater Minnesota); 711 or 1-800-627-3529 (Minnesota Relay). You may also send an e-mail to ADRequest.dot@state.mn.us. (Please request at least one week in advance.)