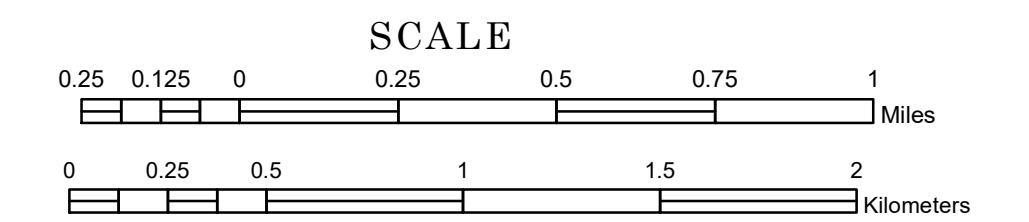


# TOWNSHIP OF CHANARAMBIE

PREPARED BY THE  
MINNESOTA DEPARTMENT OF TRANSPORTATION  
OFFICE OF TRANSPORTATION SYSTEM MANAGEMENT

IN COOPERATION WITH  
U.S. DEPARTMENT OF TRANSPORTATION  
FEDERAL HIGHWAY ADMINISTRATION

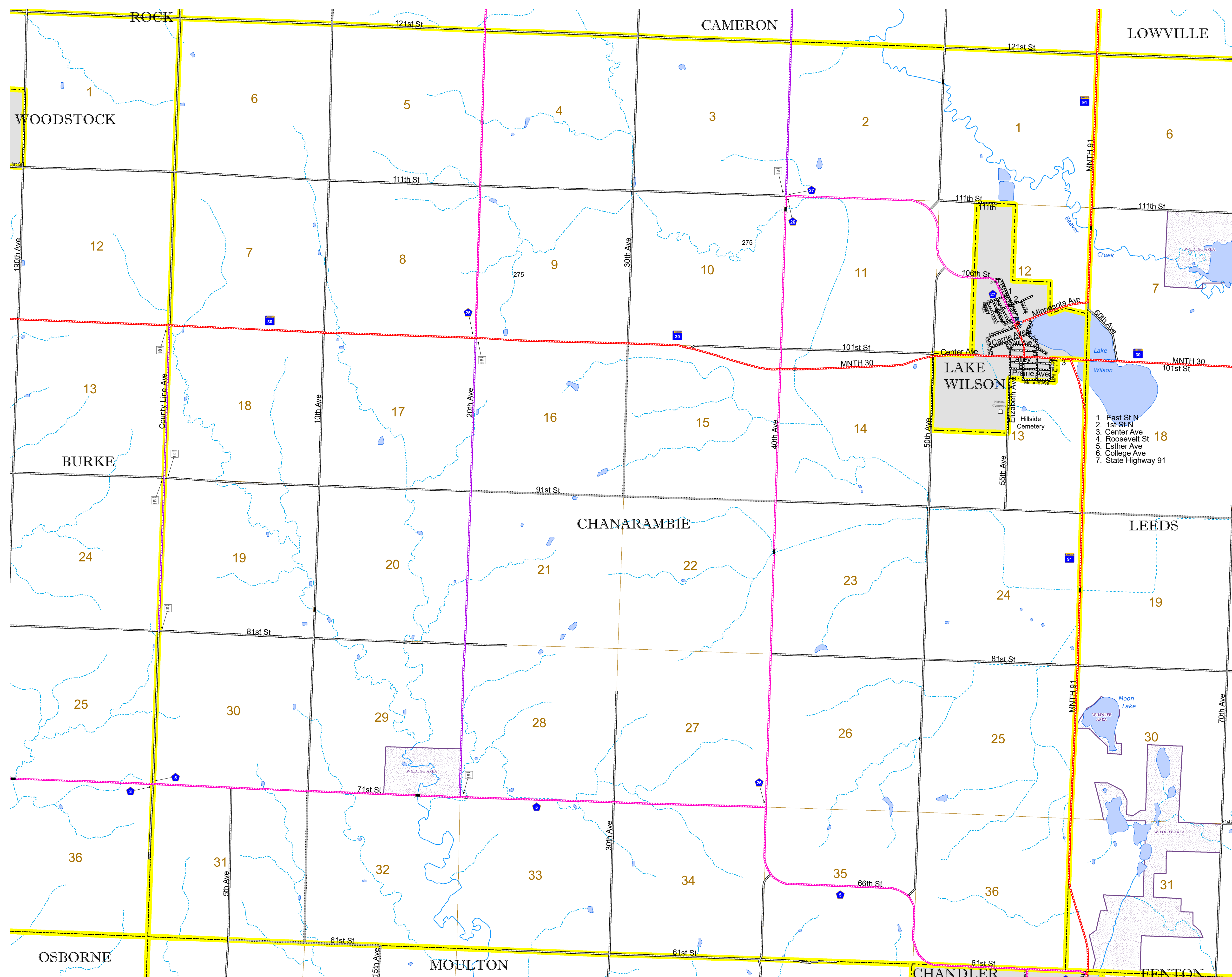


1 in = 1,600 ft  
**2024**

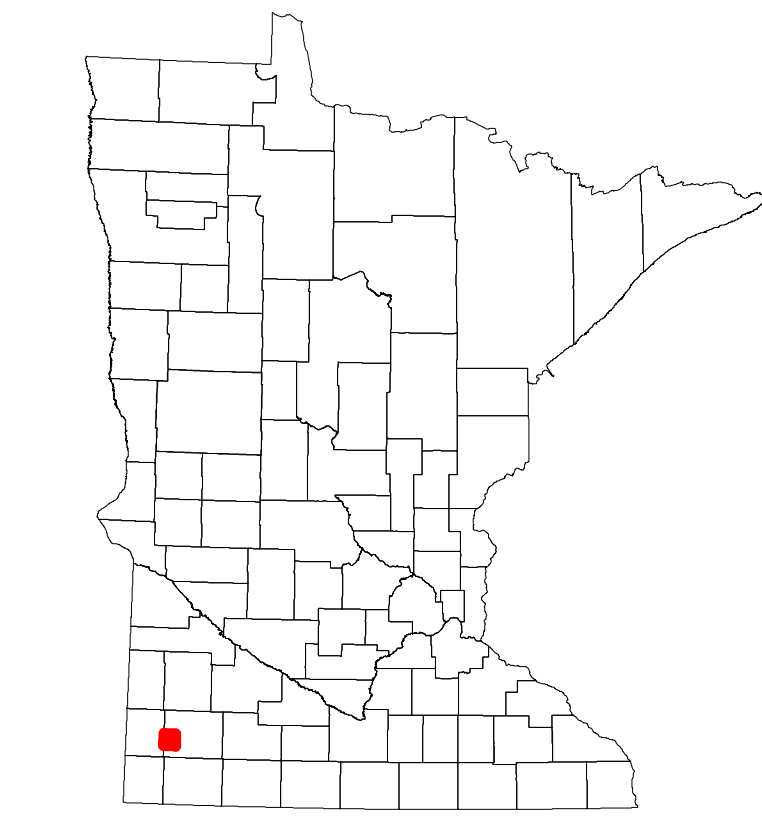
Projection:  
Transverse Mercator  
NAD 1986  
UTM Zone 15



North American Datum  
of 1986



ROAD AND ROADWAY FEATURES		AVIATION FEATURES	
INTERSTATE	CONCRETE	COMMERCIAL AIRPORT	GENERAL AIRPORT
US HIGHWAY	BITUMINOUS	AIRSTRIP	AIRSTRIP
MN HIGHWAY	GRAVEL	SEAPLANE	AIRPORT RUNWAY
COUNTY STATE AID HIGHWAY	DIRT/UNIMPROVED	OTHER	UNKNOWN
COUNTY ROAD	OTHER	UNKNOWN	UNKNOWN
TOWNSHIP ROAD	UNKNOWN	UNKNOWN	UNKNOWN
UNORGANIZED TERRITORY ROAD	UNKNOWN	UNKNOWN	UNKNOWN
OTHER ROADS	RAMP OR CONNECTOR	UNKNOWN	UNKNOWN
Municipal	Private	National Monument	State Forest
Nature Service	National Park	National Wildlife	State Game
Military	National Forest	State Park	Preserve
RAILROAD AND RAILWAY FEATURES		BOUNDARY FEATURES	
EMPIRE BUILDER STATION (AMTRAK)	COMMERCIAL AIRPORT	TRIBAL LAND	STATE OF MINNESOTA
NORTHSTAR STATION (COMMUTER)	GENERAL AIRPORT	COUNTY	MUNICIPALITY
LIGHT RAIL	AIRSTRIP	UNORGANIZED TERRITORY	FEDERAL ADJUSTED URBAN AREA (2014)
BLUE LINE	SEAPLANE	CIVIL TOWNSHIP	CONGRESSIONAL TOWNSHIP
GREEN LINE	AIRPORT RUNWAY	SECTION	MILITARY
INFRASTRUCTURE FEATURES		PUBLIC SERVICE FEATURES	
LONG BRIDGE (200' OR GREATER SPAN)	STATE OF MINNESOTA	MNDOT OFFICE	HIGHWAY TRUCK STATION
MAJOR BRIDGE (20' TO 200' SPAN)	COUNTY	HIGHWAY PATROL DISTRICT OFFICE	STATE TRAVEL INFORMATION CENTER
MINOR BRIDGE (5' TO 20' SPAN)	MUNICIPALITY	REST AREA (FULL SERVICE)	REST AREA (VAULT TOILET)
LOCK AND DAM	UNORGANIZED TERRITORY	WAYSIDE (VAULT OR PITY TOILET)	PARK AND RIDE LOT
CITY CENTERS	FEDERAL ADJUSTED URBAN AREA (2014)	PUBLIC ACCESS POINT	PORT OF ENTRY
STATE CAPITAL	CIVIL TOWNSHIP	MN STATE COLLEGE AND UNIVERSITY SYSTEM (MNSCU)	UNIVERSITY OF MN SYSTEM
COUNTY SEAT	CONGRESSIONAL TOWNSHIP	FAIRGROUNDS	CULTURAL FEATURES
CITY CENTER	MILITARY	STATE HISTORICAL MARKER	HISTORIC DISTRICT
UNINCORPORATED COMMUNITY	VOYAGERS NATIONAL PARK	HISTORIC SITE	MONUMENT
PUBLIC SERVICE FEATURES		HYDROLOGIC FEATURES	
MNDOT OFFICE	BOUNDARY WATERS CANOE AREA WILDERNESS	STATE HISTORICAL MARKER	WETLAND
HIGHWAY TRUCK STATION	STATE PARK	HISTORIC DISTRICT	ISLAND OR LAND
HIGHWAY PATROL DISTRICT OFFICE	REGIONAL PARK	HISTORIC SITE	REGIONAL WATERSHED
STATE TRAVEL INFORMATION CENTER	NATIONAL FOREST	MONUMENT	
REST AREA (FULL SERVICE)	NATIONAL AND STATE FOREST		
REST AREA (VAULT TOILET)	STATE FOREST		
WAYSIDE (VAULT OR PITY TOILET)	NATIONAL TRAIL		
PARK AND RIDE LOT	WILDLIFE REFUGUE AREA		
PORT OF ENTRY	WILDLIFE MANAGEMENT AREA		
PUBLIC ACCESS POINT	HYDROLOGIC FEATURES		
MN STATE COLLEGE AND UNIVERSITY SYSTEM (MNSCU)	RIVER OR STREAM (PERENNIAL)		
UNIVERSITY OF MN SYSTEM	LAKE, POND OR RESERVOIR		
FAIRGROUNDS	STREAM (INTERMITTENT)		
CULTURAL FEATURES	DRAINAGE DITCH		
STATE HISTORICAL MARKER	WETLAND		
HISTORIC DISTRICT	ISLAND OR LAND		
HISTORIC SITE	REGIONAL WATERSHED		
MONUMENT			



Population (U.S. Census 2010): 206

To request information from this document in an alternative format, call 651-366-4718 or 1-800-657-3774 (Greater Minnesota); 711 or 1-800-627-3529 (Minnesota Relay). You may also send an e-mail to ADarequest.dot@state.mn.us. (Please request at least one week in advance.)