

TOWNSHIP OF LOCKHART

PREPARED BY THE
MINNESOTA DEPARTMENT OF TRANSPORTATION
OFFICE OF TRANSPORTATION SYSTEM MANAGEMENT

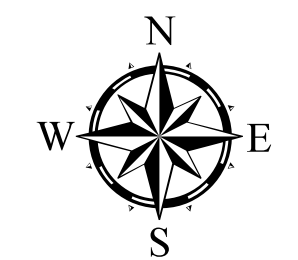
IN COOPERATION WITH
U.S. DEPARTMENT OF TRANSPORTATION
FEDERAL HIGHWAY ADMINISTRATION



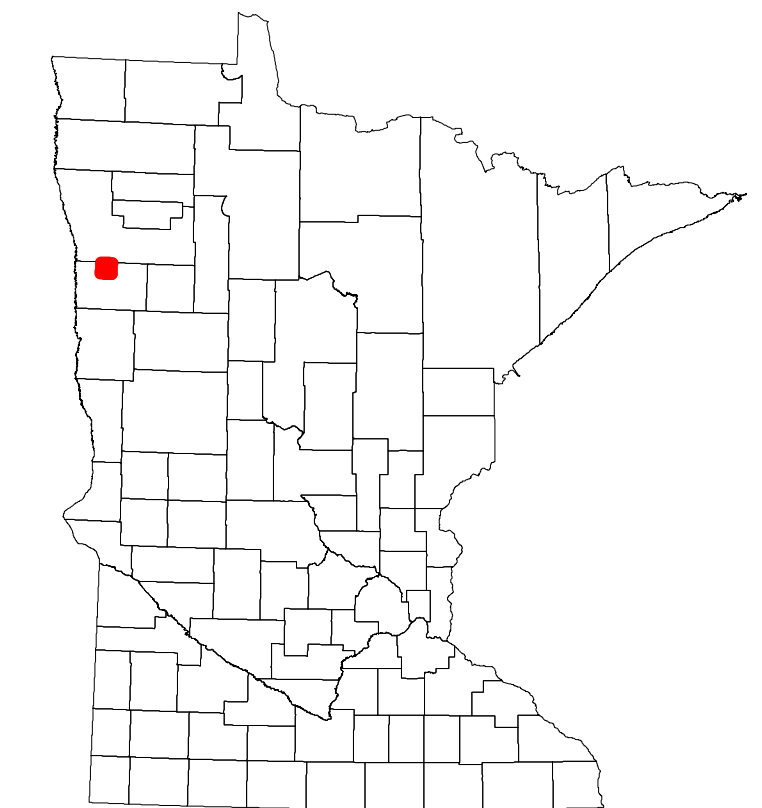
1 in = 1,600 ft

2023

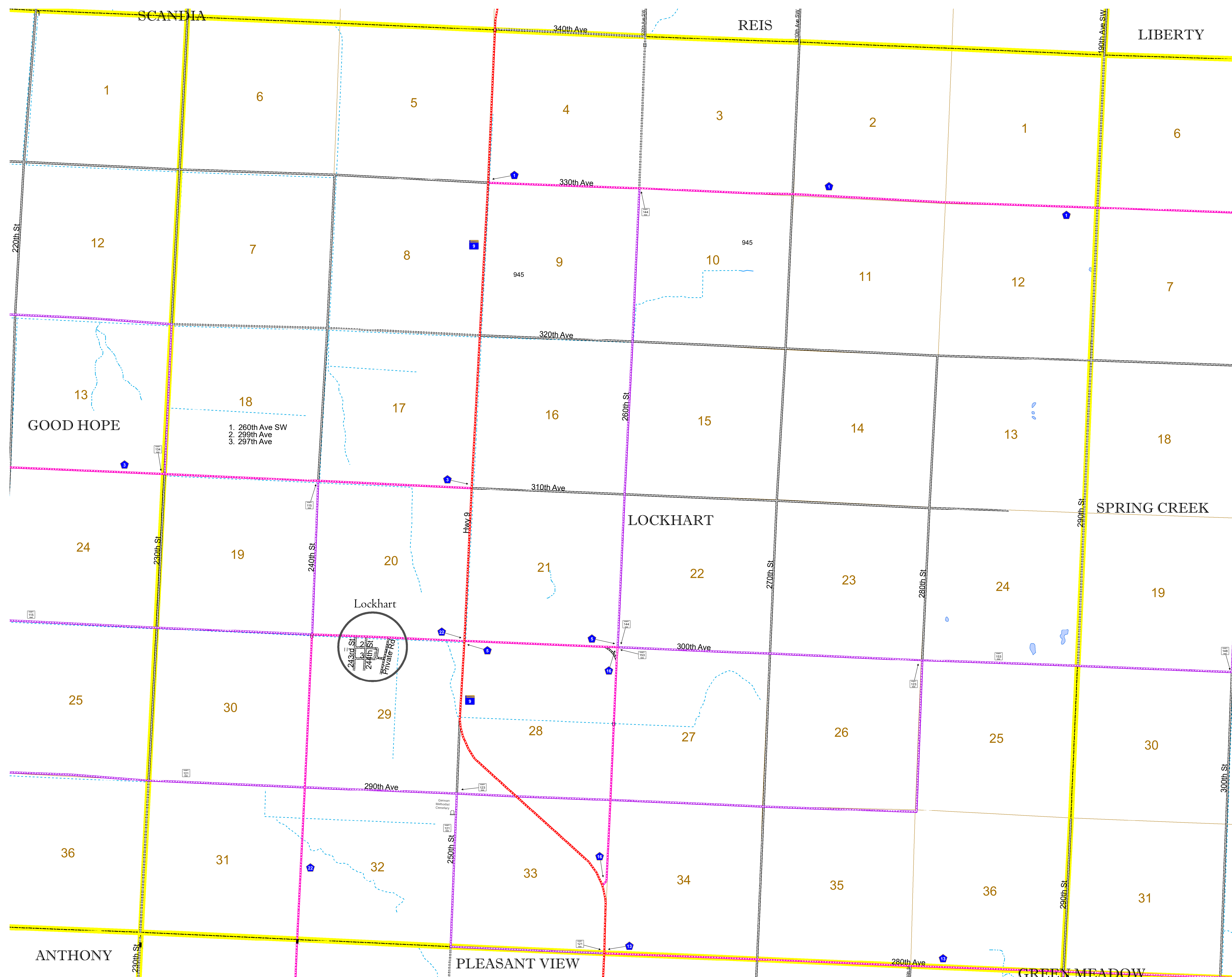
Projection:
Transverse Mercator
NAD 1986
UTM Zone 15



ROAD AND ROADWAY FEATURES		AVIATION FEATURES	
INTERSTATE	CONCRETE	COMMERCIAL AIRPORT	GENERAL AIRPORT
US HIGHWAY	BITUMINOUS	AIRSTRIP	AIRSTRIP
MN HIGHWAY	GRAVEL	SEAPLANE	AIRPORT RUNWAY
COUNTY STATE AID HIGHWAY	DIRT/UNIMPROVED	OTHER	
COUNTY ROAD	OTHER		
TOWNSHIP ROAD	UNKNOWN		
UNORGANIZED TERRITORY ROAD			
OTHER ROADS			
Municipal	Private	National Monument	State Forest
Nature Service	National Park	National Wildlife	State Game
Military	National Forest	State Park	Preserve
RAILROAD AND RAILWAY FEATURES		BOUNDARY FEATURES	
EMPIRE BUILDER STATION (AMTRAK)	TRIBAL LAND	STATE OF MINNESOTA	COUNTY
NORTHSTAR STATION (COMMUTER)	STATE OF MINNESOTA	MUNICIPALITY	MUNICIPALITY
LIGHT RAIL	UNINCORPORATED COMMUNITY	UNINCORPORATED	CIVIL TOWNSHIP
BLUE LINE			CONGRESSIONAL TOWNSHIP
GREEN LINE			SECTION
INFRASTRUCTURE FEATURES			MILITARY
LONG BRIDGE (200' or Greater Span)			VOYAGEURS NATIONAL PARK
MAJOR BRIDGE (20' to 200' Span)			BOUNDARY WATERS CANOE AREA WILDERNESS
MINOR BRIDGE (5' to 20' Span)			STATE PARK
LOCK AND DAM			REGIONAL PARK
			NATIONAL FOREST
			NATIONAL AND STATE FOREST
			STATE FOREST
			NATIONAL TRAIL
			WILDLIFE REFUGE AREA
			WILDLIFE MANAGEMENT AREA
CITY CENTERS		HYDROLOGIC FEATURES	
STATE CAPITAL	CITY CENTER	RIVER OR STREAM (PERENNIAL)	LAKE, POND OR RESERVOIR
COUNTY SEAT	UNINCORPORATED COMMUNITY	STREAM (INTERMITTENT)	DRAINAGE DITCH
			WETLAND
			ISLAND OR LAND
			REGIONAL WATERSHED
PUBLIC SERVICE FEATURES			
MNDOT OFFICE			
MNDOT TRUCK STATION			
HIGHWAY PATROL DISTRICT OFFICE			
STATE TRAVEL INFORMATION CENTER			
REST AREA (Full Service)			
REST AREA (Vault Toilet)			
WAYSIDE (Vault or Pit Toilet)			
PARK AND RIDE LOT			
PORT OF ENTRY			
PUBLIC ACCESS POINT			
MN STATE COLLEGE AND UNIVERSITY SYSTEM (MNSCU)			
UNIVERSITY OF MN SYSTEM			
FAIRGROUNDS			
CULTURAL FEATURES			
STATE HISTORICAL MARKER			
HISTORIC DISTRICT			
HISTORIC SITE			
MONUMENT			



Population (U.S. Census 2010): 50



To request information from this document in an alternative format, call 651-366-4718 or 1-800-657-3774 (Greater Minnesota); 711 or 1-800-627-3529 (Minnesota Relay). You may also send an e-mail to ADARquest.dot@state.mn.us. (Please request at least one week in advance.)