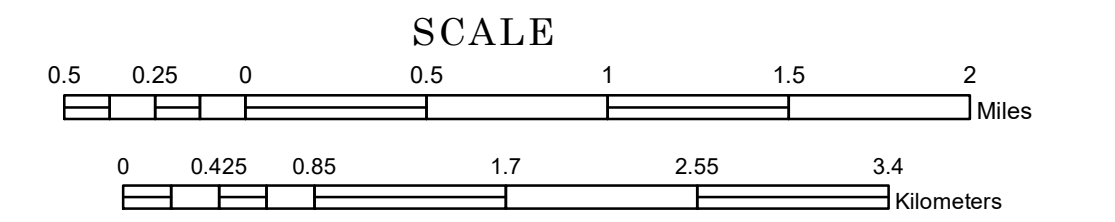


TOWNSHIP OF HIGH FOREST

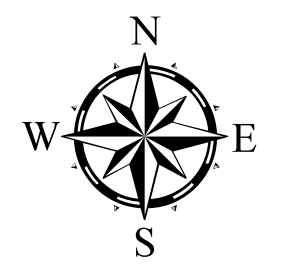
PREPARED BY THE
MINNESOTA DEPARTMENT OF TRANSPORTATION
OFFICE OF TRANSPORTATION SYSTEM MANAGEMENT

IN COOPERATION WITH
U.S. DEPARTMENT OF TRANSPORTATION
FEDERAL HIGHWAY ADMINISTRATION



1 in = 2,800 ft

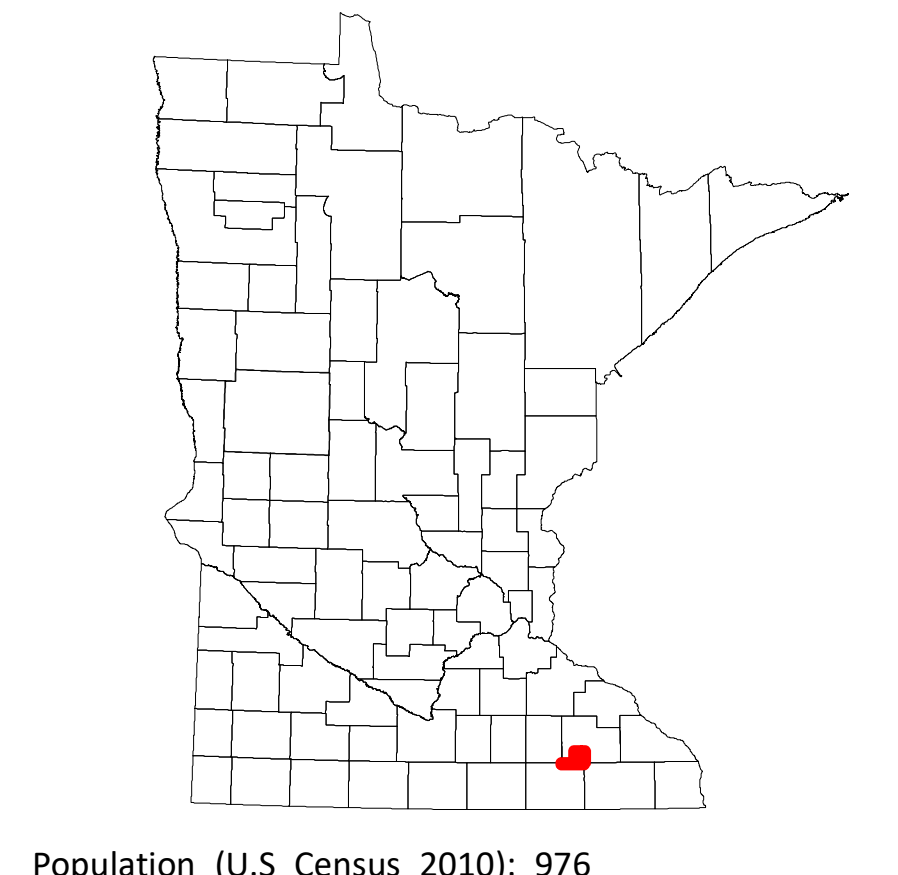
2024



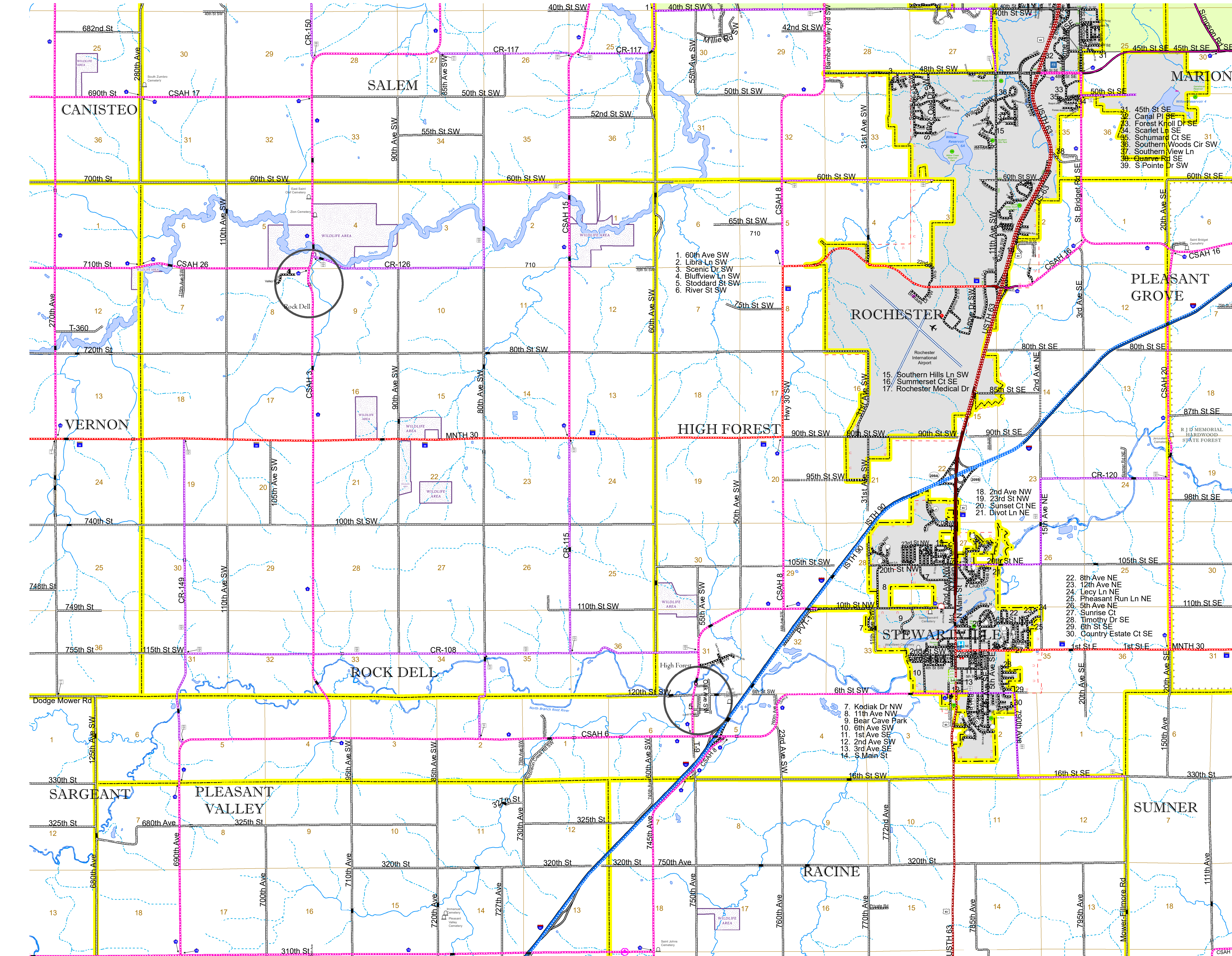
North American Datum
of 1986

Projection:
Transverse Mercator
NAD 1986
UTM Zone 15

ROAD AND ROADWAY FEATURES		BOUNDARY FEATURES	
INTERSTATE		CONCRETE	
US HIGHWAY		BITUMINOUS	
MN HIGHWAY		GRAVEL	
COUNTY STATE AID HIGHWAY		DIRT/UNIMPROVED	
COUNTY ROAD		OTHER	
TOWNSHIP ROAD		UNKNOWN	
UNORGANIZED TERRITORY ROAD		RAMP OR CONNECTOR	
OTHER ROADS		INTERSTATE EXIT	
Municipal		GREAT RIVER ROAD	
Private		RAILROAD AND RAILWAY FEATURES	
National Monument		COMMERCIAL AIRPORT	
State Forest		GENERAL AIRPORT	
Nature Service		AIRSTRIP	
National Park		SEAPLANE	
National Wildlife		AIRPORT RUNWAY	
State Park		TRAIL, LAND	
Museum		STATE OF MINNESOTA	
RAILROAD AND RAILWAY FEATURES		COUNTY	
EMPIRE BUILDER STATION (AMTRAK)		MUNICIPALITY	
NORTHSTAR STATION (COMMUTER)		UNORGANIZED TERRITORY	
LIGHT RAIL		FEDERAL ADJUSTED URBAN AREA (2014)	
BLUE LINE		CIVIL TOWNSHIP	
GREEN LINE		CONGRESSIONAL TOWNSHIP	
INFRASTRUCTURE FEATURES		SECTION	
LONG BRIDGE (200' OR GREATER SPAN)		MILITARY	
MAJOR BRIDGE (20' TO 200' SPAN)		VOYAGEURS NATIONAL PARK	
MINOR BRIDGE (5' TO 20' SPAN)		BOUNDARY WATERS CANOE AREA WILDERNESS	
DAM		STATE PARK	
LOCK AND DAM		REGIONAL PARK	
CITY CENTERS		NATIONAL FOREST	
STATE CAPITAL		NATIONAL AND STATE FOREST	
COUNTY SEAT		STATE FOREST	
CITY CENTER		NATIONAL TRAIL	
UNINCORPORATED COMMUNITY		WILDLIFE REFUGUE AREA	
PUBLIC SERVICE FEATURES		WILDLIFE MANAGEMENT AREA	
MNDOT OFFICE		HYDROLOGIC FEATURES	
MNDOT TRUCK STATION		RIVER OR STREAM (PERMANENT)	
HIGHWAY PATROL DISTRICT OFFICE		LAKE, POND OR RESERVOIR	
STATE TRAVEL INFORMATION CENTER		STREAM (INTERMITTENT)	
REST AREA (Full Service)		DRAINAGE DITCH	
REST AREA (Vault Toilet)		WETLAND	
WAYSIDE (Vault or Pit Toilet)		ISLAND OR LAND	
PARK AND RIDE LOT		REGIONAL WATERSHED	
PORT OF ENTRY			
PUBLIC ACCESS POINT			
MN STATE COLLEGE AND UNIVERSITY SYSTEM (MNSCU)			
UNIVERSITY OF MN SYSTEM			
FAIRGROUNDS			
CULTURAL FEATURES			
STATE HISTORICAL MARKER			
HISTORIC DISTRICT			
HISTORIC SITE			
MONUMENT			



Population (U.S. Census 2010): 976



To request information from this document in an alternative format, call 651-366-4718 or 1-800-657-3774 (Greater Minnesota); 711 or 1-800-627-3529 (Minnesota Relay). You may also send an e-mail to ADRequest.dot@state.mn.us. (Please request at least one week in advance.)