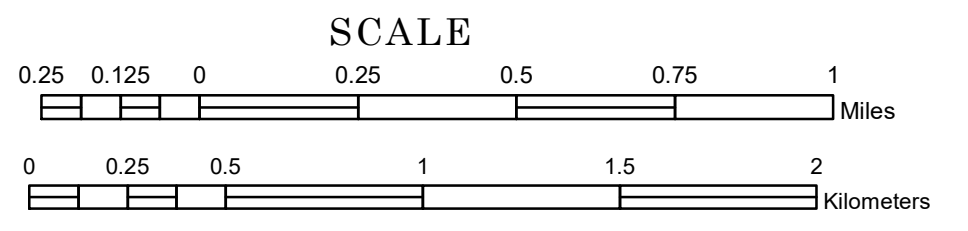


# TOWNSHIP OF AASTAD

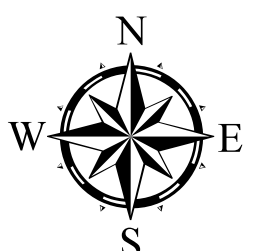
PREPARED BY THE  
MINNESOTA DEPARTMENT OF TRANSPORTATION  
OFFICE OF TRANSPORTATION SYSTEM MANAGEMENT

IN COOPERATION WITH  
U.S. DEPARTMENT OF TRANSPORTATION  
FEDERAL HIGHWAY ADMINISTRATION



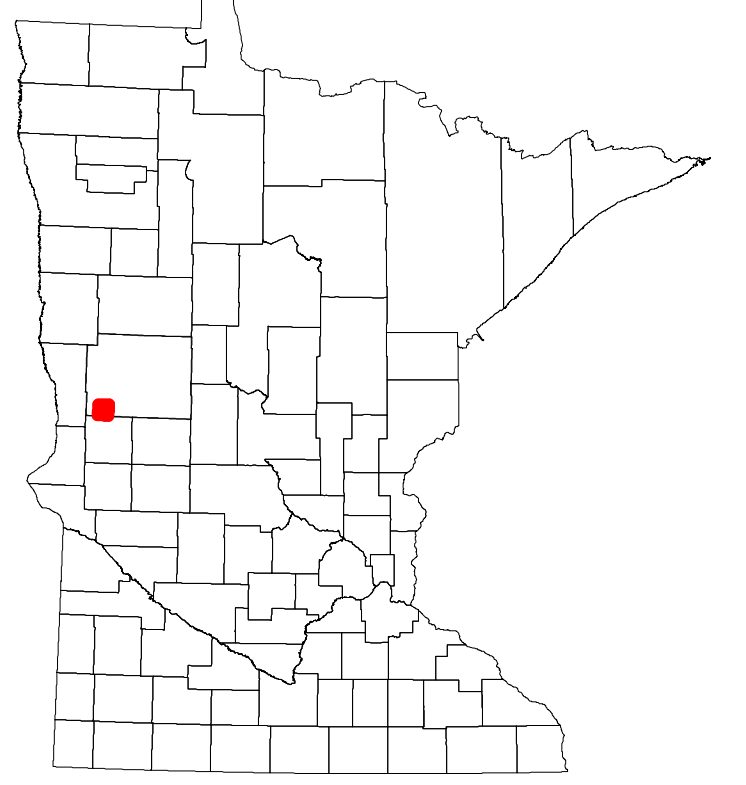
1 in = 1,600 ft  
**2024**

Projection:  
Transverse Mercator  
NAD 1986  
UTM Zone 15

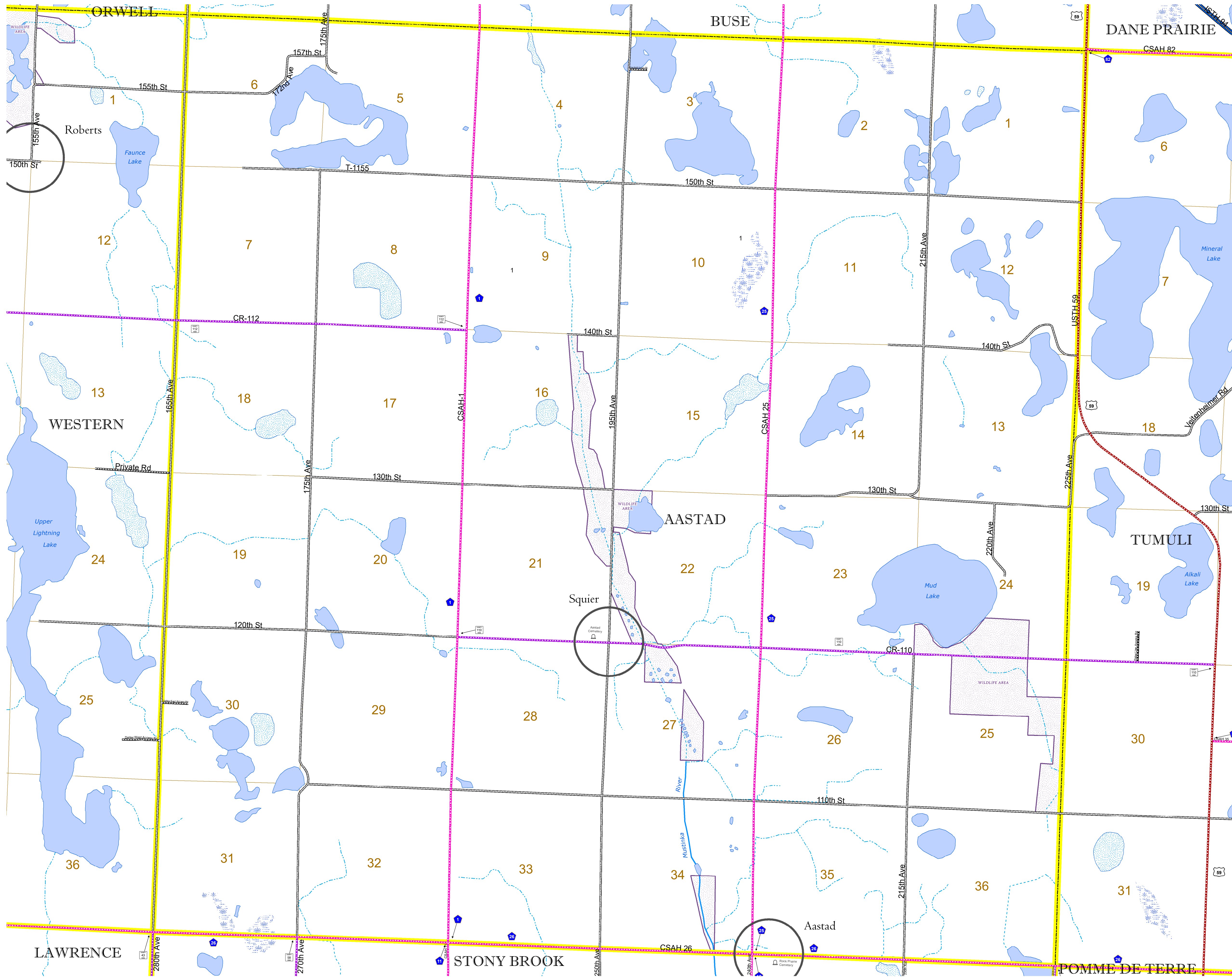


North American Datum  
of 1986

ROAD AND ROADWAY FEATURES		BOUNDARY FEATURES	
INTERSTATE	CONCRETE	TRIBAL LAND	SECTION
US HIGHWAY	BITUMINOUS	STATE OF MINNESOTA	MILITARY
MN HIGHWAY	GRAVEL	COUNTY	VOYAGEURS NATIONAL PARK
COUNTY STATE AID HIGHWAY	DIRT/UNIMPROVED	MUNICIPALITY	BOUNDARY WATERS GANOE AREA WILDERNESS
COUNTY ROAD	OTHER	UNORGANIZED TERRITORY	STATE PARK
TOWNSHIP ROAD	UNKNOWN	FEDERAL ADJUSTED URBAN AREA (2014)	REGIONAL PARK
UNORGANIZED TERRITORY ROAD		CIVIL TOWNSHIP	NATIONAL FOREST
OTHER ROADS		CONGRESSIONAL TOWNSHIP	NATIONAL AND STATE FOREST
Municipal	RAMP OR CONNECTOR	COMMUNITY	STATE FOREST
Private	INTERSTATE EXIT	UNINCORPORATED	NATIONAL TRAIL
National Monument	GREAT RIVER ROAD	COMMUNITY	WILDLIFE REFUGUE AREA
National Wildlife		SECTION	WILDLIFE MANAGEMENT AREA
State Game		MILITARY	HYDROLOGIC FEATURES
National Forest		VOYAGEURS NATIONAL PARK	RIVER OR STREAM (PERMANENT)
State Park		BOUNDARY WATERS GANOE AREA WILDERNESS	LAKE, POND OR RESERVOIR
Present		STATE PARK	STREAM (INTERMITTENT)
		REGIONAL PARK	DRAINAGE DITCH
		NATIONAL FOREST	WETLAND
		NATIONAL AND STATE FOREST	ISLAND OR LAND
		STATE FOREST	REGIONAL WATERSHED
		NATIONAL TRAIL	
		WILDLIFE REFUGUE AREA	
		WILDLIFE MANAGEMENT AREA	
		HYDROLOGIC FEATURES	
		RIVER OR STREAM (PERMANENT)	
		LAKE, POND OR RESERVOIR	
		STREAM (INTERMITTENT)	
		DRAINAGE DITCH	
		WETLAND	
		ISLAND OR LAND	
		REGIONAL WATERSHED	



Population (U.S. Census 2010): 213



To request information from this document in an alternative format, call 651-366-4718 or 1-800-657-3774 (Greater Minnesota); 711 or 1-800-627-3529 (Minnesota Relay). You may also send an e-mail to ADARquest.dot@state.mn.us. (Please request at least one week in advance.)