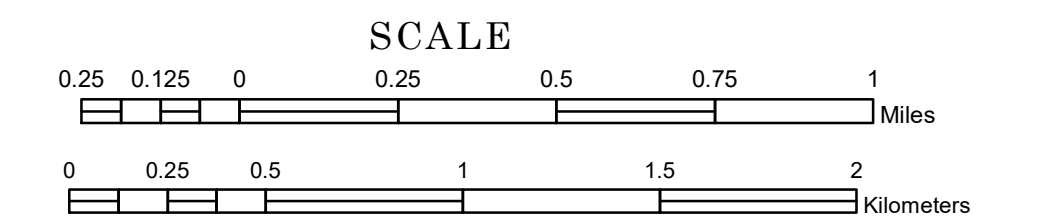


TOWNSHIP OF CANDOR

PREPARED BY THE
MINNESOTA DEPARTMENT OF TRANSPORTATION
OFFICE OF TRANSPORTATION SYSTEM MANAGEMENT

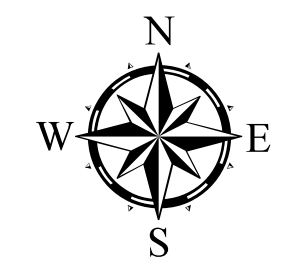
IN COOPERATION WITH
U.S. DEPARTMENT OF TRANSPORTATION
FEDERAL HIGHWAY ADMINISTRATION



1 in = 1,600 ft

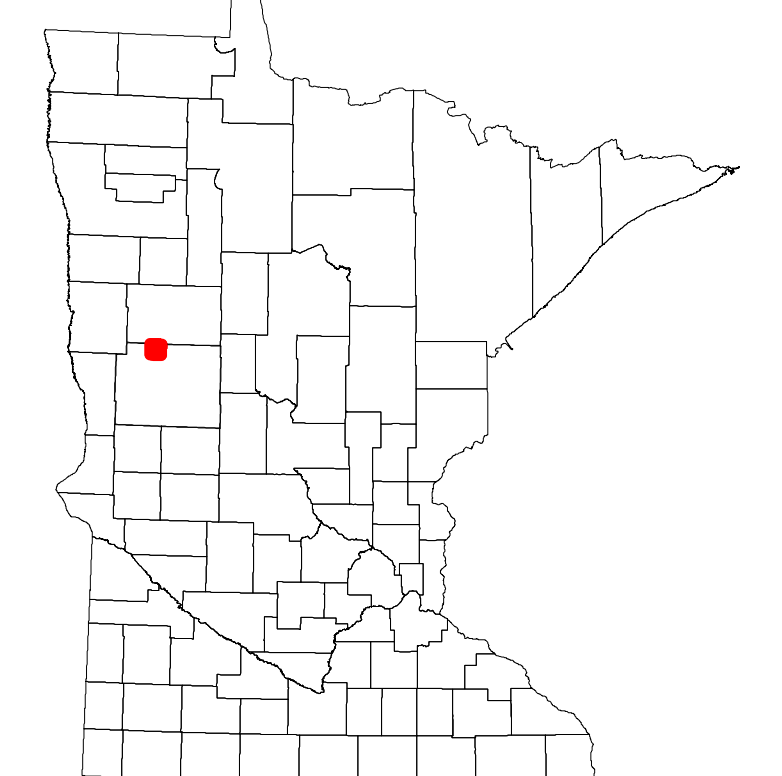
2024

Projection:
Transverse Mercator
NAD 1986
UTM Zone 15

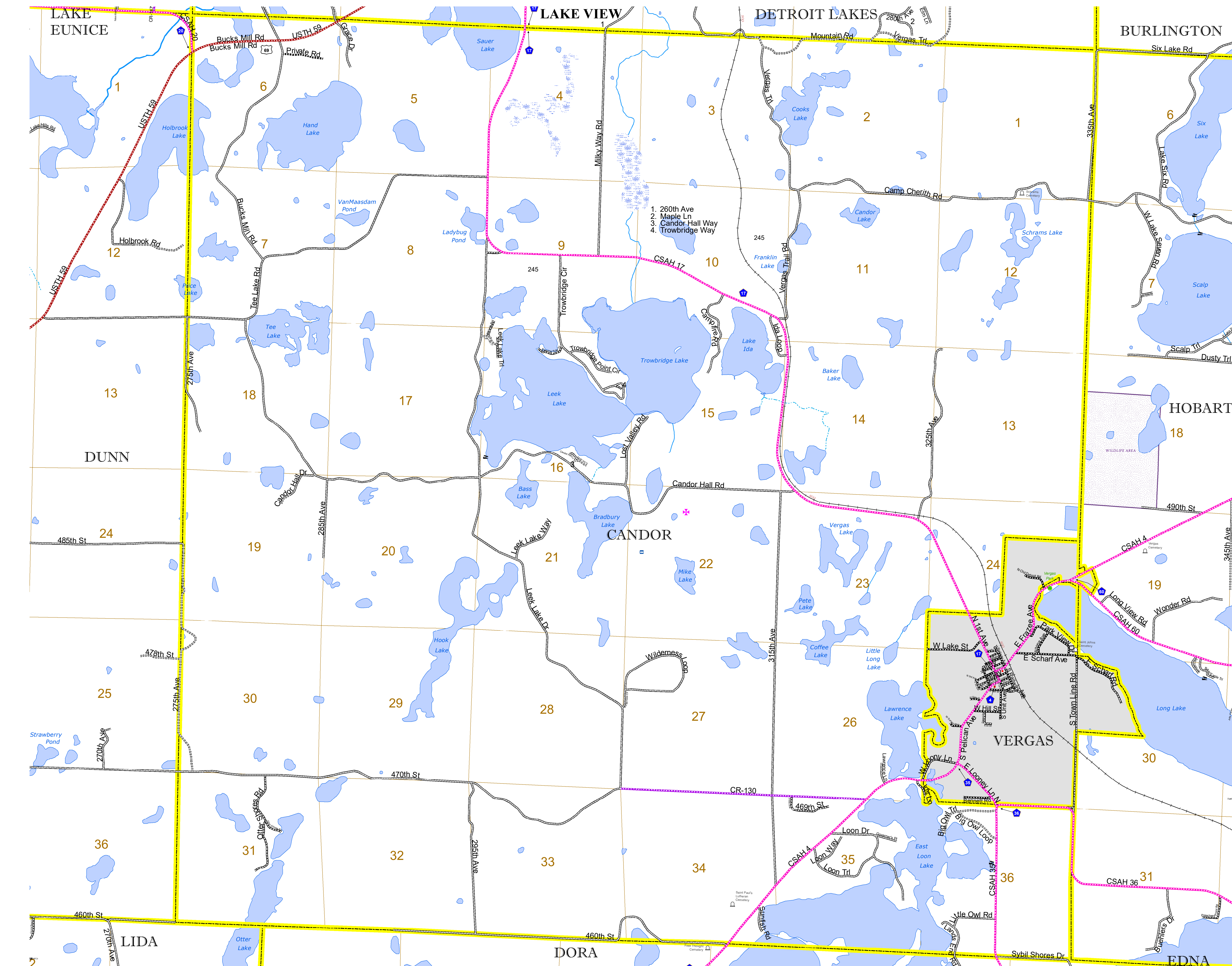


North American Datum
of 1986

ROAD AND ROADWAY FEATURES	
INTERSTATE	CONCRETE
US HIGHWAY	BITUMINOUS
MN HIGHWAY	GRAVEL
COUNTY STATE AID HIGHWAY	DIRT/UNIMPROVED
COUNTY ROAD	OTHER
TOWNSHIP ROAD	UNKNOWN
UNORGANIZED TERRITORY ROAD	UNKNOWN
OTHER ROADS	RAMP OR CONNECTOR
Municipal	INTERSTATE EXIT
Private	GREAT RIVER ROAD
National Monument	AVIATION FEATURES
National Wildlife Refuge	COMMERCIAL AIRPORT
State Game	GENERAL AIRPORT
National Forest	AIRSTRIP
State Park	SEAPLANE
Present	AIRPORT RUNWAY
ABSENT	BOUNDARY FEATURES
RAILROAD AND RAILWAY FEATURES	
EMPIRE BUILDER STATION (AMTRAK)	TRIBAL LAND
NORTHSTAR STATION (COMPUTER)	STATE OF MINNESOTA
LIGHT RAIL	COUNTY
BLUE LINE	MUNICIPALITY
GREEN LINE	UNORGANIZED TERRITORY
INFRASTRUCTURE FEATURES	
LONG BRIDGE (200' OR GREATER SPAN)	FEDERAL ADJUSTED URBAN AREA (2014)
MAJOR BRIDGE (20' TO 200' SPAN)	CIVIL TOWNSHIP
MINOR BRIDGE (5' TO 20' SPAN)	CONGRESSIONAL TOWNSHIP
DAM	UNINCORPORATED COMMUNITY
LOCK AND DAM	CITY CENTERS
STATE CAPITAL	COUNTY SEAT
COUNTY SEAT	CITY CENTER
CITY CENTER	UNINCORPORATED COMMUNITY
PUBLIC SERVICE FEATURES	
MNDOT OFFICE	MILITARY
MNDOT TRUCK STATION	VOYAGEURS NATIONAL PARK
HIGHWAY PATROL DISTRICT OFFICE	BOUNDARY WATERS CANOE AREA WILDERNESS
STATE TRAVEL INFORMATION CENTER	STATE PARK
REST AREA (FULL SERVICE)	NATIONAL PARK
REST AREA (VAULT TOILET)	NATIONAL FOREST
WAYSIDE (VAULT OR PVI TOILET)	NATIONAL AND STATE FOREST
PARK AND RIDE LOT	STATE FOREST
PORT OF ENTRY	NATIONAL TRAIL
PUBLIC ACCESS POINT	WILDLIFE REFUGUE AREA
MN STATE COLLEGE AND UNIVERSITY SYSTEM (MNSCU)	WILDLIFE MANAGEMENT AREA
UNIVERSITY OF MN SYSTEM	HYDROLOGIC FEATURES
FAIRGROUNDS	RIVER OR STREAM (PERMANENT)
CULTURAL FEATURES	
STATE HISTORICAL MARKER	LAKE, POND OR RESERVOIR
HISTORIC DISTRICT	STREAM (INTERMITTENT)
HISTORIC SITE	DRAINAGE DITCH
MONUMENT	WETLAND
	ISLAND OR LAND
	REGIONAL WATERSHED



Population (U.S. Census 2010): 561



To request information from this document in an alternative format, call 651-366-4718 or 1-800-657-3774 (Greater Minnesota); 711 or 1-800-627-3529 (Minnesota Relay). You may also send an e-mail to ADArequest.dot@state.mn.us. (Please request at least one week in advance.)