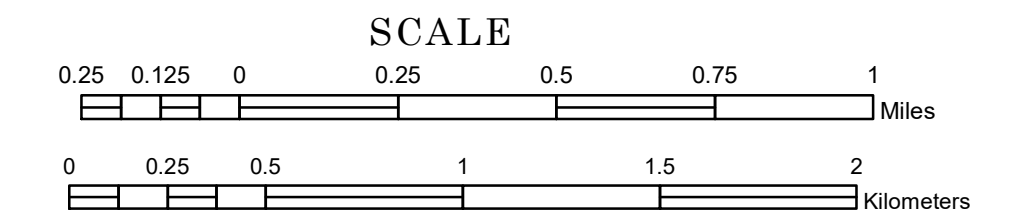


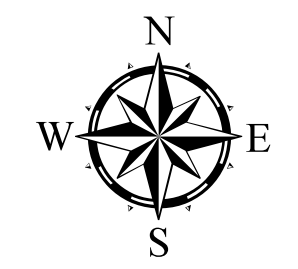
TOWNSHIP OF COMPTON

PREPARED BY THE
MINNESOTA DEPARTMENT OF TRANSPORTATION
OFFICE OF TRANSPORTATION SYSTEM MANAGEMENT

IN COOPERATION WITH
U.S. DEPARTMENT OF TRANSPORTATION
FEDERAL HIGHWAY ADMINISTRATION



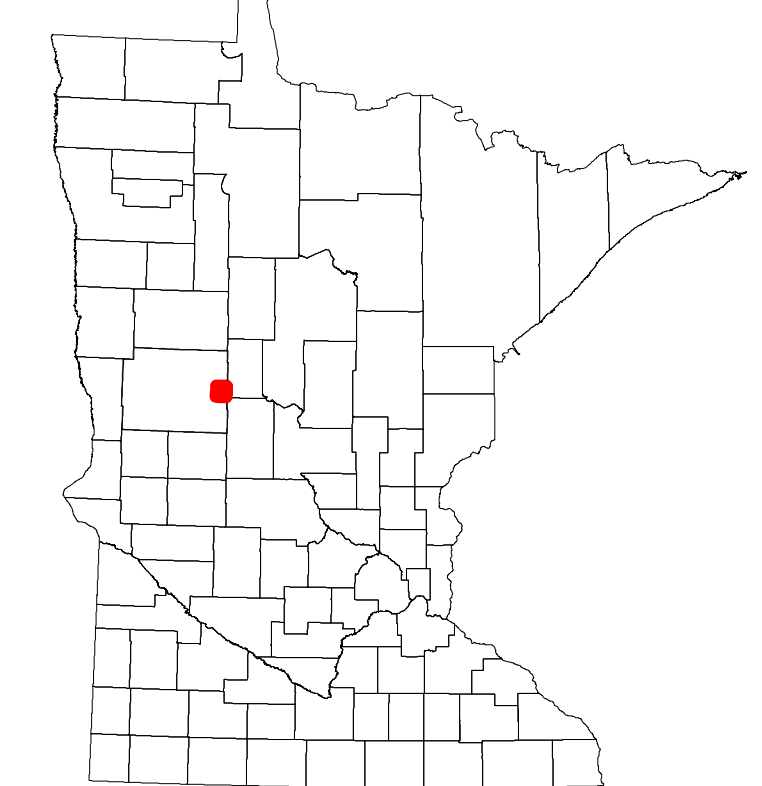
1 in = 1,600 ft
2024



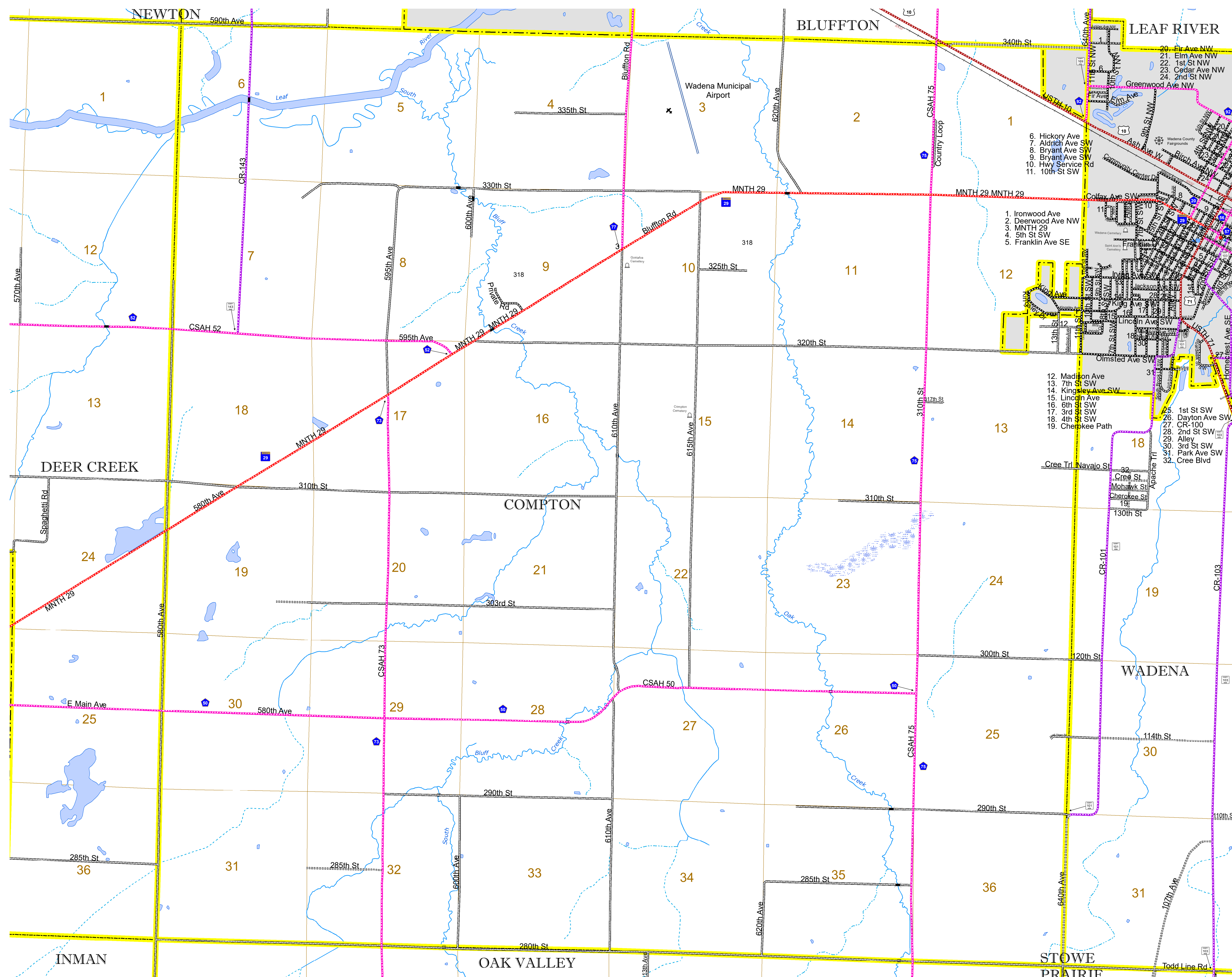
Projection:
Transverse Mercator
NAD 1986
UTM Zone 15

North American Datum
of 1986

ROAD AND ROADWAY FEATURES		BOUNDARY FEATURES	
INTERSTATE		CONCRETE	
US HIGHWAY		BITUMINOUS	
MN HIGHWAY		GRAVEL	
COUNTY STATE AID HIGHWAY		DIRT/UNIMPROVED	
COUNTY ROAD		OTHER	
TOWNSHIP ROAD		UNKNOWN	
UNORGANIZED TERRITORY ROAD		UNKNOWN	
OTHER ROADS		RAMP OR CONNECTOR	
Municipal		INTERSTATE EXIT	
Private		GREAT RIVER ROAD	
National Monument		AVIATION FEATURES	
National Wildlife		COMMERCIAL AIRPORT	
State Game		GENERAL AIRPORT	
State Park		AIRSTRIP	
Present		SEAPLANE	
RAILROAD AND RAILWAY FEATURES		AIRPORT RUNWAY	
EMPIRE BUILDER STATION (AMTRAK)		TRAIL, LAND	
NORTHSTAR STATION (COMPUTER)		STATE OF MINNESOTA	
LIGHT RAIL		COUNTY	
BLUE LINE		MUNICIPALITY	
GREEN LINE		UNORGANIZED TERRITORY	
INFRASTRUCTURE FEATURES		FEDERAL ADJUSTED URBAN AREA (2014)	
LONG BRIDGE (300' OR GREATER SPAN)		CIVIL TOWNSHIP	
MAJOR BRIDGE (20' TO 300' SPAN)		CONGRESSIONAL TOWNSHIP	
MINOR BRIDGE (5' TO 20' SPAN)		SECTION	
DAM		MILITARY	
LOCK AND DAM		VOYAGEURS NATIONAL PARK	
CITY CENTERS		BOUNDARY WATERS GANOE AREA WILDERNESS	
STATE CAPITAL		STATE PARK	
COUNTY SEAT		REGIONAL PARK	
CITY CENTER		NATIONAL FOREST	
UNINCORPORATED COMMUNITY		NATIONAL AND STATE FOREST	
PUBLIC SERVICE FEATURES		STATE FOREST	
MNDOT OFFICE		NATIONAL TRAIL	
MNDOT TRUCK STATION		WILDLIFE REFUGE AREA	
HIGHWAY PATROL DISTRICT OFFICE		WILDLIFE MANAGEMENT AREA	
STATE TRAVEL INFORMATION CENTER		HYDROLOGIC FEATURES	
REST AREA (Full Service)		RIVER OR STREAM (PERMANENT)	
REST AREA (Vault Toilet)		LAKE, POND OR RESERVOIR	
WAYSIDE (Vault or Pit Toilet)		STREAM (INTERMITTENT)	
PARK AND RIDE LOT		DRAINAGE DITCH	
PORT OF ENTRY		WETLAND	
PUBLIC ACCESS POINT		ISLAND OR LAND	
MN STATE COLLEGE AND UNIVERSITY SYSTEM (MNSCU)		REGIONAL WATERSHED	
UNIVERSITY OF MN SYSTEM			
FAIRGROUNDS			
CULTURAL FEATURES			
STATE HISTORICAL MARKER			
HISTORIC DISTRICT			
HISTORIC SITE			
MONUMENT			



Population (U.S. Census 2010): 801



To request information from this document in an alternative format, call 651-366-4718 or 1-800-657-3774 (Greater Minnesota); 711 or 1-800-627-3529 (Minnesota Relay). You may also send an e-mail to ADRequest.dot@state.mn.us. (Please request at least one week in advance.)