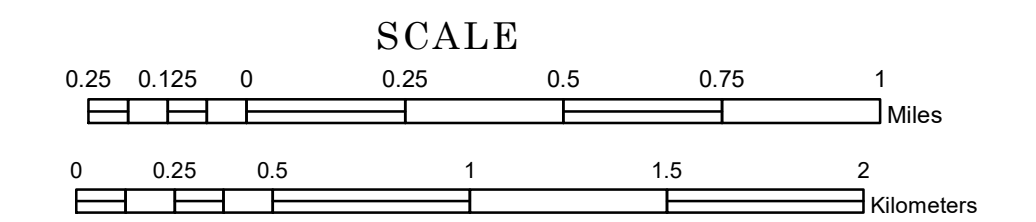


TOWNSHIP OF HOMESTEAD

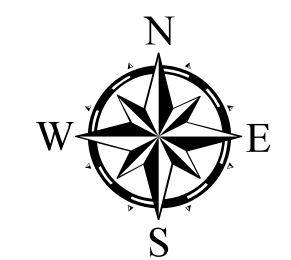
PREPARED BY THE
MINNESOTA DEPARTMENT OF TRANSPORTATION
OFFICE OF TRANSPORTATION SYSTEM MANAGEMENT

IN COOPERATION WITH
U.S. DEPARTMENT OF TRANSPORTATION
FEDERAL HIGHWAY ADMINISTRATION



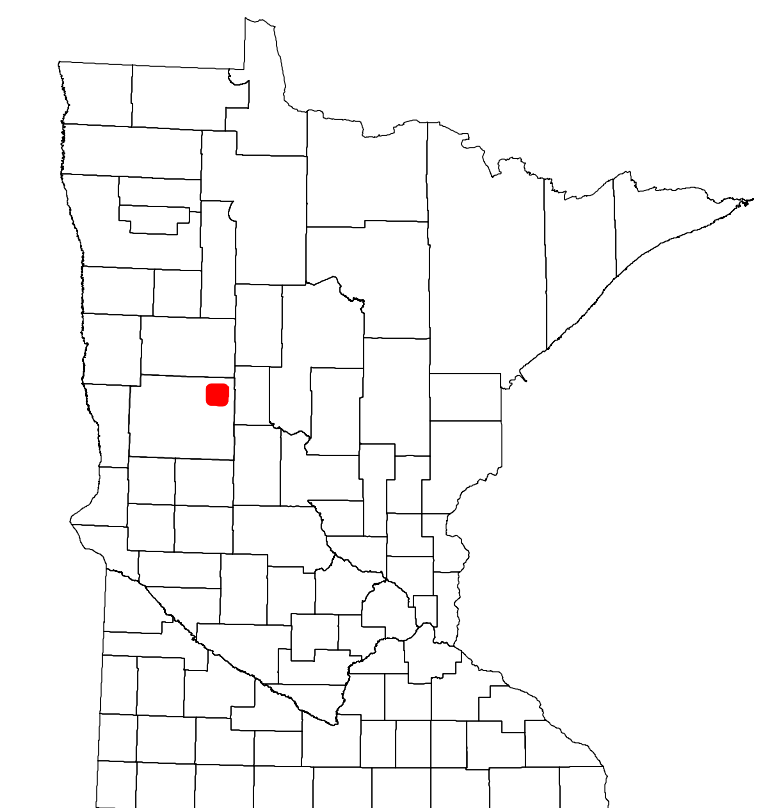
1 in = 1,600 ft
2024

Projection:
Transverse Mercator
NAD 1986
UTM Zone 15

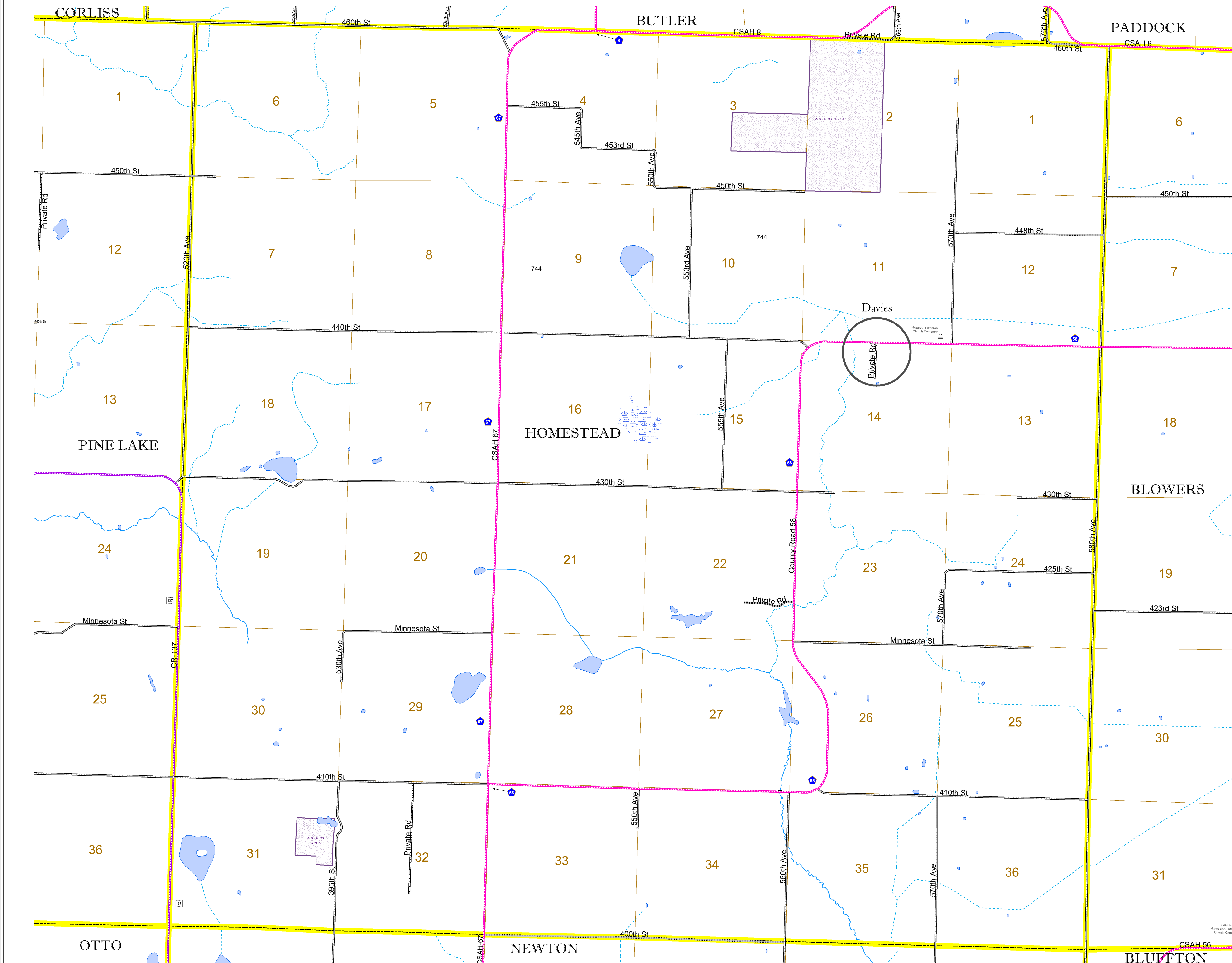


North American Datum
of 1986

ROAD AND ROADWAY FEATURES		AVIATION FEATURES	
INTERSTATE	CONCRETE	COMMERCIAL AIRPORT	GENERAL AIRPORT
US HIGHWAY	BITUMINOUS	AIRSTRIP	AIRSTRIP
MN HIGHWAY	GRAVEL	SEAPLANE	SEAPLANE
COUNTY STATE AID HIGHWAY	DIRT/UNIMPROVED	AIRPORT RUNWAY	AIRPORT RUNWAY
COUNTY ROAD	OTHER		
TOWNSHIP ROAD	UNKNOWN		
UNORGANIZED TERRITORY ROAD			
OTHER ROADS			
Municipal	RAMP OR CONNECTOR		
Private	INTERSTATE EXIT		
National Monument			
State Forest			
Nature Service			
National Park			
National Wildlife			
State Game			
Mulden			
State Park			
Present			
RAILROAD AND RAILWAY FEATURES		BOUNDARY FEATURES	
EMPIRE BUILDER STATION (AMTRAK)	TRIBAL LAND	STATE OF MINNESOTA	COUNTY
NORTHSTAR STATION (COMPUTER)	STATE OF MINNESOTA	MUNICIPALITY	MUNICIPALITY
		UNINCORPORATED	UNINCORPORATED
		CIVIL TOWNSHIP	CIVIL TOWNSHIP
		CONGRESSIONAL TOWNSHIP	CONGRESSIONAL TOWNSHIP
		SECTION	SECTION
		MILITARY	MILITARY
		VOYAGEURS NATIONAL PARK	VOYAGEURS NATIONAL PARK
		BOUNDARY WATERS CANOE AREA WILDERNESS	BOUNDARY WATERS CANOE AREA WILDERNESS
		STATE PARK	STATE PARK
		REGIONAL PARK	REGIONAL PARK
		NATIONAL FOREST	NATIONAL FOREST
		NATIONAL AND STATE FOREST	NATIONAL AND STATE FOREST
		STATE FOREST	STATE FOREST
		NATIONAL TRAIL	NATIONAL TRAIL
		WILDLIFE REFUGUE AREA	WILDLIFE REFUGUE AREA
		WILDLIFE MANAGEMENT AREA	WILDLIFE MANAGEMENT AREA
INFRASTRUCTURE FEATURES		HYDROLOGIC FEATURES	
LONG BRIDGE (200' or Greater Span)	TRIAL LAND	STATE OF MINNESOTA	COUNTY
MAJOR BRIDGE (20' to 200' Span)	STATE OF MINNESOTA	MUNICIPALITY	MUNICIPALITY
MINOR BRIDGE (5' to 20' Span)	UNINCORPORATED	UNINCORPORATED	UNINCORPORATED
DAM	FEDERAL ADJUSTED URBAN AREA (2014)	CIVIL TOWNSHIP	CIVIL TOWNSHIP
LOCK AND DAM		CONGRESSIONAL TOWNSHIP	CONGRESSIONAL TOWNSHIP
		SECTION	SECTION
		MILITARY	MILITARY
		VOYAGEURS NATIONAL PARK	VOYAGEURS NATIONAL PARK
		BOUNDARY WATERS CANOE AREA WILDERNESS	BOUNDARY WATERS CANOE AREA WILDERNESS
		STATE PARK	STATE PARK
		REGIONAL PARK	REGIONAL PARK
		NATIONAL FOREST	NATIONAL FOREST
		NATIONAL AND STATE FOREST	NATIONAL AND STATE FOREST
		STATE FOREST	STATE FOREST
		NATIONAL TRAIL	NATIONAL TRAIL
		WILDLIFE REFUGUE AREA	WILDLIFE REFUGUE AREA
		WILDLIFE MANAGEMENT AREA	WILDLIFE MANAGEMENT AREA
CITY CENTERS		HYDROLOGIC FEATURES	
STATE CAPITAL	TRIAL LAND	STATE OF MINNESOTA	COUNTY
COUNTY SEAT	STATE OF MINNESOTA	MUNICIPALITY	MUNICIPALITY
CITY CENTER	UNINCORPORATED	UNINCORPORATED	UNINCORPORATED
UNINCORPORATED	FEDERAL ADJUSTED URBAN AREA (2014)	CIVIL TOWNSHIP	CIVIL TOWNSHIP
COMMUNITY		CONGRESSIONAL TOWNSHIP	CONGRESSIONAL TOWNSHIP
		SECTION	SECTION
		MILITARY	MILITARY
		VOYAGEURS NATIONAL PARK	VOYAGEURS NATIONAL PARK
		BOUNDARY WATERS CANOE AREA WILDERNESS	BOUNDARY WATERS CANOE AREA WILDERNESS
		STATE PARK	STATE PARK
		REGIONAL PARK	REGIONAL PARK
		NATIONAL FOREST	NATIONAL FOREST
		NATIONAL AND STATE FOREST	NATIONAL AND STATE FOREST
		STATE FOREST	STATE FOREST
		NATIONAL TRAIL	NATIONAL TRAIL
		WILDLIFE REFUGUE AREA	WILDLIFE REFUGUE AREA
		WILDLIFE MANAGEMENT AREA	WILDLIFE MANAGEMENT AREA
PUBLIC SERVICE FEATURES		HYDROLOGIC FEATURES	
MNDOT OFFICE	TRIAL LAND	STATE OF MINNESOTA	COUNTY
MNDOT TRUCK STATION	STATE OF MINNESOTA	MUNICIPALITY	MUNICIPALITY
HIGHWAY PATROL DISTRICT OFFICE	UNINCORPORATED	UNINCORPORATED	UNINCORPORATED
STATE TRAVEL INFORMATION CENTER	FEDERAL ADJUSTED URBAN AREA (2014)	CIVIL TOWNSHIP	CIVIL TOWNSHIP
REST AREA (Full Service)		CONGRESSIONAL TOWNSHIP	CONGRESSIONAL TOWNSHIP
REST AREA (Vault Toilet)		SECTION	SECTION
WAYSIDE (Vault or Pit Toilet)		MILITARY	MILITARY
PARK AND RIDE LOT		VOYAGEURS NATIONAL PARK	VOYAGEURS NATIONAL PARK
PORT OF ENTRY		BOUNDARY WATERS CANOE AREA WILDERNESS	BOUNDARY WATERS CANOE AREA WILDERNESS
PUBLIC ACCESS POINT		STATE PARK	STATE PARK
MN STATE COLLEGE AND UNIVERSITY SYSTEM (MNSCU)		REGIONAL PARK	REGIONAL PARK
UNIVERSITY OF MN SYSTEM		NATIONAL FOREST	NATIONAL FOREST
FARMSHOULDS		NATIONAL AND STATE FOREST	NATIONAL AND STATE FOREST
		STATE FOREST	STATE FOREST
		NATIONAL TRAIL	NATIONAL TRAIL
		WILDLIFE REFUGUE AREA	WILDLIFE REFUGUE AREA
		WILDLIFE MANAGEMENT AREA	WILDLIFE MANAGEMENT AREA
CULTURAL FEATURES		HYDROLOGIC FEATURES	
STATE HISTORICAL MARKER	TRIAL LAND	STATE OF MINNESOTA	COUNTY
HISTORIC DISTRICT	STATE OF MINNESOTA	MUNICIPALITY	MUNICIPALITY
HISTORIC SITE	UNINCORPORATED	UNINCORPORATED	UNINCORPORATED
MONUMENT	FEDERAL ADJUSTED URBAN AREA (2014)	CIVIL TOWNSHIP	CIVIL TOWNSHIP
		CONGRESSIONAL TOWNSHIP	CONGRESSIONAL TOWNSHIP
		SECTION	SECTION
		MILITARY	MILITARY
		VOYAGEURS NATIONAL PARK	VOYAGEURS NATIONAL PARK
		BOUNDARY WATERS CANOE AREA WILDERNESS	BOUNDARY WATERS CANOE AREA WILDERNESS
		STATE PARK	STATE PARK
		REGIONAL PARK	REGIONAL PARK
		NATIONAL FOREST	NATIONAL FOREST
		NATIONAL AND STATE FOREST	NATIONAL AND STATE FOREST
		STATE FOREST	STATE FOREST
		NATIONAL TRAIL	NATIONAL TRAIL
		WILDLIFE REFUGUE AREA	WILDLIFE REFUGUE AREA
		WILDLIFE MANAGEMENT AREA	WILDLIFE MANAGEMENT AREA



Population (U.S. Census 2010): 362



To request information from this document in an alternative format, call 651-366-4718 or 1-800-657-3774 (Greater Minnesota); 711 or 1-800-627-3529 (Minnesota Relay). You may also send an e-mail to ADRequest.dot@state.mn.us. (Please request at least one week in advance.)