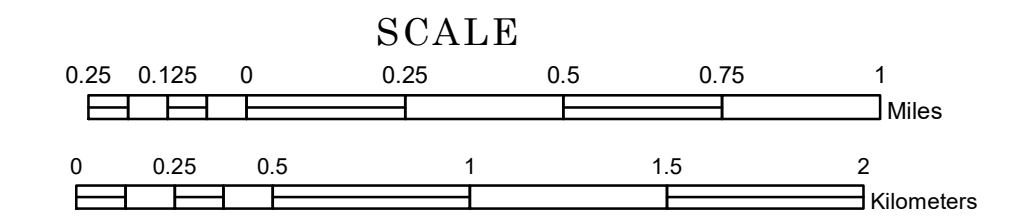


TOWNSHIP OF NORWEGIAN GROVE

PREPARED BY THE
MINNESOTA DEPARTMENT OF TRANSPORTATION
OFFICE OF TRANSPORTATION SYSTEM MANAGEMENT

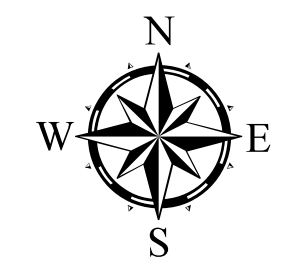
IN COOPERATION WITH
U.S. DEPARTMENT OF TRANSPORTATION
FEDERAL HIGHWAY ADMINISTRATION



1 in = 1,600 ft

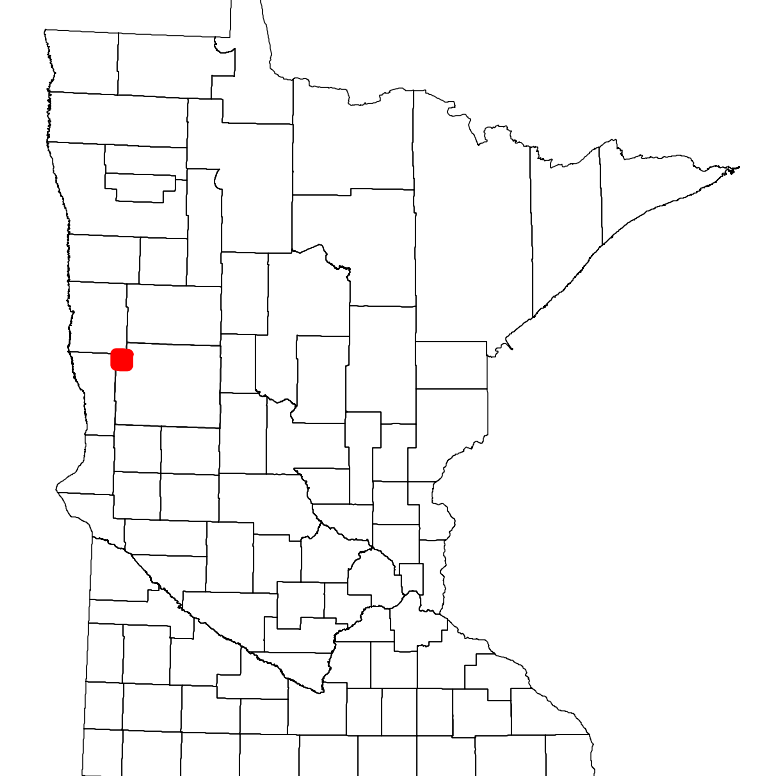
2024

Projection:
Transverse Mercator
NAD 1986
UTM Zone 15

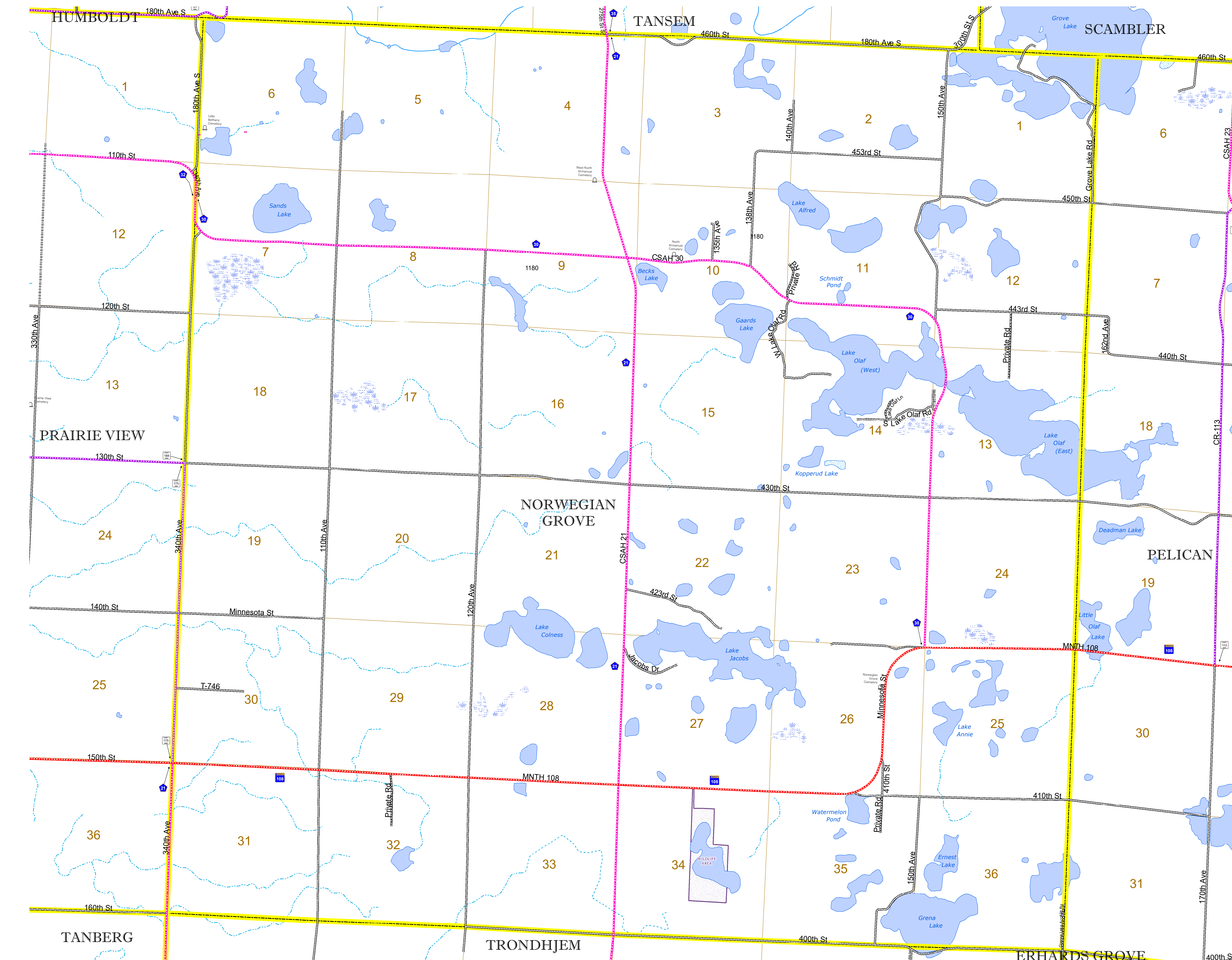


North American Datum
of 1986

ROAD AND ROADWAY FEATURES		BOUNDARY FEATURES	
INTERSTATE	CONCRETE	TRIAL LAND	TRIBAL LAND
US HIGHWAY	BITUMINOUS	STATE OF MINNESOTA	COUNTY
MN HIGHWAY	GRAVEL	MUNICIPALITY	MUNICIPALITY
COUNTY STATE AID HIGHWAY	DIRT/UNIMPROVED	UNORGANIZED TERRITORY	FEDERAL ADJUSTED URBAN AREA (2014)
COUNTY ROAD	OTHER	CIVIL TOWNSHIP	CIVIL TOWNSHIP
TOWNSHIP ROAD	UNKNOWN	CONGRESSIONAL TOWNSHIP	SECTION
UNORGANIZED TERRITORY ROAD		MILITARY	MILITARY
OTHER ROADS	RAMP OR CONNECTOR	VOYAGEURS NATIONAL PARK	VOYAGEURS NATIONAL PARK
Municipal	INTERSTATE EXIT	BOUNDARY WATERS CANOE AREA WILDERNESS	STATE PARK
Private	AVIATION FEATURES	NATIONAL FOREST	NATIONAL FOREST
National Monument	COMMERCIAL AIRPORT	NATIONAL AND STATE FOREST	NATIONAL AND STATE FOREST
National Wildlife Refuge	GENERAL AIRPORT	STATE FOREST	STATE FOREST
State Game	AIRSTRIP	WILDLIFE REFUGUE AREA	WILDLIFE REFUGUE AREA
State Park	SEAPLANE	WILDLIFE MANAGEMENT AREA	WILDLIFE MANAGEMENT AREA
Present	AIRPORT RUNWAY	HYDROLOGIC FEATURES	HYDROLOGIC FEATURES
		RIVER OR STREAM (PERMANENT)	RIVER OR STREAM (PERMANENT)
		LAKE, POND OR RESERVOIR	LAKE, POND OR RESERVOIR
		STREAM (INTERMITTENT)	STREAM (INTERMITTENT)
		DRAINAGE DITCH	DRAINAGE DITCH
		WETLAND	WETLAND
		ISLAND OR LAND	ISLAND OR LAND
		REGIONAL WATERSHED	REGIONAL WATERSHED



Population (U.S. Census 2010): 300



To request information from this document in an alternative format, call 651-366-4718 or 1-800-657-3774 (Greater Minnesota); 711 or 1-800-627-3529 (Minnesota Relay). You may also send an e-mail to ADArequest.dot@state.mn.us. (Please request at least one week in advance.)