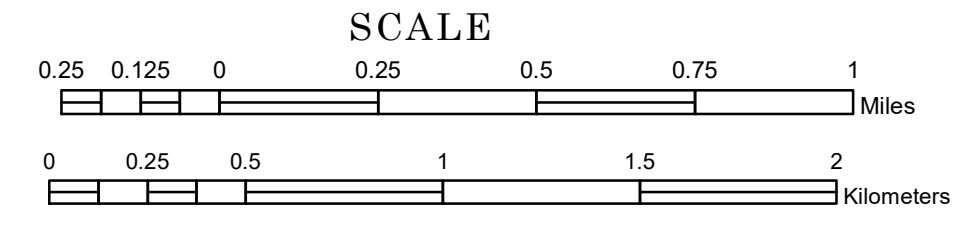


# TOWNSHIP OF OSCAR

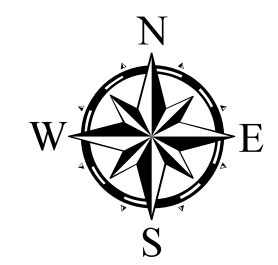
PREPARED BY THE  
MINNESOTA DEPARTMENT OF TRANSPORTATION  
OFFICE OF TRANSPORTATION SYSTEM MANAGEMENT

IN COOPERATION WITH  
U.S. DEPARTMENT OF TRANSPORTATION  
FEDERAL HIGHWAY ADMINISTRATION

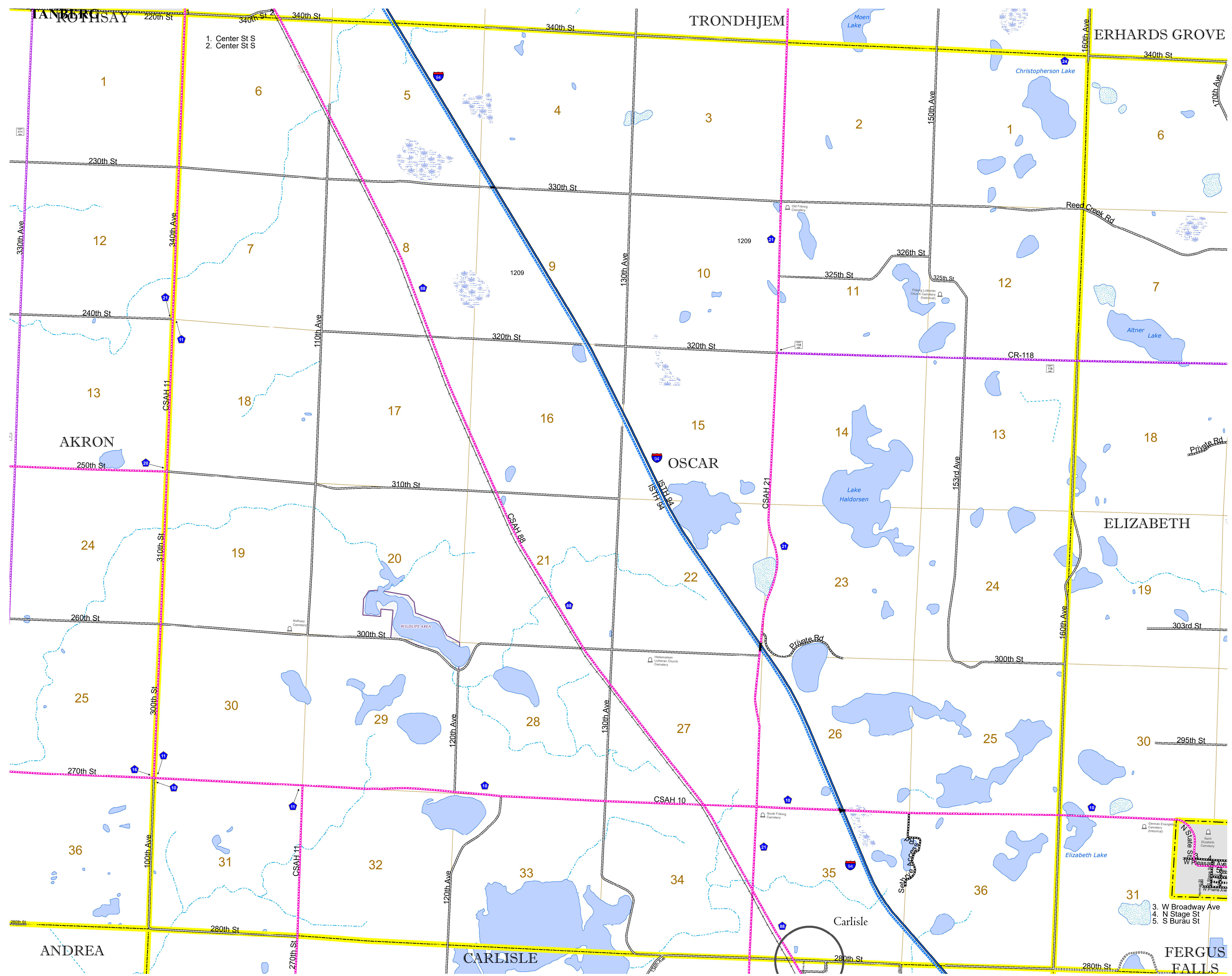


2024

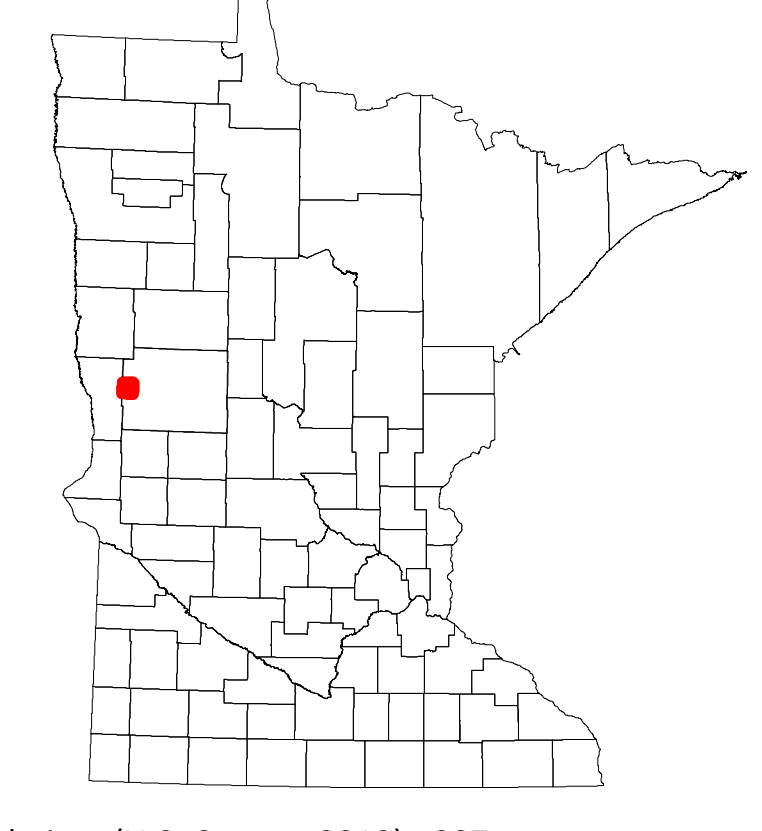
Projection:  
Transverse Mercator  
NAD 1986  
UTM Zone 15



North American Datum  
of 1986



ROAD AND ROADWAY FEATURES		AVIATION FEATURES	
INTERSTATE	CONCRETE	COMMERCIAL AIRPORT	GENERAL AIRPORT
US HIGHWAY	BITUMINOUS	AIRSTRIP	SEAPLANE
MN HIGHWAY	GRAVEL	AIRPORT RUNWAY	AIRPORT RUNWAY
COUNTY STATE AID HIGHWAY	DIRT/UNIMPROVED	OTHER	UNKNOWN
COUNTY ROAD	OTHER	UNKNOWN	UNKNOWN
TOWNSHIP ROAD	UNKNOWN	UNKNOWN	UNKNOWN
UNORGANIZED TERRITORY ROAD	UNKNOWN	UNKNOWN	UNKNOWN
OTHER ROADS	RAMP OR CONNECTOR	UNKNOWN	UNKNOWN
Municipal	INTERSTATE EXIT	UNKNOWN	UNKNOWN
Private	UNKNOWN	UNKNOWN	UNKNOWN
National Monument	UNKNOWN	UNKNOWN	UNKNOWN
National Park	UNKNOWN	UNKNOWN	UNKNOWN
National Wildlife	UNKNOWN	UNKNOWN	UNKNOWN
State Game	UNKNOWN	UNKNOWN	UNKNOWN
Museum	UNKNOWN	UNKNOWN	UNKNOWN
State Park	UNKNOWN	UNKNOWN	UNKNOWN
Present	UNKNOWN	UNKNOWN	UNKNOWN
RAILROAD AND RAILWAY FEATURES		BOUNDARY FEATURES	
EMPIRE BUILDER STATION (AMTRAK)	TRIBAL LAND	STATE OF MINNESOTA	COUNTY
NORTHSTAR STATION (COMMUTER)	STATE OF MINNESOTA	COUNTY	MUNICIPALITY
LIGHT RAIL	UNINCORPORATED COMMUNITY	UNINCORPORATED COMMUNITY	CIVIL TOWNSHIP
BLUE LINE	UNINCORPORATED COMMUNITY	UNINCORPORATED COMMUNITY	CIVIL TOWNSHIP
GREEN LINE	UNINCORPORATED COMMUNITY	UNINCORPORATED COMMUNITY	CIVIL TOWNSHIP
INFRASTRUCTURE FEATURES		BOUNDARY FEATURES	
LONG BRIDGE (200' OR GREATER SPAN)	STATE OF MINNESOTA	COUNTY	MUNICIPALITY
MAJOR BRIDGE (20' TO 200' SPAN)	STATE OF MINNESOTA	COUNTY	MUNICIPALITY
MINOR BRIDGE (5' TO 20' SPAN)	STATE OF MINNESOTA	COUNTY	MUNICIPALITY
DAM	STATE OF MINNESOTA	COUNTY	MUNICIPALITY
LOCK AND DAM	STATE OF MINNESOTA	COUNTY	MUNICIPALITY
CITY CENTERS		BOUNDARY FEATURES	
STATE CAPITAL	STATE OF MINNESOTA	COUNTY	MUNICIPALITY
COUNTY SEAT	STATE OF MINNESOTA	COUNTY	MUNICIPALITY
CITY CENTER	STATE OF MINNESOTA	COUNTY	MUNICIPALITY
UNINCORPORATED COMMUNITY	STATE OF MINNESOTA	COUNTY	MUNICIPALITY
PUBLIC SERVICE FEATURES		BOUNDARY FEATURES	
MNDOT OFFICE	STATE OF MINNESOTA	COUNTY	MUNICIPALITY
MNDOT TRUCK STATION	STATE OF MINNESOTA	COUNTY	MUNICIPALITY
HIGHWAY PATROL DISTRICT OFFICE	STATE OF MINNESOTA	COUNTY	MUNICIPALITY
STATE TRAVEL INFORMATION CENTER	STATE OF MINNESOTA	COUNTY	MUNICIPALITY
REST AREA (FULL SERVICE)	STATE OF MINNESOTA	COUNTY	MUNICIPALITY
REST AREA (VAULT TOILET)	STATE OF MINNESOTA	COUNTY	MUNICIPALITY
WAYSIDE (VAULT OR PIT TOILET)	STATE OF MINNESOTA	COUNTY	MUNICIPALITY
PARK AND RIDE LOT	STATE OF MINNESOTA	COUNTY	MUNICIPALITY
PORT OF ENTRY	STATE OF MINNESOTA	COUNTY	MUNICIPALITY
PUBLIC ACCESS POINT	STATE OF MINNESOTA	COUNTY	MUNICIPALITY
MN STATE COLLEGE AND UNIVERSITY SYSTEM (MNSCU)	STATE OF MINNESOTA	COUNTY	MUNICIPALITY
UNIVERSITY OF MN SYSTEM	STATE OF MINNESOTA	COUNTY	MUNICIPALITY
FARMS	STATE OF MINNESOTA	COUNTY	MUNICIPALITY
CULTURAL FEATURES		BOUNDARY FEATURES	
STATE HISTORICAL MARKER	STATE OF MINNESOTA	COUNTY	MUNICIPALITY
HISTORIC DISTRICT	STATE OF MINNESOTA	COUNTY	MUNICIPALITY
HISTORIC SITE	STATE OF MINNESOTA	COUNTY	MUNICIPALITY
MONUMENT	STATE OF MINNESOTA	COUNTY	MUNICIPALITY



- 3. W Broadway Ave
- 4. N Stage St
- 5. S Burau St

Population (U.S. Census 2010): 207

To request information from this document in an alternative format, call 651-366-4718 or 1-800-657-3774 (Greater Minnesota); 711 or 1-800-627-3529 (Minnesota Relay). You may also send an e-mail to ADArequest.dot@state.mn.us. (Please request at least one week in advance.)