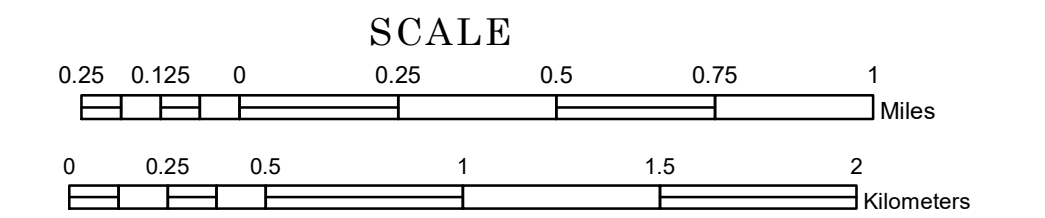


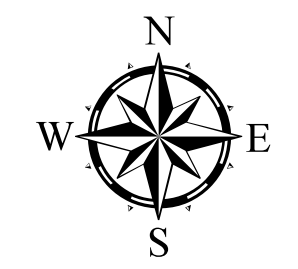
TOWNSHIP OF SAINT OLAF

PREPARED BY THE
MINNESOTA DEPARTMENT OF TRANSPORTATION
OFFICE OF TRANSPORTATION SYSTEM MANAGEMENT

IN COOPERATION WITH
U.S. DEPARTMENT OF TRANSPORTATION
FEDERAL HIGHWAY ADMINISTRATION



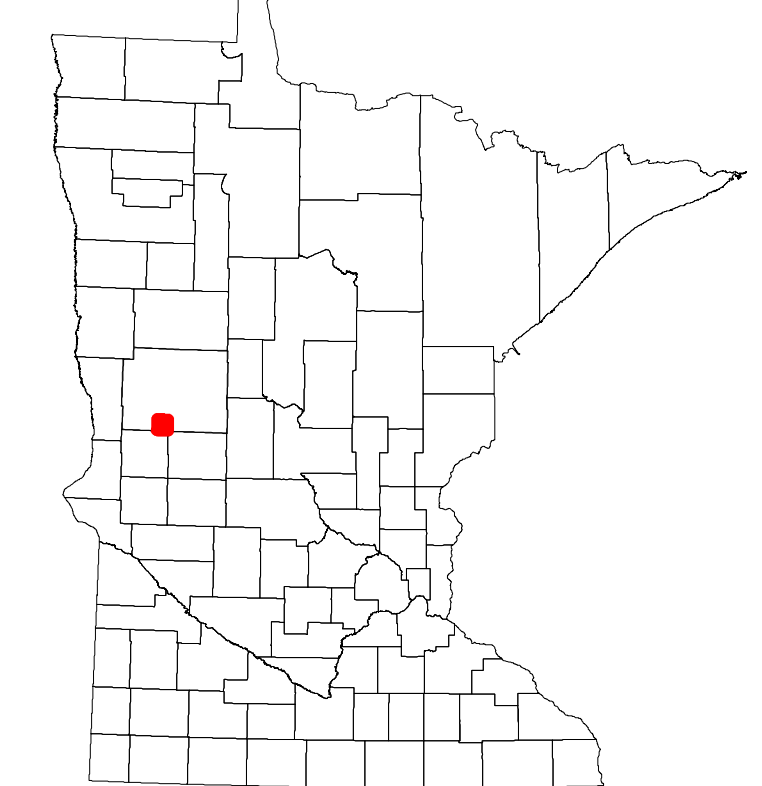
1 in = 1,600 ft
2024



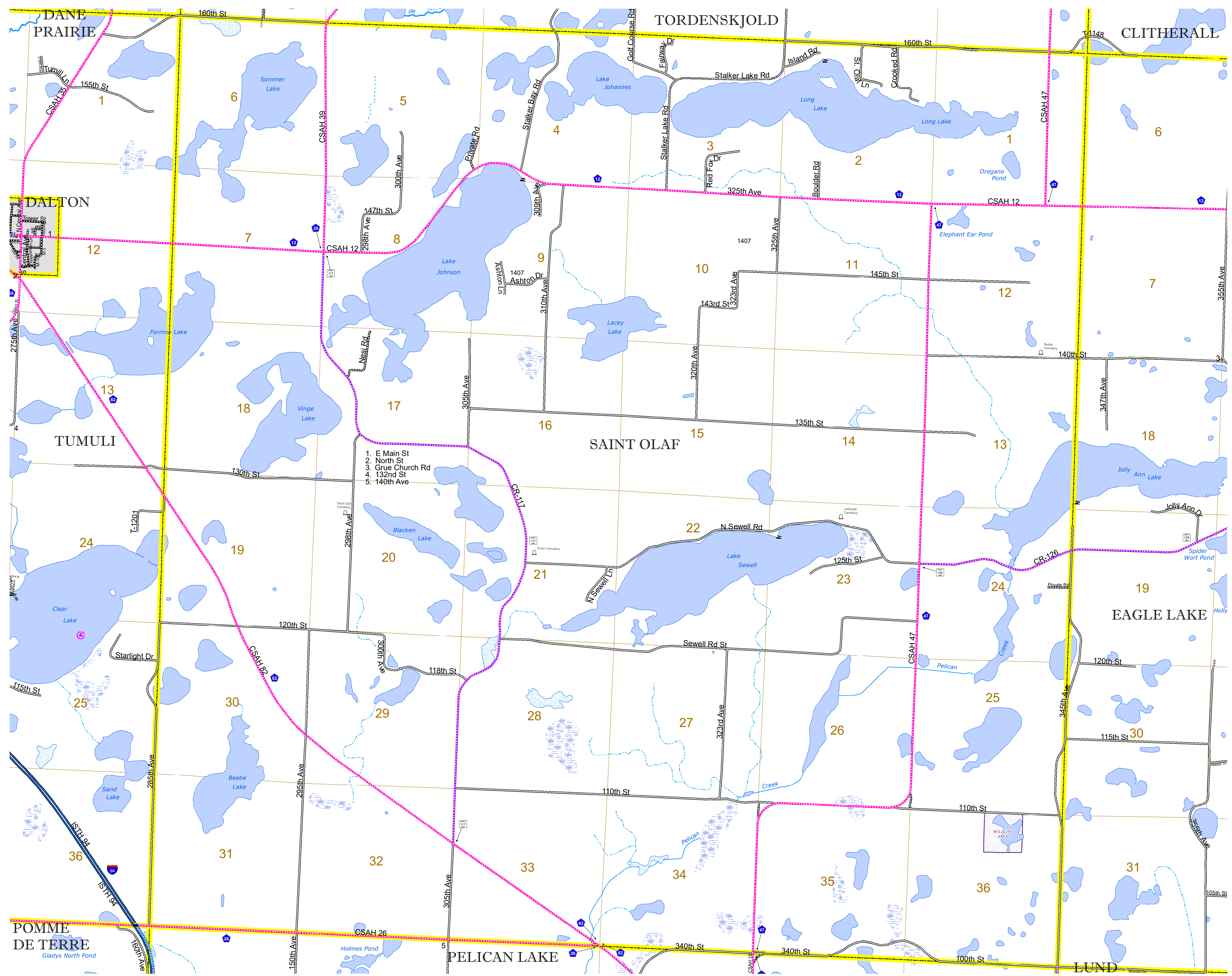
Projection:
Transverse Mercator
NAD 1986
UTM Zone 15

North American Datum
of 1986

ROAD AND ROADWAY FEATURES		BOUNDARY FEATURES	
INTERSTATE	CONCRETE	STATE OF MINNESOTA	SECTION
US HIGHWAY	BITUMINOUS	COUNTY	MILITARY
MN HIGHWAY	GRAVEL	MUNICIPALITY	VOYAGEURS NATIONAL PARK
COUNTY STATE AID HIGHWAY	DIRT/UNIMPROVED	UNORGANIZED TERRITORY	BOUNDARY WATERS CANOE AREA WILDERNESS
COUNTY ROAD	OTHER	FEDERAL ADJUSTED URBAN AREA (2014)	STATE PARK
TOWNSHIP ROAD	UNKNOWN	CIVIL TOWNSHIP	REGIONAL PARK
UNORGANIZED TERRITORY ROAD		CONGRESSIONAL TOWNSHIP	NATIONAL FOREST
OTHER ROADS		UNINCORPORATED COMMUNITY	NATIONAL AND STATE FOREST
Municipal	RAMP OR CONNECTOR		STATE FOREST
Private	INTERSTATE EXIT		NATIONAL TRAIL
National Monument	GREAT RIVER ROAD		WILDLIFE REFUGE AREA
National Wildlife Site			WILDLIFE MANAGEMENT AREA
National Forest			HYDROLOGIC FEATURES
State Park			RIVER OR STREAM (PERENNIAL)
Present			LAKE, POND OR RESERVOIR
			STREAM (INTERMITTENT)
			DRAINAGE DITCH
			WETLAND
			ISLAND OR LAND
			REGIONAL WATERSHED



Population (U.S. Census 2010): 352



To request information from this document in an alternative format, call 651-366-4718 or 1-800-657-3774 (Greater Minnesota); 711 or 1-800-627-3529 (Minnesota Relay). You may also send an e-mail to ADArequest.dot@state.mn.us. (Please request at least one week in advance.)