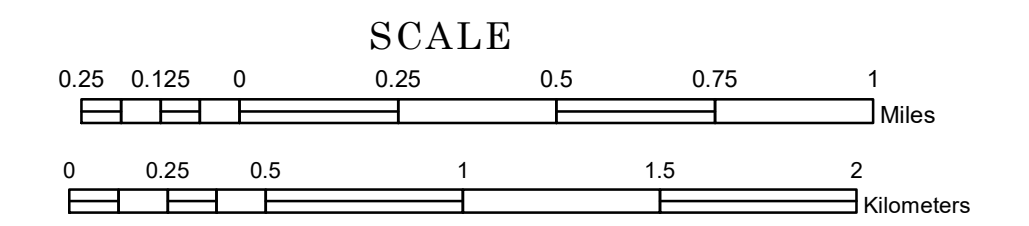


TOWNSHIP OF BRAY

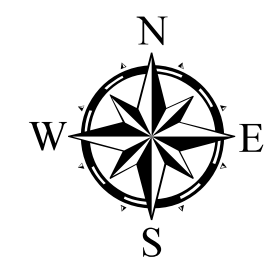
PREPARED BY THE
MINNESOTA DEPARTMENT OF TRANSPORTATION
OFFICE OF TRANSPORTATION SYSTEM MANAGEMENT

IN COOPERATION WITH
U.S. DEPARTMENT OF TRANSPORTATION
FEDERAL HIGHWAY ADMINISTRATION



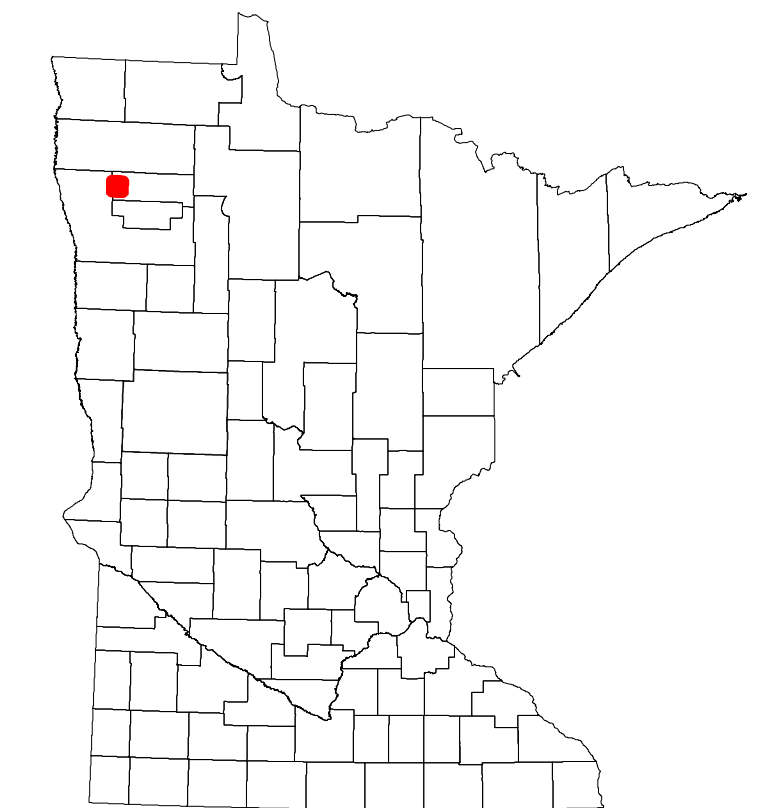
2024

Projection:
Transverse Mercator
NAD 1986
UTM Zone 15

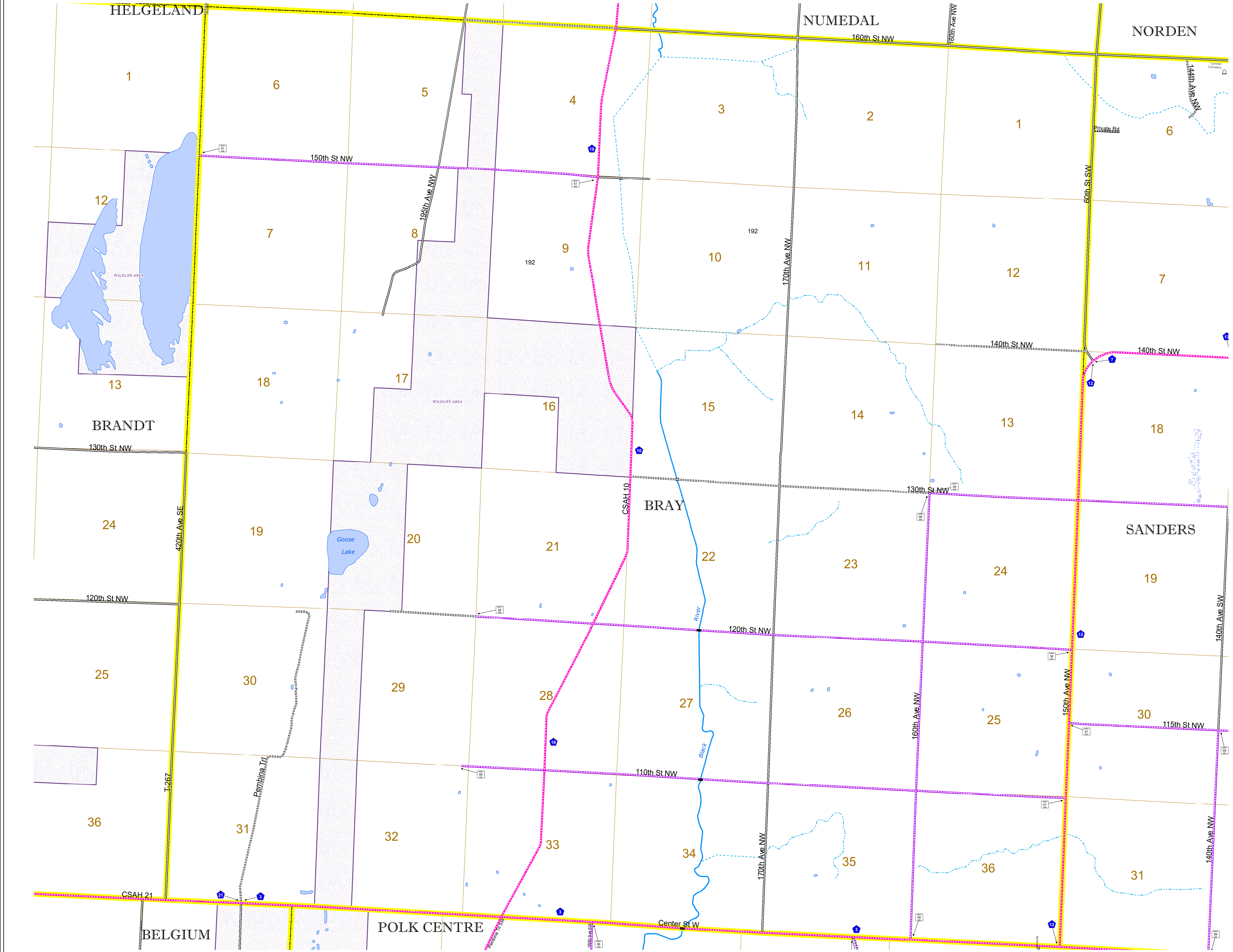


North American Datum
of 1986

ROAD AND ROADWAY FEATURES		AVIATION FEATURES	
INTERSTATE	CONCRETE	COMMERCIAL AIRPORT	GENERAL AIRPORT
US HIGHWAY	BITUMINOUS	NORTHSTAR STATION (COMMUTER)	AIRSTRIP
MN HIGHWAY	GRAVEL	SEAPLANE	SEAPLANE
COUNTY STATE AID HIGHWAY	DIRT/UNIMPROVED	AIRPORT RUNWAY	AIRPORT RUNWAY
COUNTY ROAD	OTHER	BOUNDARY FEATURES	BOUNDARY FEATURES
TOWNSHIP ROAD	UNKNOWN	TRIBAL LAND	TRIBAL LAND
UNORGANIZED TERRITORY ROAD	UNKNOWN	STATE OF MINNESOTA	STATE OF MINNESOTA
OTHER ROADS	RAMP OR CONNECTOR	COUNTY	COUNTY
Municipal	INTERSTATE EXIT	MUNICIPALITY	MUNICIPALITY
Private	GREAT RIVER ROAD	UNORGANIZED TERRITORY	UNORGANIZED TERRITORY
National Monument	RAILROAD AND RAILWAY FEATURES	FEDERAL ADJUSTED URBAN AREA (2014)	FEDERAL ADJUSTED URBAN AREA (2014)
National Wildlife Refuge	EMPIRE BUILDER STATION (AMTRAK)	CIVIL TOWNSHIP	CIVIL TOWNSHIP
State Game Preserve	NORTHSTAR STATION (COMMUTER)	CONGRESSIONAL TOWNSHIP	CONGRESSIONAL TOWNSHIP
State Park	LIGHT RAIL	CITY CENTERS	CITY CENTERS
Present	BLUE LINE	STATE CAPITAL	STATE CAPITAL
	GREEN LINE	COUNTY SEAT	COUNTY SEAT
	INFRASTRUCTURE FEATURES	CITY CENTER	CITY CENTER
	LONG BRIDGE (200' OR GREATER SPAN)	UNINCORPORATED COMMUNITY	UNINCORPORATED COMMUNITY
	MAJOR BRIDGE (20' TO 200' SPAN)	PUBLIC SERVICE FEATURES	PUBLIC SERVICE FEATURES
	MINOR BRIDGE (5' TO 20' SPAN)	MNDOT OFFICE	MNDOT OFFICE
	LOCK AND DAM	HIGHWAY PATROL DISTRICT OFFICE	HIGHWAY PATROL DISTRICT OFFICE
		STATE TRAVEL INFORMATION CENTER	STATE TRAVEL INFORMATION CENTER
		REST AREA (FULL SERVICE)	REST AREA (FULL SERVICE)
		REST AREA (VAULT TOILET)	REST AREA (VAULT TOILET)
		WAYSIDE (VAULT OR PIT TOILET)	WAYSIDE (VAULT OR PIT TOILET)
		PARK AND RIDE LOT	PARK AND RIDE LOT
		PORT OF ENTRY	PORT OF ENTRY
		PUBLIC ACCESS POINT	PUBLIC ACCESS POINT
		MN STATE COLLEGE AND UNIVERSITY SYSTEM (MNSCU)	MN STATE COLLEGE AND UNIVERSITY SYSTEM (MNSCU)
		UNIVERSITY OF MN SYSTEM	UNIVERSITY OF MN SYSTEM
		FARSGROUNDS	FARSGROUNDS
		CULTURAL FEATURES	CULTURAL FEATURES
		STATE HISTORICAL MARKER	STATE HISTORICAL MARKER
		HISTORIC DISTRICT	HISTORIC DISTRICT
		HISTORIC SITE	HISTORIC SITE
		MONUMENT	MONUMENT
		HYDROLOGIC FEATURES	HYDROLOGIC FEATURES
		RIVER OR STREAM (PERENNIAL)	RIVER OR STREAM (PERENNIAL)
		LAKE, POND OR RESERVOIR	LAKE, POND OR RESERVOIR
		STREAM (INTERMITTENT)	STREAM (INTERMITTENT)
		DRAINAGE DITCH	DRAINAGE DITCH
		WETLAND	WETLAND
		ISLAND OR LAND	ISLAND OR LAND
		REGIONAL WATERSHED	REGIONAL WATERSHED



Population (U.S. Census 2010): 64



To request information from this document in an alternative format, call 651-366-4718 or 1-800-657-3774 (Greater Minnesota); 711 or 1-800-627-3529 (Minnesota Relay). You may also send an e-mail to ADRequest.dot@state.mn.us. (Please request at least one week in advance.)