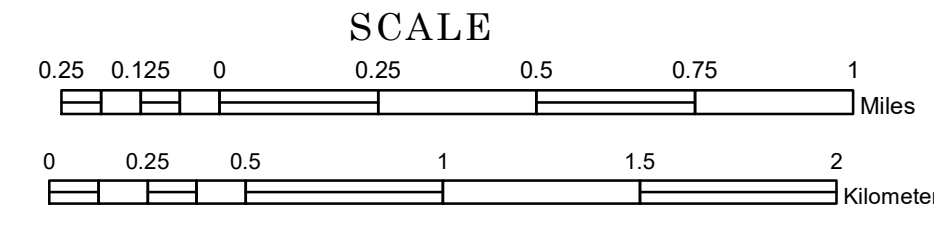


TOWNSHIP OF CLOVER LEAF

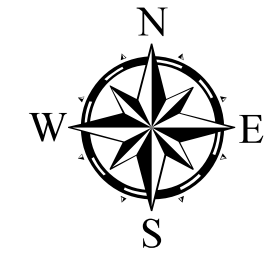
PREPARED BY THE
MINNESOTA DEPARTMENT OF TRANSPORTATION
OFFICE OF TRANSPORTATION SYSTEM MANAGEMENT

IN COOPERATION WITH
U.S. DEPARTMENT OF TRANSPORTATION
FEDERAL HIGHWAY ADMINISTRATION



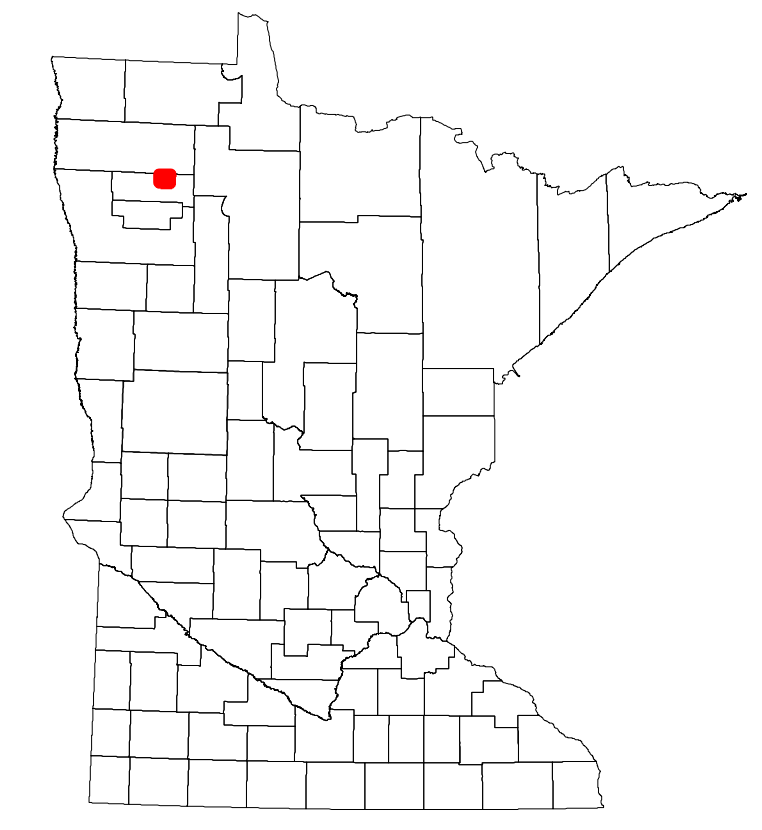
2024

Projection:
Transverse Mercator
NAD 1986
UTM Zone 15

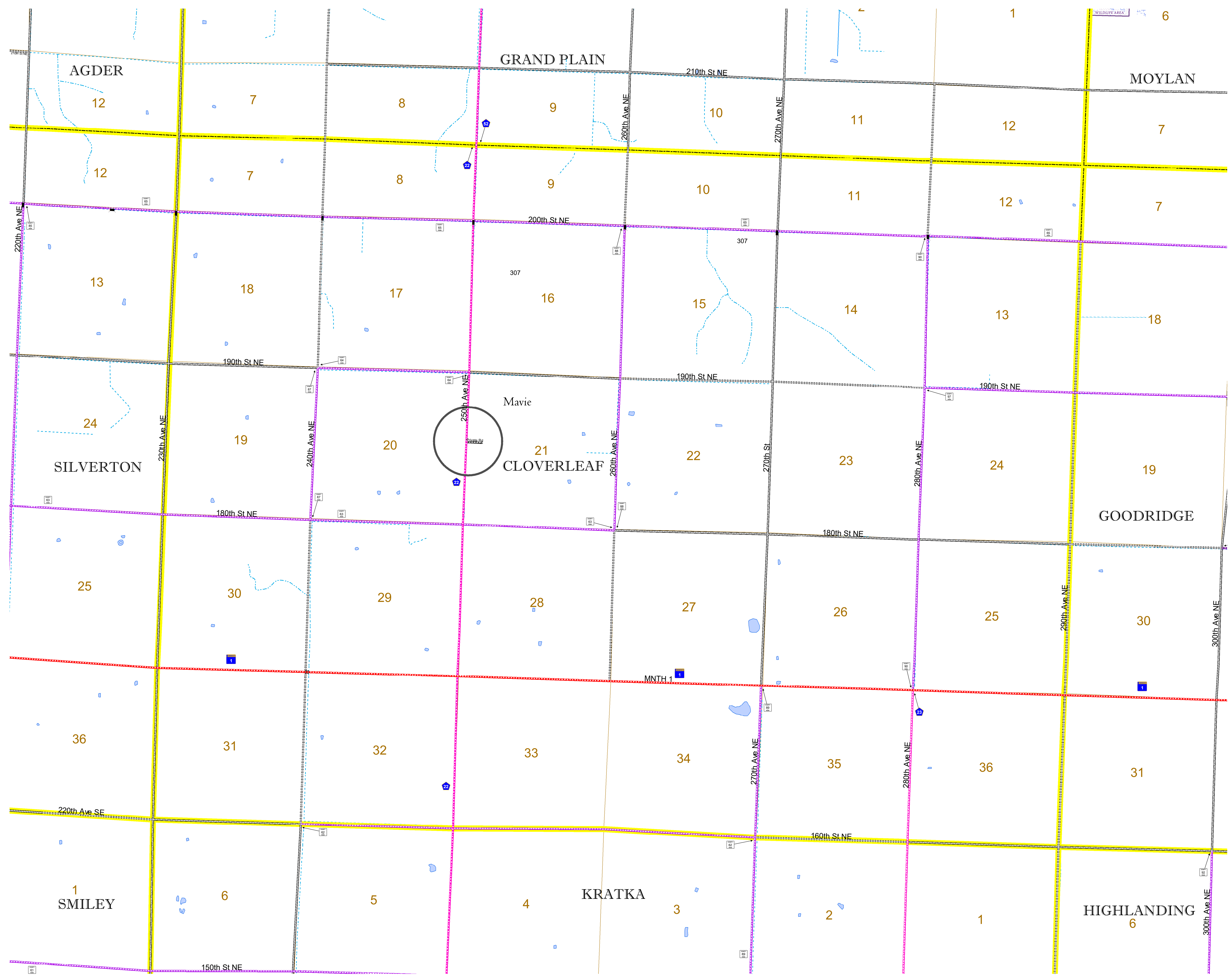


North American Datum
of 1986

ROAD AND ROADWAY FEATURES		BOUNDARY FEATURES	
INTERSTATE	CONCRETE	TRIAL LAND	TRIBAL LAND
US HIGHWAY	BITUMINOUS	STATE OF MINNESOTA	COUNTY
MN HIGHWAY	GRAVEL	MUNICIPALITY	MUNICIPALITY
COUNTY STATE AID HIGHWAY	DIRT/UNIMPROVED	UNINCORPORATED	UNINCORPORATED
COUNTY ROAD	OTHER	FEDERAL ADJUSTED URBAN AREA (2014)	CIVIL TOWNSHIP
TOWNSHIP ROAD	UNKNOWN	CIVIL TOWNSHIP	CIVIL TOWNSHIP
UNORGANIZED TERRITORY ROAD		CONGRESSIONAL TOWNSHIP	CONGRESSIONAL TOWNSHIP
OTHER ROADS		MILITARY	MILITARY
Municipal	RAMP OR CONNECTOR	VOYAGEURS NATIONAL PARK	VOYAGEURS NATIONAL PARK
Nature Service	INTERSTATE EXIT	BOUNDARY WATERS GANOE AREA WILDERNESS	BOUNDARY WATERS GANOE AREA WILDERNESS
Multispan	GREAT RIVER ROAD	STATE PARK	STATE PARK
		NATIONAL FOREST	NATIONAL FOREST
		NATIONAL AND STATE FOREST	NATIONAL AND STATE FOREST
		STATE FOREST	STATE FOREST
		NATIONAL TRAIL	NATIONAL TRAIL
		WILDLIFE REFUGE AREA	WILDLIFE REFUGE AREA
		WILDLIFE MANAGEMENT AREA	WILDLIFE MANAGEMENT AREA
		HYDROLOGIC FEATURES	HYDROLOGIC FEATURES
		RIVER OR STREAM (PERENNIAL)	RIVER OR STREAM (PERENNIAL)
		LAKE, POND OR RESERVOIR	LAKE, POND OR RESERVOIR
		STREAM (INTERMITTENT)	STREAM (INTERMITTENT)
		DRAINAGE DITCH	DRAINAGE DITCH
		WETLAND	WETLAND
		ISLAND OR LAND	ISLAND OR LAND
		REGIONAL WATERSHED	REGIONAL WATERSHED



Population (U.S. Census 2010): 84



To request information from this document in an alternative format, call 651-366-4718 or 1-800-627-3774 (Greater Minnesota); 711 or 1-800-627-3529 (Minnesota Relay). You may also send an e-mail to ADARrequest.dot@state.mn.us. (Please request at least one week in advance.)