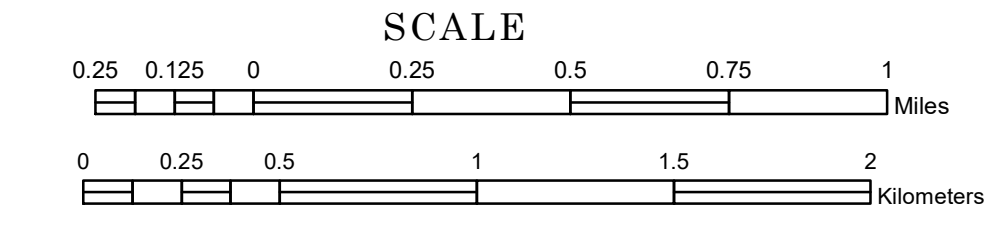


TOWNSHIP OF NUMEDAL

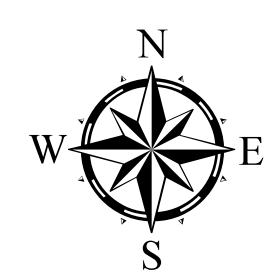
PREPARED BY THE
MINNESOTA DEPARTMENT OF TRANSPORTATION
OFFICE OF TRANSPORTATION SYSTEM MANAGEMENT

IN COOPERATION WITH
U.S. DEPARTMENT OF TRANSPORTATION
FEDERAL HIGHWAY ADMINISTRATION

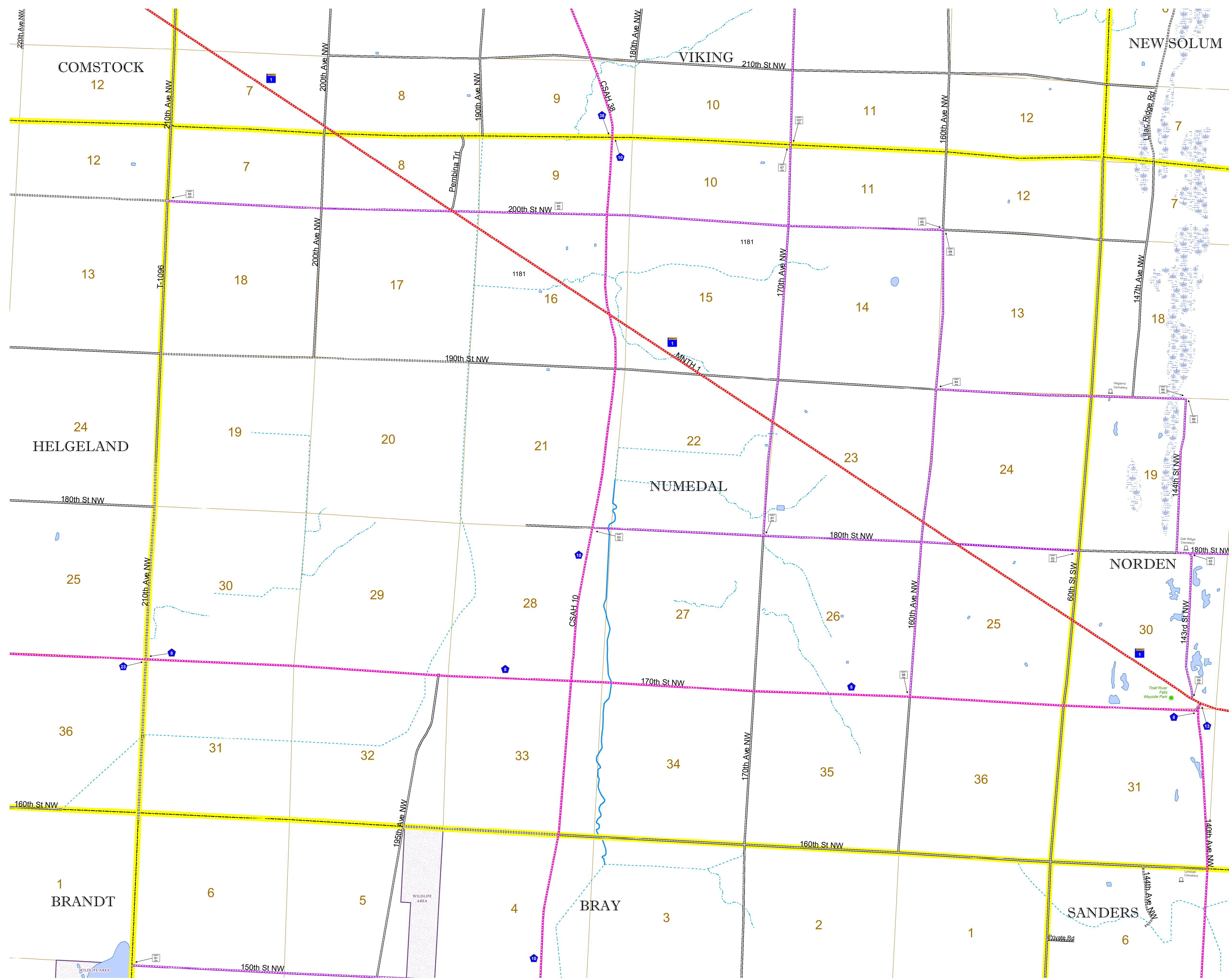


1 in = 1,600 ft
2024

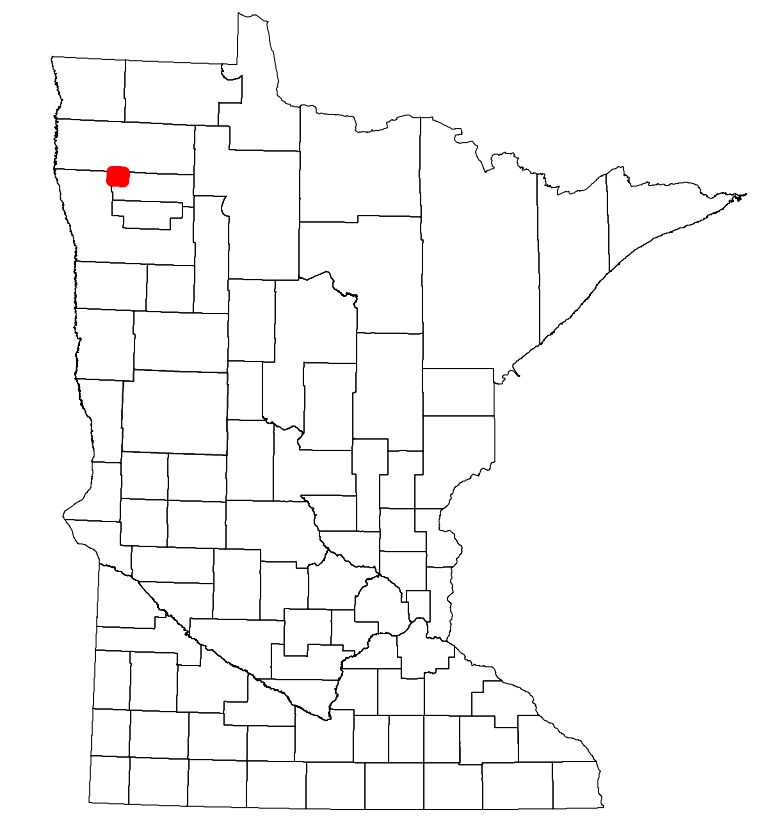
Projection:
Transverse Mercator
NAD 1986
UTM Zone 15



North American Datum
of 1986



ROAD AND ROADWAY FEATURES			
INTERSTATE	CONCRETE		
US HIGHWAY	BITUMINOUS		
MN HIGHWAY	GRAVEL		
COUNTY STATE AID HIGHWAY	DIRT/UNIMPROVED		
COUNTY ROAD	OTHER		
TOWNSHIP ROAD	UNKNOWN		
UNORGANIZED TERRITORY ROAD			
OTHER ROADS	RAMP OR CONNECTOR		
Municipal	National Monument	State Forest	INTERSTATE EXIT
Nature Service	National Park	National Wildlife	State Game
Museum	National Forest	State Park	Present
RAILROAD AND RAILWAY FEATURES		AVIATION FEATURES	
EMPIRE BUILDER STATION (AMTRAK)	GENERAL AIRPORT	COMMERCIAL AIRPORT	
NORTHSTAR STATION (COMPUTER)	AIRSTRIP		
LIGHT RAIL	SEAPLANE		
BLUE LINE	AIRPORT RUNWAY		
GREEN LINE			
INFRASTRUCTURE FEATURES		BOUNDARY FEATURES	
LONG BRIDGE (200' or Greater Span)	STATE OF MINNESOTA	TRIBAL LAND	
MAJOR BRIDGE (20' to 200' Span)	COUNTY		
MINOR BRIDGE (5' to 20' Span)	MUNICIPALITY		
DAM	UNORGANIZED TERRITORY		
LOCK AND DAM	FEDERAL ADJUSTED URBAN AREA (2014)		
	CIVIL TOWNSHIP		
	CONGRESSIONAL TOWNSHIP		
	SECTION		
	MILITARY		
	VOYAGEURS NATIONAL PARK		
	BOUNDARY WATERS CANOE AREA WILDERNESS		
	STATE PARK		
	REGIONAL PARK		
	NATIONAL FOREST		
	NATIONAL AND STATE FOREST		
	STATE FOREST		
	NATIONAL TRAIL		
	WILDLIFE REFUGE AREA		
	WILDLIFE MANAGEMENT AREA		
	HYDROLOGIC FEATURES		
	RIVER OR STREAM (PERENNIAL)		
	LAKE, POND OR RESERVOIR		
	STREAM (INTERMITTENT)		
	DRAINAGE DITCH		
	WETLAND		
	ISLAND OR LAND		
	REGIONAL WATERSHED		
	CULTURAL FEATURES		
	STATE HISTORICAL MARKER		
	HISTORIC DISTRICT		
	HISTORIC SITE		
	MONUMENT		
	CITY CENTERS		
	STATE CAPITAL		
	COUNTY SEAT		
	CITY CENTER		
	UNINCORPORATED COMMUNITY		
	PUBLIC SERVICE FEATURES		
	MNDOT OFFICE		
	MNDOT TRUCK STATION		
	HIGHWAY PATROL DISTRICT OFFICE		
	STATE TRAVEL INFORMATION CENTER		
	REST AREA (Full Service)		
	REST AREA (Vault Toilet)		
	WAYSIDE (Vault or Pit Toilet)		
	PARK AND RIDE LOT		
	PORT OF ENTRY		
	PUBLIC ACCESS POINT		
	MN STATE COLLEGE AND UNIVERSITY SYSTEM (MNSCU)		
	UNIVERSITY OF MN SYSTEM		
	FAIRGROUNDS		



Population (U.S. Census 2010): 90

To request information from this document in an alternative format, call 651-366-4718 or 1-800-657-3774 (Greater Minnesota); 711 or 1-800-627-3529 (Minnesota Relay). You may also send an e-mail to ADAREquest.dot@state.mn.us. (Please request at least one week in advance.)