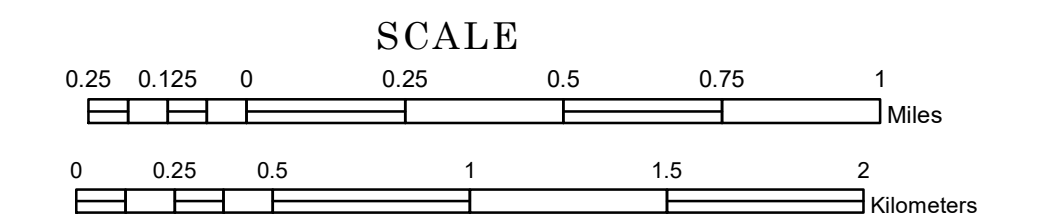


TOWNSHIP OF SANDERS

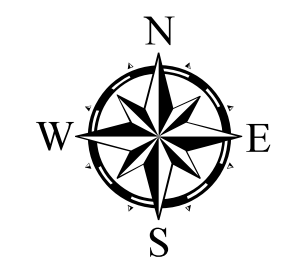
PREPARED BY THE
MINNESOTA DEPARTMENT OF TRANSPORTATION
OFFICE OF TRANSPORTATION SYSTEM MANAGEMENT

IN COOPERATION WITH
U.S. DEPARTMENT OF TRANSPORTATION
FEDERAL HIGHWAY ADMINISTRATION



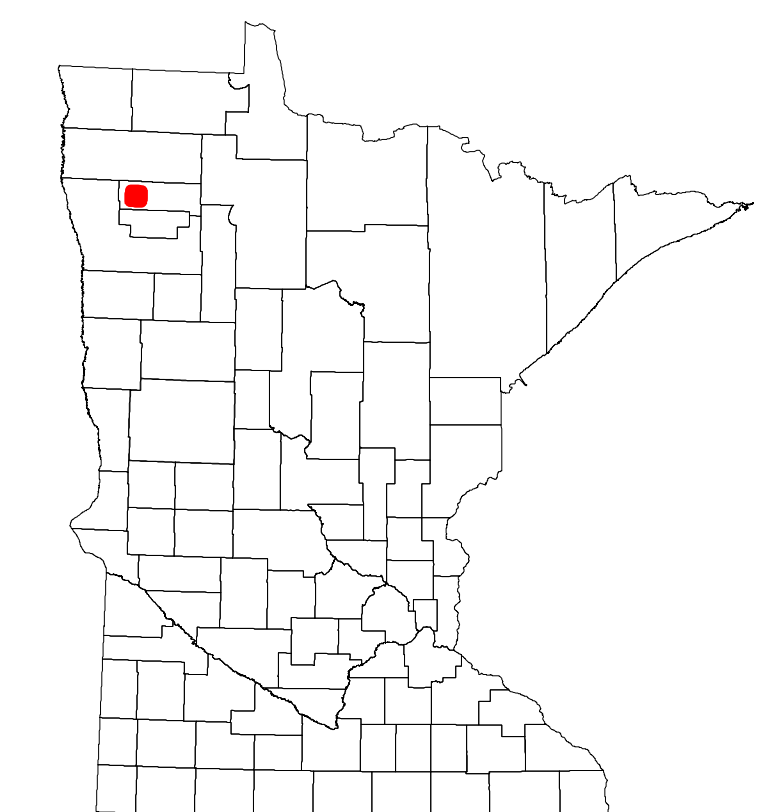
2024

Projection:
Transverse Mercator
NAD 1986
UTM Zone 15

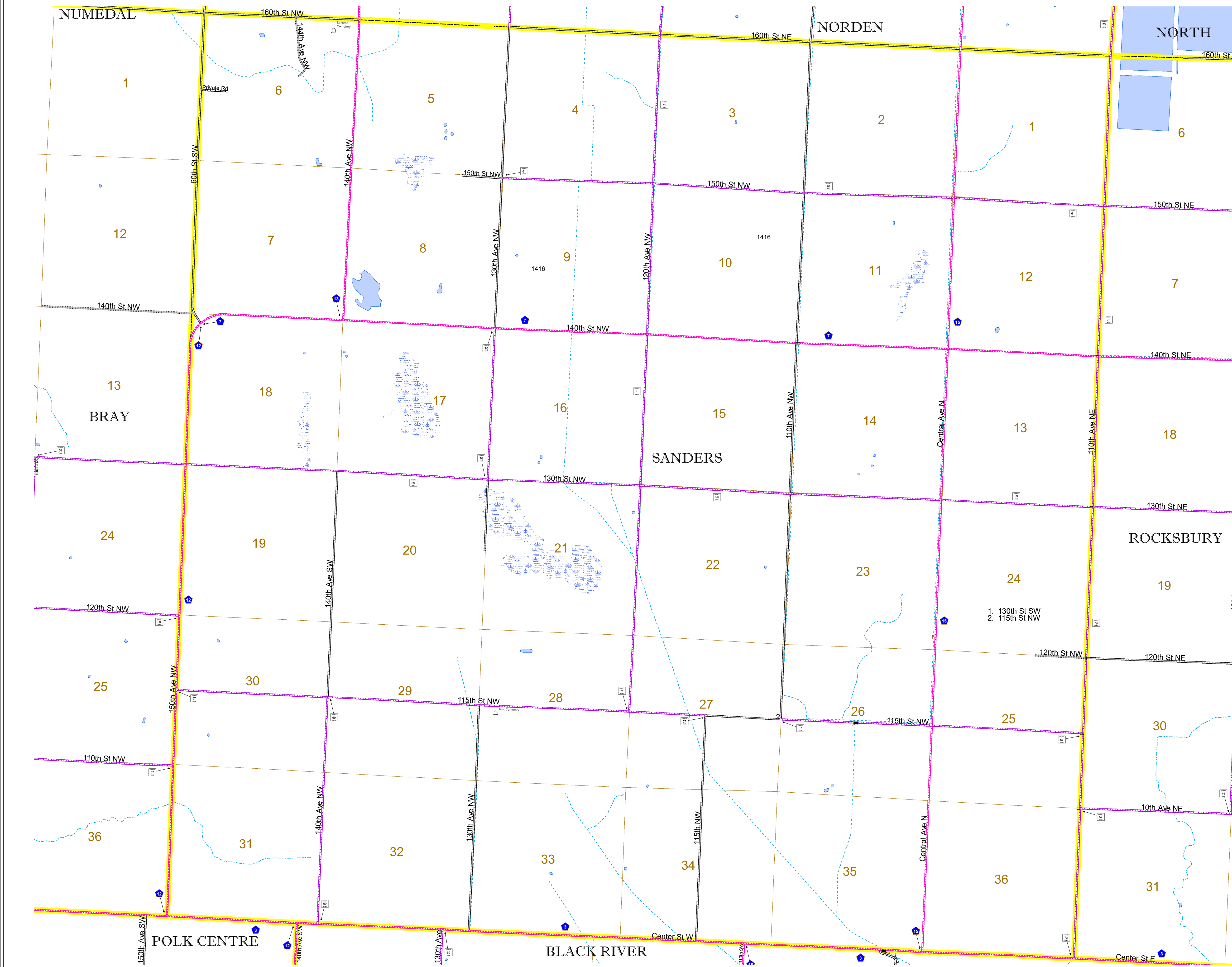


North American Datum
of 1986

ROAD AND ROADWAY FEATURES		AVIATION FEATURES	
INTERSTATE	CONCRETE	COMMERCIAL AIRPORT	GENERAL AIRPORT
US HIGHWAY	BITUMINOUS	AIRSTRIP	SEAPLANE
MN HIGHWAY	GRAVEL	AIRPORT RUNWAY	AVIATION FEATURES
COUNTY STATE AID HIGHWAY	DIRT/UNIMPROVED	INTERSTATE EXIT	
COUNTY ROAD	OTHER	RAILROAD AND RAILWAY FEATURES	
TOWNSHIP ROAD	UNKNOWN	EMPIRE BUILDER STATION (AMTRAK)	
UNORGANIZED TERRITORY ROAD		NORTHSTAR STATION (COMPUTER)	
OTHER ROADS		LIGHT RAIL	
Municipal		BLUE LINE	
Private		GREEN LINE	
National Monument		INFRASTRUCTURE FEATURES	
State Forest		LONG BRIDGE (200' or Greater Span)	
State Game		MAJOR BRIDGE (20' to 200' Span)	
State Park		MINOR BRIDGE (5' to 20' Span)	
Present		DAM	
LOCK AND DAM		LOCK AND DAM	
CITY CENTERS		STATE CAPITAL	
CITY CENTER		COUNTY SEAT	
UNINCORPORATED COMMUNITY		SECTION	
MILITARY		VOYAGEURS NATIONAL PARK	
BOUNDARY WATERS PARK		STATE PARK	
REGIONAL PARK		NATIONAL FOREST	
NATIONAL AND STATE FOREST		STATE FOREST	
NATIONAL TRAIL		WILDLIFE REFUGUE AREA	
WILDLIFE REFUGUE AREA		WILDLIFE MANAGEMENT AREA	
HYDROLOGIC FEATURES		RIVER OR STREAM (PERMANENT)	
LAKE, POND OR RESERVOIR		STREAM (INTERMITTENT)	
DRAINAGE DITCH		WETLAND	
ISLAND OR LAND MONUMENT		REGIONAL WATERSHED	



Population (U.S. Census 2010): 298



To request information from this document in an alternative format, call 651-366-4718 or 1-800-657-3774 (Greater Minnesota); 711 or 1-800-627-3529 (Minnesota Relay). You may also send an e-mail to ADARquest.dot@state.mn.us. (Please request at least one week in advance.)