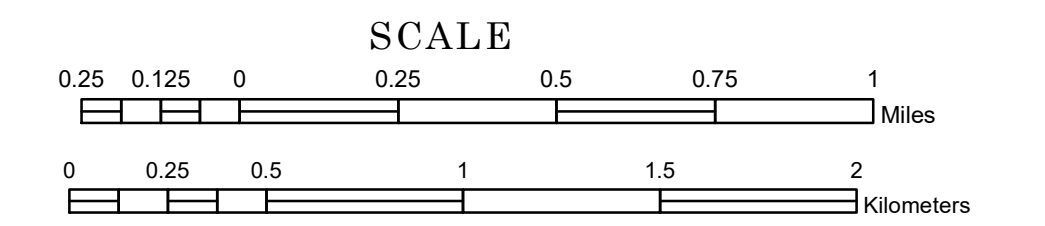


TOWNSHIP OF ELMER

PREPARED BY THE
MINNESOTA DEPARTMENT OF TRANSPORTATION
OFFICE OF TRANSPORTATION SYSTEM MANAGEMENT

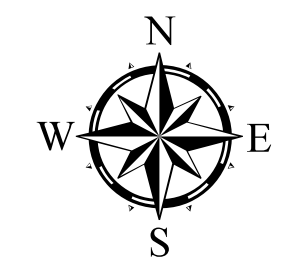
IN COOPERATION WITH
U.S. DEPARTMENT OF TRANSPORTATION
FEDERAL HIGHWAY ADMINISTRATION



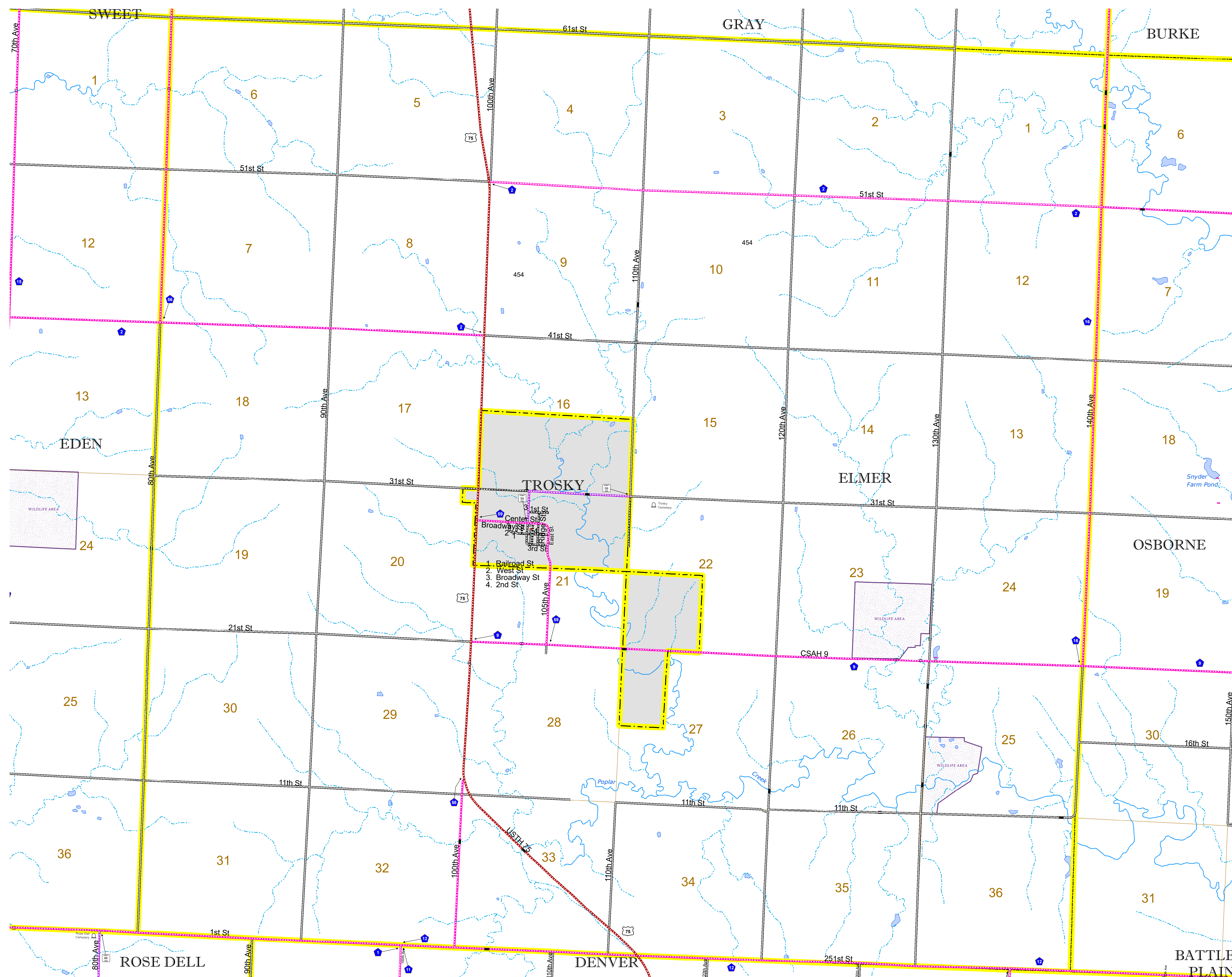
1 in = 1,600 ft

2023

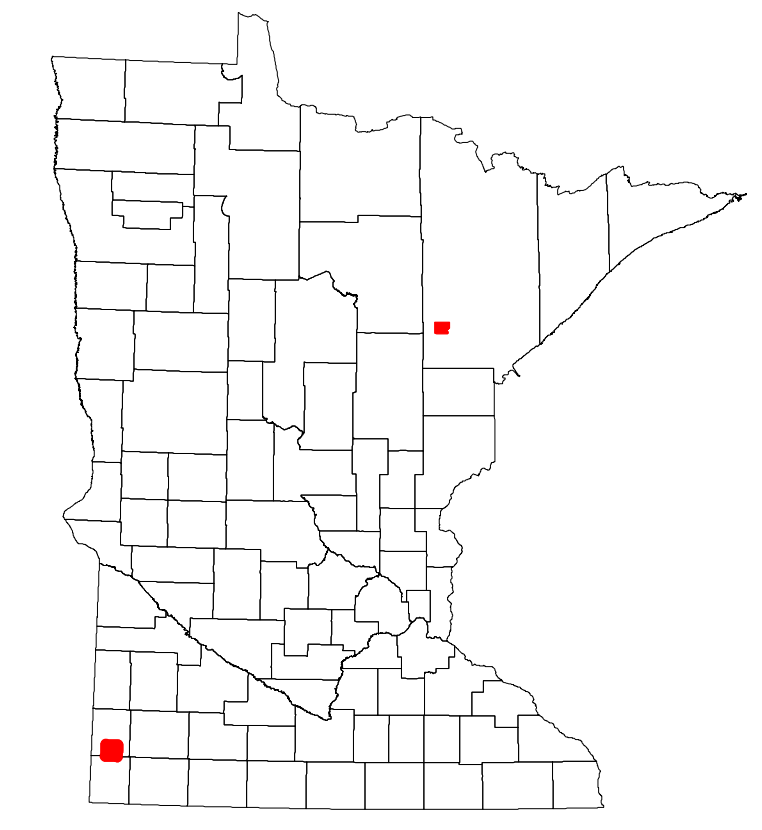
Projection:
Transverse Mercator
NAD 1986
UTM Zone 15



North American Datum
of 1986



ROAD AND ROADWAY FEATURES		AVIATION FEATURES	
INTERSTATE		CONCRETE	
US HIGHWAY		BITUMINOUS	
MN HIGHWAY		GRAVEL	
COUNTY STATE AID HIGHWAY		DIRT/UNIMPROVED	
COUNTY ROAD		OTHER	
TOWNSHIP ROAD		UNKNOWN	
UNORGANIZED TERRITORY ROAD		RAMP OR CONNECTOR	
OTHER ROADS		INTERSTATE EXIT	
Municipal		COMMERCIAL AIRPORT	
Private		GENERAL AIRPORT	
National Monument		AIRSTRIP	
Nature Service		SEAPLANE	
Military		AIRPORT RUNWAY	
National Wildlife Refuge			
National Forest			
State Park			
Preserve			
RAILROAD AND RAILWAY FEATURES		BOUNDARY FEATURES	
EMPIRE BUILDER STATION (AMTRAK)		TRIBAL LAND	
NORTHSTAR STATION (COMPUTER)		STATE OF MINNESOTA	
LIGHT RAIL		COUNTY	
BLUE LINE		MUNICIPALITY	
GREEN LINE		UNORGANIZED TERRITORY	
INFRASTRUCTURE FEATURES		FEDERAL ADJUSTED URBAN AREA (2014)	
LONG BRIDGE (200' OR GREATER SPAN)		CIVIL TOWNSHIP	
MAJOR BRIDGE (20' TO 200' SPAN)		CONGRESSIONAL TOWNSHIP	
MINOR BRIDGE (5' TO 20' SPAN)		SECTION	
DAM		MILITARY	
LOCK-AND-DAM		VOYAGEURS NATIONAL PARK	
CITY CENTERS		BOUNDARY WATERS CANOE AREA WILDERNESS	
STATE CAPITAL		STATE PARK	
COUNTY SEAT		REGIONAL PARK	
CITY CENTER		NATIONAL FOREST	
UNINCORPORATED COMMUNITY		NATIONAL AND STATE FOREST	
PUBLIC SERVICE FEATURES		STATE FOREST	
MNDOT OFFICE		WILDLIFE REFUGUE AREA	
MNDOT TRUCK STATION		WILDLIFE MANAGEMENT AREA	
HIGHWAY PATROL DISTRICT OFFICE		HYDROLOGIC FEATURES	
STATE TRAVEL INFORMATION CENTER		RIVER OR STREAM (PERMANENT)	
REST AREA (FULL SERVICE)		LAKE, POND OR RESERVOIR	
REST AREA (VAULT TOILET)		STREAM (INTERMITTENT)	
WAYSIDE (VAULT OR PITY TOILET)		DRAINAGE DITCH	
PARK AND RIDE LOT		WETLAND	
PORT OF ENTRY		ISLAND OR LAND	
PUBLIC ACCESS POINT		REGIONAL WATERSHED	
MN STATE COLLEGE AND UNIVERSITY SYSTEM (MNSCU)			
UNIVERSITY OF MN SYSTEM			
FAIRGROUNDS			
CULTURAL FEATURES			
STATE HISTORICAL MARKER			
HISTORIC DISTRICT			
HISTORIC SITE			
MONUMENT			



Population (U.S. Census 2010): 231

To request information from this document in an alternative format, call 651-366-4718 or 1-800-657-3774 (Greater Minnesota); 711 or 1-800-627-3529 (Minnesota Relay). You may also send an e-mail to ADAREquest.dot@state.mn.us. (Please request at least one week in advance.)