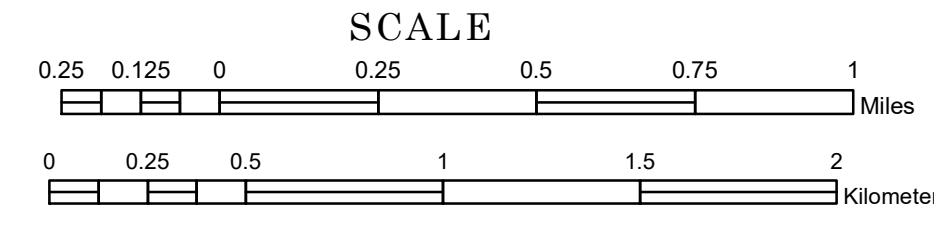


TOWNSHIP OF BRANDSVOLD

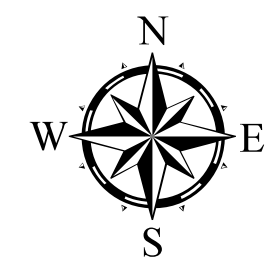
PREPARED BY THE
MINNESOTA DEPARTMENT OF TRANSPORTATION
OFFICE OF TRANSPORTATION SYSTEM MANAGEMENT

IN COOPERATION WITH
U.S. DEPARTMENT OF TRANSPORTATION
FEDERAL HIGHWAY ADMINISTRATION

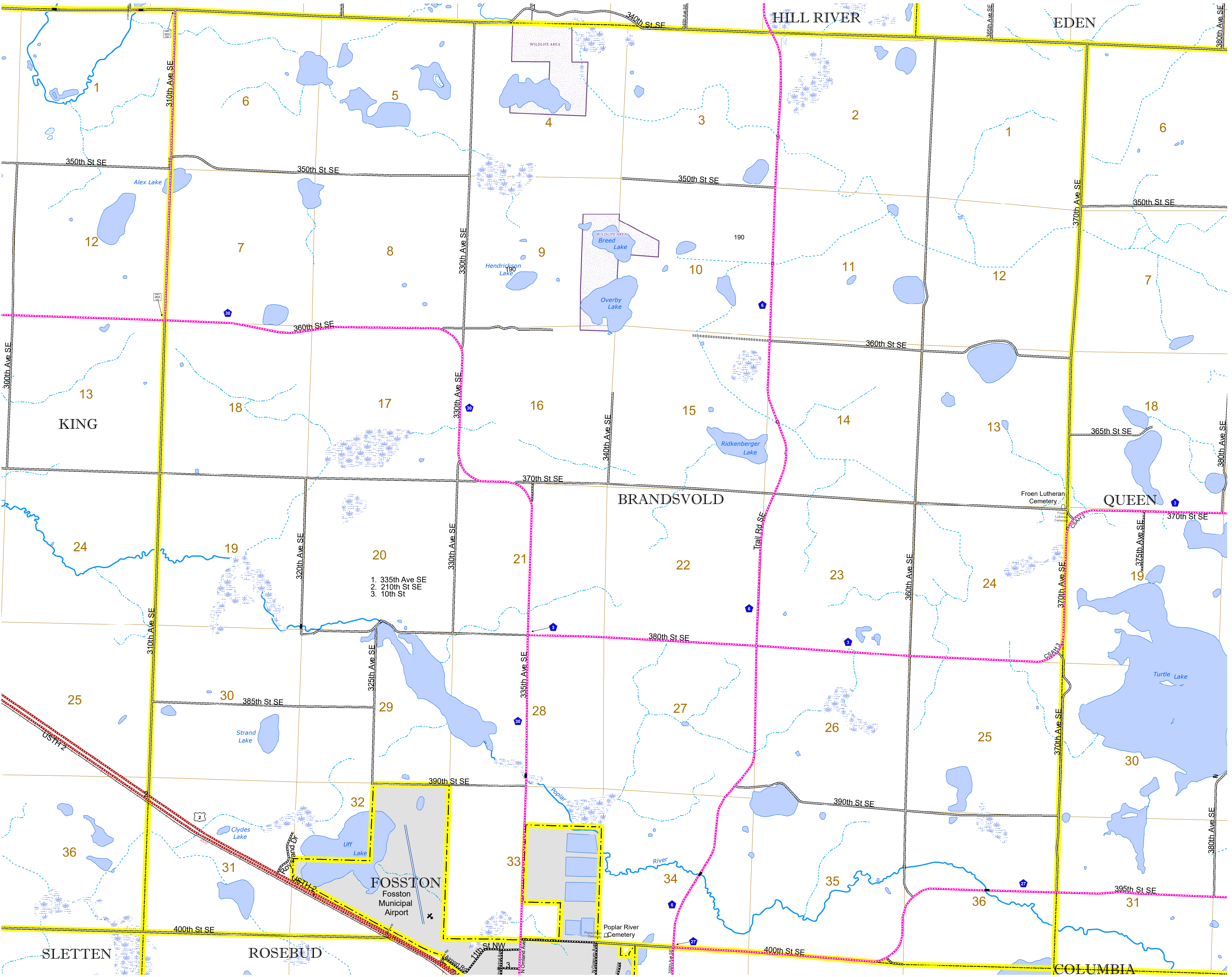


1 in = 1,600 ft
2024

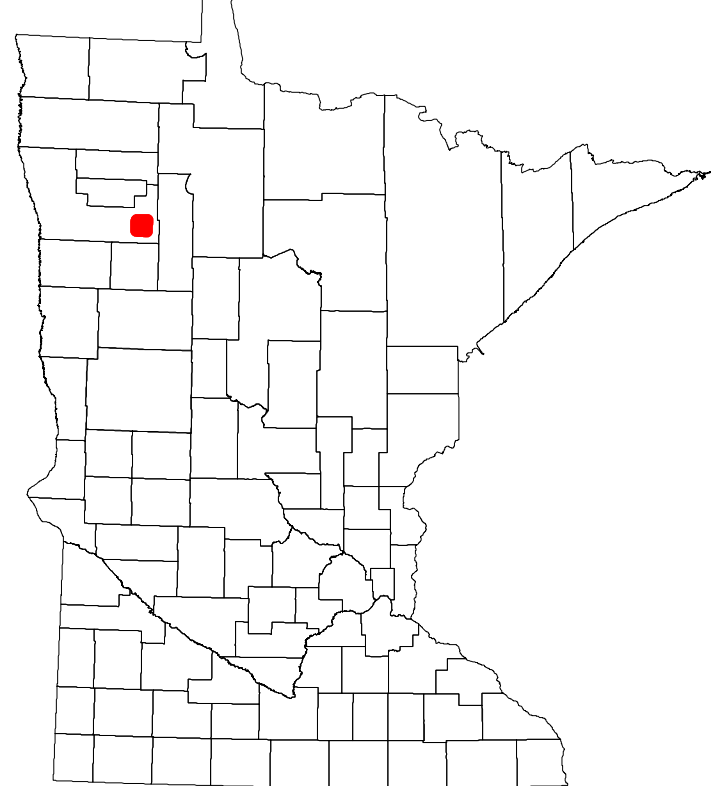
Projection:
Transverse Mercator
NAD 1986
UTM Zone 15



North American Datum
of 1986



ROAD AND ROADWAY FEATURES	
INTERSTATE	CONCRETE
US HIGHWAY	BITUMINOUS
MN HIGHWAY	GRAVEL
COUNTY STATE AID HIGHWAY	DIRT/UNIMPROVED
COUNTY ROAD	OTHER
TOWNSHIP ROAD	UNKNOWN
UNORGANIZED TERRITORY ROAD	
OTHER ROADS	
Municipal Private National Monument State Forest	RAMP OR CONNECTOR
Nature Service National Park National Wildlife State Game	INTERSTATE EXIT
Mulvan National Forest State Park Preserve	GREAT RIVER ROAD
RAILROAD AND RAILWAY FEATURES	
EMPIRE BUILDER STATION (Amtrak)	COMMERCIAL AIRPORT
NORTHSTAR STATION (Commuter)	GENERAL AIRPORT
LIGHT RAIL	AIRSTRIP
BLUE LINE	SEAPLANE
GREEN LINE	AIRPORT RUNWAY
INFRASTRUCTURE FEATURES	
LONG BRIDGE (200' or Greater Span)	TRIAL LAND
MAJOR BRIDGE (20' to 200' Span)	STATE OF MINNESOTA
MINOR BRIDGE (5' to 20' Span)	COUNTY
DAM	MUNICIPALITY
LOCK AND DAM	UNORGANIZED TERRITORY
CITY CENTERS	
STATE CAPITAL COUNTY SEAT CITY CENTER UNINCORPORATED COMMUNITY	FEDERAL ADJUSTED URBAN AREA (2014)
PUBLIC SERVICE FEATURES	
MNDOT OFFICE	SECTION
MNDOT TRUCK STATION	MILITARY
HIGHWAY PATROL DISTRICT OFFICE	VOYAGEURS NATIONAL PARK
STATE TRAVEL INFORMATION CENTER	BOUNDARY WATERS CANOE AREA WILDERNESS
REST AREA (Full Service)	STATE PARK
REST AREA (Vault Toilet)	REGIONAL PARK
WAYSIDE (Vault or Potty Toilet)	NATIONAL FOREST
PARK AND RIDE LOT	NATIONAL AND STATE FOREST
PORT OF ENTRY	STATE FOREST
PUBLIC ACCESS POINT	NATIONAL TRAIL
MN STATE COLLEGE AND UNIVERSITY SYSTEM (MNSCU)	WILDLIFE REFUGUE AREA
UNIVERSITY OF MN SYSTEM	WILDLIFE MANAGEMENT AREA
FAIRGROUNDS	HYDROLOGIC FEATURES
CULTURAL FEATURES	
STATE HISTORICAL MARKER	DRAINAGE DITCH
HISTORIC DISTRICT	WETLAND
HISTORIC SITE	ISLAND OR LAND
MONUMENT	REGIONAL WATERSHED



Population (U.S. Census 2010): 245

To request information from this document in an alternative format, call 651-366-4718 or 1-800-657-3774 (Greater Minnesota); 711 or 1-800-627-3529 (Minnesota Relay). You may also send an e-mail to ADARquest.dot@state.mn.us. (Please request at least one week in advance.)