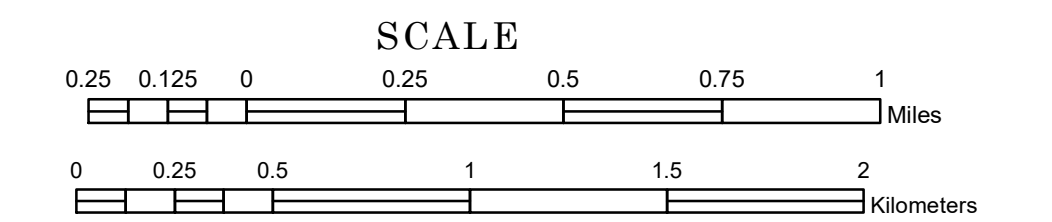


TOWNSHIP OF BRISLET

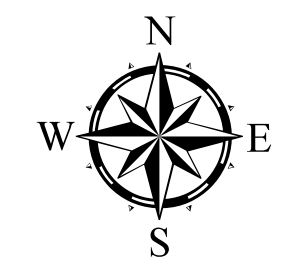
PREPARED BY THE
MINNESOTA DEPARTMENT OF TRANSPORTATION
OFFICE OF TRANSPORTATION SYSTEM MANAGEMENT

IN COOPERATION WITH
U.S. DEPARTMENT OF TRANSPORTATION
FEDERAL HIGHWAY ADMINISTRATION



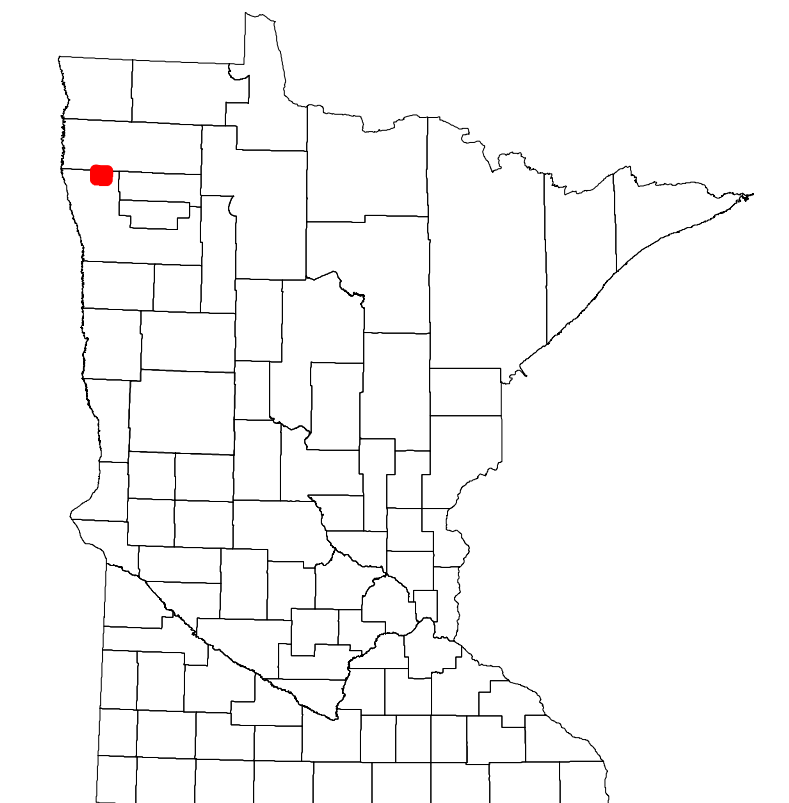
2024

Projection:
Transverse Mercator
NAD 1986
UTM Zone 15

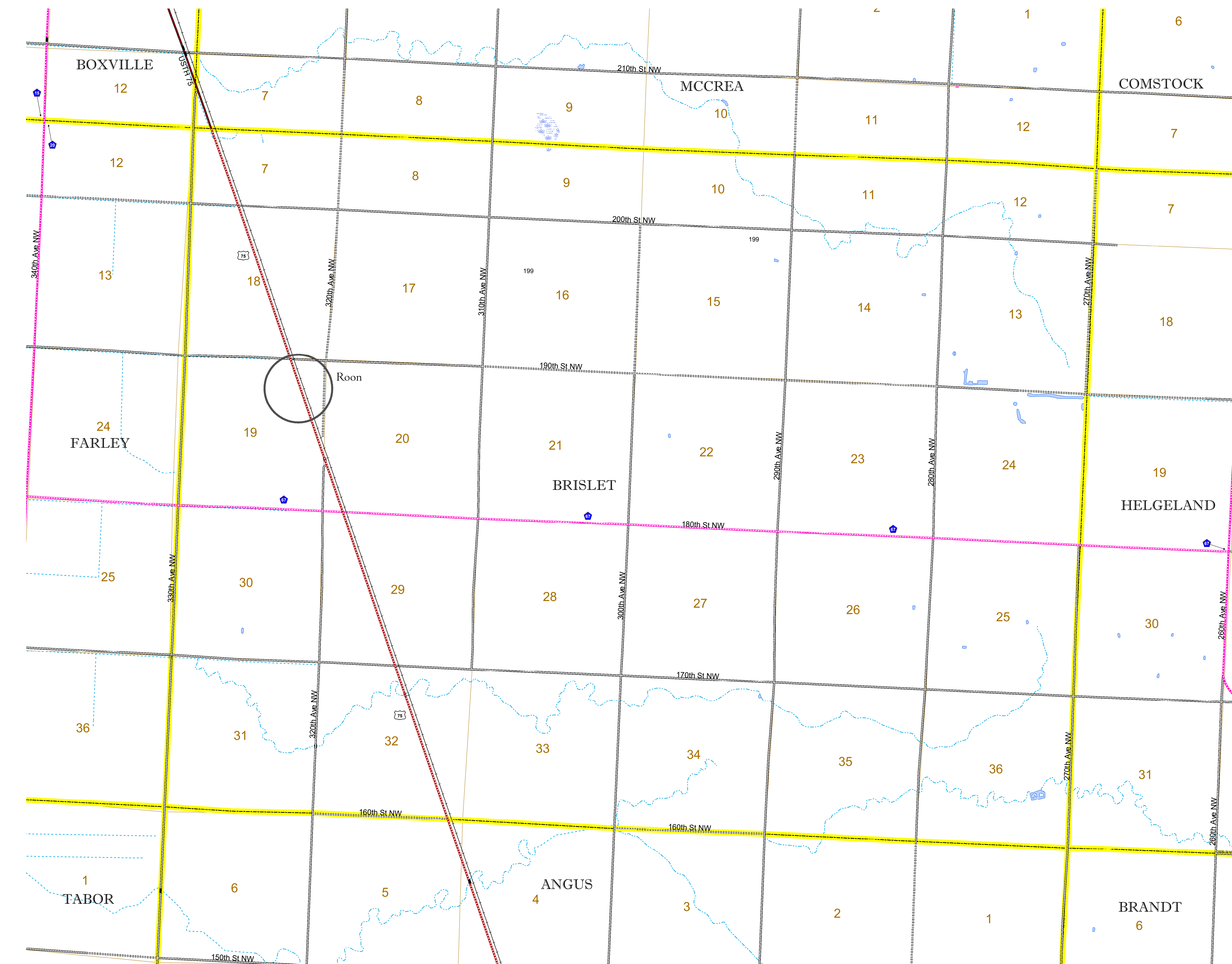


North American Datum
of 1986

ROAD AND ROADWAY FEATURES		AVIATION FEATURES	
INTERSTATE	CONCRETE	COMMERCIAL AIRPORT	GENERAL AIRPORT
US HIGHWAY	BITUMINOUS	AIRSTRIP	SEAPLANE
MN HIGHWAY	GRAVEL	AIRPORT RUNWAY	AIRPORT RUNWAY
COUNTY STATE AID HIGHWAY	DIRT/UNIMPROVED		
COUNTY ROAD	OTHER		
TOWNSHIP ROAD	UNKNOWN		
UNORGANIZED TERRITORY ROAD			
OTHER ROADS			
Municipal	Private	National Monument	State Forest
Nature Service	National Park	National Wildlife	State Game
Military	National Forest	State Park	Preserve
RAILROAD AND RAILWAY FEATURES		BOUNDARY FEATURES	
EMPIRE BUILDER STATION (AMTRAK)	TRIBAL LAND	STATE OF MINNESOTA	COUNTY
NORTHSTAR STATION (COMMUTER)	STATE OF MINNESOTA	COUNTY	MUNICIPALITY
LIGHT RAIL	UNINCORPORATED COMMUNITY	UNINCORPORATED	FEDERAL ADJUSTED URBAN AREA (2014)
BLUE LINE		CIVIL TOWNSHIP	CONGRESSIONAL TOWNSHIP
GREEN LINE		SECTION	MILITARY
INFRASTRUCTURE FEATURES		HYDROLOGIC FEATURES	
LONG BRIDGE (200' or Greater Span)	WILDLIFE REFUGUE AREA	WILDLIFE REFUGUE AREA	WILDLIFE MANAGEMENT AREA
MAJOR BRIDGE (20' to 200' Span)	NATIONAL FOREST	NATIONAL FOREST	NATIONAL AND STATE FOREST
MINOR BRIDGE (5' to 20' Span)	STATE FOREST	STATE FOREST	NATIONAL TRAIL
DAM	NATIONAL TRAIL	NATIONAL TRAIL	WILDLIFE REFUGUE AREA
LOCK AND DAM	WILDLIFE REFUGUE AREA	WILDLIFE REFUGUE AREA	WILDLIFE MANAGEMENT AREA
CITY CENTERS		CULTURAL FEATURES	
STATE CAPITAL	STATE HISTORICAL MARKER	STATE HISTORICAL MARKER	HISTORIC DISTRICT
COUNTY SEAT	HISTORIC DISTRICT	HISTORIC DISTRICT	HISTORIC SITE
CITY CENTER	HISTORIC SITE	HISTORIC SITE	MONUMENT
UNINCORPORATED COMMUNITY	MONUMENT	MONUMENT	REGIONAL WATERSHED
PUBLIC SERVICE FEATURES		HYDROLOGIC FEATURES	
MNDOT OFFICE	DRAINAGE DITCH	DRAINAGE DITCH	WETLAND
MNDOT TRUCK STATION	WETLAND	WETLAND	ISLAND OR LAND
HIGHWAY PATROL DISTRICT OFFICE	ISLAND OR LAND	ISLAND OR LAND	REGIONAL WATERSHED
STATE TRAVEL INFORMATION CENTER	REGIONAL WATERSHED	REGIONAL WATERSHED	
REST AREA (Full Service)			
REST AREA (Vault Toilet)			
WAYSIDE (Vault or P/T Toilet)			
PARK AND RIDE LOT			
PORT OF ENTRY			
PUBLIC ACCESS POINT			
MN STATE COLLEGE AND UNIVERSITY SYSTEM (MNSCU)			
UNIVERSITY OF MN SYSTEM			
FAIRGROUNDS			



Population (U.S. Census 2010): 53



To request information from this document in an alternative format, call 651-366-4718 or 1-800-657-3774 (Greater Minnesota); 711 or 1-800-627-3529 (Minnesota Relay). You may also send an e-mail to ADRequest.dot@state.mn.us. (Please request at least one week in advance.)