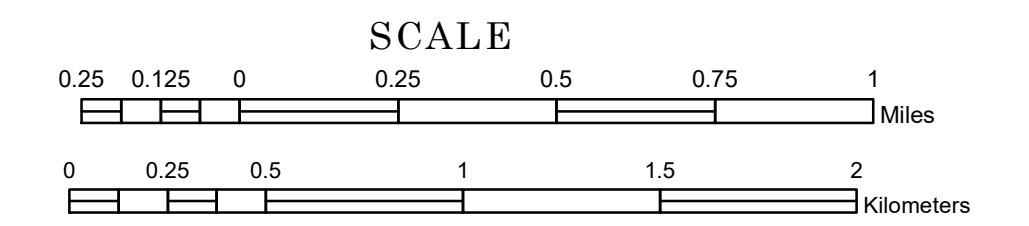


TOWNSHIP OF FANNY

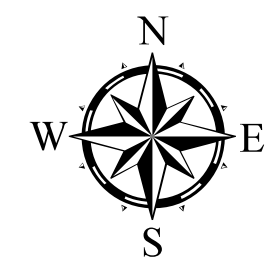
PREPARED BY THE
MINNESOTA DEPARTMENT OF TRANSPORTATION
OFFICE OF TRANSPORTATION SYSTEM MANAGEMENT

IN COOPERATION WITH
U.S. DEPARTMENT OF TRANSPORTATION
FEDERAL HIGHWAY ADMINISTRATION



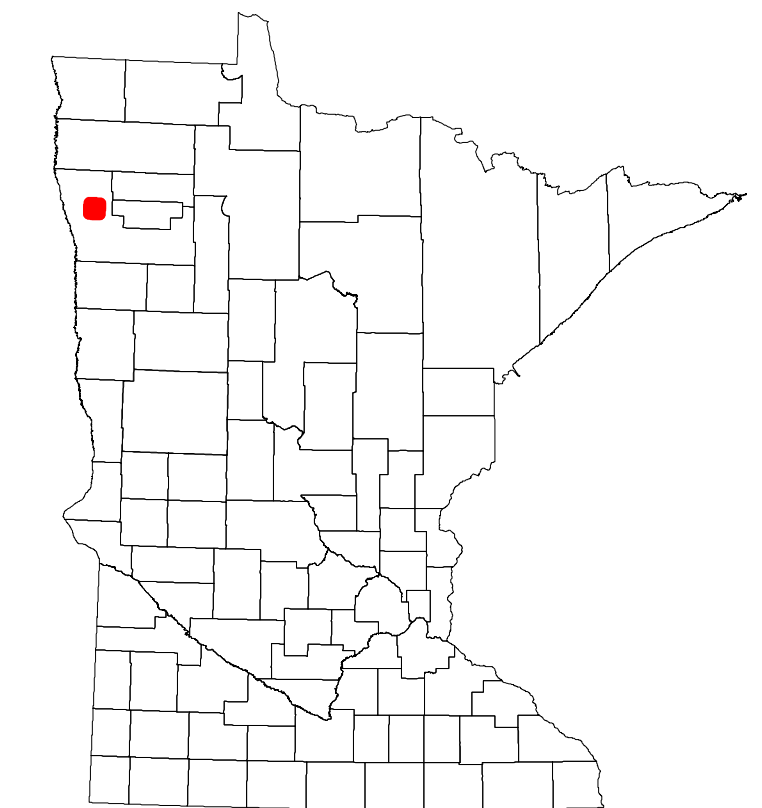
2024

Projection:
Transverse Mercator
NAD 1986
UTM Zone 15

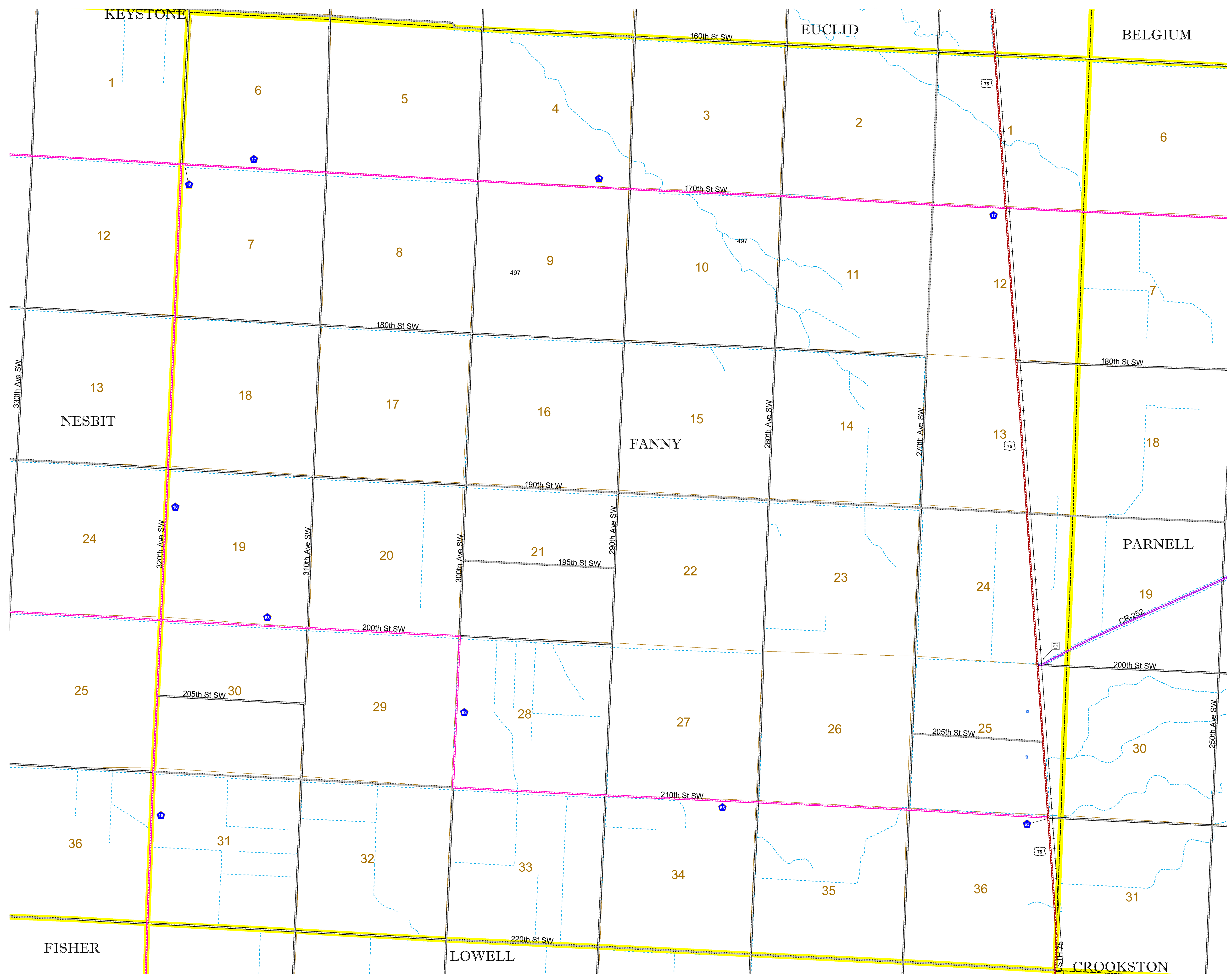


North American Datum
of 1986

ROAD AND ROADWAY FEATURES		AVIATION FEATURES	
INTERSTATE	CONCRETE	COMMERCIAL AIRPORT	GENERAL AIRPORT
US HIGHWAY	BITUMINOUS	NORTHSTAR STATION (COMPUTER)	AIRSTRIP
MN HIGHWAY	GRAVEL	SEAPLANE	AIRPORT RUNWAY
COUNTY STATE AID HIGHWAY	DIRT/UNIMPROVED	OTHER	UNKNOWN
COUNTY ROAD	OTHER	UNKNOWN	
TOWNSHIP ROAD	UNKNOWN		
UNORGANIZED TERRITORY ROAD			
OTHER ROADS			
Municipal	Private	National Monument	State Forest
Nature Service	National Park	National Wildlife	State Game
Military	National Forest	State Park	Preserve
RAILROAD AND RAILWAY FEATURES		BOUNDARY FEATURES	
EMPIRE BUILDER STATION (AMTRAK)	TRIBAL LAND	STATE OF MINNESOTA	COUNTY
NORTHSTAR STATION (COMPUTER)	STATE OF MINNESOTA	MUNICIPALITY	MUNICIPALITY
LIGHT RAIL	UNINCORPORATED	UNINCORPORATED	CIVIL TOWNSHIP
BLUE LINE	UNINCORPORATED	UNINCORPORATED	CONGRESSIONAL TOWNSHIP
GREEN LINE	UNINCORPORATED	UNINCORPORATED	SECTION
INFRASTRUCTURE FEATURES		PUBLIC SERVICE FEATURES	
LONG BRIDGE (200' or Greater Span)	MNDOT OFFICE	STATE CAPITAL	COUNTY SEAT
MAJOR BRIDGE (20' to 200' Span)	HIGHWAY TRUCK STATION	CITY CENTER	CITY CENTER
MINOR BRIDGE (5' to 20' Span)	HIGHWAY PATROL DISTRICT OFFICE	COMMUNITY	COMMUNITY
DAM	STATE TRAVEL INFORMATION CENTER		
LOCK AND DAM	REST AREA (Full Service)		
	REST AREA (Vault Toilet)		
	WAYSIDE (Vault or Pit Toilet)		
	PARK AND RIDE LOT		
	PORT OF ENTRY		
	PUBLIC ACCESS POINT		
	MN STATE COLLEGE AND UNIVERSITY SYSTEM (MNSCU)		
	UNIVERSITY OF MN SYSTEM		
	FAIRGROUNDS		
CULTURAL FEATURES		HYDROLOGIC FEATURES	
STATE HISTORICAL MARKER	STATE HISTORICAL MARKER	RIVER OR STREAM (PERMANENT)	LAKE, POND OR RESERVOIR
HISTORIC DISTRICT	HISTORIC DISTRICT	STREAM (INTERMITTENT)	DRAINAGE DITCH
HISTORIC SITE	HISTORIC SITE	WETLAND	WETLAND
MONUMENT	MONUMENT	ISLAND OR LAND	ISLAND OR LAND
		REGIONAL WATERSHED	REGIONAL WATERSHED



Population (U.S. Census 2010): 103



To request information from this document in an alternative format, call 651-366-4718 or 1-800-657-3774 (Greater Minnesota); 711 or 1-800-627-3529 (Minnesota Relay). You may also send an e-mail to ADARquest.dot@state.mn.us. (Please request at least one week in advance.)