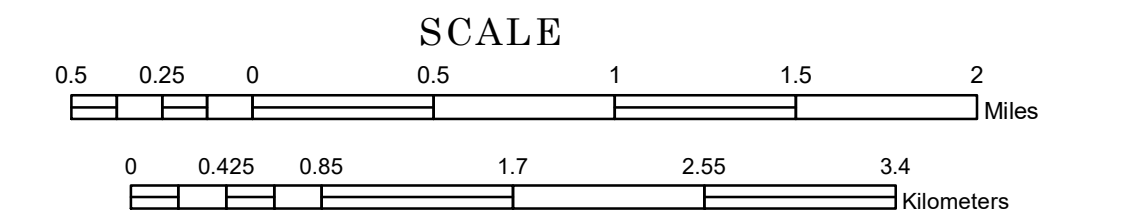


TOWNSHIP OF GROVE PARK-TILDEN

PREPARED BY THE
MINNESOTA DEPARTMENT OF TRANSPORTATION
OFFICE OF TRANSPORTATION SYSTEM MANAGEMENT

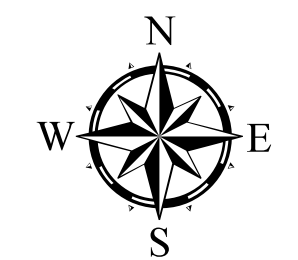
IN COOPERATION WITH
U.S. DEPARTMENT OF TRANSPORTATION
FEDERAL HIGHWAY ADMINISTRATION



1 in = 2,800 ft

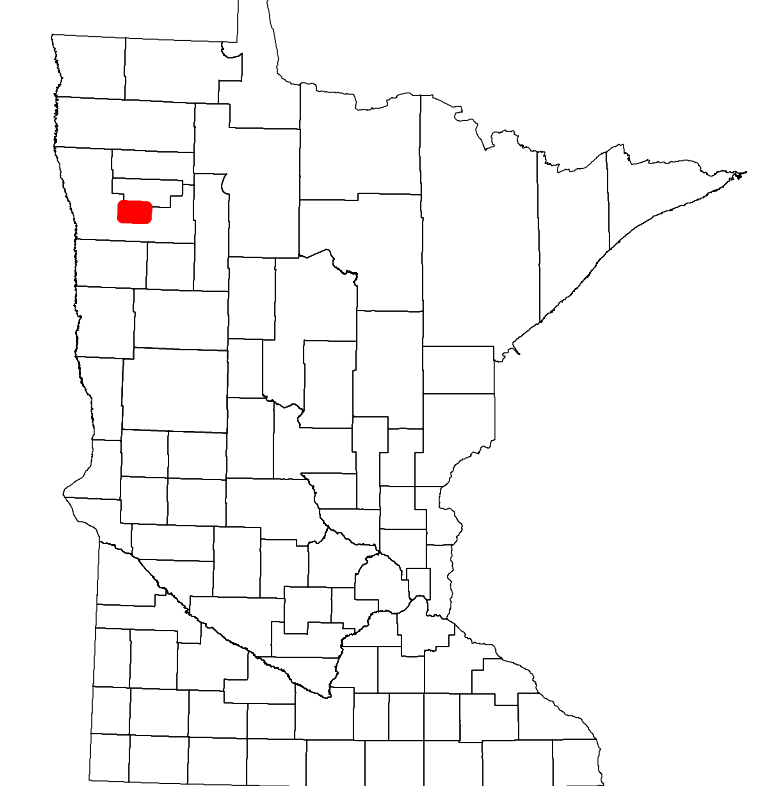
2024

Projection:
Transverse Mercator
NAD 1986
UTM Zone 15

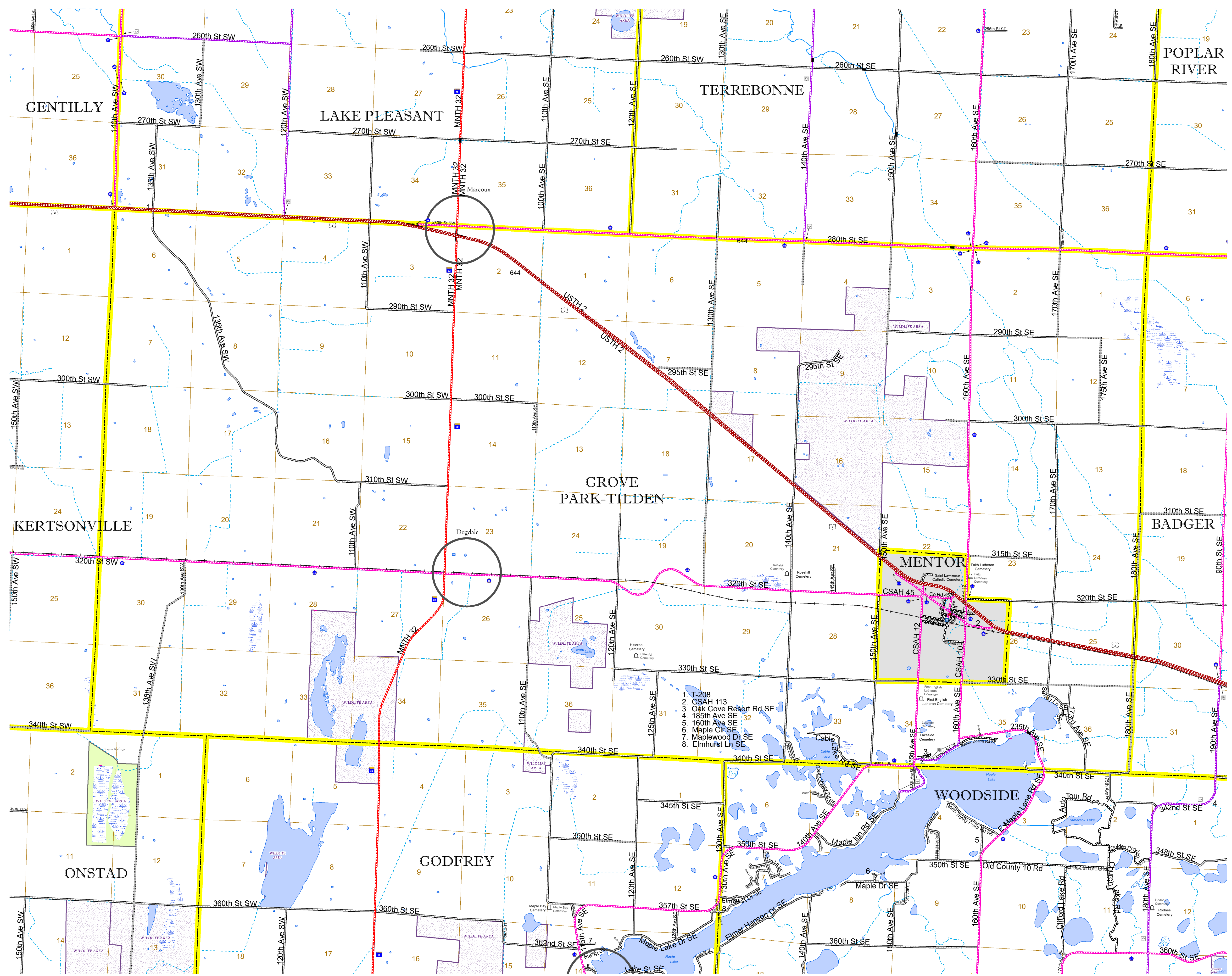


North American Datum
of 1986

ROAD AND ROADWAY FEATURES		BOUNDARY FEATURES	
INTERSTATE	CONCRETE	TRIBAL LAND	STATE OF MINNESOTA
US HIGHWAY	BITUMINOUS	COUNTY	MUNICIPALITY
MN HIGHWAY	GRAVEL	UNORGANIZED TERRITORY	CIVIL TOWNSHIP
COUNTY STATE AID HIGHWAY	DIRT/UNIMPROVED	FEDERAL ADJUSTED URBAN AREA (2014)	CIVIL TOWNSHIP
COUNTY ROAD	OTHER	CONGRESSIONAL TOWNSHIP	SECTION
TOWNSHIP ROAD	UNKNOWN	MILITARY	VOYAGEURS NATIONAL PARK
UNORGANIZED TERRITORY ROAD		UNINCORPORATED COMMUNITY	BOUNDARY WATERS CANOE AREA WILDERNESS
OTHER ROADS			STATE PARK
Municipal	RAMP OR CONNECTOR		REGIONAL PARK
Private	INTERSTATE EXIT		NATIONAL FOREST
National Monument	GREAT RIVER ROAD		NATIONAL AND STATE FOREST
National Wildlife			STATE FOREST
State Park			WILDLIFE REFUGUE AREA
Preserve			WILDLIFE MANAGEMENT AREA
			HYDROLOGIC FEATURES
			RIVER OR STREAM (PERENNIAL)
			LAKE, POND OR RESERVOIR
			STREAM (INTERMITTENT)
			DRAINAGE DITCH
			WETLAND
			ISLAND OR LAND
			REGIONAL WATERSHED



Population (U.S. Census 2010): 282



To request information from this document in an alternative format, call 651-366-4718 or 1-800-657-3774 (Greater Minnesota); 711 or 1-800-627-3529 (Minnesota Relay). You may also send an e-mail to ADarequest.dot@state.mn.us. (Please request at least one week in advance.)