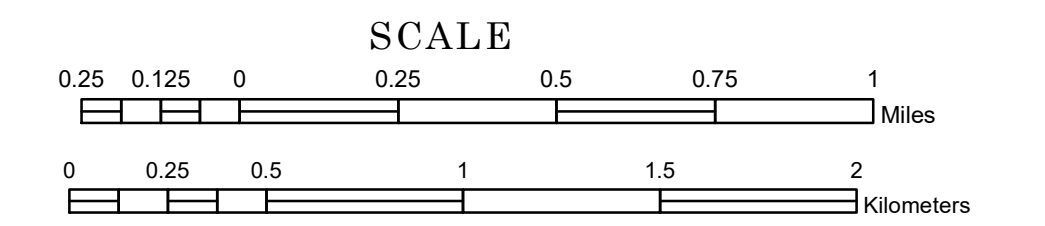


TOWNSHIP OF JOHNSON

PREPARED BY THE
MINNESOTA DEPARTMENT OF TRANSPORTATION
OFFICE OF TRANSPORTATION SYSTEM MANAGEMENT

IN COOPERATION WITH
U.S. DEPARTMENT OF TRANSPORTATION
FEDERAL HIGHWAY ADMINISTRATION



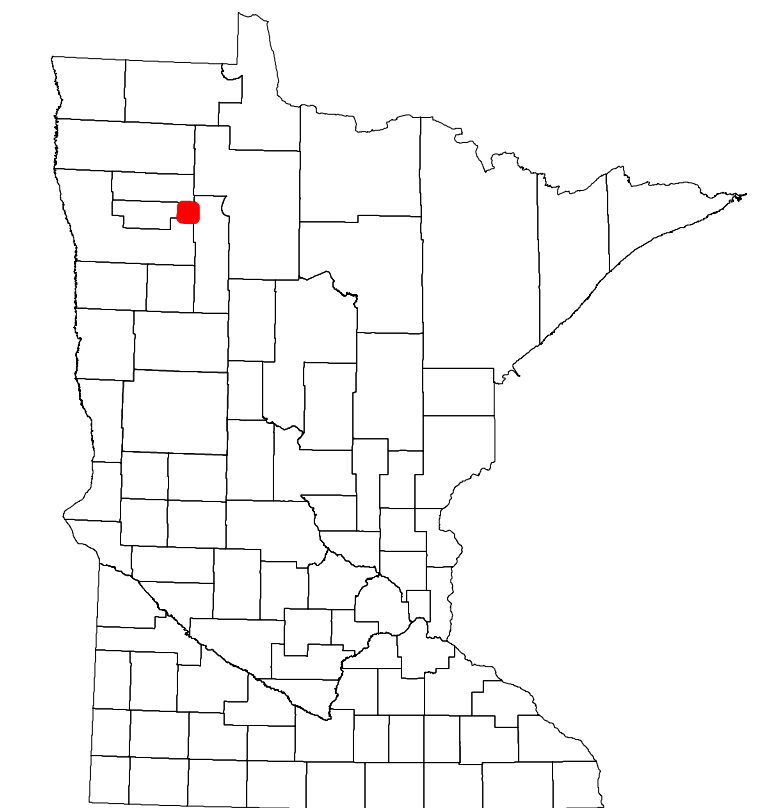
1 in = 1,600 ft
2024

Projection:
Transverse Mercator
NAD 1986
UTM Zone 15

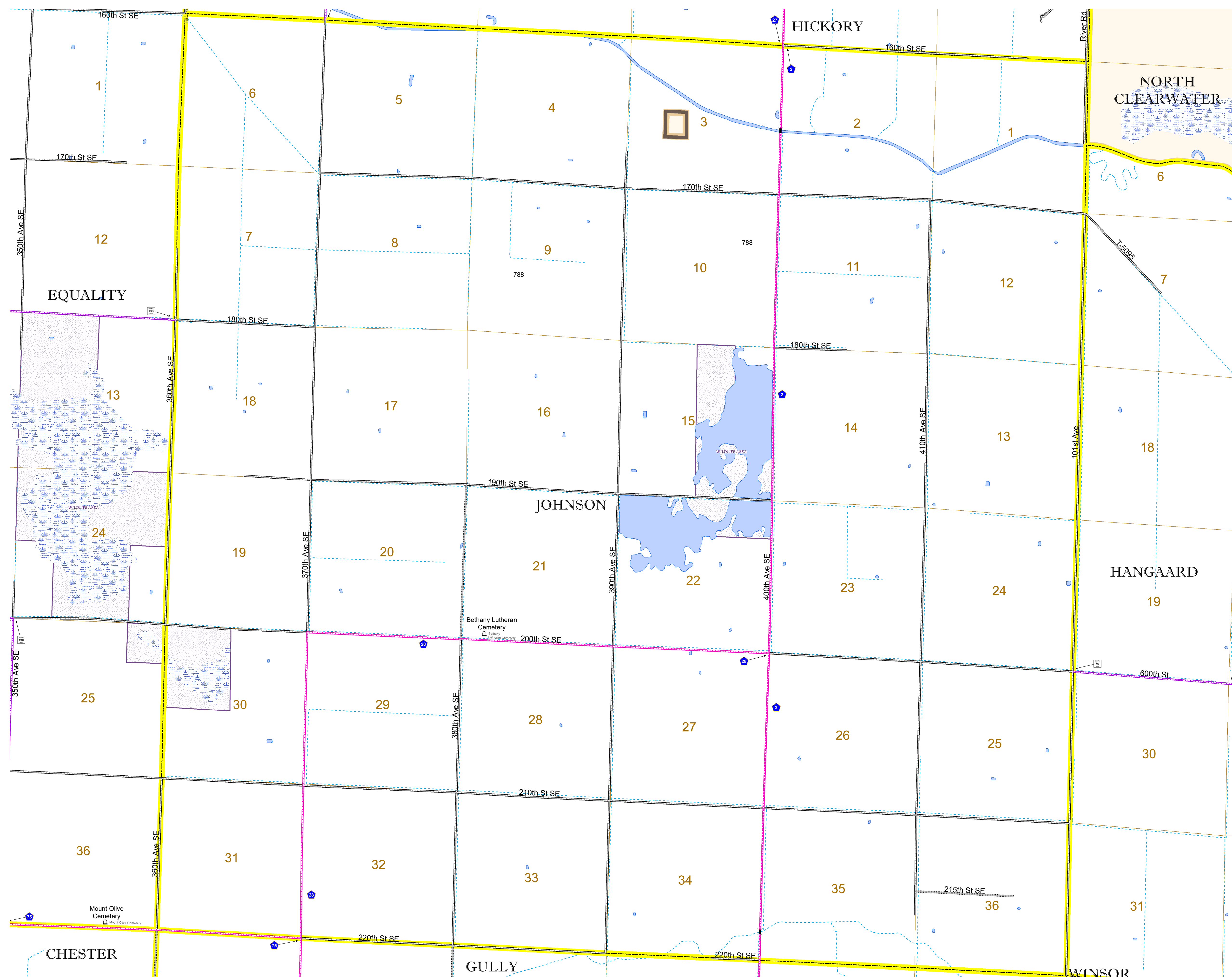


North American Datum
of 1986

ROAD AND ROADWAY FEATURES		AVIATION FEATURES	
INTERSTATE	CONCRETE	COMMERCIAL AIRPORT	GENERAL AIRPORT
US HIGHWAY	BITUMINOUS	AIRSTRIP	SEAPLANE
MN HIGHWAY	GRAVEL	AIRPORT RUNWAY	BOUNDARY FEATURES
COUNTY STATE AID HIGHWAY	DIRT/UNIMPROVED	TRIAL LAND	STATE OF MINNESOTA
COUNTY ROAD	OTHER	COUNTY	MUNICIPALITY
TOWNSHIP ROAD	UNKNOWN	MUNICIPALITY	UNINCORPORATED TOWNSHIP
UNORGANIZED TERRITORY ROAD		UNINCORPORATED TOWNSHIP	CIVIL TOWNSHIP
OTHER ROADS		CIVIL TOWNSHIP	CONGRESSIONAL TOWNSHIP
Municipal		CONGRESSIONAL TOWNSHIP	SECTION
Private		SECTION	MILITARY
National Monument		MILITARY	VOYAGEURS NATIONAL PARK
National Park		VOYAGEURS NATIONAL PARK	BOUNDARY WATERS CANOE AREA WILDERNESS
National Wildlife Refuge		BOUNDARY WATERS CANOE AREA WILDERNESS	STATE PARK
State Park		STATE PARK	REGIONAL PARK
Preserve		REGIONAL PARK	NATIONAL FOREST
		NATIONAL FOREST	NATIONAL AND STATE FOREST
		NATIONAL AND STATE FOREST	STATE FOREST
		STATE FOREST	WILDLIFE REFUGUE AREA
		WILDLIFE REFUGUE AREA	WILDLIFE MANAGEMENT AREA
		WILDLIFE MANAGEMENT AREA	HYDROLOGIC FEATURES
		HYDROLOGIC FEATURES	RIVER OR STREAM (PERENNIAL)
		RIVER OR STREAM (PERENNIAL)	LAKE, POND OR RESERVOIR
		LAKE, POND OR RESERVOIR	STREAM (INTERMITTENT)
		STREAM (INTERMITTENT)	DRAINAGE DITCH
		DRAINAGE DITCH	WETLAND
		WETLAND	ISLAND OR LAND
		ISLAND OR LAND	REGIONAL WATERSHED
		REGIONAL WATERSHED	



Population (U.S. Census 2010): 51



To request information from this document in an alternative format, call 651-366-4718 or 1-800-657-3774 (Greater Minnesota); 711 or 1-800-627-3529 (Minnesota Relay). You may also send an e-mail to ADArequest.dot@state.mn.us. (Please request at least one week in advance.)