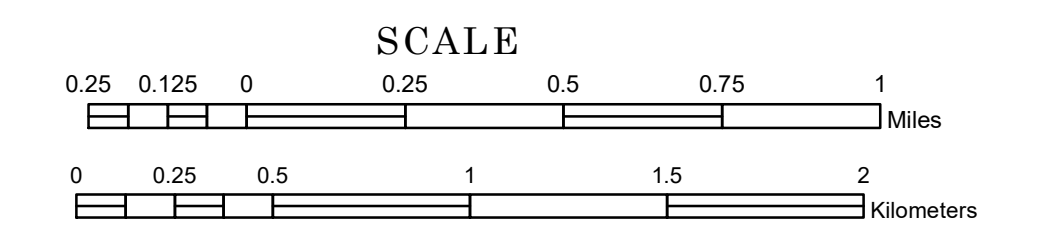


# TOWNSHIP OF ONSTAD

PREPARED BY THE  
MINNESOTA DEPARTMENT OF TRANSPORTATION  
OFFICE OF TRANSPORTATION SYSTEM MANAGEMENT

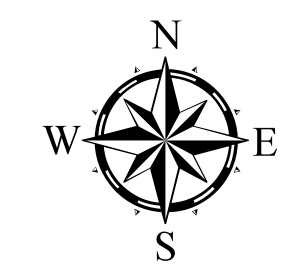
IN COOPERATION WITH  
U.S. DEPARTMENT OF TRANSPORTATION  
FEDERAL HIGHWAY ADMINISTRATION



1 in = 1,600 ft

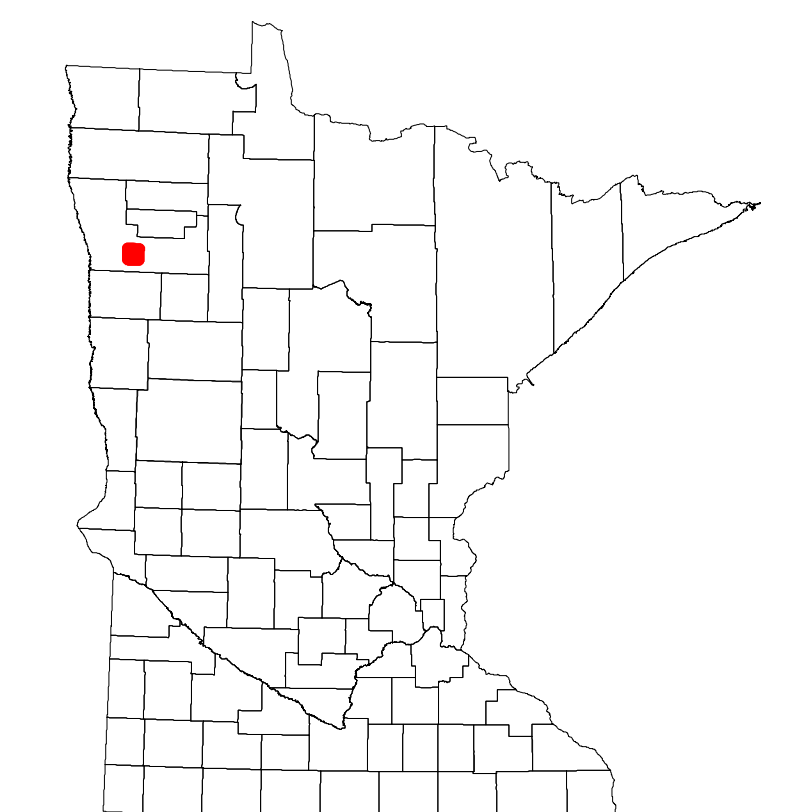
2024

Projection:  
Transverse Mercator  
NAD 1986  
UTM Zone 15

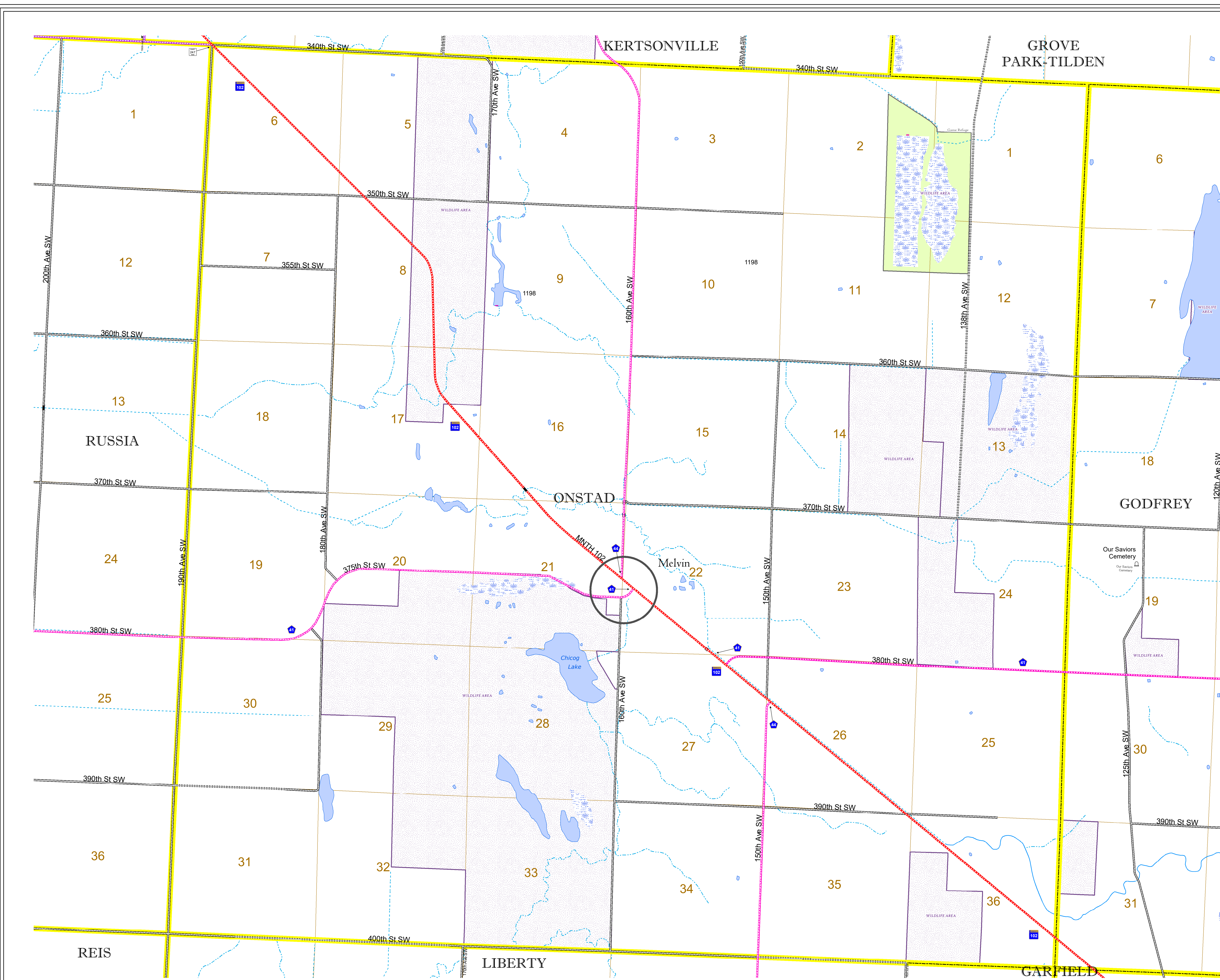


North American Datum  
of 1986

ROAD AND ROADWAY FEATURES		BOUNDARY FEATURES	
INTERSTATE	CONCRETE	TRIBAL LAND	STATE OF MINNESOTA
US HIGHWAY	BITUMINOUS	COUNTY	MUNICIPALITY
MN HIGHWAY	GRAVEL	UNINCORPORATED TOWNSHIP	CIVIL TOWNSHIP
COUNTY STATE AID HIGHWAY	DIRT/UNIMPROVED	FEDERAL ADJUSTED URBAN AREA (2014)	CIVIL TOWNSHIP
COUNTY ROAD	OTHER	UNINCORPORATED TOWNSHIP	CIVIL TOWNSHIP
TOWNSHIP ROAD	UNKNOWN	UNINCORPORATED TOWNSHIP	CIVIL TOWNSHIP
UNORGANIZED TERRITORY ROAD	UNKNOWN	UNINCORPORATED TOWNSHIP	CIVIL TOWNSHIP
OTHER ROADS	RAMP OR CONNECTOR	UNINCORPORATED TOWNSHIP	CIVIL TOWNSHIP
Municipal	Private	UNINCORPORATED TOWNSHIP	CIVIL TOWNSHIP
National Monument	State Forest	UNINCORPORATED TOWNSHIP	CIVIL TOWNSHIP
National Wildlife Refuge	State Game	UNINCORPORATED TOWNSHIP	CIVIL TOWNSHIP
National Forest	State Park	UNINCORPORATED TOWNSHIP	CIVIL TOWNSHIP
Preserve		UNINCORPORATED TOWNSHIP	CIVIL TOWNSHIP
RAILROAD AND RAILWAY FEATURES		AVIATION FEATURES	
EMPIRE BUILDER STATION (AMTRAK)	COMMERCIAL AIRPORT	GENERAL AIRPORT	
NORTHSTAR STATION (COMPUTER)	AIRSTRIP	AIRSTRIP	
LIGHT RAIL	SEAPLANE	SEAPLANE	
BLUE LINE	AIRPORT RUNWAY	AIRPORT RUNWAY	
GREEN LINE			
INFRASTRUCTURE FEATURES		BOUNDARY FEATURES	
LONG BRIDGE (200' OR GREATER SPAN)	STATE OF MINNESOTA	COUNTY	MUNICIPALITY
MAJOR BRIDGE (20' TO 200' SPAN)	UNINCORPORATED TOWNSHIP	CIVIL TOWNSHIP	CIVIL TOWNSHIP
MINOR BRIDGE (5' TO 20' SPAN)	UNINCORPORATED TOWNSHIP	CIVIL TOWNSHIP	CIVIL TOWNSHIP
DAM	UNINCORPORATED TOWNSHIP	CIVIL TOWNSHIP	CIVIL TOWNSHIP
LOCK-AND-DAM	UNINCORPORATED TOWNSHIP	CIVIL TOWNSHIP	CIVIL TOWNSHIP
CITY CENTERS		BOUNDARY FEATURES	
STATE CAPITAL	COUNTY SEAT	CITY CENTER	UNINCORPORATED COMMUNITY
PUBLIC SERVICE FEATURES		BOUNDARY FEATURES	
MNDOT OFFICE	VOYAGEURS NATIONAL PARK	BOUNDARY WATERS CANOE AREA WILDERNESS	STATE PARK
MNDOT TRUCK STATION	REGIONAL PARK	NATIONAL FOREST	NATIONAL AND STATE FOREST
HIGHWAY PATROL DISTRICT OFFICE	STATE FOREST	NATIONAL TRAIL	WILDLIFE REFUGUE AREA
STATE TRAVEL INFORMATION CENTER	WILDLIFE REFUGUE AREA	WILDLIFE MANAGEMENT AREA	HYDROLOGIC FEATURES
REST AREA (Full Service)	WILDLIFE MANAGEMENT AREA	WILDLIFE MANAGEMENT AREA	HYDROLOGIC FEATURES
REST AREA (Vault Toilet)	WILDLIFE MANAGEMENT AREA	WILDLIFE MANAGEMENT AREA	HYDROLOGIC FEATURES
WAYSIDE (Vault or Pit Toilet)	WILDLIFE MANAGEMENT AREA	WILDLIFE MANAGEMENT AREA	HYDROLOGIC FEATURES
PARK AND RIDE LOT	WILDLIFE MANAGEMENT AREA	WILDLIFE MANAGEMENT AREA	HYDROLOGIC FEATURES
PORT OF ENTRY	WILDLIFE MANAGEMENT AREA	WILDLIFE MANAGEMENT AREA	HYDROLOGIC FEATURES
PUBLIC ACCESS POINT	WILDLIFE MANAGEMENT AREA	WILDLIFE MANAGEMENT AREA	HYDROLOGIC FEATURES
MN STATE COLLEGE AND UNIVERSITY SYSTEM (MNSCU)	WILDLIFE MANAGEMENT AREA	WILDLIFE MANAGEMENT AREA	HYDROLOGIC FEATURES
UNIVERSITY OF MN SYSTEM	WILDLIFE MANAGEMENT AREA	WILDLIFE MANAGEMENT AREA	HYDROLOGIC FEATURES
FAIRGROUNDS	WILDLIFE MANAGEMENT AREA	WILDLIFE MANAGEMENT AREA	HYDROLOGIC FEATURES
CULTURAL FEATURES		BOUNDARY FEATURES	
STATE HISTORICAL MARKER	DRAINAGE DITCH	WETLAND	ISLAND OR LAND
HISTORIC DISTRICT	WETLAND	ISLAND OR LAND	REGIONAL WATERSHED
HISTORIC SITE	WETLAND	ISLAND OR LAND	REGIONAL WATERSHED
MONUMENT	WETLAND	ISLAND OR LAND	REGIONAL WATERSHED



Population (U.S. Census 2010): 71



To request information from this document in an alternative format, call 651-366-4718 or 1-800-657-3774 (Greater Minnesota); 711 or 1-800-627-3529 (Minnesota Relay). You may also send an e-mail to ADAREquest.dot@state.mn.us. (Please request at least one week in advance.)