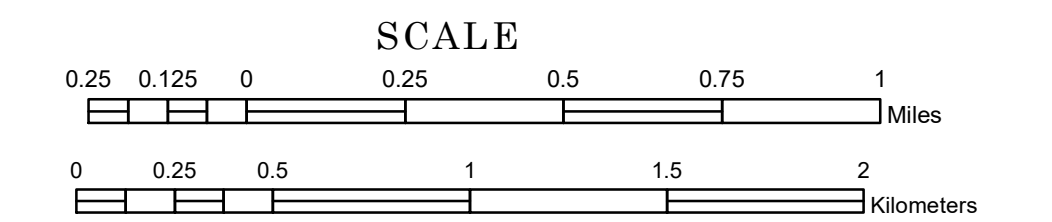


TOWNSHIP OF SANDSVILLE

PREPARED BY THE
MINNESOTA DEPARTMENT OF TRANSPORTATION
OFFICE OF TRANSPORTATION SYSTEM MANAGEMENT

IN COOPERATION WITH
U.S. DEPARTMENT OF TRANSPORTATION
FEDERAL HIGHWAY ADMINISTRATION



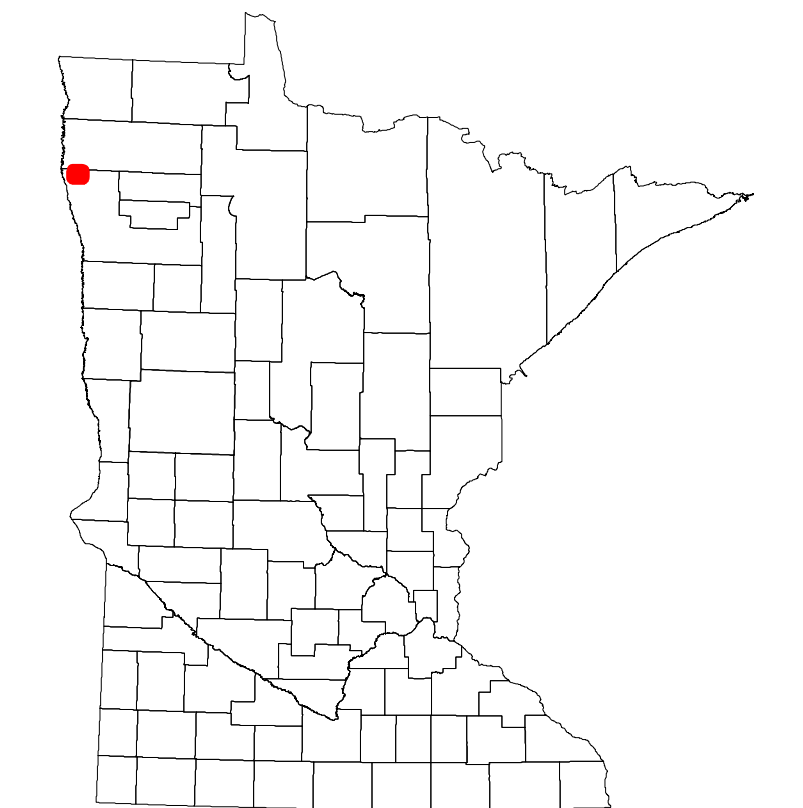
1 in = 1,600 ft
2024

Projection:
Transverse Mercator
NAD 1986
UTM Zone 15

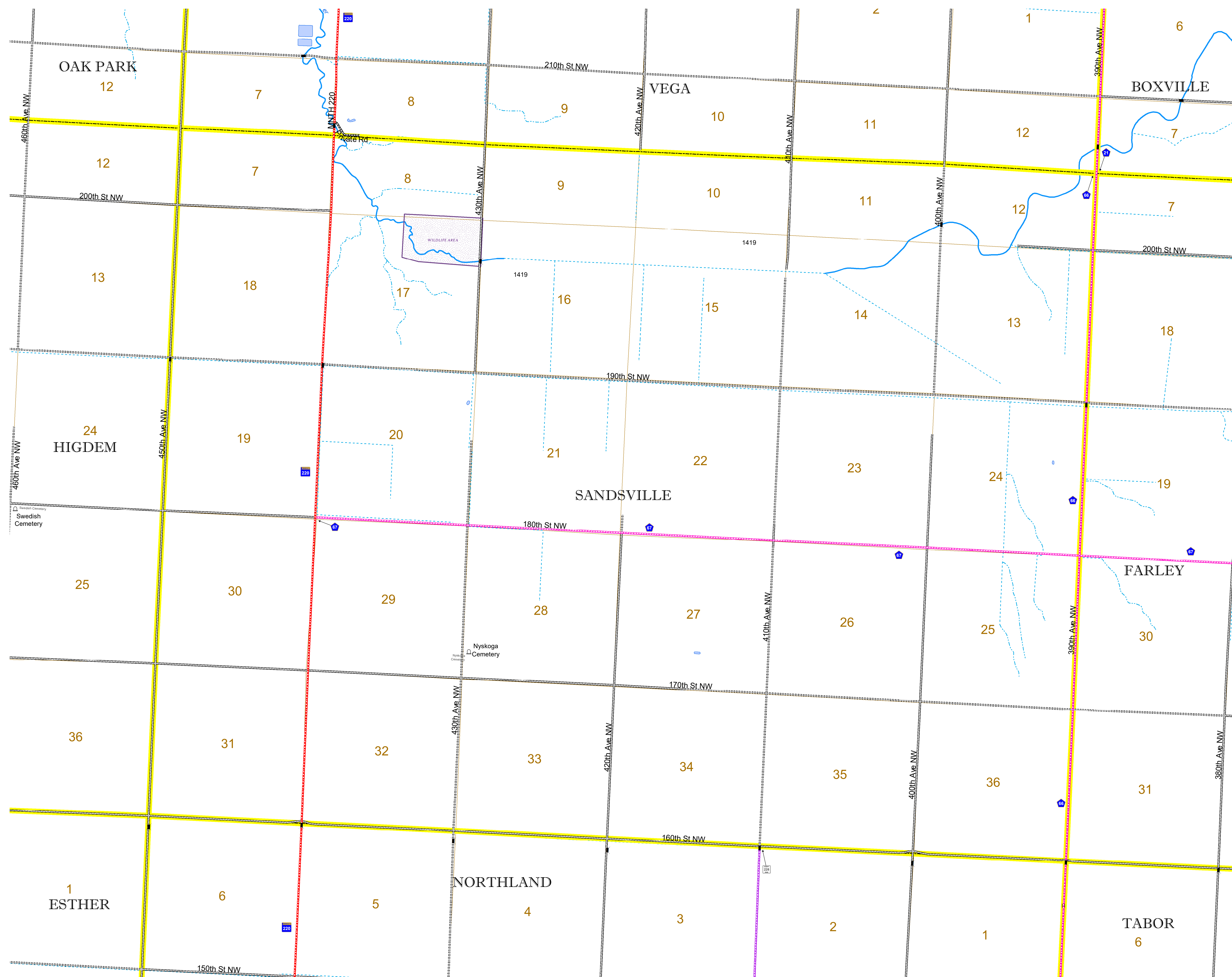


North American Datum
of 1986

ROAD AND ROADWAY FEATURES		AVIATION FEATURES	
INTERSTATE		CONCRETE	
US HIGHWAY		BITUMINOUS	
MN HIGHWAY		GRAVEL	
COUNTY STATE AID HIGHWAY		DIRT/UNIMPROVED	
COUNTY ROAD		OTHER	
TOWNSHIP ROAD		UNKNOWN	
UNORGANIZED TERRITORY ROAD		RAMP OR CONNECTOR	
OTHER ROADS		INTERSTATE EXIT	
Municipal		GENERAL AIRPORT	
Private		AIRSTRIP	
National Monument		SEAPLANE	
National Park		AIRPORT RUNWAY	
National Wildlife Refuge			
State Park			
Preserve			
RAILROAD AND RAILWAY FEATURES		BOUNDARY FEATURES	
EMPIRE BUILDER STATION (AMTRAK)		TRIBAL LAND	
NORTHSTAR STATION (COMPUTER)		STATE OF MINNESOTA	
LIGHT RAIL		COUNTY	
BLUE LINE		MUNICIPALITY	
GREEN LINE		UNORGANIZED TERRITORY	
		FEDERAL ADJUSTED URBAN AREA (2014)	
		CIVIL TOWNSHIP	
		CONGRESSIONAL TOWNSHIP	
		SECTION	
		MILITARY	
		VOYAGEURS NATIONAL PARK	
		BOUNDARY WATERS CANOE AREA WILDERNESS	
		STATE PARK	
		REGIONAL PARK	
		NATIONAL FOREST	
		NATIONAL AND STATE FOREST	
		STATE FOREST	
		WILDLIFE REFUGE AREA	
		WILDLIFE MANAGEMENT AREA	
		HYDROLOGIC FEATURES	
		RIVER OR STREAM (PERMANENT)	
		LAKE, POND OR RESERVOIR	
		STREAM (INTERMITTENT)	
		DRAINAGE DITCH	
		WETLAND	
		ISLAND OR LAND	
		REGIONAL WATERSHED	



Population (U.S. Census 2010): 67



To request information from this document in an alternative format, call 651-366-4718 or 1-800-657-3774 (Greater Minnesota); 711 or 1-800-627-3529 (Minnesota Relay). You may also send an e-mail to ADRequest.dot@state.mn.us. (Please request at least one week in advance.)