

TOWNSHIP OF TABOR

PREPARED BY THE
MINNESOTA DEPARTMENT OF TRANSPORTATION
OFFICE OF TRANSPORTATION SYSTEM MANAGEMENT

IN COOPERATION WITH
U.S. DEPARTMENT OF TRANSPORTATION
FEDERAL HIGHWAY ADMINISTRATION



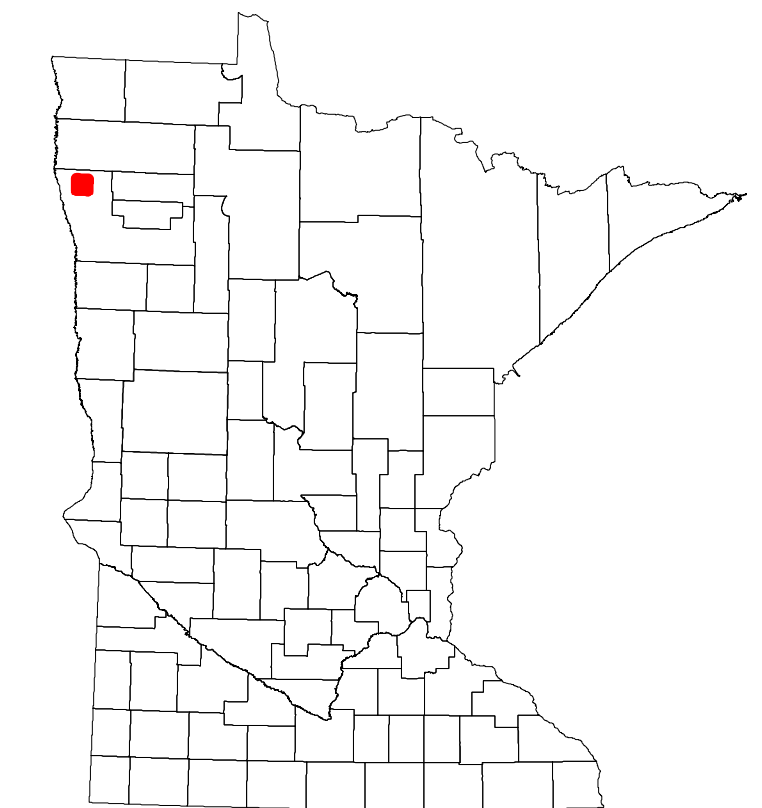
2024

Projection:
Transverse Mercator
NAD 1986
UTM Zone 15

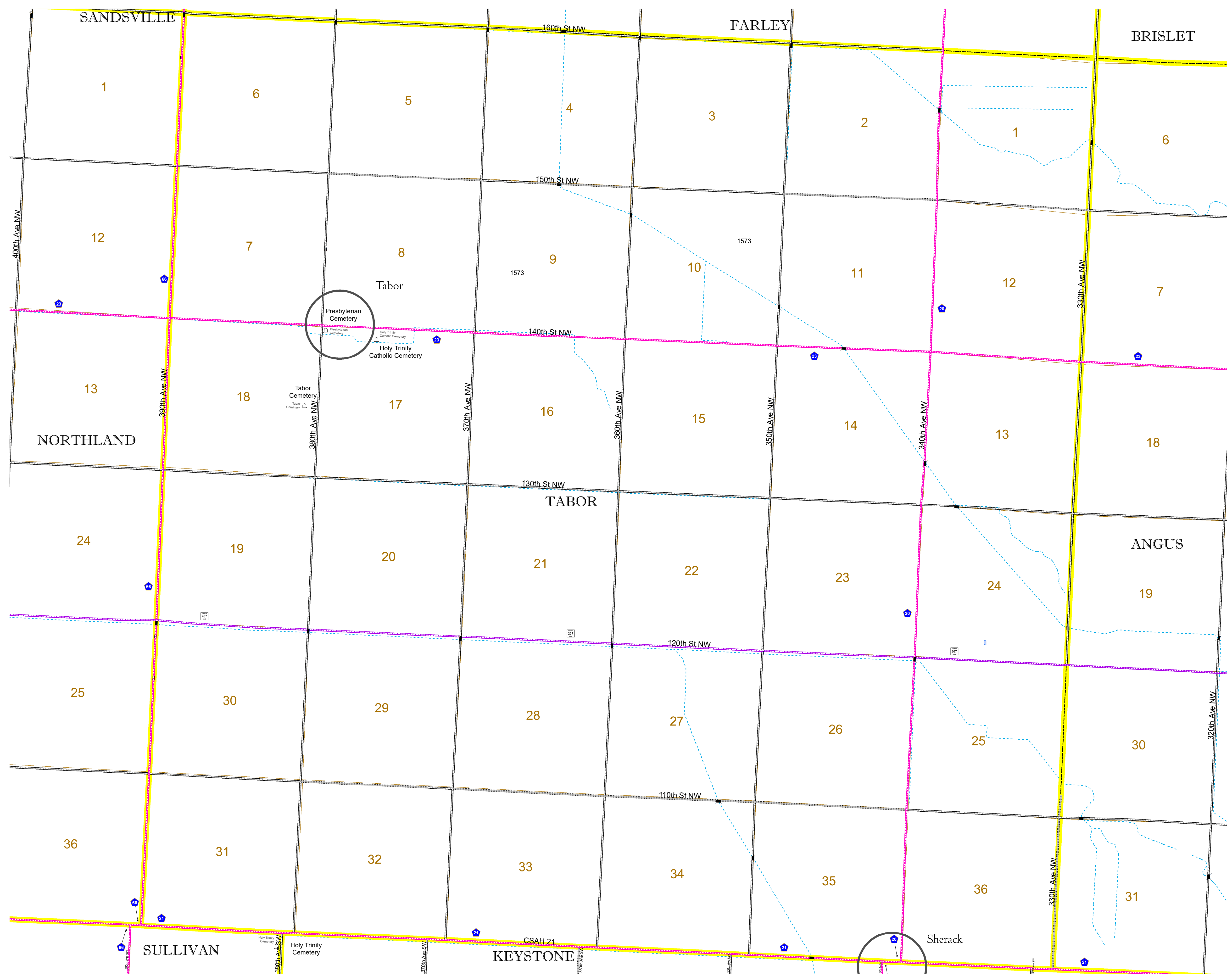


North American Datum
of 1986

ROAD AND ROADWAY FEATURES		AVIATION FEATURES	
INTERSTATE	CONCRETE	COMMERCIAL AIRPORT	TRIBAL LAND
US HIGHWAY	BITUMINOUS	GENERAL AIRPORT	STATE OF MINNESOTA
MN HIGHWAY	GRAVEL	AIRSTRIP	COUNTY
COUNTY STATE AID HIGHWAY	DIRT/UNIMPROVED	SEAPLANE	MUNICIPALITY
COUNTY ROAD	OTHER	AIRPORT RUNWAY	UNORGANIZED TERRITORY
TOWNSHIP ROAD	UNKNOWN		FEDERAL ADJUSTED URBAN AREA (2014)
UNORGANIZED TERRITORY ROAD			CIVIL TOWNSHIP
OTHER ROADS			CONGRESSIONAL TOWNSHIP
Municipal			SECTION
Private			MILITARY
National Monument			VOYAGEURS NATIONAL PARK
National Park			BOUNDARY WATERS CANOE AREA WILDERNESS
National Wildlife Refuge			STATE PARK
State Park			REGIONAL PARK
Preserve			NATIONAL FOREST
			NATIONAL AND STATE FOREST
			STATE FOREST
			WILDLIFE REFUGUE AREA
			WILDLIFE MANAGEMENT AREA
			HYDROLOGIC FEATURES
			RIVER OR STREAM (PERMANENT)
			LAKE, POND OR RESERVOIR
			STREAM (INTERMITTENT)
			DRAINAGE DITCH
			WETLAND
			ISLAND OR LAND
			REGIONAL WATERSHED



Population (U.S. Census 2010): 113



To request information from this document in an alternative format, call 651-366-4718 or 1-800-657-3774 (Greater Minnesota); 711 or 1-800-627-3529 (Minnesota Relay). You may also send an e-mail to ADArequest.dot@state.mn.us. (Please request at least one week in advance.)