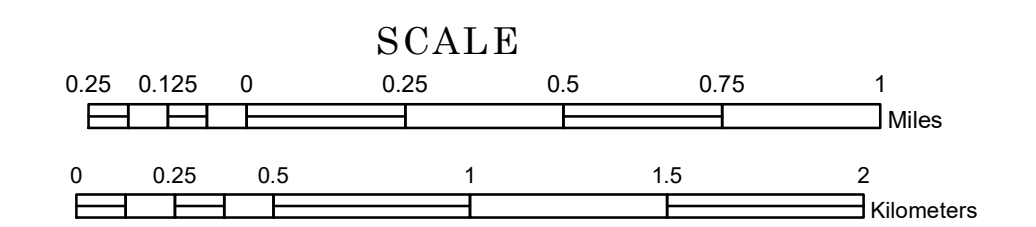


TOWNSHIP OF WINGER

PREPARED BY THE
MINNESOTA DEPARTMENT OF TRANSPORTATION
OFFICE OF TRANSPORTATION SYSTEM MANAGEMENT

IN COOPERATION WITH
U.S. DEPARTMENT OF TRANSPORTATION
FEDERAL HIGHWAY ADMINISTRATION



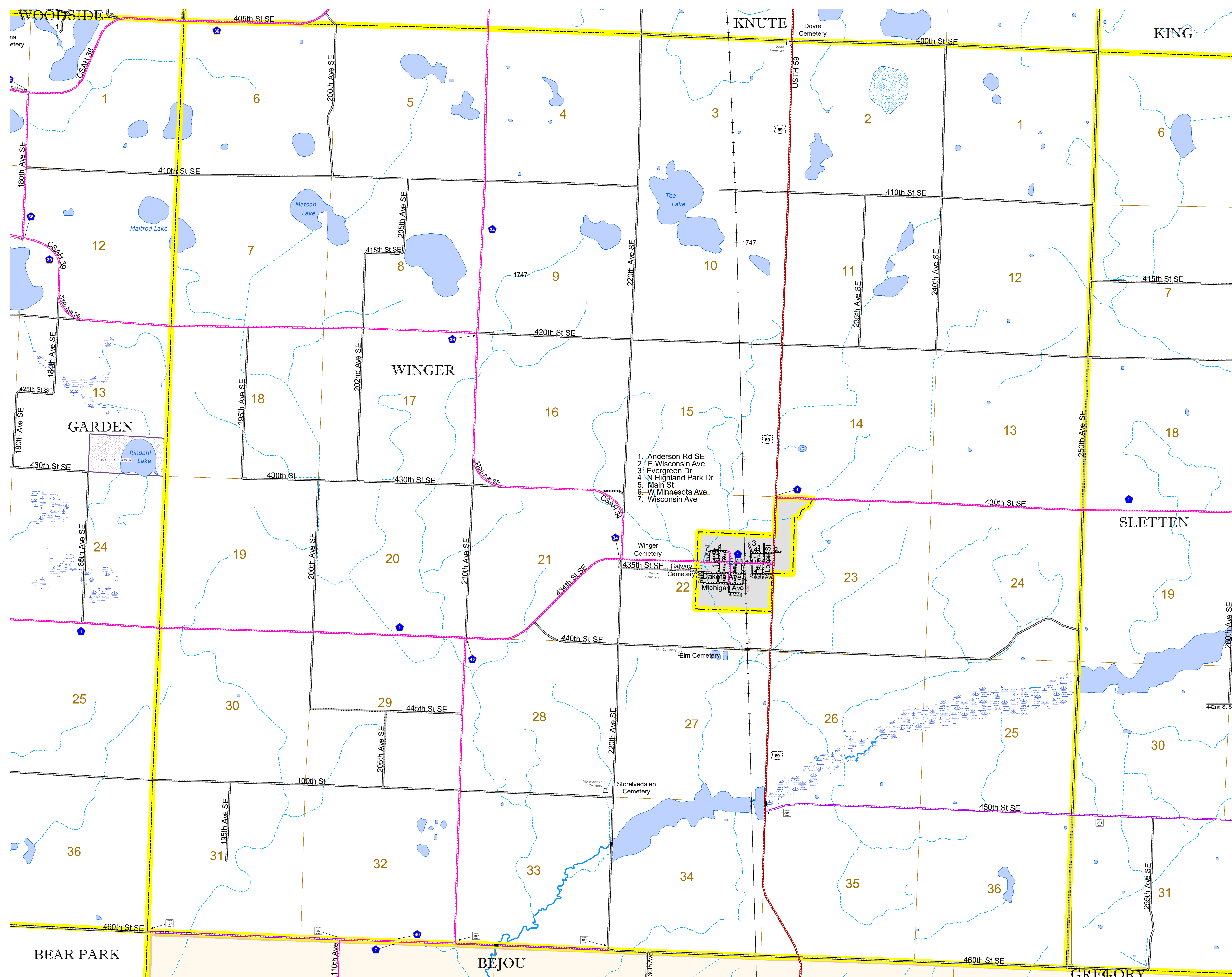
1 in = 1,600 ft

2024

Projection:
Transverse Mercator
NAD 1986
UTM Zone 15

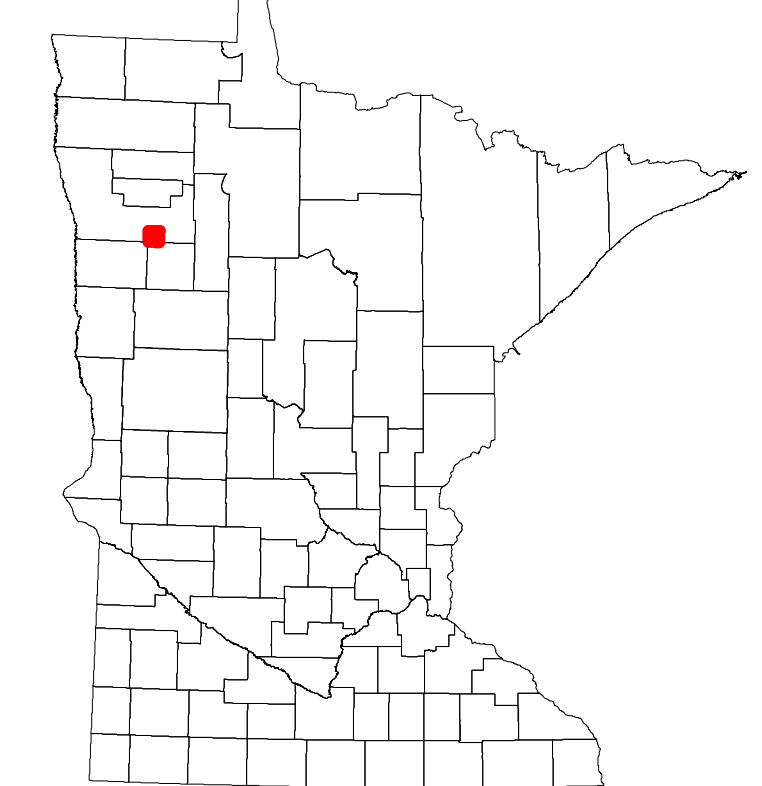


North American Datum
of 1986



1. Anderson Rd SE
2. E Wisconsin Ave
3. Evergreen Dr
4. N Highland Park Dr
5. Main St
6. W Minnesota Ave
7. Wisconsin Ave

ROAD AND ROADWAY FEATURES		AVIATION FEATURES	
INTERSTATE	CONCRETE	COMMERCIAL AIRPORT	
US HIGHWAY	BITUMINOUS	GENERAL AIRPORT	
MN HIGHWAY	GRAVEL	AIRSTRIP	
COUNTY STATE AID HIGHWAY	DIRT/UNIMPROVED	SEAPLANE	
COUNTY ROAD	OTHER	AIRPORT RUNWAY	
TOWNSHIP ROAD	UNKNOWN		
UNORGANIZED TERRITORY ROAD			
OTHER ROADS			
Municipal	RAMP OR CONNECTOR		
Private	INTERSTATE EXIT		
National Monument	GREAT RIVER ROAD		
National Park			
National Wildlife Refuge			
State Park			
Preserve			
RAILROAD AND RAILWAY FEATURES		BOUNDARY FEATURES	
EMPIRE BUILDER STATION (AMTRAK)	TRIBAL LAND	STATE OF MINNESOTA	
NORTHSTAR STATION (COMUTER)	COUNTY	MUNICIPALITY	
		UNINCORPORATED TOWNSHIP	
		FEDERAL ADJUSTED URBAN AREA (2014)	
		CIVIL TOWNSHIP	
		CONGRESSIONAL TOWNSHIP	
		SECTION	
		MILITARY	
		VOYAGEURS NATIONAL PARK	
		BOUNDARY WATERS CANOE AREA WILDERNESS	
		STATE PARK	
		REGIONAL PARK	
		NATIONAL FOREST	
		NATIONAL AND STATE FOREST	
		STATE FOREST	
		NATIONAL TRAIL	
		WILDLIFE REFUGE AREA	
		WILDLIFE MANAGEMENT AREA	
INFRASTRUCTURE FEATURES		HYDROLOGIC FEATURES	
LONG BRIDGE (200' OR GREATER SPAN)		RIVER OR STREAM (PERMANENT)	
MAJOR BRIDGE (20' TO 200' SPAN)		LAKE, POND OR RESERVOIR	
MINOR BRIDGE (5' TO 20' SPAN)		STREAM (INTERMITTENT)	
DAM		DRAINAGE DITCH	
LOCK AND DAM		WETLAND	
		ISLAND OR LAND	
		REGIONAL WATERSHED	
CITY CENTERS			
STATE CAPITAL			
COUNTY SEAT			
CITY CENTER			
UNINCORPORATED COMMUNITY			
PUBLIC SERVICE FEATURES			
MNDOT OFFICE			
MNDOT TRUCK STATION			
HIGHWAY PATROL DISTRICT OFFICE			
STATE TRAVEL INFORMATION CENTER			
REST AREA (FULL SERVICE)			
REST AREA (VAULT TOILET)			
WAYSIDE (VAULT OR PITY TOILET)			
PARK AND RIDE LOT			
PORT OF ENTRY			
PUBLIC ACCESS POINT			
MN STATE COLLEGE AND UNIVERSITY SYSTEM (MNSCU)			
UNIVERSITY OF MN SYSTEM			
FAIRGROUNDS			
CULTURAL FEATURES			
STATE HISTORICAL MARKER			
HISTORIC DISTRICT			
HISTORIC SITE			
MONUMENT			



Population (U.S. Census 2010): 206

To request information from this document in an alternative format, call 651-366-4718 or 1-800-657-3774 (Greater Minnesota); 711 or 1-800-627-3529 (Minnesota Relay). You may also send an e-mail to ADArequest.dot@state.mn.us. (Please request at least one week in advance.)