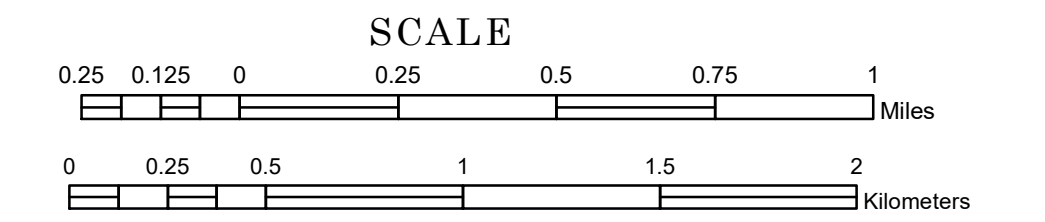


# TOWNSHIP OF GILCHRIST

PREPARED BY THE  
MINNESOTA DEPARTMENT OF TRANSPORTATION  
OFFICE OF TRANSPORTATION SYSTEM MANAGEMENT

IN COOPERATION WITH  
U.S. DEPARTMENT OF TRANSPORTATION  
FEDERAL HIGHWAY ADMINISTRATION



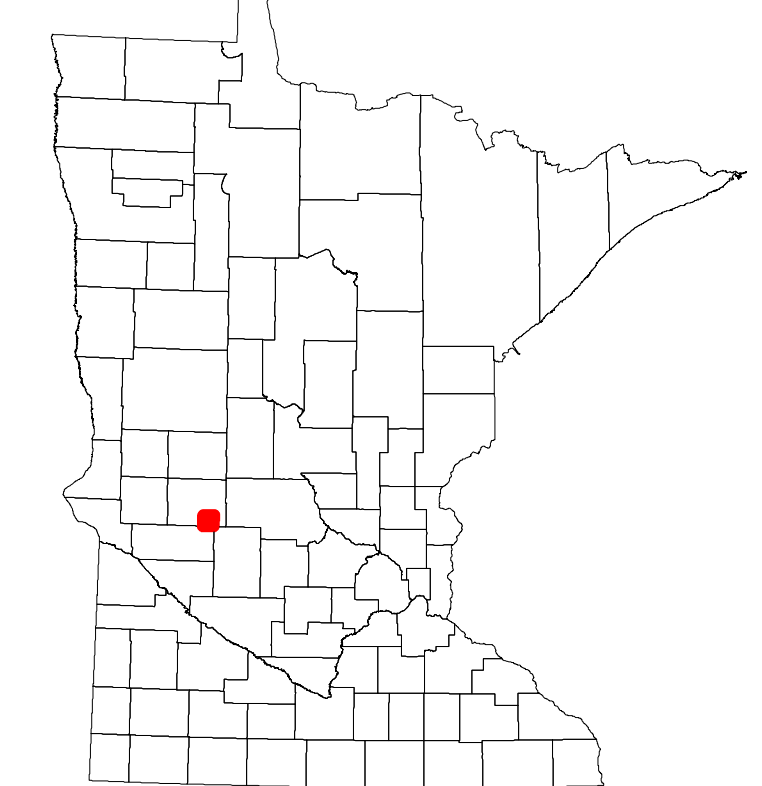
2023

Projection:  
Transverse Mercator  
NAD 1986  
UTM Zone 15

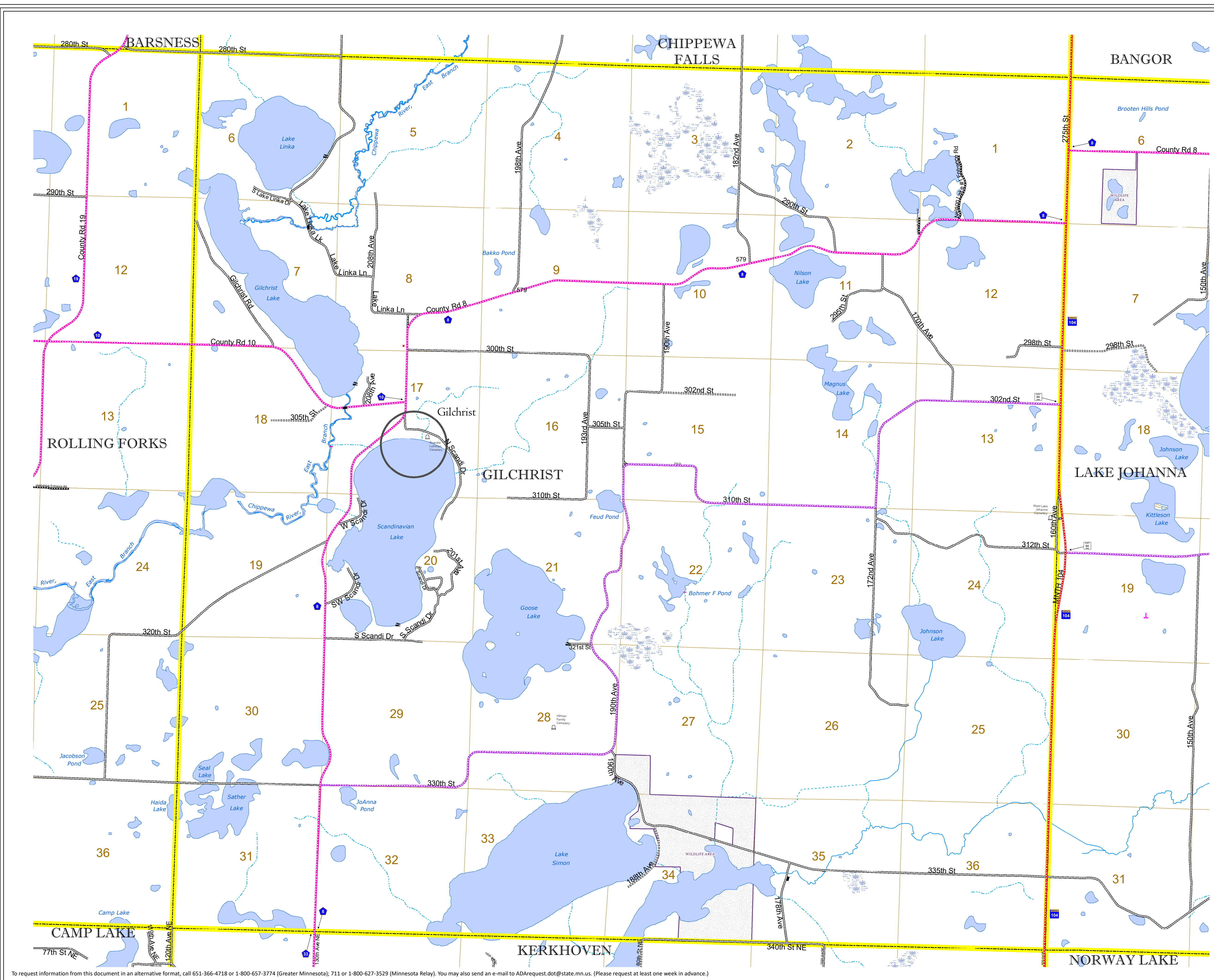


North American Datum  
of 1986

ROAD AND ROADWAY FEATURES		AVIATION FEATURES		
INTERSTATE	CONCRETE	COMMERCIAL AIRPORT	GENERAL AIRPORT	
US HIGHWAY	BITUMINOUS	AIRSTRIP	SEAPLANE	
MN HIGHWAY	GRAVEL	AIRPORT RUNWAY	AIRPORT RUNWAY	
COUNTY STATE AID HIGHWAY	DIRT/UNIMPROVED			
COUNTY ROAD	OTHER			
TOWNSHIP ROAD	UNKNOWN			
UNORGANIZED TERRITORY ROAD				
OTHER ROADS				
Municipal	RAMP OR CONNECTOR			
Private	INTERSTATE EXIT			
National Monument	GREAT RIVER ROAD			
National Wildlife Refuge				
State Park				
Preserve				
RAILROAD AND RAILWAY FEATURES		BOUNDARY FEATURES		
EMPIRE BUILDER STATION (AMTRAK)	TRIBAL LAND	STATE OF MINNESOTA	COUNTY	
NORTHSTAR STATION (COMMUTER)		MUNICIPALITY	UNORGANIZED TERRITORY	
		FEDERAL ADJUSTED URBAN AREA (2014)	CIVIL TOWNSHIP	
		CONGRESSIONAL TOWNSHIP	SECTION	
		MILITARY	VOYAGEURS NATIONAL PARK	
			BOUNDARY WATERS CANOE AREA WILDERNESS	
			STATE PARK	
			REGIONAL PARK	
			NATIONAL FOREST	
			NATIONAL AND STATE FOREST	
			STATE FOREST	
			NATIONAL TRAIL	
			WILDLIFE REFUGUE AREA	
			WILDLIFE MANAGEMENT AREA	
			HYDROLOGIC FEATURES	
			RIVER OR STREAM (PERENNIAL)	LAKE, POND OR RESERVOIR
			STREAM (INTERMITTENT)	DRAINAGE DITCH
			WETLAND	ISLAND OR LAND
			MONUMENT	REGIONAL WATERSHED



Population (U.S. Census 2010): 194



To request information from this document in an alternative format, call 651-366-4718 or 1-800-657-3774 (Greater Minnesota); 711 or 1-800-627-3529 (Minnesota Relay). You may also send an e-mail to ADRequest.dot@state.mn.us. (Please request at least one week in advance.)