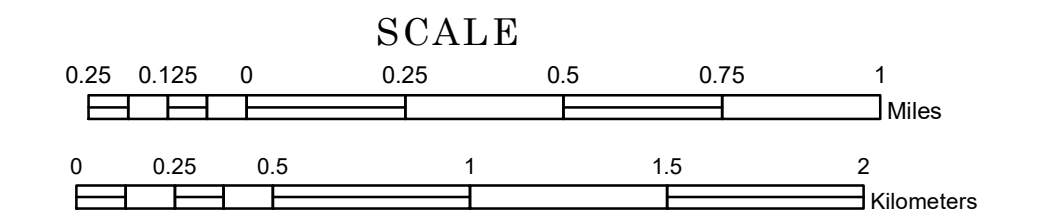


# TOWNSHIP OF WALDEN

PREPARED BY THE  
MINNESOTA DEPARTMENT OF TRANSPORTATION  
OFFICE OF TRANSPORTATION SYSTEM MANAGEMENT

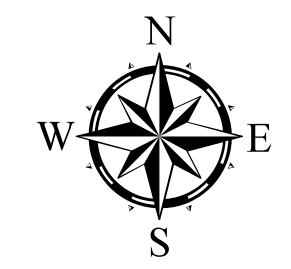
IN COOPERATION WITH  
U.S. DEPARTMENT OF TRANSPORTATION  
FEDERAL HIGHWAY ADMINISTRATION



1 in = 1,600 ft

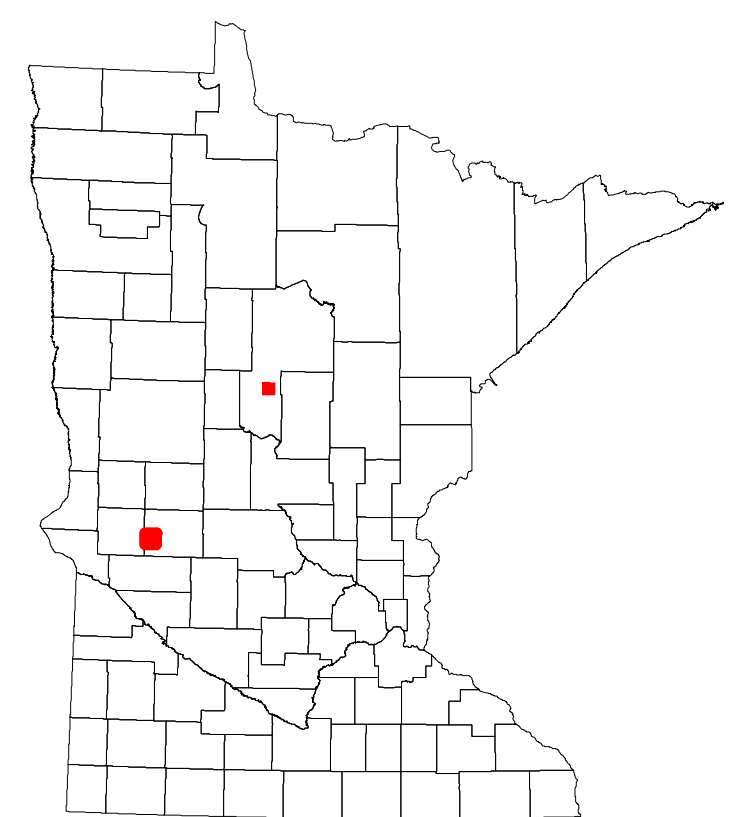
2023

Projection:  
Transverse Mercator  
NAD 1986  
UTM Zone 15

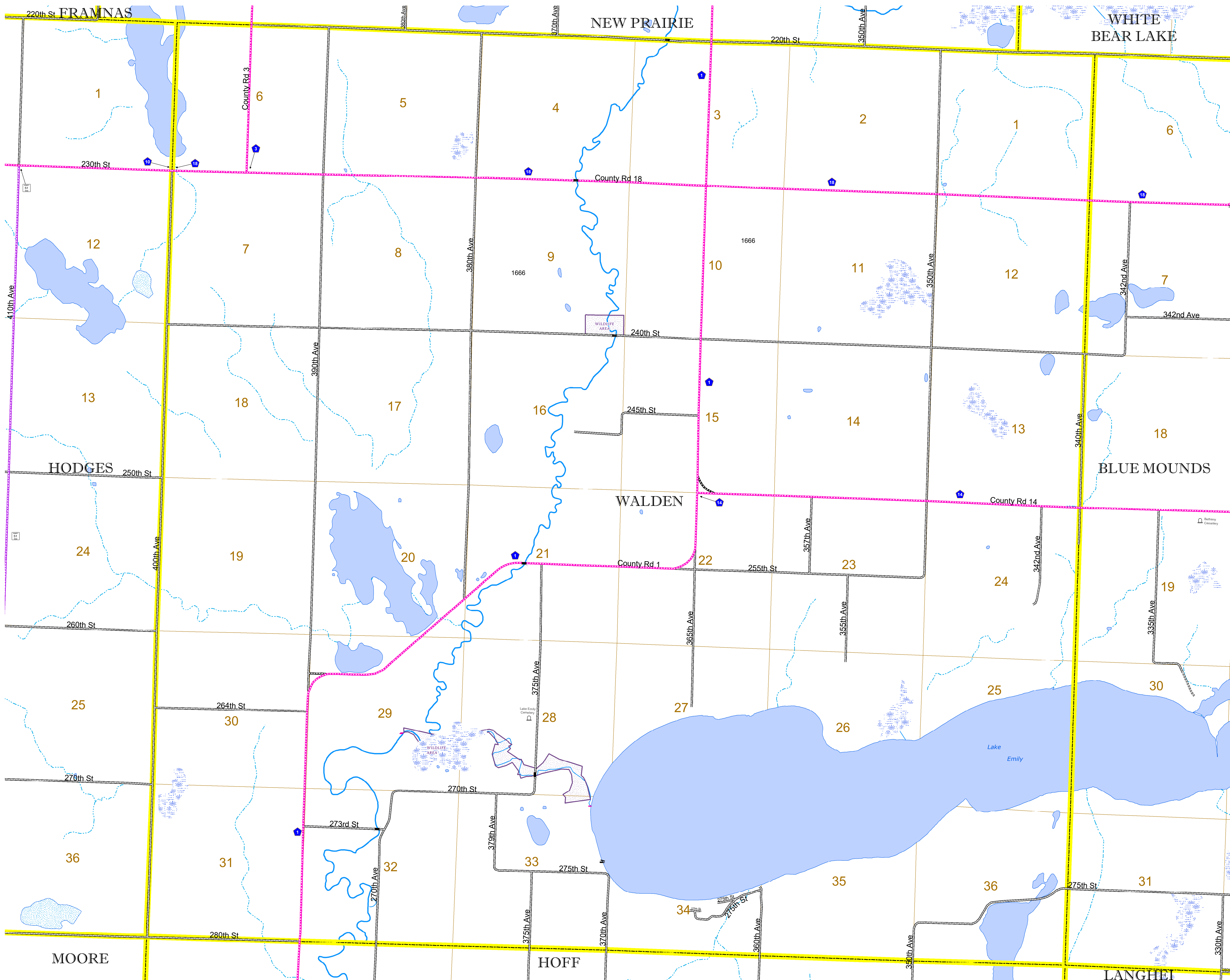


North American Datum  
of 1986

ROAD AND ROADWAY FEATURES	
INTERSTATE	CONCRETE
US HIGHWAY	BITUMINOUS
MN HIGHWAY	GRAVEL
COUNTY STATE AID HIGHWAY	DIRT/UNIMPROVED
COUNTY ROAD	OTHER
TOWNSHIP ROAD	UNKNOWN
UNORGANIZED TERRITORY ROAD	UNKNOWN
OTHER ROADS:	RAMP OR CONNECTOR
Municipal	National Monument
National Park	State Forest
National Wildlife Refuge	State Game
National Forest	State Park
Preserve	Preserve
RAILROAD AND RAILWAY FEATURES	AVIATION FEATURES
EMPIRE BUILDER STATION (AMTRAK)	COMMERCIAL AIRPORT
NORTHSTAR STATION (COMPLUTEX)	GENERAL AIRPORT
LIGHT RAIL	AIRSTRIP
BLUE LINE	SEAPLANE
GREEN LINE	AIRPORT RUNWAY
INFRASTRUCTURE FEATURES	BOUNDARY FEATURES
LONG BRIDGE (300' OR GREATER SPAN)	TRIBAL LAND
MAJOR BRIDGE (20' TO 300' SPAN)	STATE OF MINNESOTA
MINOR BRIDGE (5' TO 20' SPAN)	COUNTY
DAM	MUNICIPALITY
LOCK AND DAM	UNORGANIZED TERRITORY
CITY CENTERS	FEDERAL ADJUSTED URBAN AREA (FY14)
STATE CAPITAL	CIVIL TOWNSHIP
COUNTY SEAT	CONGRESSIONAL TOWNSHIP
CITY CENTER	SECTION
UNINCORPORATED COMMUNITY	MILITARY
PUBLIC SERVICE FEATURES	VOYAGEURS NATIONAL PARK
MNDOT OFFICE	BOUNDARY WATERS CANOE AREA WILDERNESS
MNDOT TRUCK STATION	STATE PARK
HIGHWAY PATROL DISTRICT OFFICE	REGIONAL PARK
STATE TRAVEL INFORMATION CENTER	NATIONAL FOREST
REST AREA (FULL SERVICE)	NATIONAL AND STATE FOREST
REST AREA (VAULT TOILET)	STATE FOREST
WAYSIDE (VAULT OR PITY TOILET)	NATIONAL TRAIL
PARK AND RIDE LOT	WILDLIFE REFUGUE AREA
PORT OF ENTRY	WILDLIFE MANAGEMENT AREA
PUBLIC ACCESS POINT	HYDROLOGIC FEATURES
MN STATE COLLEGE AND UNIVERSITY SYSTEM (MNSCU)	RIVER OR STREAM (PERMANENT)
UNIVERSITY OF MN SYSTEM	LAKE, POND OR RESERVOIR
FAIRGROUNDS	STREAM (INTERMITTENT)
CULTURAL FEATURES	DRAINAGE DITCH
STATE HISTORICAL MARKER	WETLAND
HISTORIC DISTRICT	ISLAND OR LAND
HISTORIC SITE	REGIONAL WATERSHED
MONUMENT	



Population (U.S. Census 2010): 169



To request information from this document in an alternative format, call 651-366-4718 or 1-800-657-3774 (Greater Minnesota); 711 or 1-800-627-3529 (Minnesota Relay). You may also send an e-mail to [ADArequest.dot@state.mn.us](mailto:ADArequest.dot@state.mn.us). (Please request at least one week in advance.)