

TOWNSHIP OF CHARLESTOWN

PREPARED BY THE
MINNESOTA DEPARTMENT OF TRANSPORTATION
OFFICE OF TRANSPORTATION SYSTEM MANAGEMENT

IN COOPERATION WITH
U.S. DEPARTMENT OF TRANSPORTATION
FEDERAL HIGHWAY ADMINISTRATION



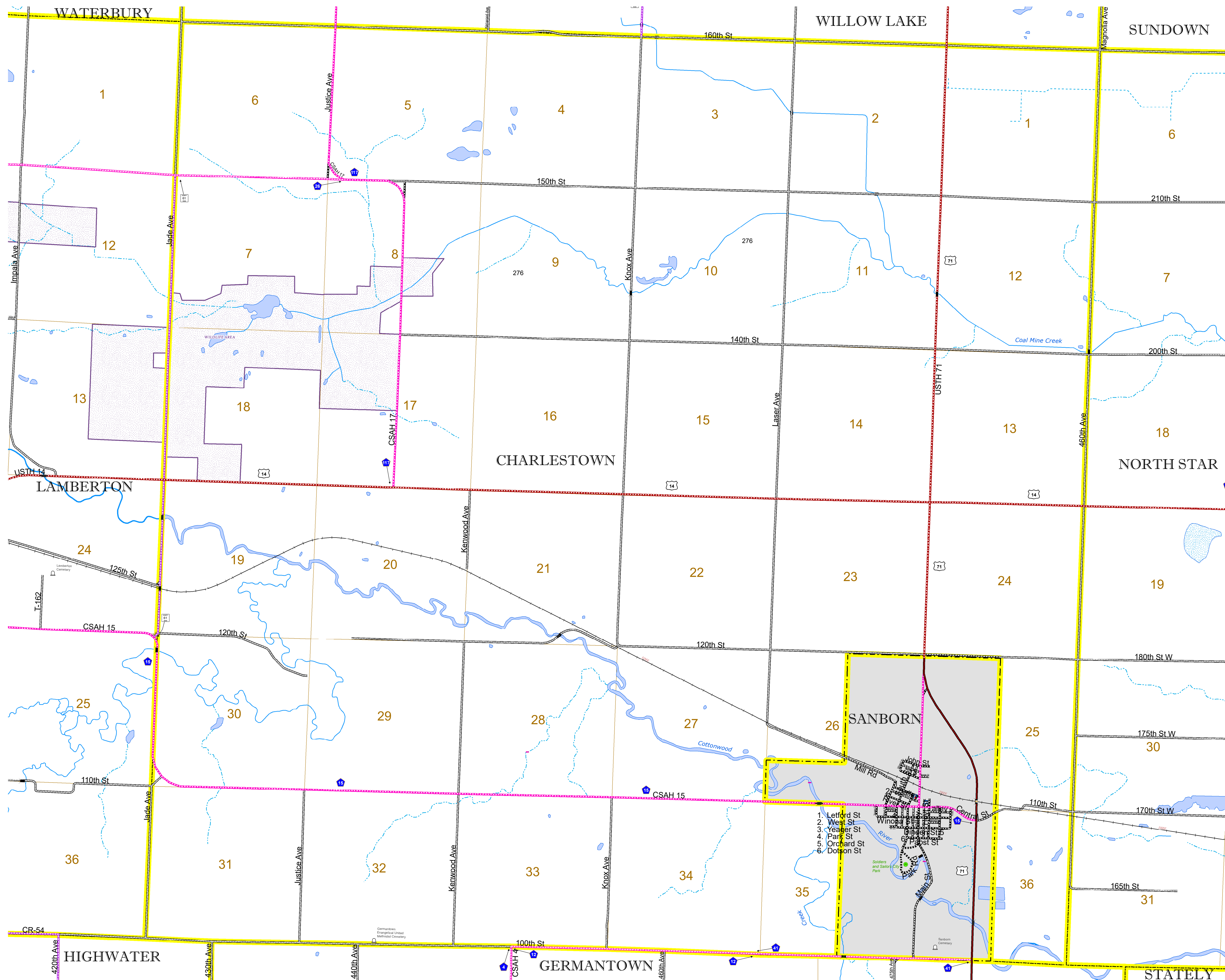
1 in = 1,600 ft

2023

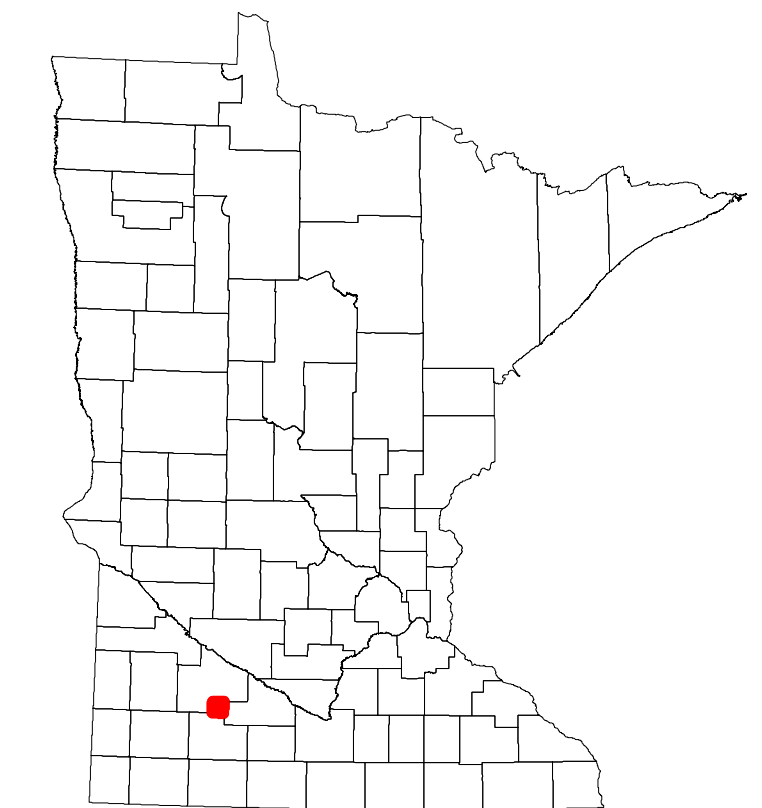
Projection:
Transverse Mercator
NAD 1986
UTM Zone 15



North American Datum
of 1986



ROAD AND ROADWAY FEATURES	
INTERSTATE	CONCRETE
US HIGHWAY	BITUMINOUS
MN HIGHWAY	GRAVEL
COUNTY STATE AID HIGHWAY	DIRT/UNIMPROVED
COUNTY ROAD	OTHER
TOWNSHIP ROAD	UNKNOWN
UNORGANIZED TERRITORY ROAD	
OTHER ROADS	
Municipal	RAMP OR CONNECTOR
Private	INTERSTATE EXIT
National Monument	GREAT RIVER ROAD
National Park	
National Wildlife Refuge	
State Park	
Preserve	
RAILROAD AND RAILWAY FEATURES	
EMPIRE BUILDER STATION (AMTRAK)	COMMERCIAL AIRPORT
NORTHSTAR STATION (COMMUTER)	GENERAL AIRPORT
LIGHT RAIL	AIRSTRIP
BLUE LINE	SEAPLANE
GREEN LINE	AIRPORT RUNWAY
INFRASTRUCTURE FEATURES	
LONG BRIDGE (200' or Greater Span)	TRIAL LAND
MAJOR BRIDGE (20' to 200' Span)	STATE OF MINNESOTA
MINOR BRIDGE (5' to 20' Span)	COUNTY
DAM	MUNICIPALITY
LOCK AND DAM	UNORGANIZED TERRITORY
CITY CENTERS	
STATE CAPITAL	FEDERAL ADJUSTED URBAN AREA (2014)
COUNTY SEAT	CIVIL TOWNSHIP
CITY CENTER	CONGRESSIONAL TOWNSHIP
UNINCORPORATED COMMUNITY	
PUBLIC SERVICE FEATURES	
MNDOT OFFICE	MILITARY
MNDOT TRUCK STATION	VOYAGEURS NATIONAL PARK
HIGHWAY PATROL DISTRICT OFFICE	BOUNDARY WATERS CANOE AREA WILDERNESS
STATE TRAVEL INFORMATION CENTER	STATE PARK
REST AREA (Full Service)	REGIONAL PARK
REST AREA (Vault Toilets)	NATIONAL FOREST
WAYSIDE (Vault or Pit Toilets)	NATIONAL AND STATE FOREST
PARK AND RIDE LOT	STATE FOREST
PORT OF ENTRY	NATIONAL TRAIL
PUBLIC ACCESS POINT	WILDLIFE REFUGE AREA
MN STATE COLLEGE AND UNIVERSITY SYSTEM (MNSCU)	WILDLIFE MANAGEMENT AREA
UNIVERSITY OF MN SYSTEM	HYDROLOGIC FEATURES
FAIRGROUNDS	RIVER OR STREAM (PERENNIAL)
CULTURAL FEATURES	
STATE HISTORICAL MARKER	LAKE, POND OR RESERVOIR
HISTORIC DISTRICT	STREAM (Intermittent)
HISTORIC SITE	DRAINAGE DITCH
MONUMENT	WETLAND
	ISLAND OR LAND
	REGIONAL WATERSHED



To request information from this document in an alternative format, call 651-366-4718 or 1-800-657-3774 (Greater Minnesota); 711 or 1-800-627-3529 (Minnesota Relay). You may also send an e-mail to ADAREquest.dot@state.mn.us. (Please request at least one week in advance.)