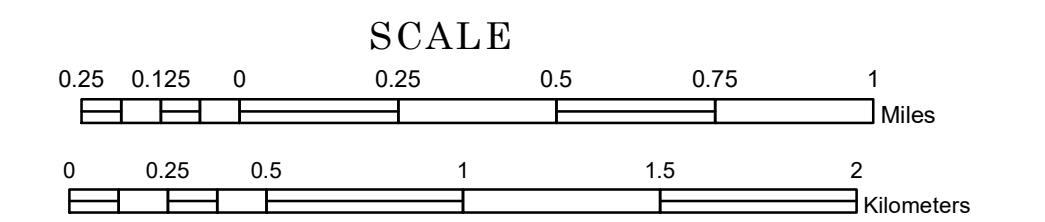


TOWNSHIP OF UNDERWOOD

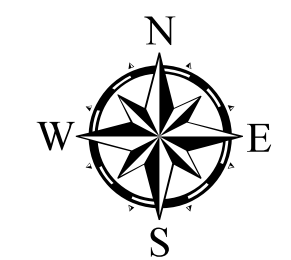
PREPARED BY THE
MINNESOTA DEPARTMENT OF TRANSPORTATION
OFFICE OF TRANSPORTATION SYSTEM MANAGEMENT

IN COOPERATION WITH
U.S. DEPARTMENT OF TRANSPORTATION
FEDERAL HIGHWAY ADMINISTRATION



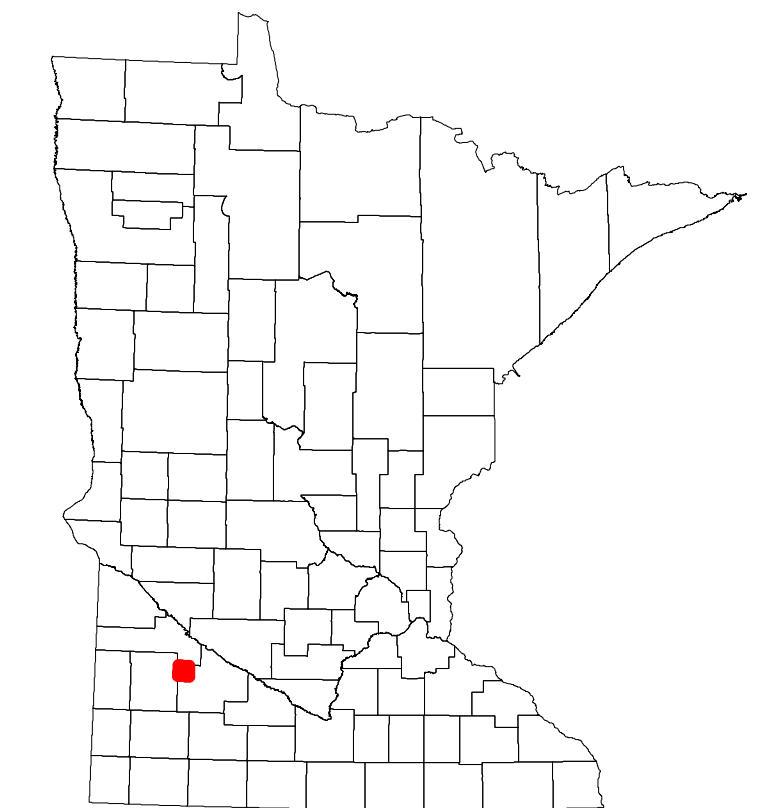
2023

Projection:
Transverse Mercator
NAD 1986
UTM Zone 15

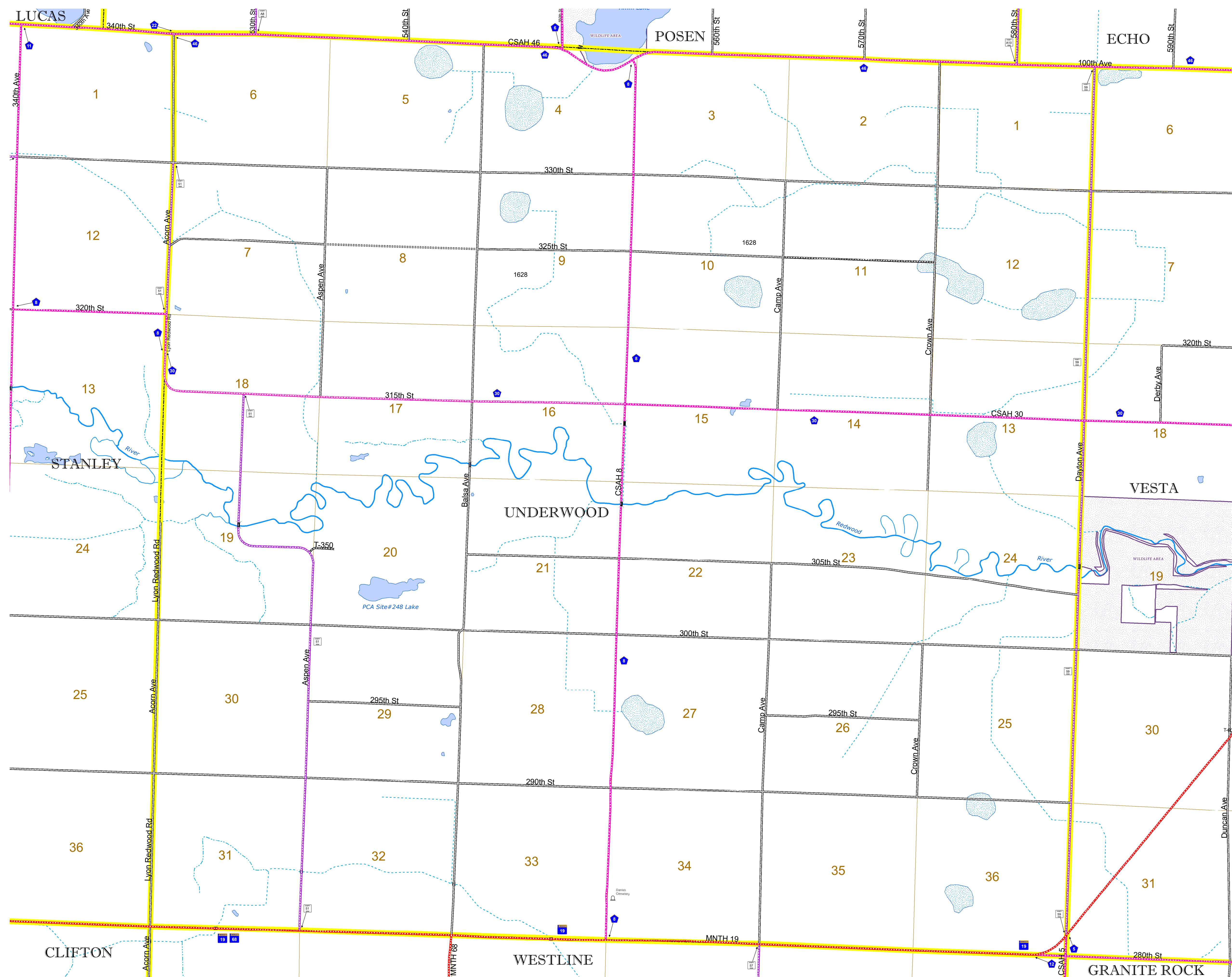


North American Datum
of 1986

ROAD AND ROADWAY FEATURES		
INTERSTATE	CONCRETE	
US HIGHWAY	BITUMINOUS	
MN HIGHWAY	GRAVEL	
COUNTY STATE AID HIGHWAY	DIRT/UNIMPROVED	
COUNTY ROAD	OTHER	
TOWNSHIP ROAD	UNKNOWN	
UNORGANIZED TERRITORY ROAD		
OTHER ROADS		
Municipal Private National Monument State Forest	RAMP OR CONNECTOR	
Nature Service National Park National Wildlife State Game Preserve	INTERSTATE EXIT	
	GREAT RIVER ROAD	
RAILROAD AND RAILWAY FEATURES		
EMPIRE BUILDER STATION (AMTRAK)	COMMERCIAL AIRPORT	
NORTHSTAR STATION (COMMUTER)	GENERAL AIRPORT	
LIGHT RAIL	AIRSTRIP	
BLUE LINE	SEAPLANE	
GREEN LINE	AIRPORT RUNWAY	
INFRASTRUCTURE FEATURES		
LONG BRIDGE (200' OR GREATER SPAN)	TRIAL LAND	
MAJOR BRIDGE (20' TO 200' SPAN)	STATE OF MINNESOTA	
MINOR BRIDGE (5' TO 20' SPAN)	COUNTY	
LOCK AND DAM	MUNICIPALITY	
CITY CENTERS		
STATE CAPITAL	UNINCORPORATED COMMUNITY	
COUNTY SEAT		
CITY CENTER		
PUBLIC SERVICE FEATURES		
MNDOT OFFICE	VOYAGEURS NATIONAL PARK	
MNDOT TRUCK STATION	BOUNDARY WATERS CANOE AREA WILDERNESS	
HIGHWAY PATROL DISTRICT OFFICE	STATE PARK	
STATE TRAVEL INFORMATION CENTER	REGIONAL PARK	
REST AREA (FULL SERVICE)	NATIONAL FOREST	
REST AREA (VAULT TOILET)	NATIONAL AND STATE FOREST	
WAYSIDE (VAULT OR PITY TOILET)	STATE FOREST	
PARK AND RIDE LOT	NATIONAL TRAIL	
PORT OF ENTRY	WILDLIFE REFUGUE AREA	
PUBLIC ACCESS POINT	WILDLIFE MANAGEMENT AREA	
MN STATE COLLEGE AND UNIVERSITY SYSTEM (MNSCU)	HYDROLOGIC FEATURES	
UNIVERSITY OF MN SYSTEM	RIVER OR STREAM (PERENNIAL)	
FAIRGROUNDS	LAKE, POND OR RESERVOIR	
CULTURAL FEATURES		
STATE HISTORICAL MARKER	STREAM (INTERMITTENT)	
HISTORIC DISTRICT	DRAINAGE DITCH	
HISTORIC SITE	WETLAND	
MONUMENT	ISLAND OR LAND	
	REGIONAL WATERSHED	



Population (U.S. Census 2010): 206



To request information from this document in an alternative format, call 651-366-4718 or 1-800-657-3774 (Greater Minnesota); 711 or 1-800-627-3529 (Minnesota Relay). You may also send an e-mail to ADARrequest.dot@state.mn.us. (Please request at least one week in advance.)