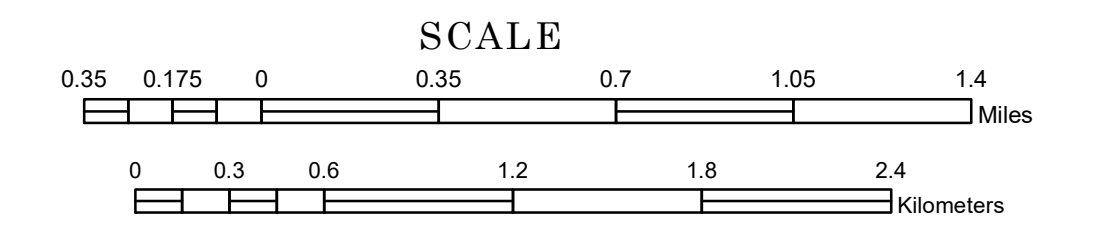


# TOWNSHIP OF BIRCH COOLEY

PREPARED BY THE  
MINNESOTA DEPARTMENT OF TRANSPORTATION  
OFFICE OF TRANSPORTATION SYSTEM MANAGEMENT

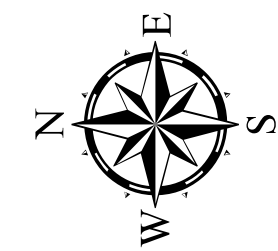
IN COOPERATION WITH  
U.S. DEPARTMENT OF TRANSPORTATION  
FEDERAL HIGHWAY ADMINISTRATION



1 in = 2,000 ft

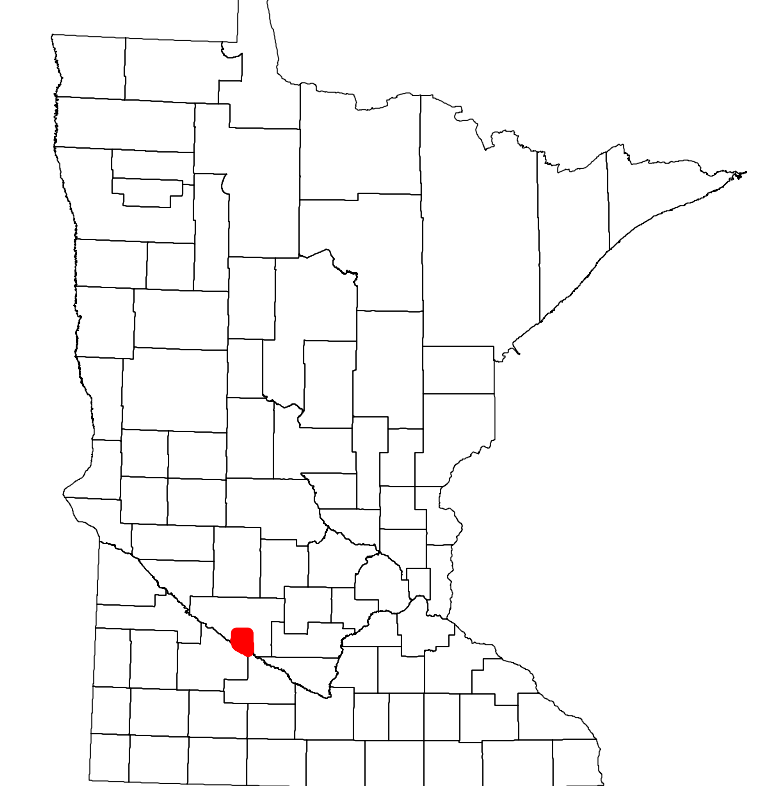
2023

Projection:  
Transverse Mercator  
NAD 1986  
UTM Zone 15

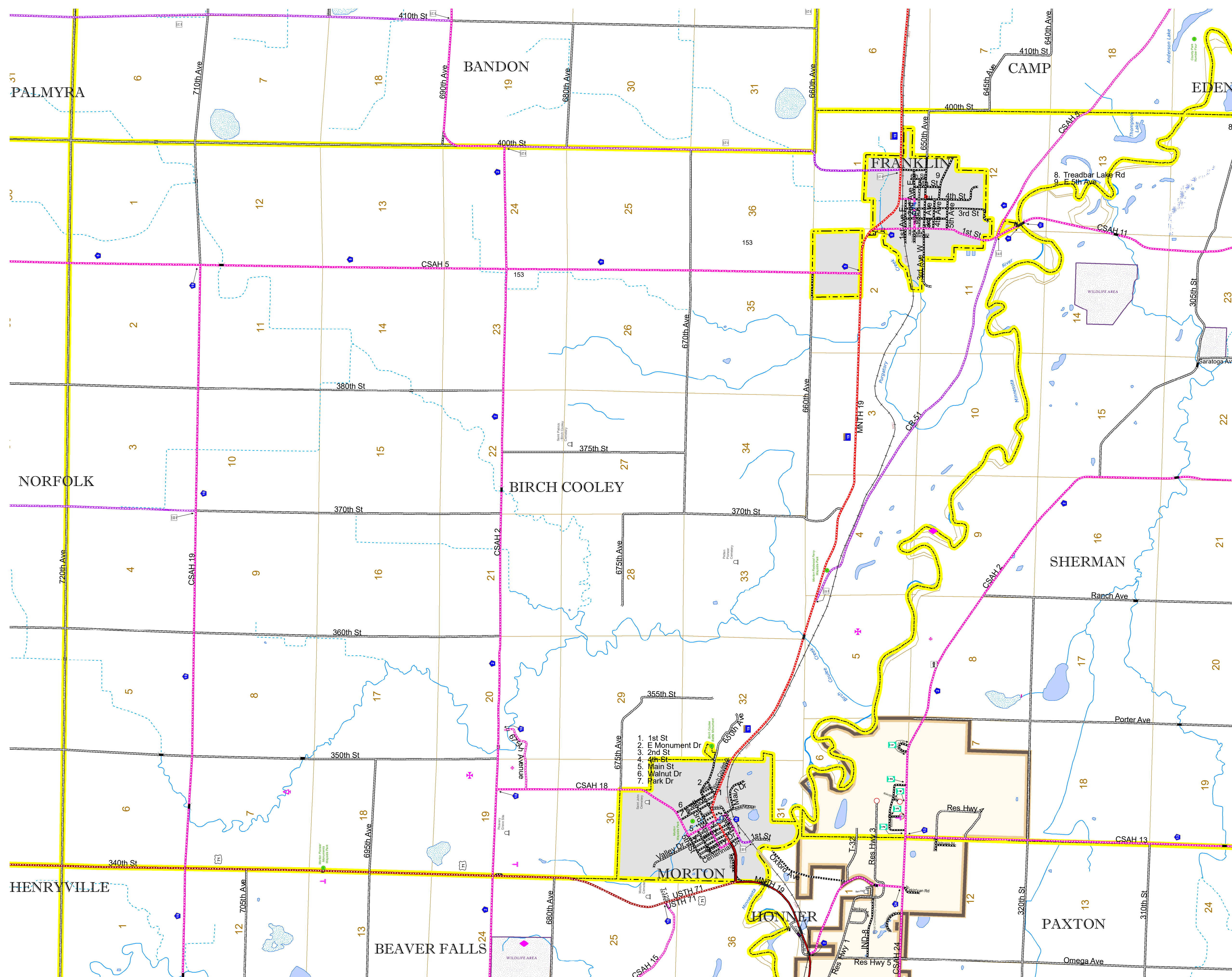


North American Datum  
of 1986

ROAD AND ROADWAY FEATURES		AVIATION FEATURES	
INTERSTATE	CONCRETE	COMMERCIAL AIRPORT	GENERAL AIRPORT
US HIGHWAY	BITUMINOUS	AIRSTRIP	SEAPLANE
MN HIGHWAY	GRAVEL	AIRPORT RUNWAY	TRIAL LAND
COUNTY STATE AID HIGHWAY	DIRT/UNIMPROVED		STATE OF MINNESOTA
COUNTY ROAD	OTHER		COUNTY
TOWNSHIP ROAD	UNKNOWN		MUNICIPALITY
UNORGANIZED TERRITORY ROAD			UNORGANIZED TERRITORY
OTHER ROADS			FEDERAL ADJUSTED URBAN AREA (2014)
Municipal	RAMP OR CONNECTOR		CIVIL TOWNSHIP
Private	INTERSTATE EXIT		CONGRESSIONAL TOWNSHIP
National Monument			SECTION
National Park			MILITARY
National Wildlife Refuge			VOYAGERS NATIONAL PARK
State Park			BOUNDARY WATERS CANOE AREA WILDERNESS
Preserve			STATE PARK
			REGIONAL PARK
			NATIONAL FOREST
			NATIONAL AND STATE FOREST
			STATE FOREST
			WILDLIFE REFUGUE AREA
			WILDLIFE MANAGEMENT AREA
			HYDROLOGIC FEATURES
			RIVER OR STREAM (PERENNIAL)
			LAKE, POND OR RESERVOIR
			STREAM (INTERMITTENT)
			DRAINAGE DITCH
			WETLAND
			ISLAND OR LAND
			REGIONAL WATERSHED



Population (U.S. Census 2010): 245



To request information from this document in an alternative format, call 651-366-4718 or 1-800-657-3774 (Greater Minnesota); 711 or 1-800-627-3529 (Minnesota Relay). You may also send an e-mail to ADRequest.dot@state.mn.us. (Please request at least one week in advance.)