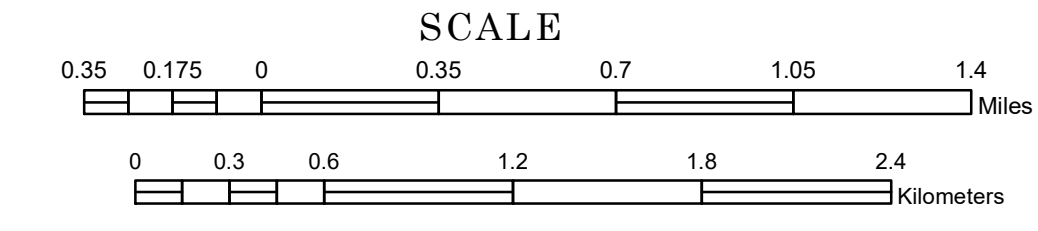


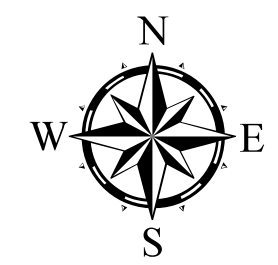
TOWNSHIP OF HAWK CREEK

PREPARED BY THE
MINNESOTA DEPARTMENT OF TRANSPORTATION
OFFICE OF TRANSPORTATION SYSTEM MANAGEMENT

IN COOPERATION WITH
U.S. DEPARTMENT OF TRANSPORTATION
FEDERAL HIGHWAY ADMINISTRATION



1 in = 2,000 ft
2023



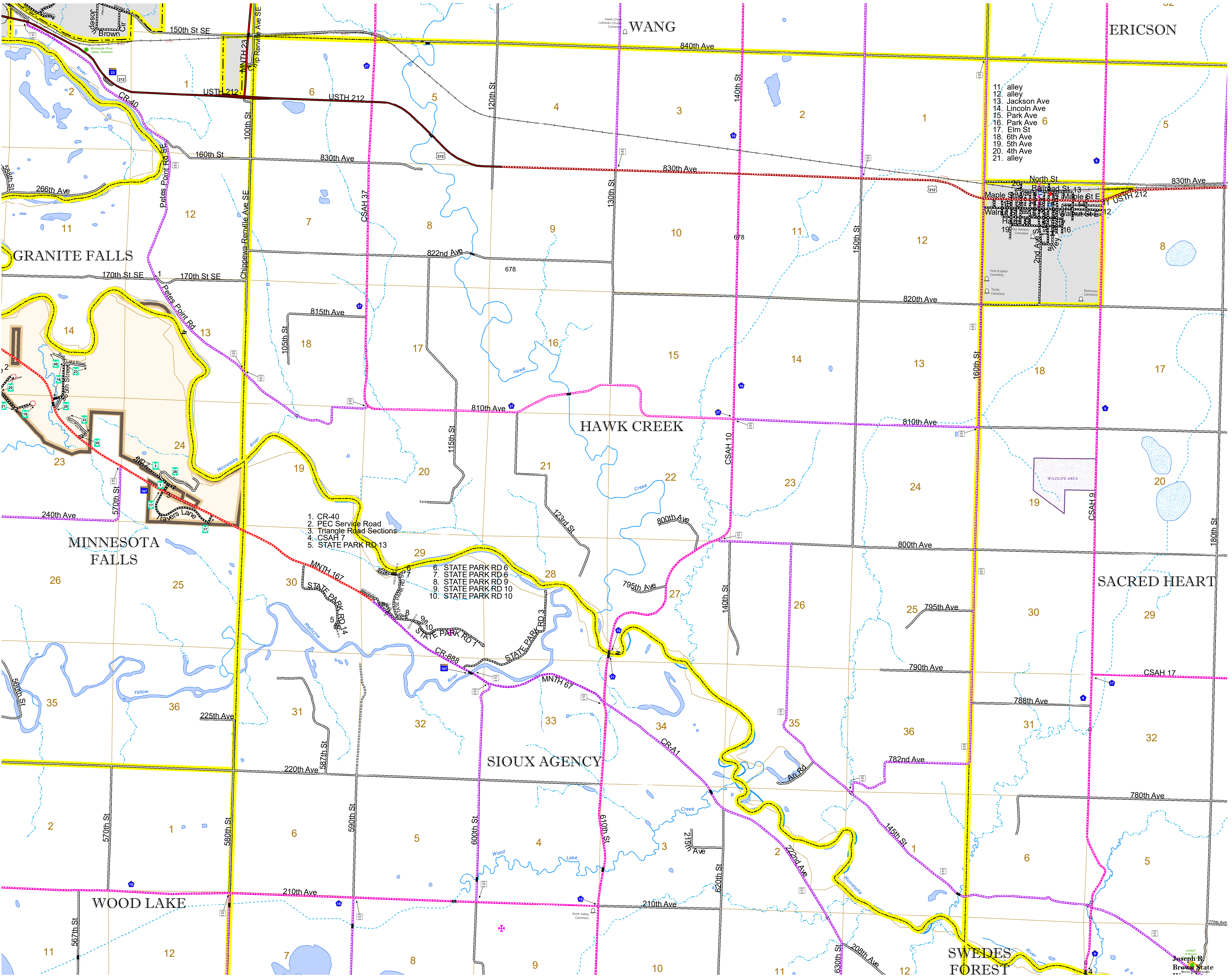
Projection:
Transverse Mercator
NAD 1986
UTM Zone 15

North American Datum
of 1986

ROAD AND ROADWAY FEATURES	
INTERSTATE	CONCRETE
US HIGHWAY	BITUMINOUS
MN HIGHWAY	GRAVEL
COUNTY STATE AID HIGHWAY	DIRT/UNIMPROVED
COUNTY ROAD	OTHER
TOWNSHIP ROAD	UNKNOWN
UNORGANIZED TERRITORY ROAD	
OTHER ROADS	
Municipal	RAMP OR CONNECTOR
Private	INTERSTATE EXIT
National Monument	AVIATION FEATURES
State Forest	COMMERCIAL AIRPORT
Nature Service	GENERAL AIRPORT
National Park	AIRSTRIP
National Wildlife	SEAPLANE
State Game	AIRPORT RUNWAY
State Park	
Preserve	
RAILROAD AND RAILWAY FEATURES	
EMPIRE BUILDER STATION (AMTRAK)	COMMERCIAL AIRPORT
NORTHSTAR STATION (COMPUTER)	GENERAL AIRPORT
	AIRSTRIP
	SEAPLANE
	AIRPORT RUNWAY
INFRASTRUCTURE FEATURES	
LONG BRIDGE (200' OR GREATER SPAN)	TRIAL LAND
MAJOR BRIDGE (20' TO 200' SPAN)	STATE OF MINNESOTA
MINOR BRIDGE (5' TO 20' SPAN)	COUNTY
DAM	MUNICIPALITY
LOCK AND DAM	UNORGANIZED TERRITORY
	FEDERAL ADJUSTED URBAN AREA (2014)
	CIVIL TOWNSHIP
	CONGRESSIONAL DISTRICT
	UNINCORPORATED COMMUNITY
CITY CENTERS	
STATE CAPITAL	SECTION
COUNTY SEAT	MILITARY
CITY CENTER	VOYAGEURS NATIONAL PARK
UNINCORPORATED COMMUNITY	BOUNDARY WATERS CANOE AREA WILDERNESS
PUBLIC SERVICE FEATURES	
MNDOT OFFICE	STATE PARK
MNDOT TRUCK STATION	REGIONAL PARK
HIGHWAY PATROL DISTRICT OFFICE	NATIONAL FOREST
STATE TRAVEL INFORMATION CENTER	NATIONAL AND STATE FOREST
REST AREA (FULL SERVICE)	STATE FOREST
REST AREA (VAULT TOILET)	NATIONAL TRAIL
WAYSIDE (VAULT OR PIT TOILET)	WILDLIFE REFUGE AREA
PARK AND RIDE LOT	WILDLIFE MANAGEMENT AREA
PORT OF ENTRY	HYDROLOGIC FEATURES
PUBLIC ACCESS POINT	RIVER OR STREAM (PERMANENT)
MN STATE COLLEGE AND UNIVERSITY SYSTEM (MNSCU)	LAKE, POND OR RESERVOIR
UNIVERSITY OF MN SYSTEM	STREAM (INTERMITTENT)
FAIRGROUNDS	DRAINAGE DITCH
CULTURAL FEATURES	
STATE HISTORICAL MARKER	WETLAND
HISTORIC DISTRICT	ISLAND OR LAND
HISTORIC SITE	REGIONAL WATERSHED
MONUMENT	



Population (U.S. Census 2010): 201



To request information from this document in an alternative format, call 651-366-4718 or 1-800-657-3774 (Greater Minnesota); 711 or 1-800-627-3529 (Minnesota Relay). You may also send an e-mail to ADarequest.dot@state.mn.us. (Please request at least one week in advance.)