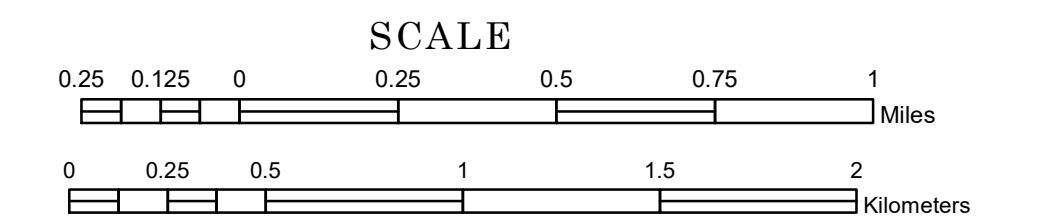


# TOWNSHIP OF WARSAW

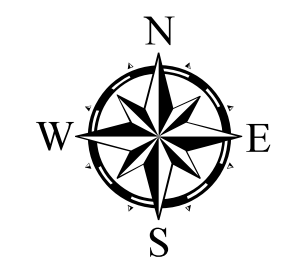
PREPARED BY THE  
MINNESOTA DEPARTMENT OF TRANSPORTATION  
OFFICE OF TRANSPORTATION SYSTEM MANAGEMENT

IN COOPERATION WITH  
U.S. DEPARTMENT OF TRANSPORTATION  
FEDERAL HIGHWAY ADMINISTRATION



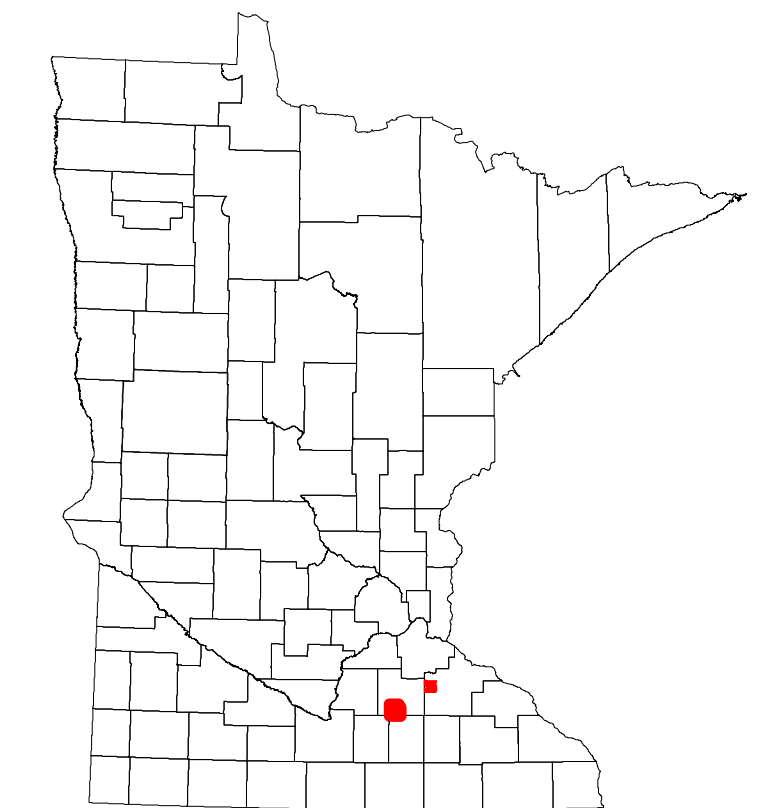
1 in = 1,600 ft  
**2024**

Projection:  
Transverse Mercator  
NAD 1986  
UTM Zone 15

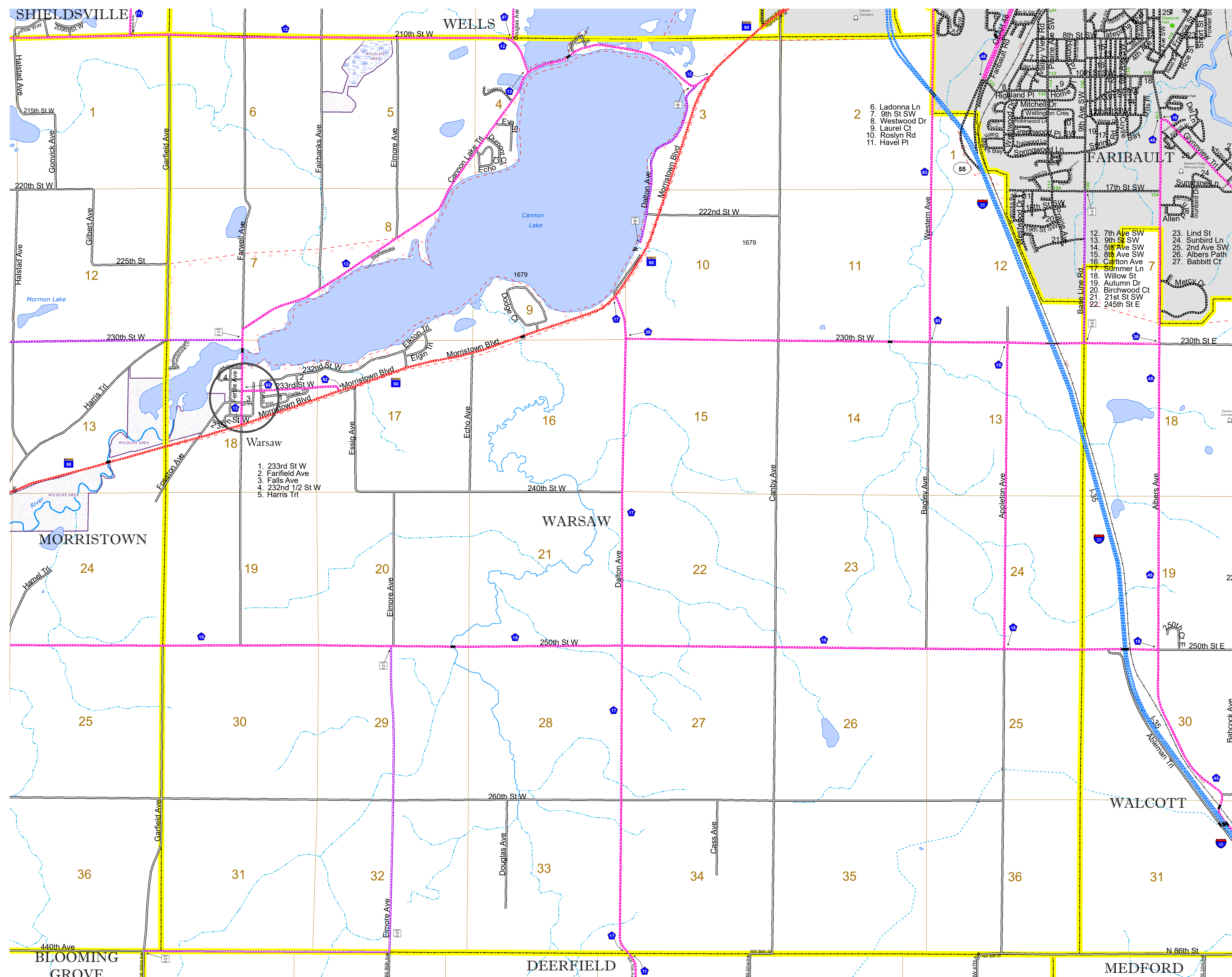


North American Datum  
of 1986

ROAD AND ROADWAY FEATURES	
INTERSTATE	CONCRETE
US HIGHWAY	BITUMINOUS
MN HIGHWAY	GRAVEL
COUNTY STATE AID HIGHWAY	DIRT/UNIMPROVED
COUNTY ROAD	OTHER
TOWNSHIP ROAD	UNKNOWN
UNORGANIZED TERRITORY ROAD	
OTHER ROADS	RAMP OR CONNECTOR
Municipal	Private
National Monument	State Forest
National Park	National Wildlife Refuge
National Forest	State Park
Present	
RAILROAD AND RAILWAY FEATURES	
EMPIRE BUILDER STATION (AMTRAK)	COMMERCIAL AIRPORT
NORTHSTAR STATION (COMPUTER)	GENERAL AIRPORT
	AIRSTRIP
	SEAPLANE
	AIRPORT RUNWAY
	AIRPORT TAXIWAY
INFRASTRUCTURE FEATURES	
LONG BRIDGE (200' OR GREATER SPAN)	TRIAL LAND
MAJOR BRIDGE (20' TO 200' SPAN)	STATE OF MINNESOTA
MINOR BRIDGE (5' TO 20' SPAN)	COUNTY
DAM	MUNICIPALITY
LOCK AND DAM	UNORGANIZED TERRITORY
	FEDERAL ADJUSTED URBAN AREA (2014)
	CIVIL TOWNSHIP
	CONGRESSIONAL TOWNSHIP
	UNINCORPORATED COMMUNITY
CITY CENTERS	
STATE CAPITAL	COUNTY SEAT
CITY CENTER	UNINCORPORATED COMMUNITY
PUBLIC SERVICE FEATURES	
MNDOT OFFICE	MILITARY
MNDOT TRUCK STATION	VOYAGEURS NATIONAL PARK
HIGHWAY PATROL DISTRICT OFFICE	BOUNDARY WATERS CANOE AREA WILDERNESS
STATE TRAVEL INFORMATION CENTER	STATE PARK
REST AREA (Full Service)	REGIONAL FOREST
REST AREA (Vault Toilet)	NATIONAL AND STATE FOREST
WAYSIDE (Vault or Pit Toilet)	STATE FOREST
PARK AND RIDE LOT	NATIONAL TRAIL
PORT OF ENTRY	WILDLIFE REFUGUE AREA
PUBLIC ACCESS POINT	WILDLIFE MANAGEMENT AREA
MN STATE COLLEGE AND UNIVERSITY SYSTEM (MNSCU)	HYDROLOGIC FEATURES
UNIVERSITY OF MN SYSTEM	RIVER OR STREAM (PERENNIAL)
FARSGROUNDS	LAKE, POND OR RESERVOIR
	STREAM (INTERMITTENT)
CULTURAL FEATURES	
STATE HISTORICAL MARKER	DRAINAGE DITCH
HISTORIC DISTRICT	WETLAND
HISTORIC SITE	ISLAND OR LAND
MONUMENT	REGIONAL WATERSHED



Population (U.S. Census 2010): 1320



To request information from this document in an alternative format, call 651-366-4718 or 1-800-657-3774 (Greater Minnesota); 711 or 1-800-627-3529 (Minnesota Relay). You may also send an e-mail to ADArequest.dot@state.mn.us. (Please request at least one week in advance.)