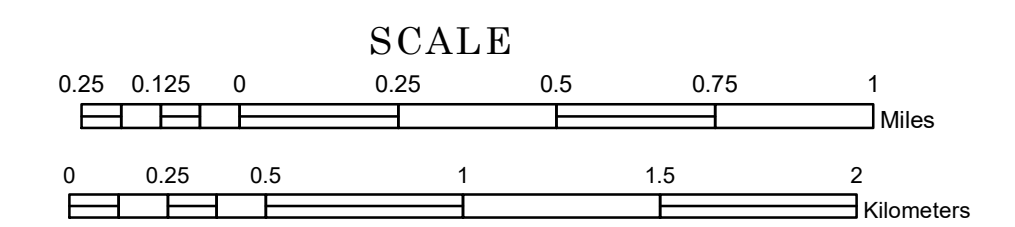


TOWNSHIP OF CEDARBEND

PREPARED BY THE
MINNESOTA DEPARTMENT OF TRANSPORTATION
OFFICE OF TRANSPORTATION SYSTEM MANAGEMENT

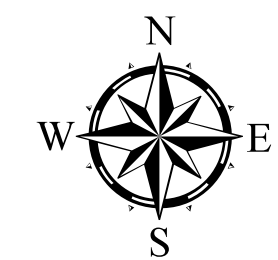
IN COOPERATION WITH
U.S. DEPARTMENT OF TRANSPORTATION
FEDERAL HIGHWAY ADMINISTRATION



1 in = 1,600 ft

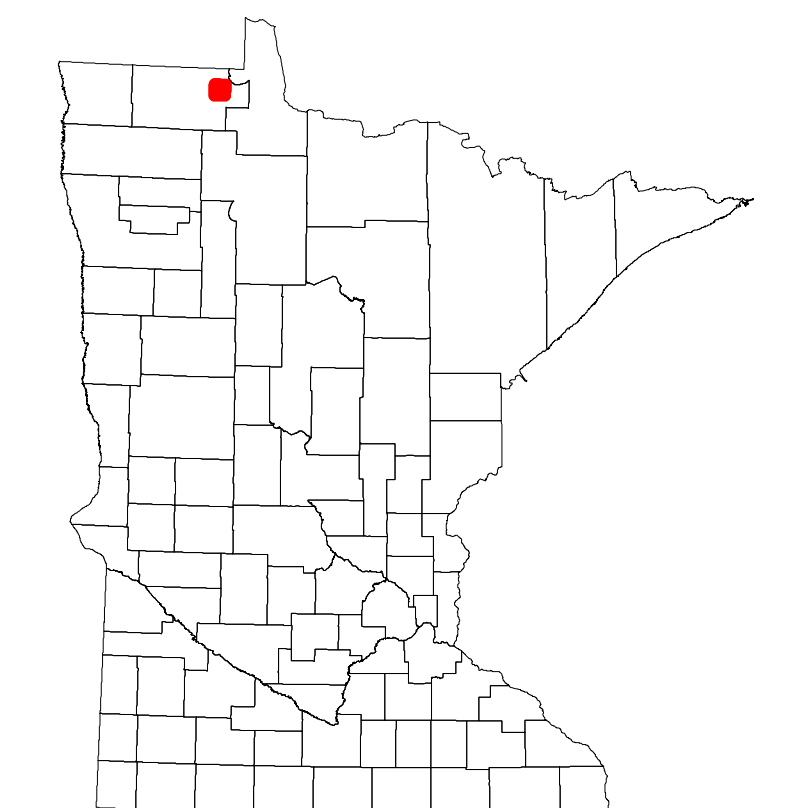
2023

Projection:
Transverse Mercator
NAD 1986
UTM Zone 15

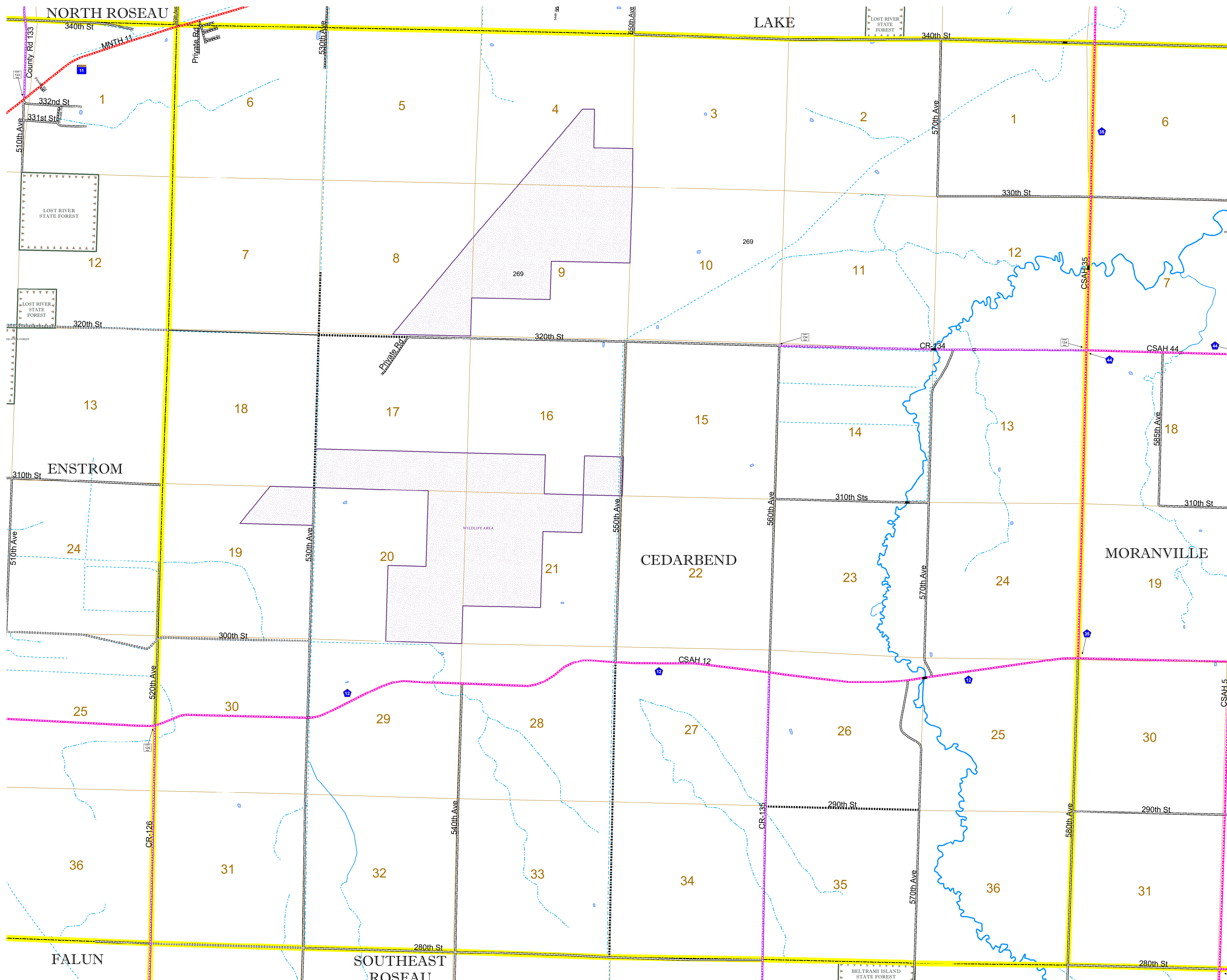


North American Datum
of 1986

ROAD AND ROADWAY FEATURES		AVIATION FEATURES	
INTERSTATE	CONCRETE	COMMERCIAL AIRPORT	GENERAL AIRPORT
US HIGHWAY	BITUMINOUS	AIRSTRIP	SEAPLANE
MN HIGHWAY	GRAVEL	AIRPORT RUNWAY	
COUNTY STATE AID HIGHWAY	DIRT/UNIMPROVED		
COUNTY ROAD	DIRT/UNIMPROVED		
TOWNSHIP ROAD	OTHER		
UNORGANIZED TERRITORY ROAD	UNKNOWN		
OTHER ROADS			
Municipal	RAMP OR CONNECTOR		
Private	INTERSTATE EXIT		
National Monument	GREAT RIVER ROAD		
National Park			
National Wildlife State Game Preserve			
RAILROAD AND RAILWAY FEATURES		BOUNDARY FEATURES	
EMPIRE BUILDER STATION (AMTRAK)	TRIBAL LAND	STATE OF MINNESOTA	COUNTY
NORTHSTAR STATION (COMMUTER)		MUNICIPALITY	UNORGANIZED TERRITORY
LIGHT RAIL		FEDERAL ADJUSTED URBAN AREA (2014)	CIVIL TOWNSHIP
BLUE LINE			CONGRESSIONAL TOWNSHIP
GREEN LINE			SECTION
			MILITARY
			VOYAGEURS NATIONAL PARK
			BOUNDARY WATERS CANOE AREA WILDERNESS
			STATE PARK
			REGIONAL PARK
			NATIONAL FOREST
			NATIONAL AND STATE FOREST
			STATE FOREST
			WILDLIFE REFUGUE AREA
			WILDLIFE MANAGEMENT AREA
INFRASTRUCTURE FEATURES		HYDROLOGIC FEATURES	
LONG BRIDGE (200' OR GREATER SPAN)	TRIAL LAND	STREAM (PERMANENT)	LAKE, POND OR RESERVOIR
MAJOR BRIDGE (20' TO 200' SPAN)		STREAM (INTERMITTENT)	DRAINAGE DITCH
MINOR BRIDGE (5' TO 20' SPAN)			WETLAND
DAM			ISLAND OR LAND
LOCK AND DAM			REGIONAL WATERSHED
CITY CENTERS			
STATE CAPITAL	CITY CENTER		
COUNTY SEAT	UNINCORPORATED COMMUNITY		
PUBLIC SERVICE FEATURES			
MNDOT OFFICE			
MNDOT TRUCK STATION			
HIGHWAY PATROL DISTRICT OFFICE			
STATE TRAVEL INFORMATION CENTER			
REST AREA (FULL SERVICE)			
REST AREA (VAULT TOILET)			
WAYSIDE (VAULT OR PVI TOILET)			
PARK AND RIDE LOT			
PORT OF ENTRY			
PUBLIC ACCESS POINT			
MN STATE COLLEGE AND UNIVERSITY SYSTEM (MNSCU)			
UNIVERSITY OF MN SYSTEM			
FAIRGROUNDS			
CULTURAL FEATURES			
STATE HISTORICAL MARKER			
HISTORIC DISTRICT			
HISTORIC SITE			
MONUMENT			



Population (U.S. Census 2010): 221



To request information from this document in an alternative format, call 651-366-4718 or 1-800-657-3774 (Greater Minnesota); 711 or 1-800-627-3529 (Minnesota Relay). You may also send an e-mail to ADRequest.dot@state.mn.us. (Please request at least one week in advance.)