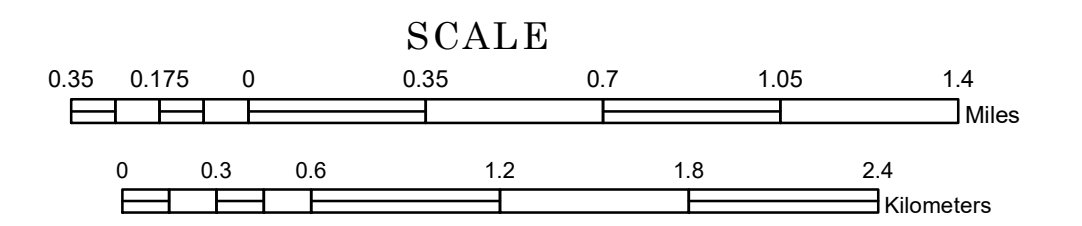


TOWNSHIP OF FIELD

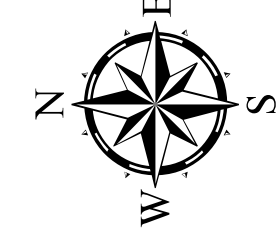
PREPARED BY THE
MINNESOTA DEPARTMENT OF TRANSPORTATION
OFFICE OF TRANSPORTATION SYSTEM MANAGEMENT

IN COOPERATION WITH
U.S. DEPARTMENT OF TRANSPORTATION
FEDERAL HIGHWAY ADMINISTRATION

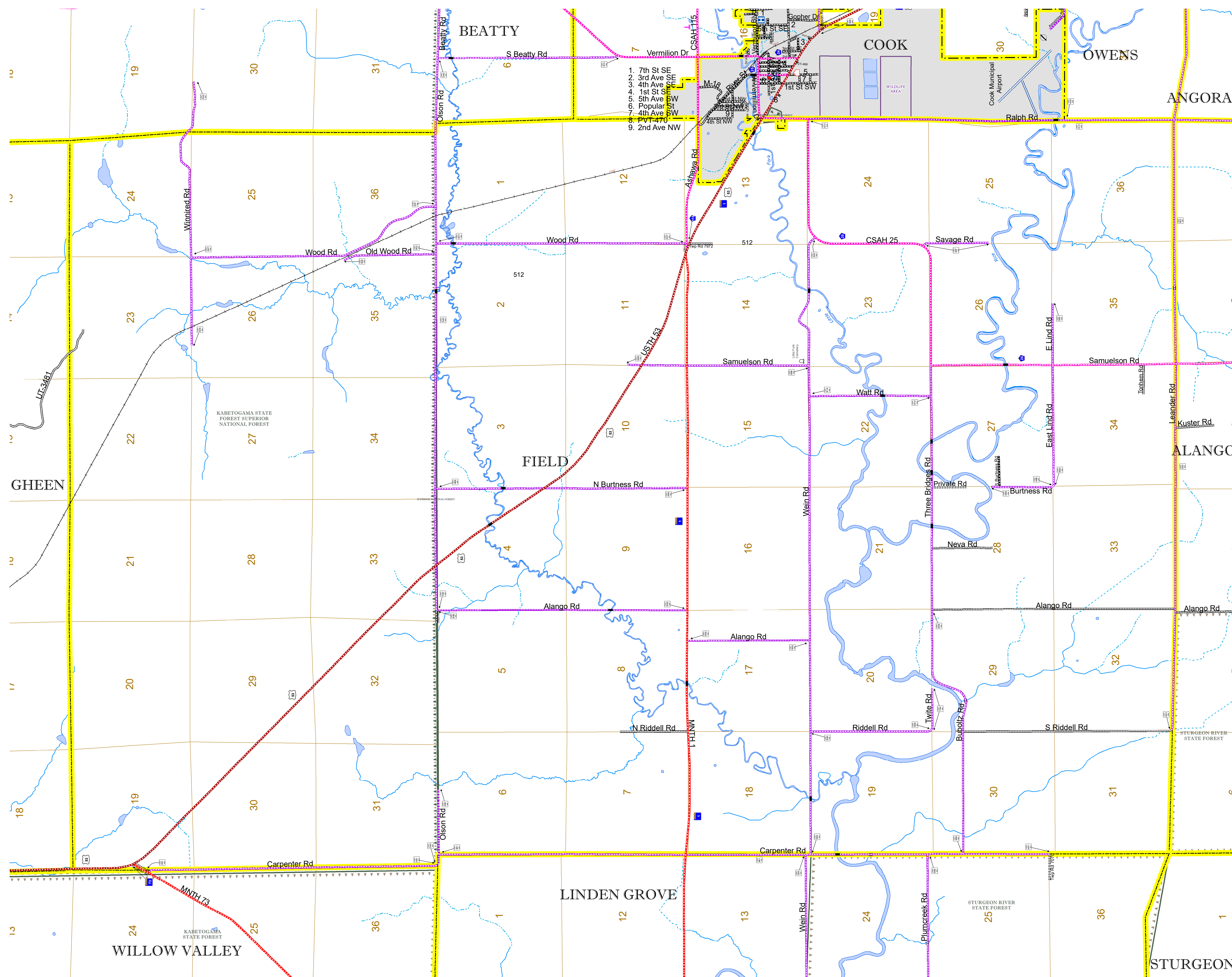


1 in = 2,000 ft
2023

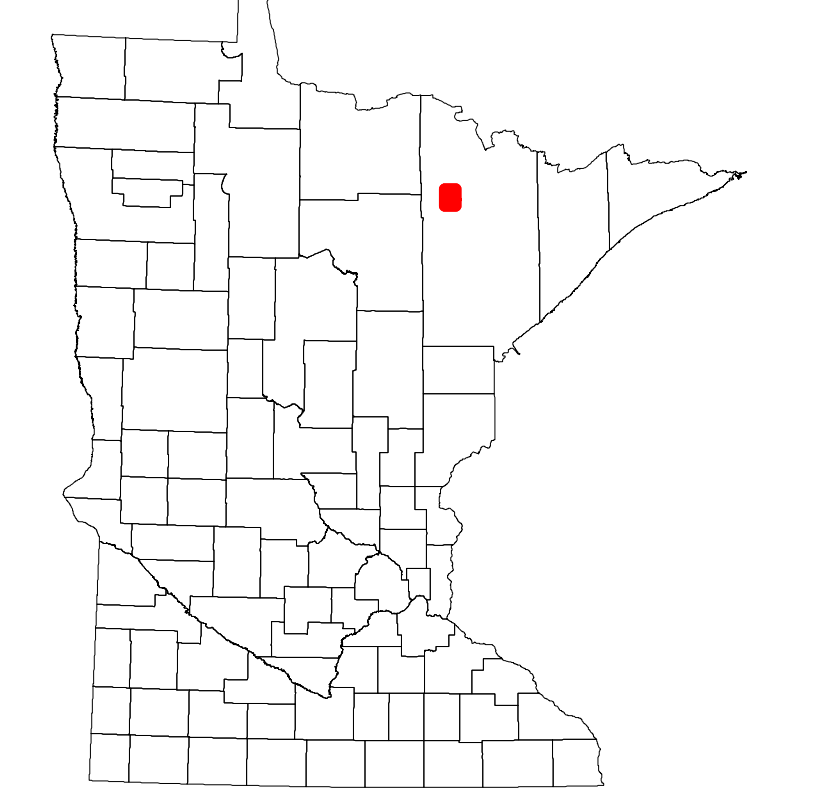
Projection:
Transverse Mercator
NAD 1986
UTM Zone 15



North American Datum
of 1986



ROAD AND ROADWAY FEATURES		AVIATION FEATURES	
INTERSTATE	[Symbol]	CONCRETE	[Symbol]
US HIGHWAY	[Symbol]	BITUMINOUS	[Symbol]
MN HIGHWAY	[Symbol]	GRAVEL	[Symbol]
COUNTY STATE AID HIGHWAY	[Symbol]	DIRT/UNIMPROVED	[Symbol]
COUNTY ROAD	[Symbol]	OTHER	[Symbol]
TOWNSHIP ROAD	[Symbol]	UNKNOWN	[Symbol]
UNORGANIZED TERRITORY ROAD	[Symbol]		
OTHER ROADS:		RAMP OR CONNECTOR	[Symbol]
Municipal	[Symbol]	INTERSTATE EXIT	[Symbol]
Private	[Symbol]	COMMERCIAL AIRPORT	[Symbol]
National Monument	[Symbol]	GENERAL AIRPORT	[Symbol]
State Forest	[Symbol]	AIRSTRIP	[Symbol]
National Park	[Symbol]	SEAPLANE	[Symbol]
National Wildlife Refuge	[Symbol]	AIRPORT RUNWAY	[Symbol]
State Park	[Symbol]		
Preserve	[Symbol]		
RAILROAD AND RAILWAY FEATURES		BOUNDARY FEATURES	
EMPIRE BUILDER STATION (AMTRAK)	[Symbol]	TRIBAL LAND	[Symbol]
NORTHSTAR STATION (COMMUTER)	[Symbol]	STATE OF MINNESOTA	[Symbol]
BLUE LINE	[Symbol]	COUNTY	[Symbol]
GREEN LINE	[Symbol]	MUNICIPALITY	[Symbol]
INFRASTRUCTURE FEATURES		UNORGANIZED TERRITORY	[Symbol]
LONG BRIDGE (200' OR GREATER SPAN)	[Symbol]	FEDERAL ADJUSTED URBAN AREA (2014)	[Symbol]
MAJOR BRIDGE (20' TO 200' SPAN)	[Symbol]	CIVIL TOWNSHIP	[Symbol]
MINOR BRIDGE (5' TO 20' SPAN)	[Symbol]	CONGRESSIONAL TOWNSHIP	[Symbol]
DAM	[Symbol]	SECTION	[Symbol]
LOCK AND DAM	[Symbol]	MILITARY	[Symbol]
CITY CENTERS		VOYAGEURS NATIONAL PARK	[Symbol]
STATE CAPITAL	[Symbol]	BOUNDARY WATERS CANOE AREA WILDERNESS	[Symbol]
COUNTY SEAT	[Symbol]	STATE PARK	[Symbol]
CITY CENTER	[Symbol]	REGIONAL PARK	[Symbol]
UNINCORPORATED COMMUNITY	[Symbol]	NATIONAL FOREST	[Symbol]
PUBLIC SERVICE FEATURES		NATIONAL AND STATE FOREST	[Symbol]
MNDOT OFFICE	[Symbol]	STATE FOREST	[Symbol]
MNDOT TRUCK STATION	[Symbol]	WILDLIFE REFUGE AREA	[Symbol]
HIGHWAY PATROL DISTRICT OFFICE	[Symbol]	WILDLIFE MANAGEMENT AREA	[Symbol]
STATE TRAVEL INFORMATION CENTER	[Symbol]	HYDROLOGIC FEATURES	[Symbol]
REST AREA (FULL SERVICE)	[Symbol]	RIVER OR STREAM (PERMANENT)	[Symbol]
REST AREA (VAULT TOILET)	[Symbol]	LAKE, POND OR RESERVOIR	[Symbol]
WAYSIDE (VAULT OR PIT TOILET)	[Symbol]	STREAM (INTERMITTENT)	[Symbol]
PARK AND RIDE LOT	[Symbol]	DRAINAGE DITCH	[Symbol]
PORT OF ENTRY	[Symbol]	WETLAND	[Symbol]
PUBLIC ACCESS POINT	[Symbol]	ISLAND OR LAND MONUMENT	[Symbol]
MN STATE COLLEGE AND UNIVERSITY SYSTEM (MNSCU)	[Symbol]		
UNIVERSITY OF MN SYSTEM	[Symbol]		
FAIRGROUNDS	[Symbol]		
CULTURAL FEATURES			
STATE HISTORICAL MARKER	[Symbol]		
HISTORIC DISTRICT	[Symbol]		
HISTORIC SITE	[Symbol]		
MONUMENT	[Symbol]		



Population (U.S. Census 2010): 391

To request information from this document in an alternative format, call 651-366-4718 or 1-800-657-3774 (Greater Minnesota); 711 or 1-800-627-3529 (Minnesota Relay). You may also send an e-mail to ADARquest.dot@state.mn.us. (Please request at least one week in advance.)