

# TOWNSHIP OF GNESEN

PREPARED BY THE  
MINNESOTA DEPARTMENT OF TRANSPORTATION  
OFFICE OF TRANSPORTATION SYSTEM MANAGEMENT

IN COOPERATION WITH  
U.S. DEPARTMENT OF TRANSPORTATION  
FEDERAL HIGHWAY ADMINISTRATION

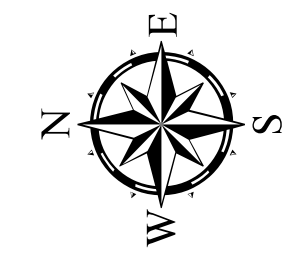
SCALE



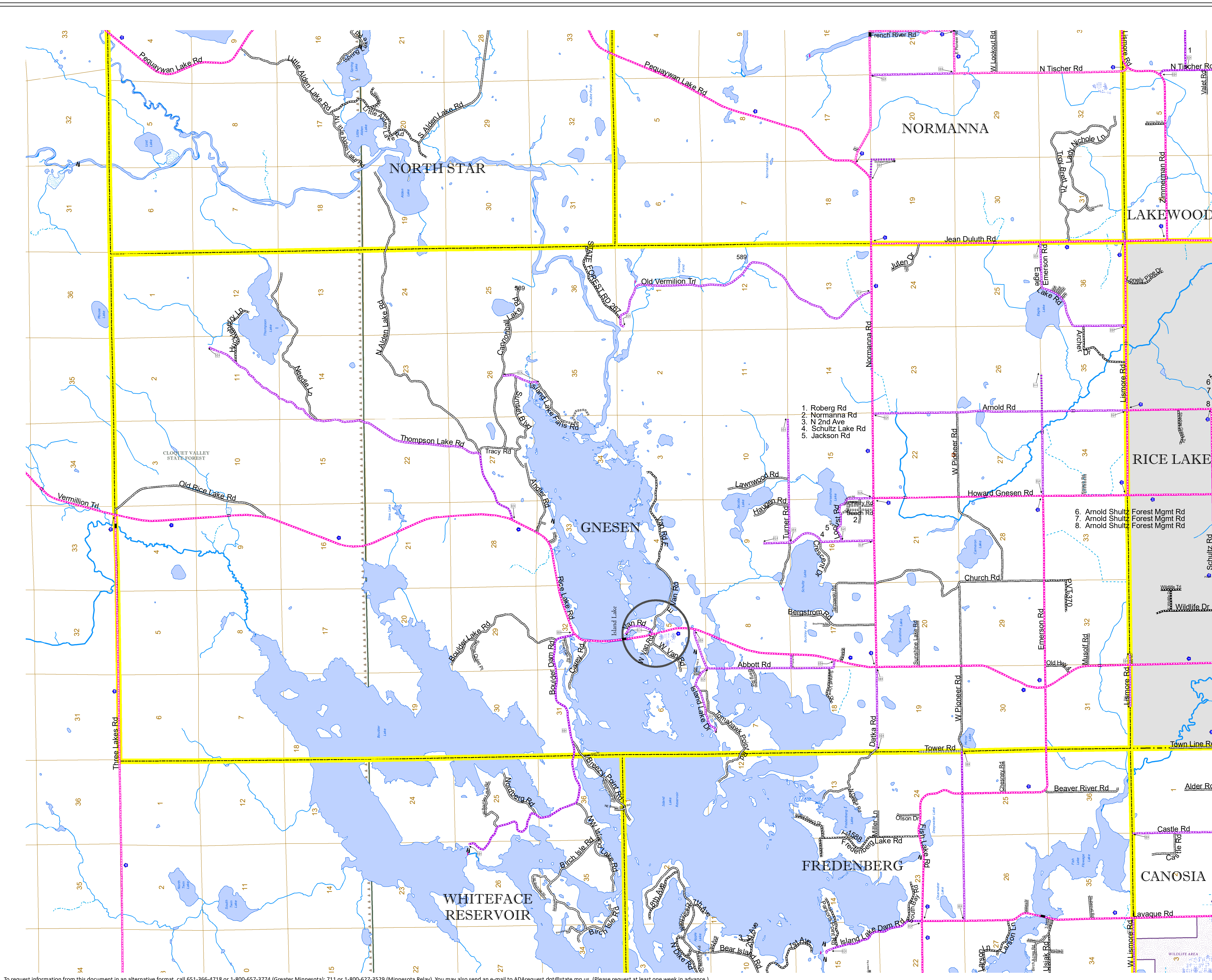
1 in = 2,800 ft

2023

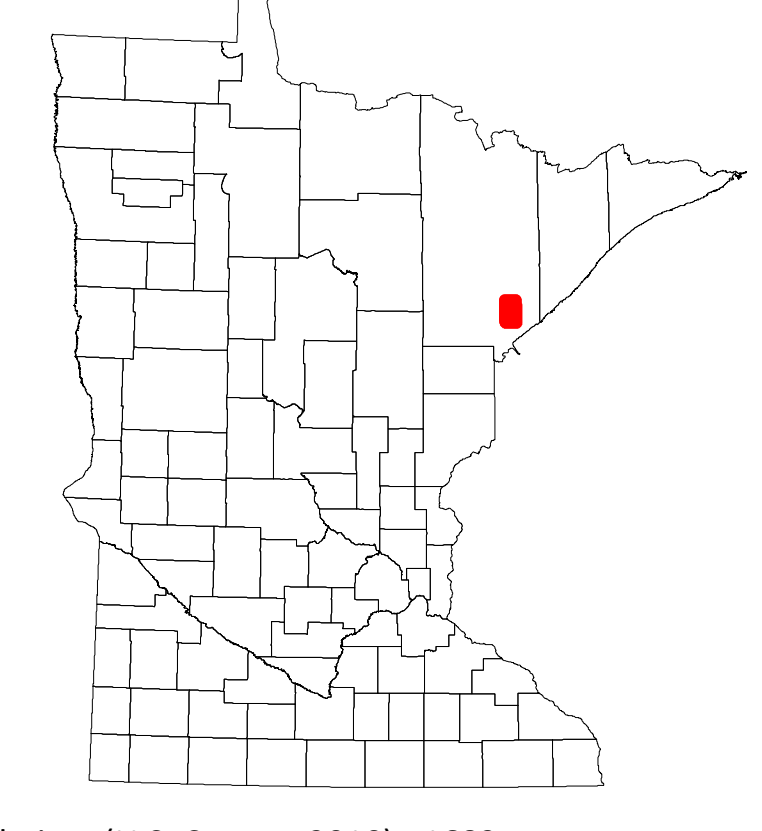
Projection:  
Transverse Mercator  
NAD 1986  
UTM Zone 15



North American Datum  
of 1986



ROAD AND ROADWAY FEATURES	
INTERSTATE	CONCRETE
US HIGHWAY	BITUMINOUS
MN HIGHWAY	GRAVEL
COUNTY STATE AID HIGHWAY	DIRT/UNIMPROVED
COUNTY ROAD	OTHER
TOWNSHIP ROAD	UNKNOWN
UNORGANIZED TERRITORY ROAD	
OTHER ROADS	
Municipal	RAMP OR CONNECTOR
Private	INTERSTATE EXIT
National Wildlife	NATIONAL HIGHWAY
State Forest	STATE PARK
Present	STATE PARK
RAILROAD AND RAILWAY FEATURES	
EMPIRE BUILDER STATION (AMTRAK)	COMMERCIAL AIRPORT
NORTHSTAR STATION (COMMUTER)	GENERAL AIRPORT
	AIRSTRIP
	SEAPLANE
	AIRPORT RUNWAY
INFRASTRUCTURE FEATURES	
LONG BRIDGE (200' OR GREATER SPAN)	TRIAL LAND
MAJOR BRIDGE (20' TO 200' SPAN)	STATE OF MINNESOTA
MINOR BRIDGE (5' TO 20' SPAN)	COUNTY
	MUNICIPALITY
	UNORGANIZED TERRITORY
	FEDERAL ADJUSTED URBAN AREA (2014)
DAM	CIVIL TOWNSHIP
LOCK AND DAM	CONGRESSIONAL TOWNSHIP
CITY CENTERS	
STATE CAPITAL	SECTION
COUNTY SEAT	MILITARY
CITY CENTER	VOYAGEURS NATIONAL PARK
UNINCORPORATED COMMUNITY	BOUNDARY WATERS CANOE AREA WILDERNESS
PUBLIC SERVICE FEATURES	
MNDOT OFFICE	STATE PARK
MNDOT TRUCK STATION	REGIONAL PARK
HIGHWAY PATROL DISTRICT OFFICE	NATIONAL FOREST
STATE TRAVEL INFORMATION CENTER	NATIONAL AND STATE FOREST
REST AREA (FULL SERVICE)	STATE FOREST
REST AREA (VAULT TOILET)	NATIONAL TRAIL
WAYSIDE (VAULT OR PITY TOILET)	WILDLIFE REFUGUE AREA
PARK AND RIDE LOT	WILDLIFE MANAGEMENT AREA
PORT OF ENTRY	HYDROLOGIC FEATURES
PUBLIC ACCESS POINT	RIVER OR STREAM (PERMANENT)
MN STATE COLLEGE AND UNIVERSITY SYSTEM (MNSCU)	LAKE, POND OR RESERVOIR
UNIVERSITY OF MN SYSTEM	STREAM (INTERMITTENT)
FARMGROUNDS	DRAINAGE DITCH
CULTURAL FEATURES	
STATE HISTORICAL MARKER	HISTORIC DISTRICT
HISTORIC DISTRICT	HISTORIC SITE
HISTORIC SITE	MONUMENT
	WETLAND
	ISLAND OR LAND
	REGIONAL WATERSHED



Population (U.S. Census 2010): 1683

To request information from this document in an alternative format, call 651-366-4718 or 1-800-657-3774 (Greater Minnesota); 711 or 1-800-627-3529 (Minnesota Relay). You may also send an e-mail to ADRequest.dot@state.mn.us. (Please request at least one week in advance.)