

TOWNSHIP OF STURGEON

PREPARED BY THE
MINNESOTA DEPARTMENT OF TRANSPORTATION
OFFICE OF TRANSPORTATION SYSTEM MANAGEMENT

IN COOPERATION WITH
U.S. DEPARTMENT OF TRANSPORTATION
FEDERAL HIGHWAY ADMINISTRATION



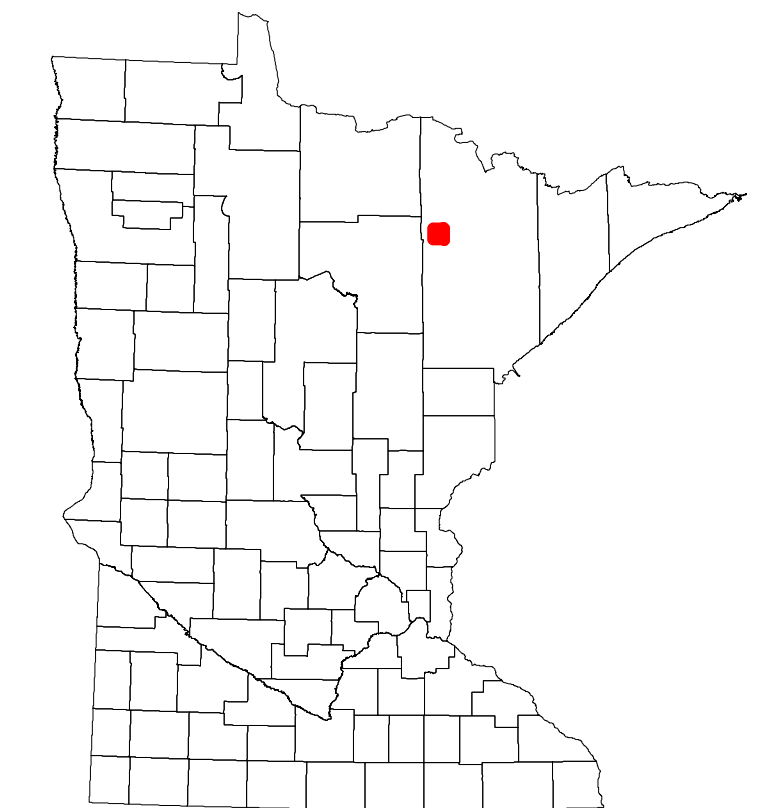
2023

Projection:
Transverse Mercator
NAD 1986
UTM Zone 15

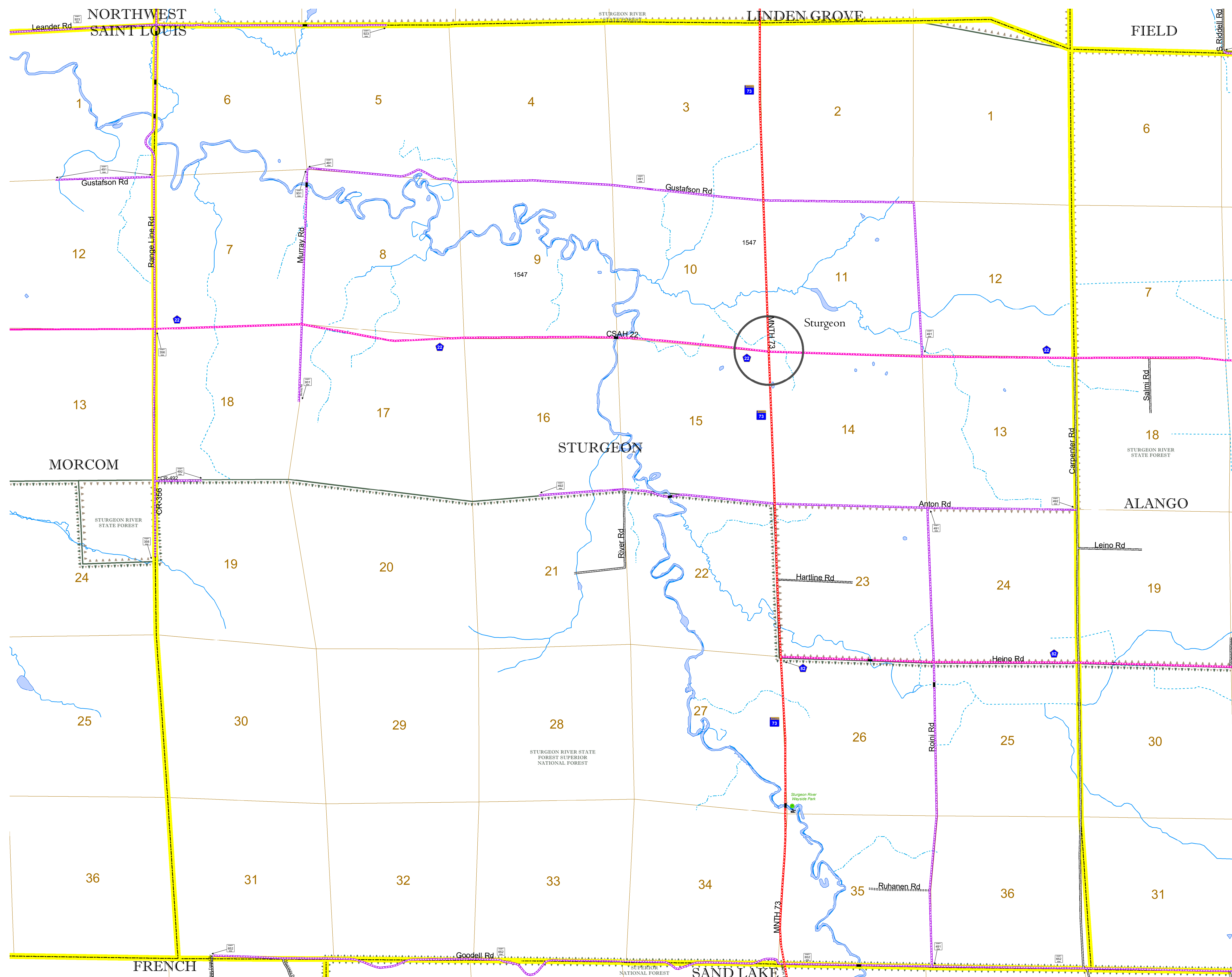


North American Datum
of 1986

ROAD AND ROADWAY FEATURES		AVIATION FEATURES		
INTERSTATE	CONCRETE	COMMERCIAL AIRPORT	GENERAL AIRPORT	
US HIGHWAY	BITUMINOUS	AIRSTRIP	SEAPLANE	
MN HIGHWAY	GRAVEL	AIRPORT RUNWAY		
COUNTY STATE AID HIGHWAY	DIRT/UNIMPROVED			
COUNTY ROAD	OTHER			
TOWNSHIP ROAD	UNKNOWN			
UNORGANIZED TERRITORY ROAD				
OTHER ROADS				
Municipal	RAMP OR CONNECTOR			
Private	INTERSTATE EXIT			
National Monument				
National Park				
National Wildlife Refuge				
State Game				
National Forest				
State Park				
Preserve				
RAILROAD AND RAILWAY FEATURES		BOUNDARY FEATURES		
EMPIRE BUILDER STATION (AMTRAK)	TRIBAL LAND	STATE OF MINNESOTA	COUNTY	
NORTHSTAR STATION (COMMUTER)		MUNICIPALITY	UNORGANIZED TERRITORY	
		FEDERAL ADJUSTED URBAN AREA (2014)	CIVIL TOWNSHIP	
			CONGRESSIONAL TOWNSHIP	
			SECTION	
			MILITARY	
			VOYAGEURS NATIONAL PARK	
			BOUNDARY WATERS NATIONAL PARK	
			STATE PARK	
			REGIONAL PARK	
			NATIONAL FOREST	
			NATIONAL AND STATE FOREST	
			STATE FOREST	
			NATIONAL TRAIL	
			WILDLIFE REFUGUE AREA	
			WILDLIFE MANAGEMENT AREA	
			HYDROLOGIC FEATURES	
			RIVER OR STREAM (PERENNIAL)	
			LAKE, POND OR RESERVOIR	
			STREAM (INTERMITTENT)	
			DRAINAGE DITCH	
			WETLAND	
			ISLAND OR LAND	
			REGIONAL WATERSHED	



Population (U.S. Census 2010): 140



To request information from this document in an alternative format, call 651-366-4718 or 1-800-657-3774 (Greater Minnesota); 711 or 1-800-627-3529 (Minnesota Relay). You may also send an e-mail to ADarequest.dot@state.mn.us. (Please request at least one week in advance.)