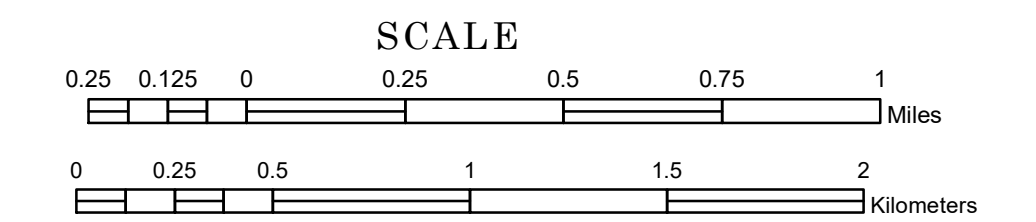


# TOWNSHIP OF HENDERSON

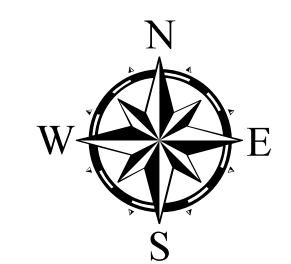
PREPARED BY THE  
MINNESOTA DEPARTMENT OF TRANSPORTATION  
OFFICE OF TRANSPORTATION SYSTEM MANAGEMENT

IN COOPERATION WITH  
U.S. DEPARTMENT OF TRANSPORTATION  
FEDERAL HIGHWAY ADMINISTRATION



1 in = 1,600 ft

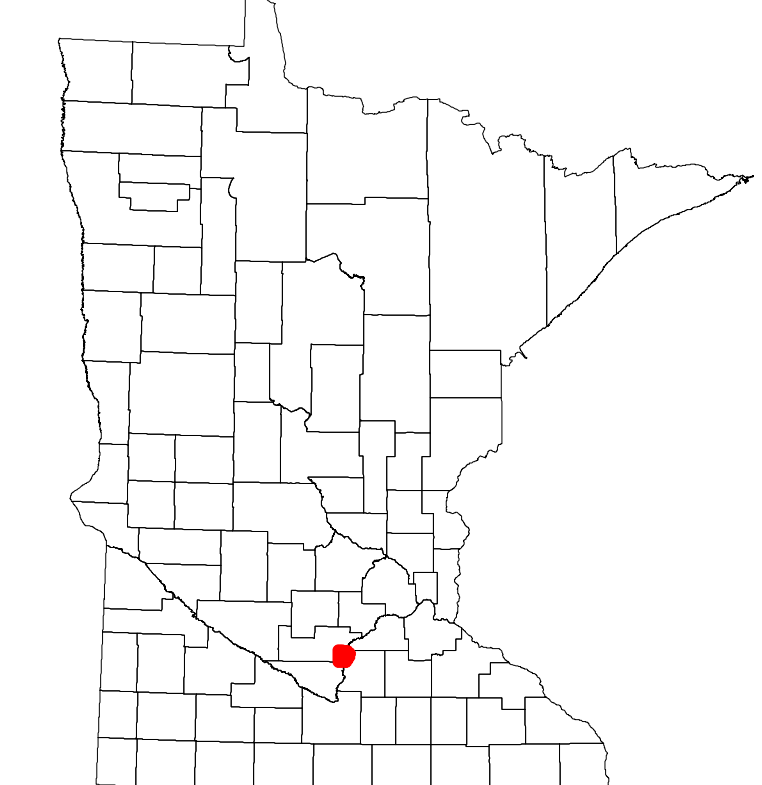
2023



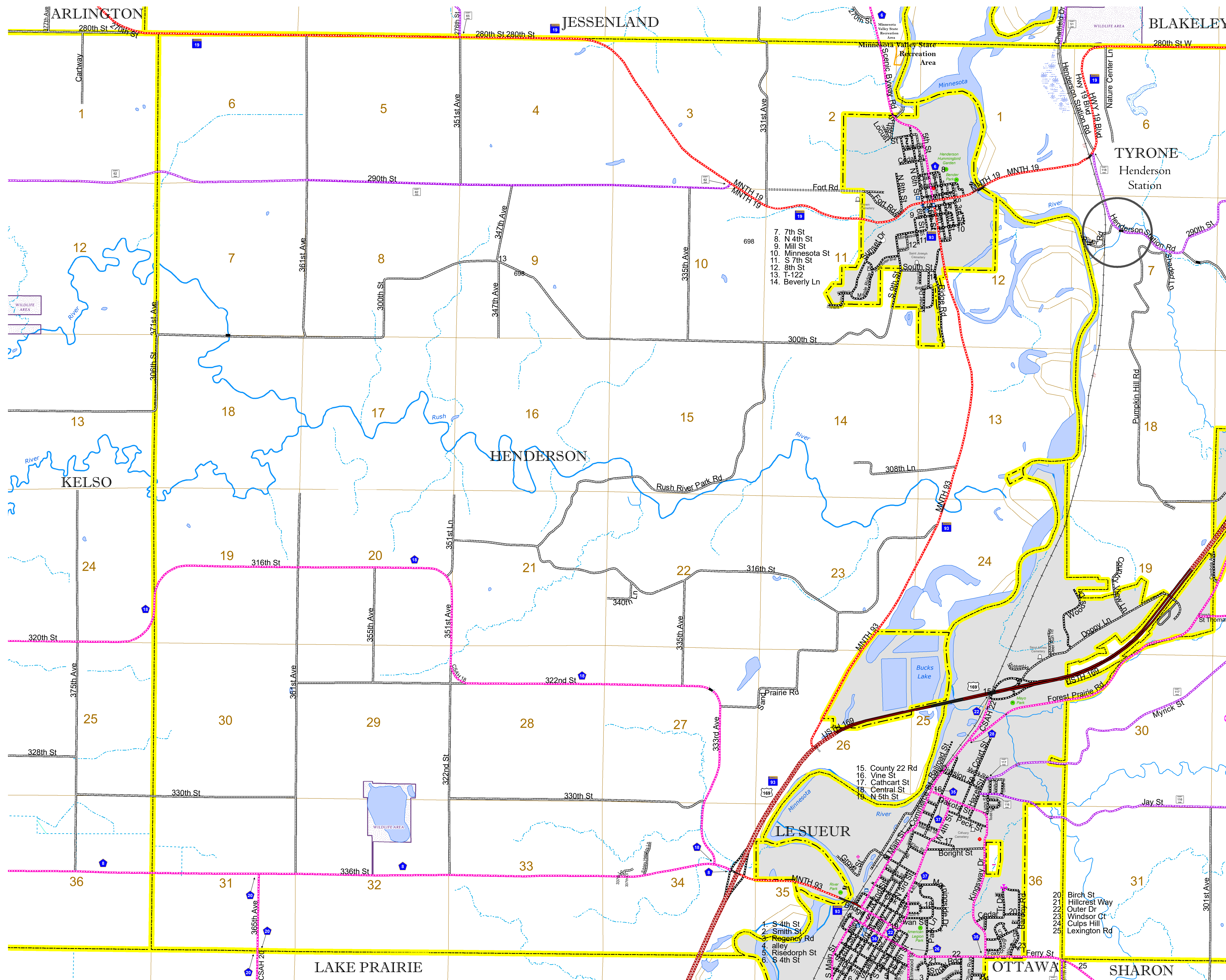
Projection:  
Transverse Mercator  
NAD 1986  
UTM Zone 15

North American Datum  
of 1986

ROAD AND ROADWAY FEATURES		BOUNDARY FEATURES	
INTERSTATE	CONCRETE	TRIBAL LAND	STATE OF MINNESOTA
US HIGHWAY	BITUMINOUS	COUNTY	MUNICIPALITY
MN HIGHWAY	GRAVEL	UNORGANIZED TERRITORY	FEDERAL ADJUSTED URBAN AREA (2014)
COUNTY STATE AID HIGHWAY	DIRT/UNIMPROVED	CIVIL TOWNSHIP	CONGRESSIONAL TOWNSHIP
COUNTY ROAD	OTHER	SECTION	MILITARY
TOWNSHIP ROAD	UNKNOWN	VOYAGEURS NATIONAL PARK	BOUNDARY WATERS CANOE AREA WILDERNESS
UNORGANIZED TERRITORY ROAD	RAMP OR CONNECTOR	STATE PARK	NATIONAL FOREST
OTHER ROADS:	INTERSTATE EXIT	NATIONAL AND STATE FOREST	STATE FOREST
Municipal	AVIATION FEATURES	WILDLIFE REFUGUE AREA	WILDLIFE MANAGEMENT AREA
Private	COMMERCIAL AIRPORT	WILDLIFE REFUGUE AREA	WILDLIFE MANAGEMENT AREA
National Monument	GENERAL AIRPORT	HYDROLOGIC FEATURES	HYDROLOGIC FEATURES
National Wildlife Refuge	AIRSTRIP	RIVER OR STREAM (PERMANENT)	LAKE, POND OR RESERVOIR
Military	SEAPLANE	STREAM (INTERMITTENT)	DRAINAGE DITCH
Preserve	AIRPORT RUNWAY	WETLAND	ISLAND OR LAND
State Park	AVIATION FEATURES	REGIONAL WATERSHED	REGIONAL WATERSHED
State Park	GENERAL AIRPORT		
State Park	AIRSTRIP		
State Park	SEAPLANE		
State Park	AIRPORT RUNWAY		
State Park	TRIBAL LAND		
State Park	STATE OF MINNESOTA		
State Park	COUNTY		
State Park	MUNICIPALITY		
State Park	UNORGANIZED TERRITORY		
State Park	FEDERAL ADJUSTED URBAN AREA (2014)		
State Park	CIVIL TOWNSHIP		
State Park	CONGRESSIONAL TOWNSHIP		
State Park	SECTION		
State Park	MILITARY		
State Park	VOYAGEURS NATIONAL PARK		
State Park	BOUNDARY WATERS CANOE AREA WILDERNESS		
State Park	STATE PARK		
State Park	NATIONAL FOREST		
State Park	NATIONAL AND STATE FOREST		
State Park	STATE FOREST		
State Park	WILDLIFE REFUGUE AREA		
State Park	WILDLIFE MANAGEMENT AREA		
State Park	HYDROLOGIC FEATURES		
State Park	RIVER OR STREAM (PERMANENT)		
State Park	LAKE, POND OR RESERVOIR		
State Park	STREAM (INTERMITTENT)		
State Park	DRAINAGE DITCH		
State Park	WETLAND		
State Park	ISLAND OR LAND		
State Park	REGIONAL WATERSHED		



Population (U.S. Census 2010): 728



To request information from this document in an alternative format, call 651-366-4718 or 1-800-657-3774 (Greater Minnesota); 711 or 1-800-627-3529 (Minnesota Relay). You may also send an e-mail to ADarequest.dot@state.mn.us. (Please request at least one week in advance.)