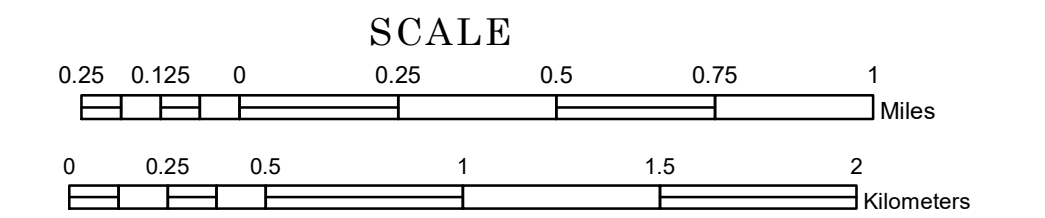


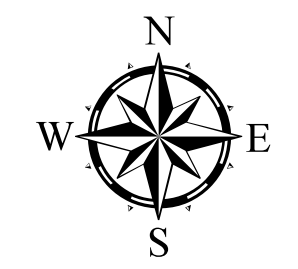
# TOWNSHIP OF COLLEGEVILLE

PREPARED BY THE  
MINNESOTA DEPARTMENT OF TRANSPORTATION  
OFFICE OF TRANSPORTATION SYSTEM MANAGEMENT

IN COOPERATION WITH  
U.S. DEPARTMENT OF TRANSPORTATION  
FEDERAL HIGHWAY ADMINISTRATION



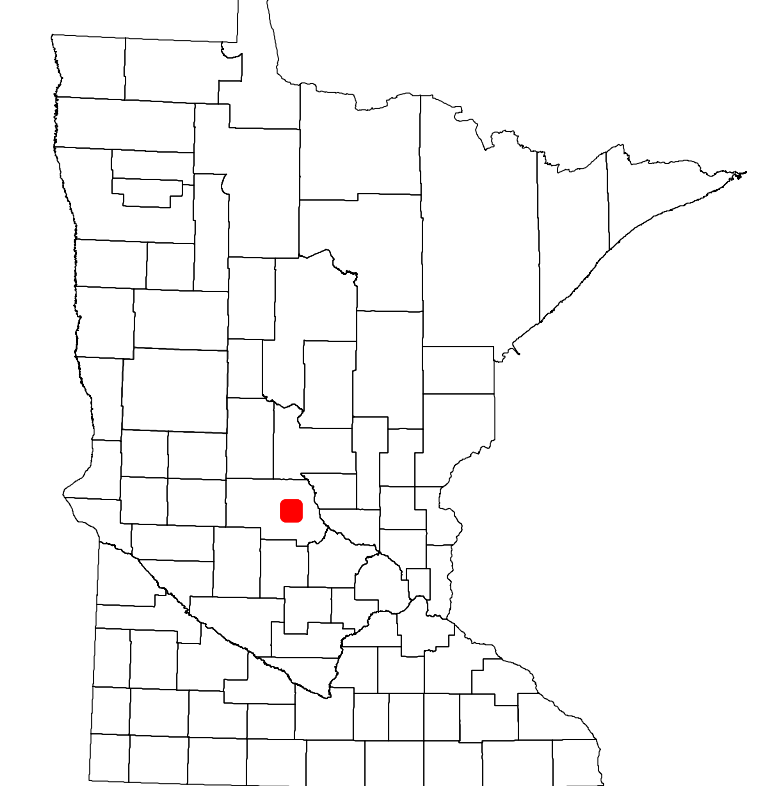
1 in = 1,600 ft  
**2024**



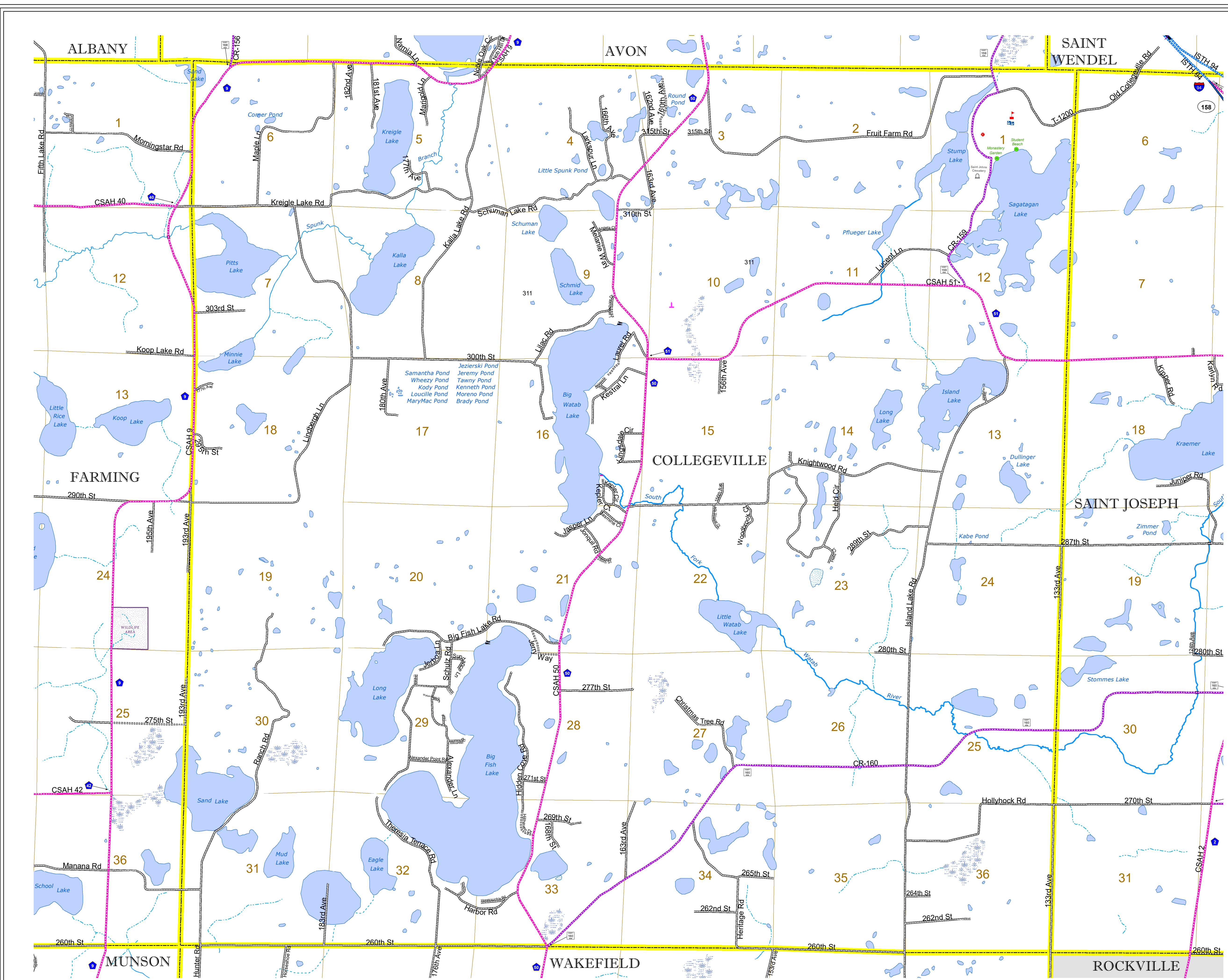
Projection:  
Transverse Mercator  
NAD 1986  
UTM Zone 15

North American Datum  
of 1986

ROAD AND ROADWAY FEATURES		AVIATION FEATURES	
INTERSTATE	CONCRETE	COMMERCIAL AIRPORT	GENERAL AIRPORT
US HIGHWAY	BITUMINOUS	AIRSTRIP	SEAPLANE
MN HIGHWAY	GRAVEL	AIRPORT RUNWAY	AIRPORT RUNWAY
COUNTY STATE AID HIGHWAY	DIRT/UNIMPROVED	BOUNDARY FEATURES	TRIBAL LAND
COUNTY ROAD	OTHER	STATE OF MINNESOTA	COUNTY
TOWNSHIP ROAD	UNKNOWN	MUNICIPALITY	MUNICIPALITY
UNORGANIZED TERRITORY ROAD		UNORGANIZED TERRITORY	UNORGANIZED TERRITORY
OTHER ROADS		FEDERAL ADJUSTED URBAN AREA (2014)	CIVIL TOWNSHIP
Municipal	RAMP OR CONNECTOR	CONGRESSIONAL TOWNSHIP	SECTION
Private	INTERSTATE EXIT	MILITARY	VOYAGEURS NATIONAL PARK
National Monument	AVIATION FEATURES	VOYAGEURS NATIONAL PARK	BOUNDARY WATERS CANOE AREA WILDERNESS
National Park	STATE OF MINNESOTA	STATE PARK	STATE PARK
National Wildlife Refuge	COUNTY	NATIONAL FOREST	NATIONAL FOREST
State Park	MUNICIPALITY	NATIONAL AND STATE FOREST	NATIONAL AND STATE FOREST
Present	UNORGANIZED TERRITORY	STATE FOREST	STATE FOREST
	FEDERAL ADJUSTED URBAN AREA (2014)	NATIONAL TRAIL	NATIONAL TRAIL
	CIVIL TOWNSHIP	WILDLIFE REFUGE AREA	WILDLIFE REFUGE AREA
	SECTION	WILDLIFE MANAGEMENT AREA	WILDLIFE MANAGEMENT AREA
	MILITARY	HYDROLOGIC FEATURES	HYDROLOGIC FEATURES
	VOYAGEURS NATIONAL PARK	RIVER OR STREAM (PERMANENT)	RIVER OR STREAM (PERMANENT)
	BOUNDARY WATERS CANOE AREA WILDERNESS	LAKE, POND OR RESERVOIR	LAKE, POND OR RESERVOIR
	STATE PARK	STREAM (INTERMITTENT)	STREAM (INTERMITTENT)
	NATIONAL FOREST	DRAINAGE DITCH	DRAINAGE DITCH
	NATIONAL AND STATE FOREST	WETLAND	WETLAND
	STATE FOREST	ISLAND OR LAND	ISLAND OR LAND
	NATIONAL TRAIL	REGIONAL WATERSHED	REGIONAL WATERSHED
	WILDLIFE REFUGE AREA		
	WILDLIFE MANAGEMENT AREA		
	HYDROLOGIC FEATURES		
	RIVER OR STREAM (PERMANENT)		
	LAKE, POND OR RESERVOIR		
	STREAM (INTERMITTENT)		
	DRAINAGE DITCH		
	WETLAND		
	ISLAND OR LAND		
	REGIONAL WATERSHED		



Population (U.S. Census 2010): 3343



To request information from this document in an alternative format, call 651-366-4718 or 1-800-657-3774 (Greater Minnesota); 711 or 1-800-627-3529 (Minnesota Relay). You may also send an e-mail to ADRequest.dot@state.mn.us. (Please request at least one week in advance.)