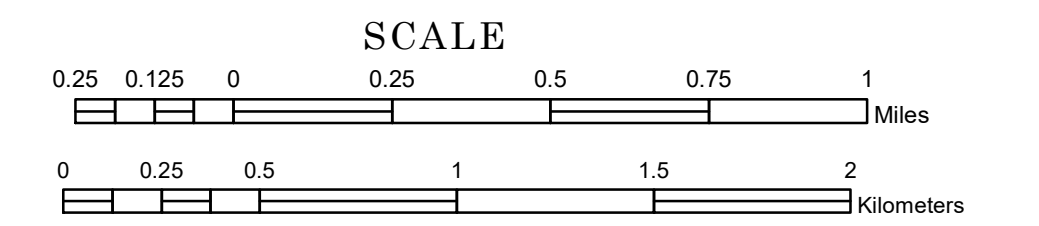


TOWNSHIP OF LAKE HENRY

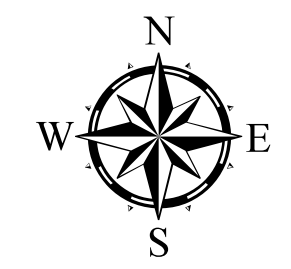
PREPARED BY THE
MINNESOTA DEPARTMENT OF TRANSPORTATION
OFFICE OF TRANSPORTATION SYSTEM MANAGEMENT

IN COOPERATION WITH
U.S. DEPARTMENT OF TRANSPORTATION
FEDERAL HIGHWAY ADMINISTRATION



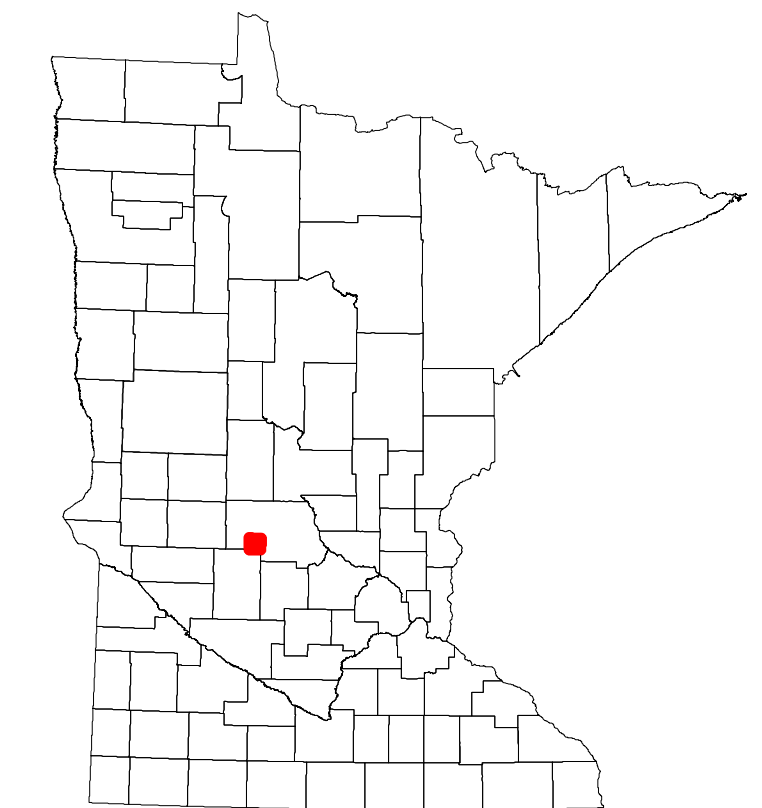
2024

Projection:
Transverse Mercator
NAD 1986
UTM Zone 15

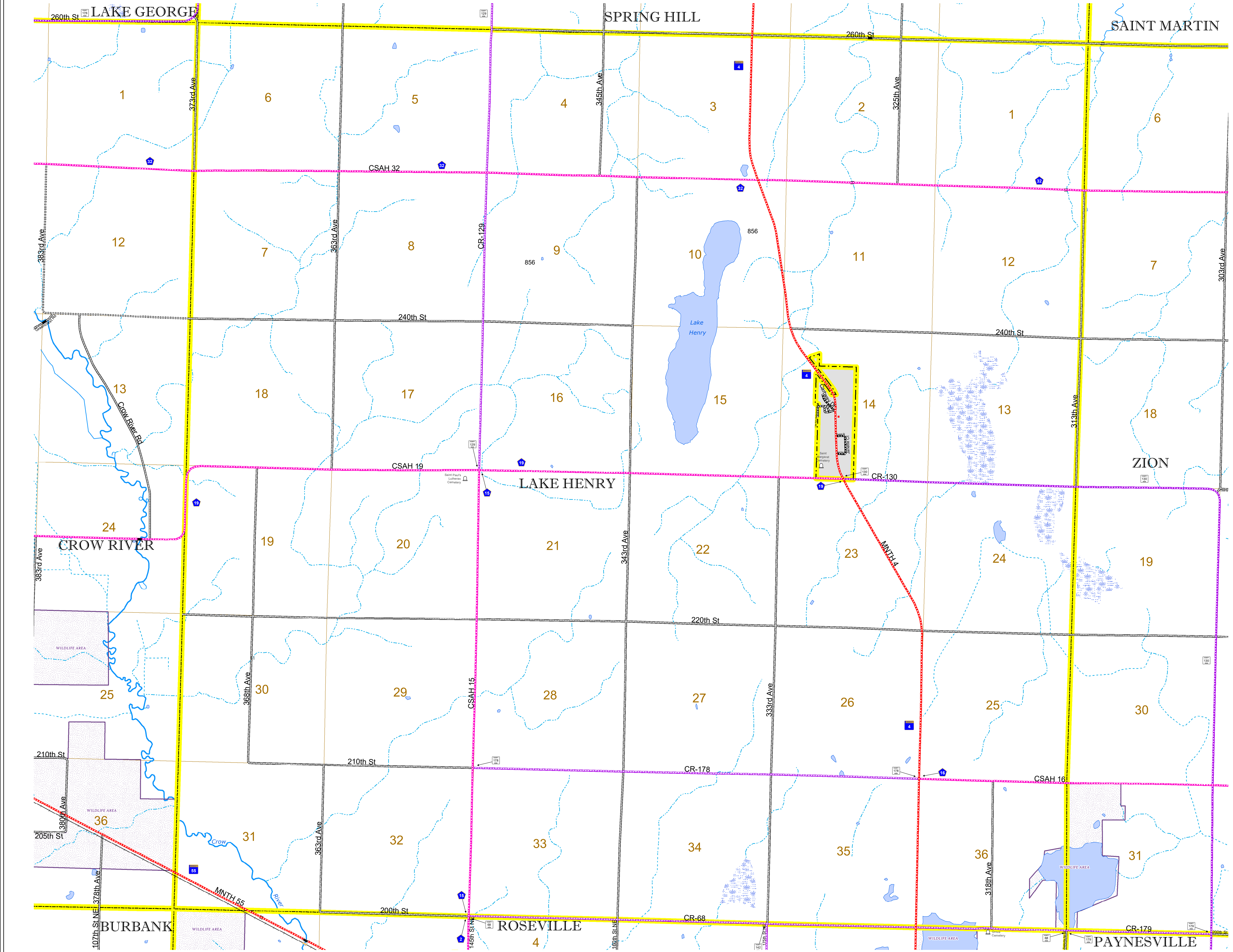


North American Datum
of 1986

ROAD AND ROADWAY FEATURES		BOUNDARY FEATURES	
INTERSTATE	CONCRETE	TRIBAL LAND	STATE OF MINNESOTA
US HIGHWAY	BITUMINOUS	COUNTY	MUNICIPALITY
MN HIGHWAY	GRAVEL	UNINCORPORATED TOWNSHIP	CONGRESSIONAL TOWNSHIP
COUNTY STATE AID HIGHWAY	DIRT/UNIMPROVED	SECTION	MILITARY
COUNTY ROAD	OTHER	VOYAGEURS NATIONAL PARK	BOUNDARY WATERS GANOE AREA WILDERNESS
TOWNSHIP ROAD	UNKNOWN	STATE PARK	NATIONAL FOREST
UNORGANIZED TERRITORY ROAD		NATIONAL AND STATE FOREST	STATE FOREST
OTHER ROADS		NATIONAL TRAIL	NATIONAL WILDLIFE REFUGUE AREA
Municipal	RAMP OR CONNECTOR	WILDLIFE MANAGEMENT AREA	WILDLIFE REFUGUE AREA
Private	INTERSTATE EXIT	WILDLIFE REFUGUE AREA	WILDLIFE REFUGUE AREA
National Monument	GREAT RIVER ROAD	WILDLIFE REFUGUE AREA	WILDLIFE REFUGUE AREA
National Park		WILDLIFE REFUGUE AREA	WILDLIFE REFUGUE AREA
National Wildlife Refuge		WILDLIFE REFUGUE AREA	WILDLIFE REFUGUE AREA
State Game		WILDLIFE REFUGUE AREA	WILDLIFE REFUGUE AREA
State Park		WILDLIFE REFUGUE AREA	WILDLIFE REFUGUE AREA
Present		WILDLIFE REFUGUE AREA	WILDLIFE REFUGUE AREA
		WILDLIFE REFUGUE AREA	WILDLIFE REFUGUE AREA
RAILROAD AND RAILWAY FEATURES		AVIATION FEATURES	
EMPIRE BUILDER STATION (AMTRAK)	COMMERCIAL AIRPORT	GENERAL AIRPORT	
NORTHSTAR STATION (COMPUTER)	AIRSTRIP	AIRSTRIP	
LIGHT RAIL	SEAPLANE	SEAPLANE	
BLUE LINE	AIRPORT RUNWAY	AIRPORT RUNWAY	
GREEN LINE			
INFRASTRUCTURE FEATURES		HYDROLOGIC FEATURES	
LONG BRIDGE (300' or Greater Span)	TRIAL LAND	LAKE, POND OR RESERVOIR	
MAJOR BRIDGE (20' to 300' Span)	COUNTY	STREAM (PERMANENT)	
MINOR BRIDGE (5' to 20' Span)	MUNICIPALITY	DRAINAGE DITCH	
DAM	UNINCORPORATED TOWNSHIP	WETLAND	
LOCK AND DAM	FEDERAL ADJUSTED URBAN AREA (2014)	ISLAND OR LAND	
	CITY TOWNSHIP	REGIONAL WATERSHED	
CITY CENTERS			
STATE CAPITAL	COUNTY SEAT		
CITY CENTER	UNINCORPORATED COMMUNITY		
PUBLIC SERVICE FEATURES			
MNDOT OFFICE			
MNDOT TRUCK STATION			
HIGHWAY PATROL DISTRICT OFFICE			
STATE TRAVEL INFORMATION CENTER			
REST AREA (Full Service)			
REST AREA (Vault Toilet)			
WAYSIDE (Vault or Pit Toilet)			
PARK AND RIDE LOT			
PORT OF ENTRY			
PUBLIC ACCESS POINT			
MN STATE COLLEGE AND UNIVERSITY SYSTEM (MNSCU)			
UNIVERSITY OF MN SYSTEM			
FARMS			
CULTURAL FEATURES			
STATE HISTORICAL MARKER			
HISTORIC DISTRICT			
HISTORIC SITE			
MONUMENT			



Population (U.S. Census 2010): 278



To request information from this document in an alternative format, call 651-366-4718 or 1-800-657-3774 (Greater Minnesota); 711 or 1-800-627-3529 (Minnesota Relay). You may also send an e-mail to ADArequest.dot@state.mn.us. (Please request at least one week in advance.)