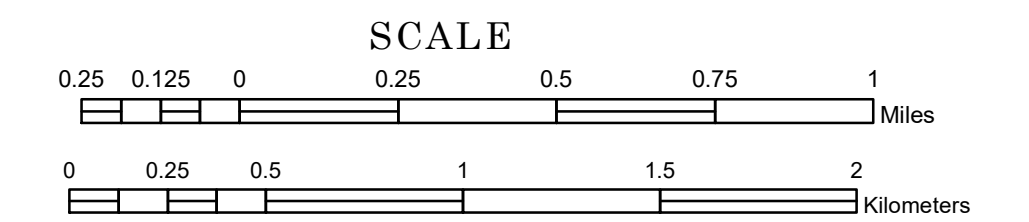


TOWNSHIP OF ELDORADO

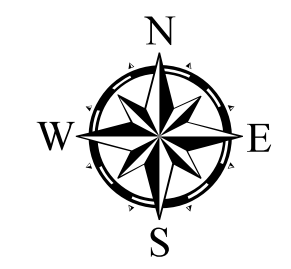
PREPARED BY THE
MINNESOTA DEPARTMENT OF TRANSPORTATION
OFFICE OF TRANSPORTATION SYSTEM MANAGEMENT

IN COOPERATION WITH
U.S. DEPARTMENT OF TRANSPORTATION
FEDERAL HIGHWAY ADMINISTRATION

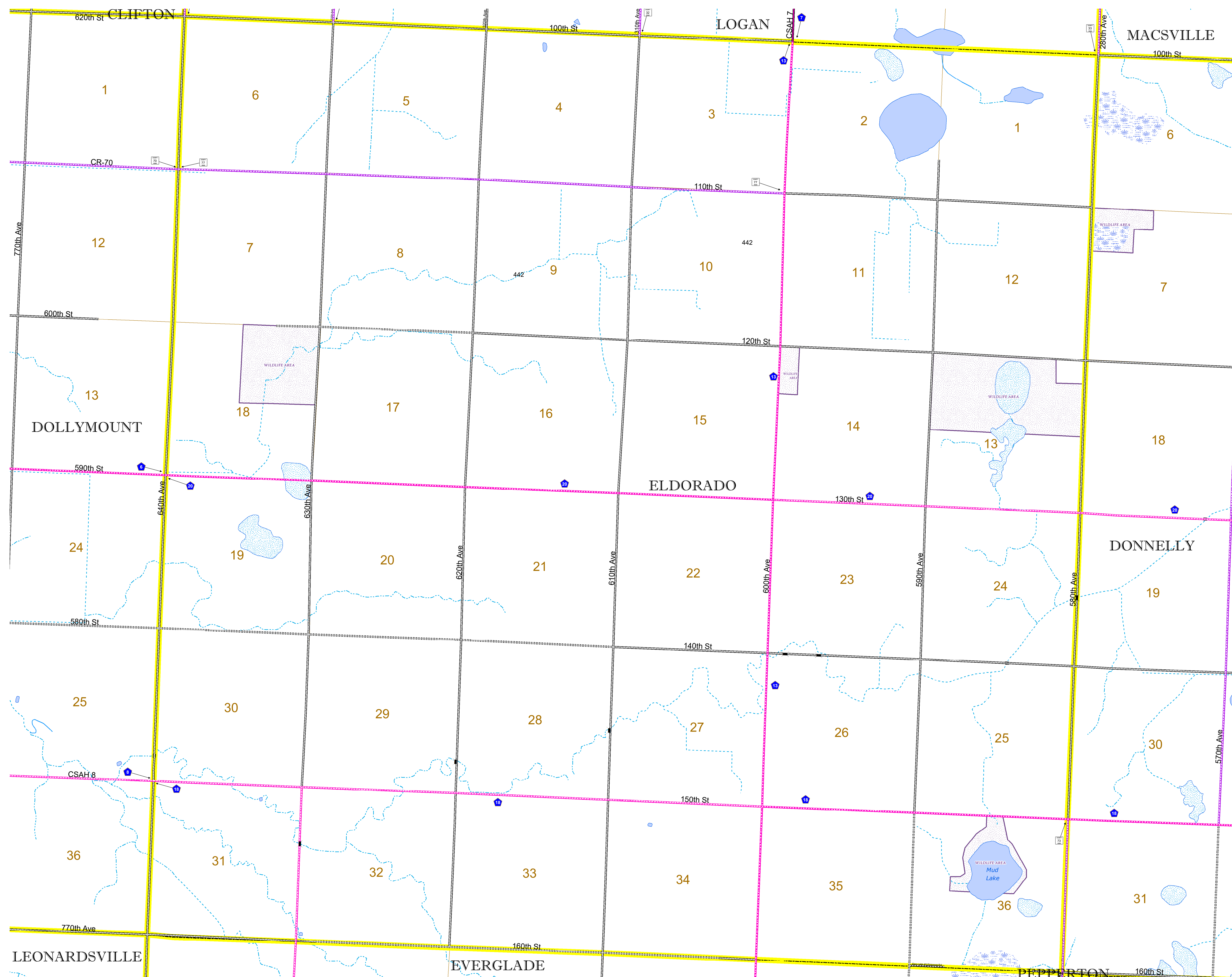


1 in = 1,600 ft
2024

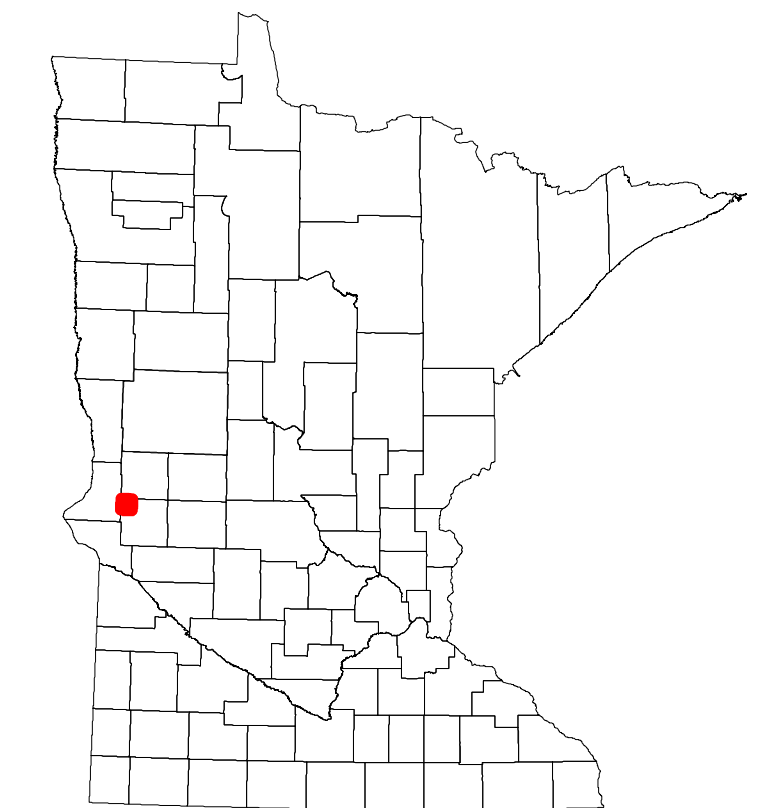
Projection:
Transverse Mercator
NAD 1986
UTM Zone 15



North American Datum
of 1986



ROAD AND ROADWAY FEATURES		AVIATION FEATURES		
INTERSTATE	CONCRETE	COMMERCIAL AIRPORT	GENERAL AIRPORT	
US HIGHWAY	BITUMINOUS	AIRSTRIP	SEAPLANE	
MN HIGHWAY	GRAVEL	AIRPORT RUNWAY		
COUNTY STATE AID HIGHWAY	DIRT/UNIMPROVED			
COUNTY ROAD	OTHER			
TOWNSHIP ROAD	UNKNOWN			
UNORGANIZED TERRITORY ROAD				
OTHER ROADS				
Municipal	RAMP OR CONNECTOR			
Private	INTERSTATE EXIT			
National Monument				
National Park				
National Wildlife				
State Game				
State Park				
Preserve				
RAILROAD AND RAILWAY FEATURES		BOUNDARY FEATURES		
EMPIRE BUILDER STATION (AMTRAK)	TRIBAL LAND	STATE OF MINNESOTA	COUNTY	
NORTHSTAR STATION (COMMUTER)		MUNICIPALITY	UNORGANIZED TERRITORY	
LIGHT RAIL		FEDERAL ADJUSTED URBAN AREA (2014)	CIVIL TOWNSHIP	
BLUE LINE			CONGRESSIONAL TOWNSHIP	
GREEN LINE			SECTION	
			MILITARY	
			VOYAGEURS NATIONAL PARK	
			BOUNDARY WATERS CANOE AREA WILDERNESS	
			STATE PARK	
			REGIONAL PARK	
			NATIONAL FOREST	
			NATIONAL AND STATE FOREST	
			STATE FOREST	
			WILDLIFE REFUGUE AREA	
			WILDLIFE MANAGEMENT AREA	
			HYDROLOGIC FEATURES	
			RIVER OR STREAM (PERENNIAL)	LAKE, POND OR RESERVOIR
			STREAM (INTERMITTENT)	DRAINAGE DITCH
				WETLAND
				ISLAND OR LAND
				REGIONAL WATERSHED
CITY CENTERS				
STATE CAPITAL	COUNTY SEAT	CITY CENTER	UNINCORPORATED COMMUNITY	
PUBLIC SERVICE FEATURES				
MNDOT OFFICE				
MNDOT TRUCK STATION				
HIGHWAY PATROL DISTRICT OFFICE				
STATE TRAVEL INFORMATION CENTER				
REST AREA (Full Service)				
REST AREA (Vault Toilet)				
WAYSIDE (Vault or Pit Toilet)				
PARK AND RIDE LOT				
PORT OF ENTRY				
PUBLIC ACCESS POINT				
MN STATE COLLEGE AND UNIVERSITY SYSTEM (MNSCU)				
UNIVERSITY OF MN SYSTEM				
FAIRGROUNDS				
CULTURAL FEATURES				
STATE HISTORICAL MARKER				
HISTORIC DISTRICT				
HISTORIC SITE				
MONUMENT				



Population (U.S. Census 2010): 94

To request information from this document in an alternative format, call 651-366-4718 or 1-800-657-3774 (Greater Minnesota); 711 or 1-800-627-3529 (Minnesota Relay). You may also send an e-mail to ADRequest.dot@state.mn.us. (Please request at least one week in advance.)