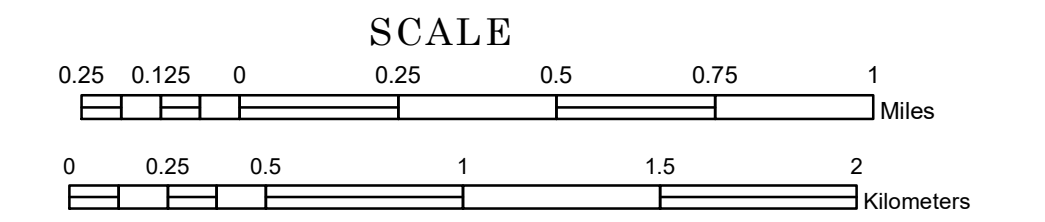


TOWNSHIP OF FRAMNAS

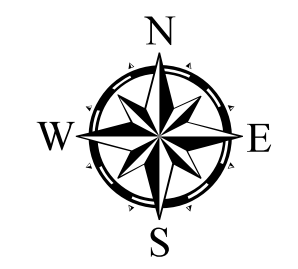
PREPARED BY THE
MINNESOTA DEPARTMENT OF TRANSPORTATION
OFFICE OF TRANSPORTATION SYSTEM MANAGEMENT

IN COOPERATION WITH
U.S. DEPARTMENT OF TRANSPORTATION
FEDERAL HIGHWAY ADMINISTRATION



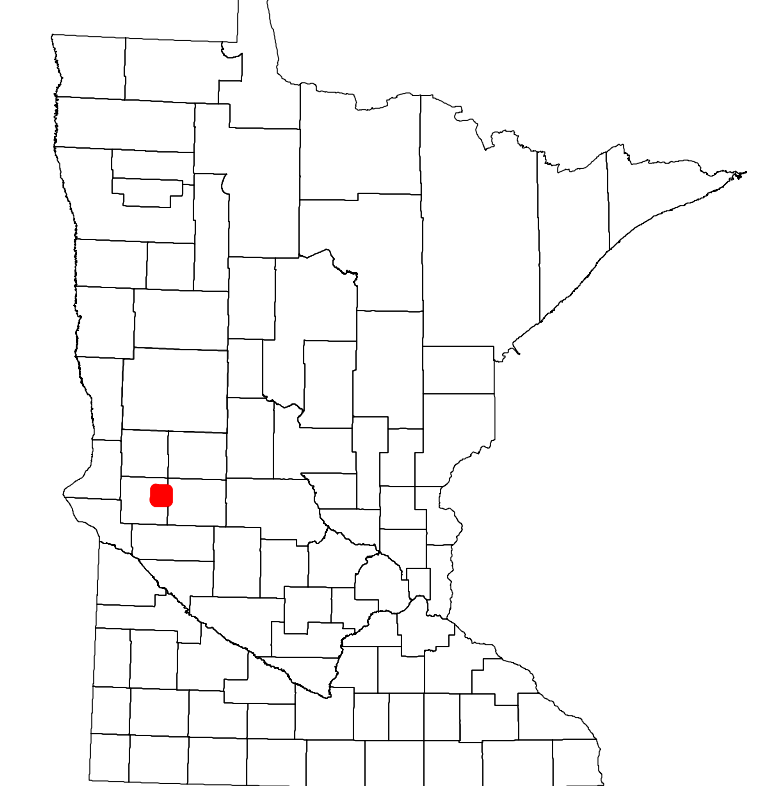
1 in = 1,600 ft
2024

Projection:
Transverse Mercator
NAD 1986
UTM Zone 15

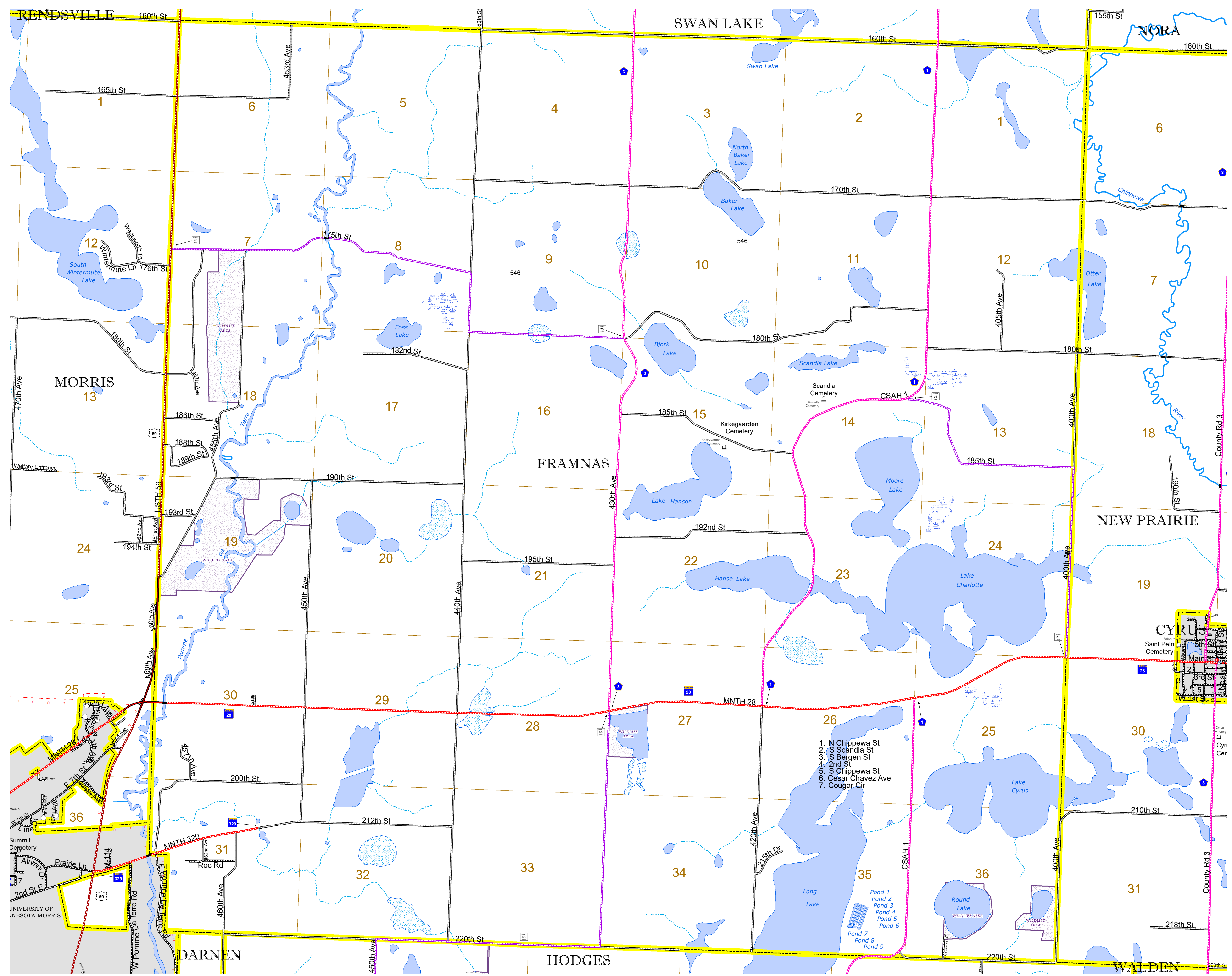


North American Datum
of 1986

ROAD AND ROADWAY FEATURES		BOUNDARY FEATURES	
INTERSTATE	CONCRETE	TRIAL LAND	TRIBAL LAND
US HIGHWAY	BITUMINOUS	STATE OF MINNESOTA	COUNTY
MN HIGHWAY	GRAVEL	MUNICIPALITY	MUNICIPALITY
COUNTY STATE AID HIGHWAY	DIRT/UNIMPROVED	UNORGANIZED TERRITORY	FEDERAL ADJUSTED URBAN AREA (2014)
COUNTY ROAD	OTHER	CIVIL TOWNSHIP	CONGRESSIONAL TOWNSHIP
TOWNSHIP ROAD	UNKNOWN	SECTION	MILITARY
UNORGANIZED TERRITORY ROAD		VOYAGEURS NATIONAL PARK	BOUNDARY WATERS CANOE AREA WILDERNESS
OTHER ROADS		STATE PARK	REGIONAL PARK
Municipal	Private	National Forest	National and State Forest
Nature Service	National Monument	State Forest	Wildlife Refuge Area
Mulvan	National Wildlife	Wildlife Management Area	Hydrologic Features
	State Game	River or Stream (Perennial)	Lake, Pond or Reservoir
	Preserve	Stream (Intermittent)	Drainage Ditch
	Pressure	Historic District	Wetland
		Historic Site	Island or Land
		Monument	Regional Watershed



Population (U.S. Census 2010): 305



1. N Chippewa St
2. S Scandia St
3. S Bergen St
4. 2nd St
5. S Chippewa St
6. Cesar Chavez Ave
7. Cougar Cir

To request information from this document in an alternative format, call 651-366-4718 or 1-800-657-3774 (Greater Minnesota); 711 or 1-800-627-3529 (Minnesota Relay). You may also send an e-mail to ADarequest.dot@state.mn.us. (Please request at least one week in advance.)