

TOWNSHIP OF SWAN LAKE

PREPARED BY THE
MINNESOTA DEPARTMENT OF TRANSPORTATION
OFFICE OF TRANSPORTATION SYSTEM MANAGEMENT

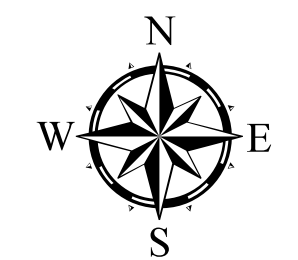
IN COOPERATION WITH
U.S. DEPARTMENT OF TRANSPORTATION
FEDERAL HIGHWAY ADMINISTRATION



1 in = 1,600 ft

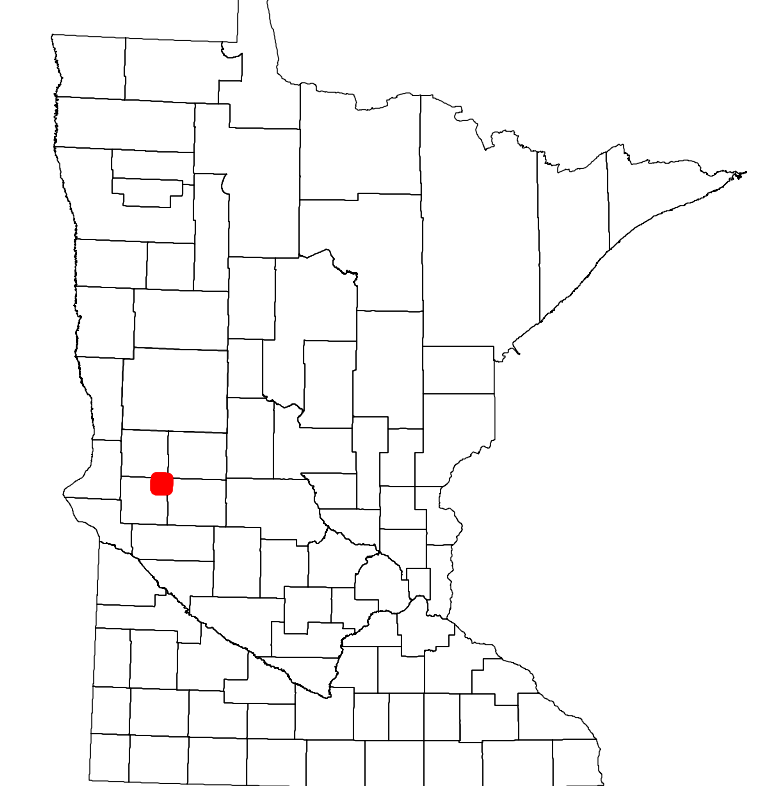
2024

Projection:
Transverse Mercator
NAD 1986
UTM Zone 15

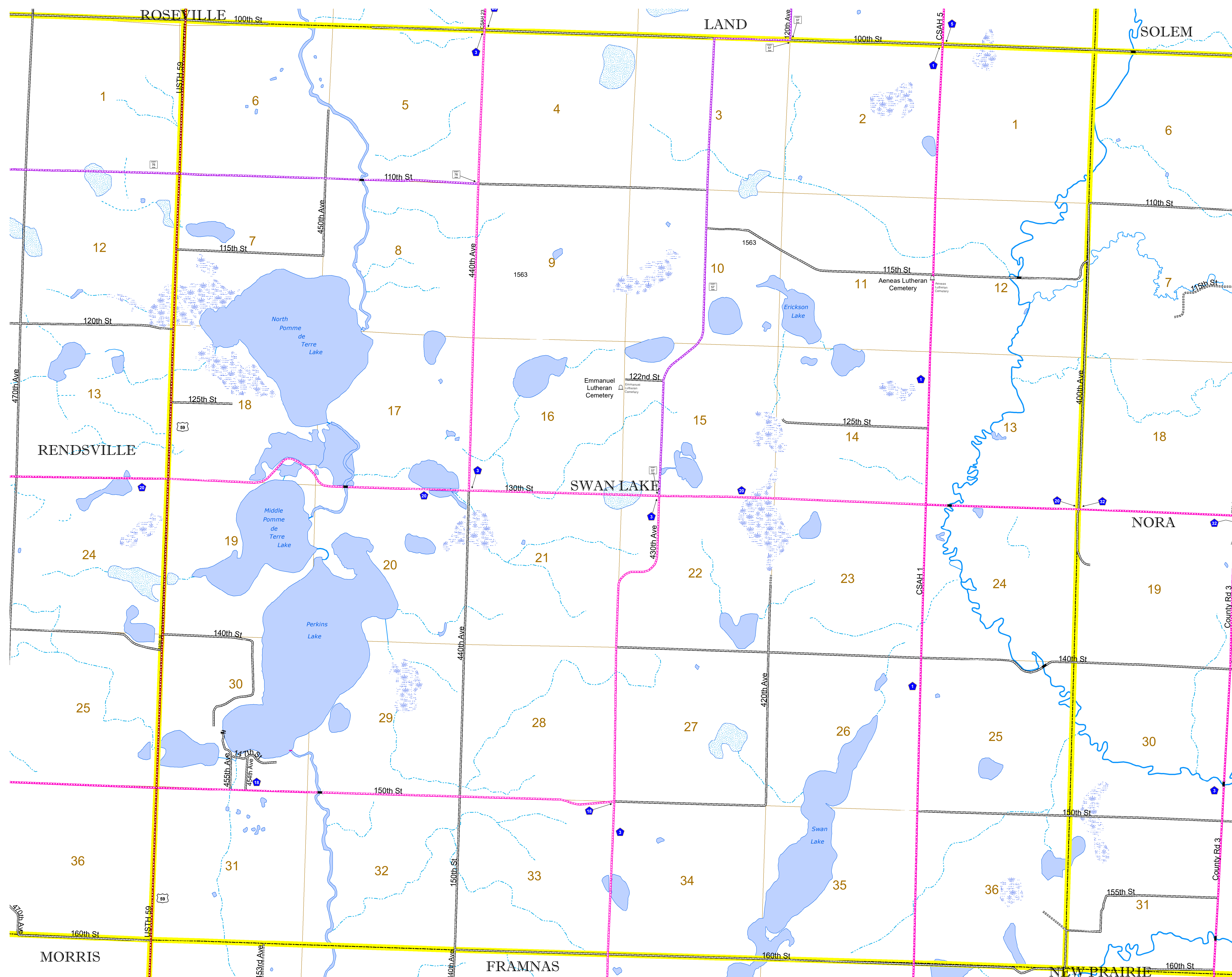


North American Datum
of 1986

ROAD AND ROADWAY FEATURES		BOUNDARY FEATURES	
INTERSTATE	CONCRETE	TRIBAL LAND	STATE OF MINNESOTA
US HIGHWAY	BITUMINOUS	COUNTY	MUNICIPALITY
MN HIGHWAY	GRAVEL	UNORGANIZED TERRITORY	FEDERAL ADJUSTED URBAN AREA (2014)
COUNTY STATE AID HIGHWAY	DIRT/UNIMPROVED	CIVIL TOWNSHIP	CONGRESSIONAL TOWNSHIP
COUNTY ROAD	OTHER	SECTION	MILITARY
TOWNSHIP ROAD	UNKNOWN	VOYAGEURS NATIONAL PARK	BOUNDARY WATERS CANOE AREA WILDERNESS
UNORGANIZED TERRITORY ROAD		STATE PARK	NATIONAL FOREST
OTHER ROADS		NATIONAL AND STATE FOREST	STATE FOREST
Municipal	RAMP OR CONNECTOR	WILDLIFE REFUGUE AREA	WILDLIFE MANAGEMENT AREA
Private	INTERSTATE EXIT	HYDROLOGIC FEATURES	RIVER OR STREAM (PERENNIAL)
National Monument	AVIATION FEATURES	LAKE, POND OR RESERVOIR	STREAM (INTERMITTENT)
National Wildlife Refuge	COMMERCIAL AIRPORT	DRAINAGE DITCH	WETLAND
State Park	GENERAL AIRPORT	ISLAND OR LAND	REGIONAL WATERSHED
Preserve	AIRSTRIP		
	SEAPLANE		
	AIRPORT RUNWAY		
RAILROAD AND RAILWAY FEATURES		CITY CENTERS	
EMPIRE BUILDER STATION (AMTRAK)	STATE CAPITAL	COUNTY SEAT	CITY CENTER
NORTHSTAR STATION (COMMUTER)	UNINCORPORATED COMMUNITY		
LIGHT RAIL			
BLUE LINE			
GREEN LINE			
INFRASTRUCTURE FEATURES		PUBLIC SERVICE FEATURES	
LONG BRIDGE (200' OR GREATER SPAN)	MNDOT OFFICE	HIGHWAY PATROL DISTRICT OFFICE	STATE TRAVEL INFORMATION CENTER
MAJOR BRIDGE (20' TO 200' SPAN)		REST AREA (FULL SERVICE)	REST AREA (VAULT TOILET)
MINOR BRIDGE (5' TO 20' SPAN)		WAYSIDE (VAULT OR PITY TOILET)	PARK AND RIDE LOT
DAM		PORT OF ENTRY	PUBLIC ACCESS POINT
LOCK AND DAM		MN STATE COLLEGE AND UNIVERSITY SYSTEM (MNSCU)	UNIVERSITY OF MN SYSTEM
		FAIRGROUNDS	
CITY CENTERS		CULTURAL FEATURES	
STATE CAPITAL	STATE HISTORICAL MARKER	HISTORIC DISTRICT	HISTORIC SITE
COUNTY SEAT			
CITY CENTER			
UNINCORPORATED COMMUNITY			



Population (U.S. Census 2010): 194



To request information from this document in an alternative format, call 651-366-4718 or 1-800-657-3774 (Greater Minnesota); 711 or 1-800-627-3529 (Minnesota Relay). You may also send an e-mail to ADRequest.dot@state.mn.us. (Please request at least one week in advance.)