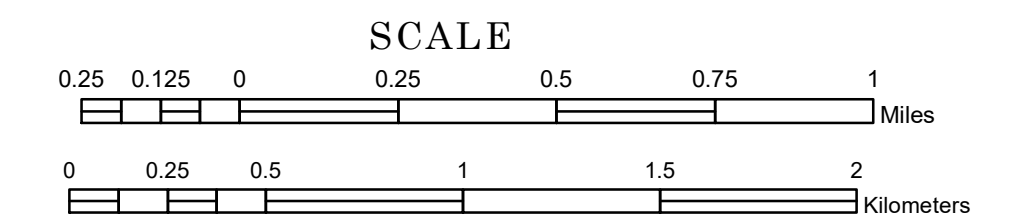


# TOWNSHIP OF BENSON

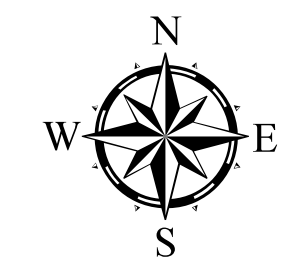
PREPARED BY THE  
MINNESOTA DEPARTMENT OF TRANSPORTATION  
OFFICE OF TRANSPORTATION SYSTEM MANAGEMENT

IN COOPERATION WITH  
U.S. DEPARTMENT OF TRANSPORTATION  
FEDERAL HIGHWAY ADMINISTRATION



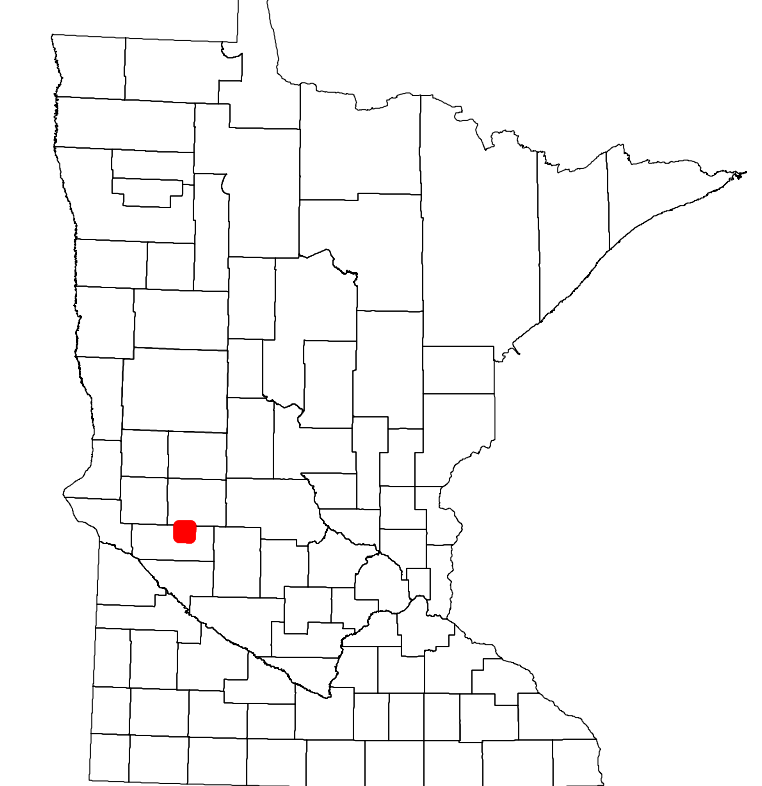
1 in = 1,600 ft  
**2024**

Projection:  
Transverse Mercator  
NAD 1986  
UTM Zone 15

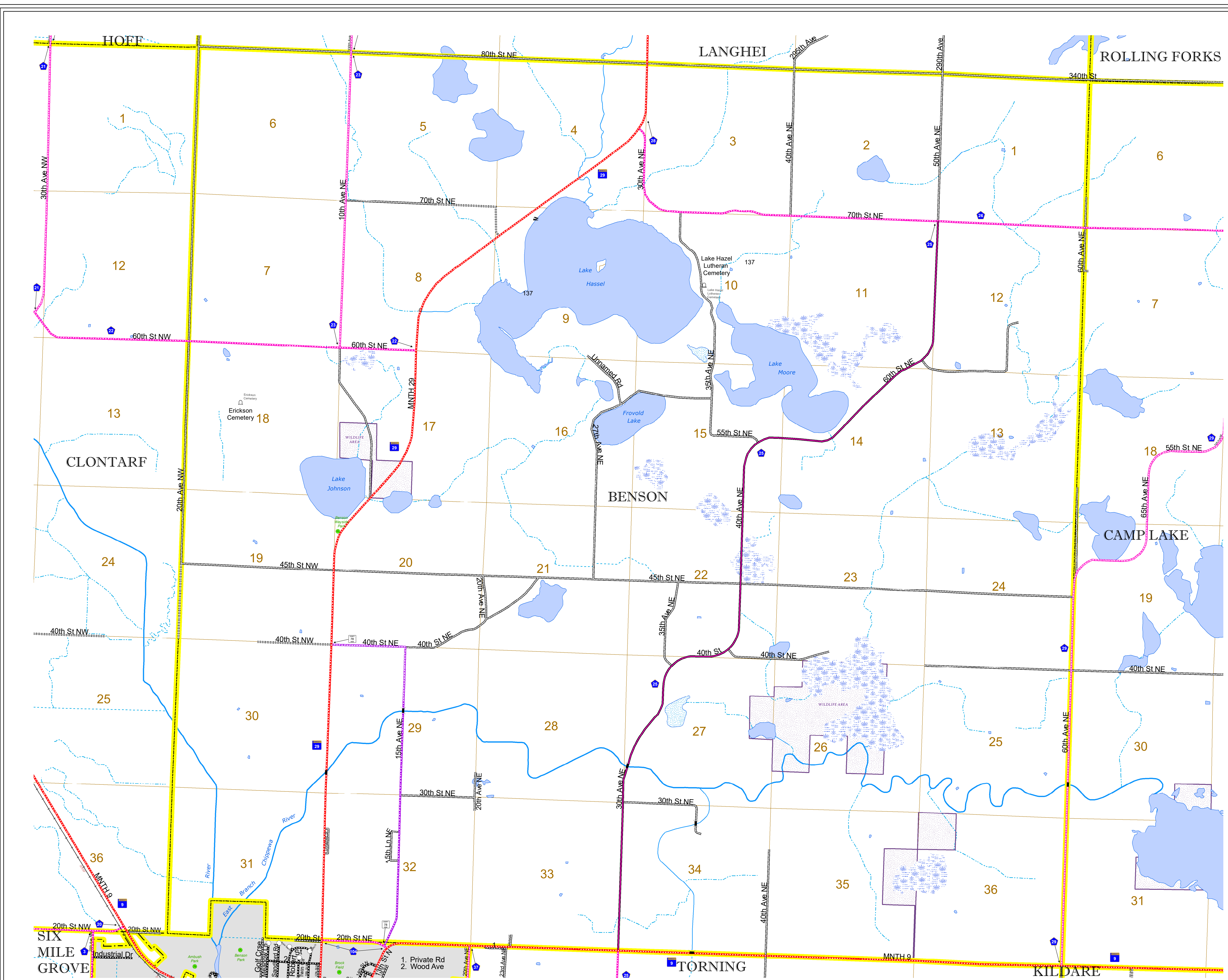


North American Datum  
of 1986

ROAD AND ROADWAY FEATURES		RAILROAD AND RAILWAY FEATURES		AVIATION FEATURES		BOUNDARY FEATURES	
INTERSTATE	[Symbol]	EMPIRE BUILDER STATION (AMTRAK)	[Symbol]	COMMERCIAL AIRPORT	[Symbol]	TRIBAL LAND	[Symbol]
US HIGHWAY	[Symbol]	NORTHSTAR STATION (COMPUTER)	[Symbol]	GENERAL AIRPORT	[Symbol]	STATE OF MINNESOTA	[Symbol]
MN HIGHWAY	[Symbol]	LIGHT RAIL	[Symbol]	AIRSTRIP	[Symbol]	COUNTY	[Symbol]
COUNTY STATE AID HIGHWAY	[Symbol]	BLUE LINE	[Symbol]	SEAPLANE	[Symbol]	MUNICIPALITY	[Symbol]
COUNTY ROAD	[Symbol]	GREEN LINE	[Symbol]	AIRPORT RUNWAY	[Symbol]	UNORGANIZED TERRITORY	[Symbol]
TOWNSHIP ROAD	[Symbol]	LONG BRIDGE (200' OR GREATER SPAN)	[Symbol]	RAILROAD AND RAILWAY FEATURES	[Symbol]	FEDERAL ADJUSTED URBAN AREA (2014)	[Symbol]
UNORGANIZED TERRITORY ROAD	[Symbol]	MAJOR BRIDGE (20' TO 200' SPAN)	[Symbol]	EMPIRE BUILDER STATION (AMTRAK)	[Symbol]	CIVIL TOWNSHIP	[Symbol]
OTHER ROADS	[Symbol]	MINOR BRIDGE (5' TO 20' SPAN)	[Symbol]	NORTHSTAR STATION (COMPUTER)	[Symbol]	CONGRESSIONAL TOWNSHIP	[Symbol]
MUNICIPAL	[Symbol]	DAM	[Symbol]	LIGHT RAIL	[Symbol]	SECTION	[Symbol]
PRIVATE	[Symbol]	LOCK AND DAM	[Symbol]	BLUE LINE	[Symbol]	MILITARY	[Symbol]
NATIONAL MONUMENT	[Symbol]	CITY CENTERS	[Symbol]	GREEN LINE	[Symbol]	VOYAGEURS NATIONAL PARK	[Symbol]
STATE FOREST	[Symbol]	STATE CAPITAL	[Symbol]	INFRASTRUCTURE FEATURES	[Symbol]	BOUNDARY WATERS CANOE AREA WILDERNESS	[Symbol]
STATE PARK	[Symbol]	LONG BRIDGE (200' OR GREATER SPAN)	[Symbol]	LONG BRIDGE (200' OR GREATER SPAN)	[Symbol]	STATE PARK	[Symbol]
STATE TRAIL	[Symbol]	MAJOR BRIDGE (20' TO 200' SPAN)	[Symbol]	MAJOR BRIDGE (20' TO 200' SPAN)	[Symbol]	REGIONAL PARK	[Symbol]
WILDLIFE REFUGE AREA	[Symbol]	MINOR BRIDGE (5' TO 20' SPAN)	[Symbol]	MINOR BRIDGE (5' TO 20' SPAN)	[Symbol]	NATIONAL FOREST	[Symbol]
WILDLIFE MANAGEMENT AREA	[Symbol]	DAM	[Symbol]	DAM	[Symbol]	NATIONAL AND STATE FOREST	[Symbol]
HYDROLOGIC FEATURES	[Symbol]	LOCK AND DAM	[Symbol]	LOCK AND DAM	[Symbol]	STATE FOREST	[Symbol]
RIVER OR STREAM (PERMANENT)	[Symbol]	CITY CENTERS	[Symbol]	STATE CAPITAL	[Symbol]	NATIONAL TRAIL	[Symbol]
LAKE, POND OR RESERVOIR	[Symbol]	STATE CAPITAL	[Symbol]	STATE CAPITAL	[Symbol]	WILDLIFE REFUGE AREA	[Symbol]
STREAM (INTERMITTENT)	[Symbol]	COUNTY SEAT	[Symbol]	COUNTY SEAT	[Symbol]	WILDLIFE MANAGEMENT AREA	[Symbol]
DRAINAGE DITCH	[Symbol]	CITY CENTER	[Symbol]	CITY CENTER	[Symbol]	HYDROLOGIC FEATURES	[Symbol]
WETLAND	[Symbol]	UNINCORPORATED COMMUNITY	[Symbol]	UNINCORPORATED COMMUNITY	[Symbol]	RIVER OR STREAM (PERMANENT)	[Symbol]
ISLAND OR LAND	[Symbol]	PUBLIC SERVICE FEATURES	[Symbol]	PUBLIC SERVICE FEATURES	[Symbol]	LAKE, POND OR RESERVOIR	[Symbol]
REGIONAL WATERSHED	[Symbol]	MNDOT OFFICE	[Symbol]	MNDOT OFFICE	[Symbol]	STREAM (INTERMITTENT)	[Symbol]
		MNDOT TRUCK STATION	[Symbol]	MNDOT TRUCK STATION	[Symbol]	DRAINAGE DITCH	[Symbol]
		HIGHWAY PATROL DISTRICT OFFICE	[Symbol]	HIGHWAY PATROL DISTRICT OFFICE	[Symbol]	WETLAND	[Symbol]
		STATE TRAVEL INFORMATION CENTER	[Symbol]	STATE TRAVEL INFORMATION CENTER	[Symbol]	ISLAND OR LAND	[Symbol]
		REST AREA (FULL SERVICE)	[Symbol]	REST AREA (FULL SERVICE)	[Symbol]	REGIONAL WATERSHED	[Symbol]
		REST AREA (VAULT TOILET)	[Symbol]	REST AREA (VAULT TOILET)	[Symbol]		
		WAYSIDE (VAULT OR PITY TOILET)	[Symbol]	WAYSIDE (VAULT OR PITY TOILET)	[Symbol]		
		PARK AND RIDE LOT	[Symbol]	PARK AND RIDE LOT	[Symbol]		
		PORT OF ENTRY	[Symbol]	PORT OF ENTRY	[Symbol]		
		PUBLIC ACCESS POINT	[Symbol]	PUBLIC ACCESS POINT	[Symbol]		
		MN STATE COLLEGE AND UNIVERSITY SYSTEM (MNSCU)	[Symbol]	MN STATE COLLEGE AND UNIVERSITY SYSTEM (MNSCU)	[Symbol]		
		UNIVERSITY OF MN SYSTEM	[Symbol]	UNIVERSITY OF MN SYSTEM	[Symbol]		
		FAIRGROUNDS	[Symbol]	FAIRGROUNDS	[Symbol]		
		CULTURAL FEATURES	[Symbol]	CULTURAL FEATURES	[Symbol]		
		STATE HISTORICAL MARKER	[Symbol]	STATE HISTORICAL MARKER	[Symbol]		
		HISTORIC DISTRICT	[Symbol]	HISTORIC DISTRICT	[Symbol]		
		HISTORIC SITE	[Symbol]	HISTORIC SITE	[Symbol]		
		MONUMENT	[Symbol]	MONUMENT	[Symbol]		



Population (U.S. Census 2010): 334



To request information from this document in an alternative format, call 651-366-4718 or 1-800-657-3774 (Greater Minnesota); 711 or 1-800-627-3529 (Minnesota Relay). You may also send an e-mail to ADRequest.dot@state.mn.us. (Please request at least one week in advance.)