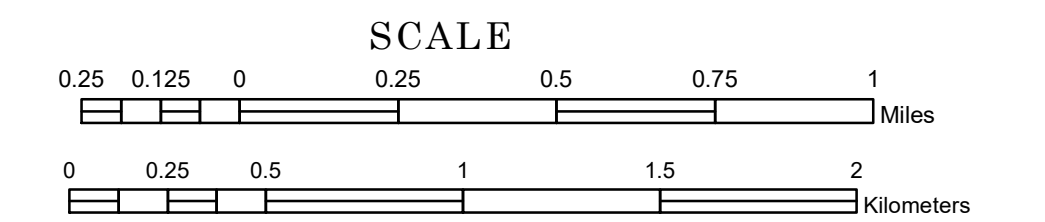


TOWNSHIP OF CAMP LAKE

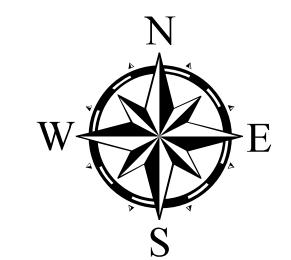
PREPARED BY THE
MINNESOTA DEPARTMENT OF TRANSPORTATION
OFFICE OF TRANSPORTATION SYSTEM MANAGEMENT

IN COOPERATION WITH
U.S. DEPARTMENT OF TRANSPORTATION
FEDERAL HIGHWAY ADMINISTRATION



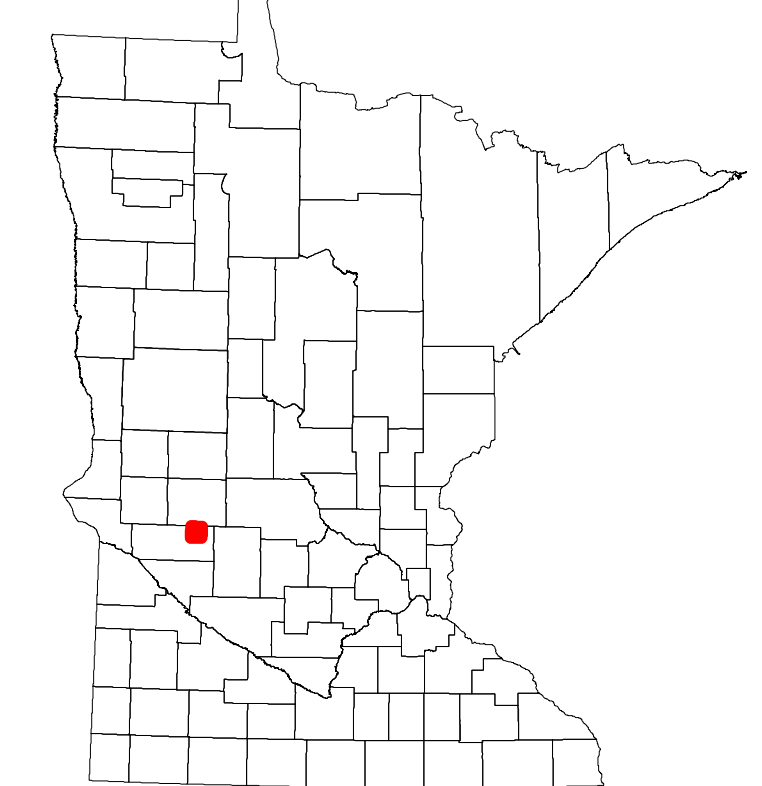
1 in = 1,600 ft
2024

Projection:
Transverse Mercator
NAD 1986
UTM Zone 15

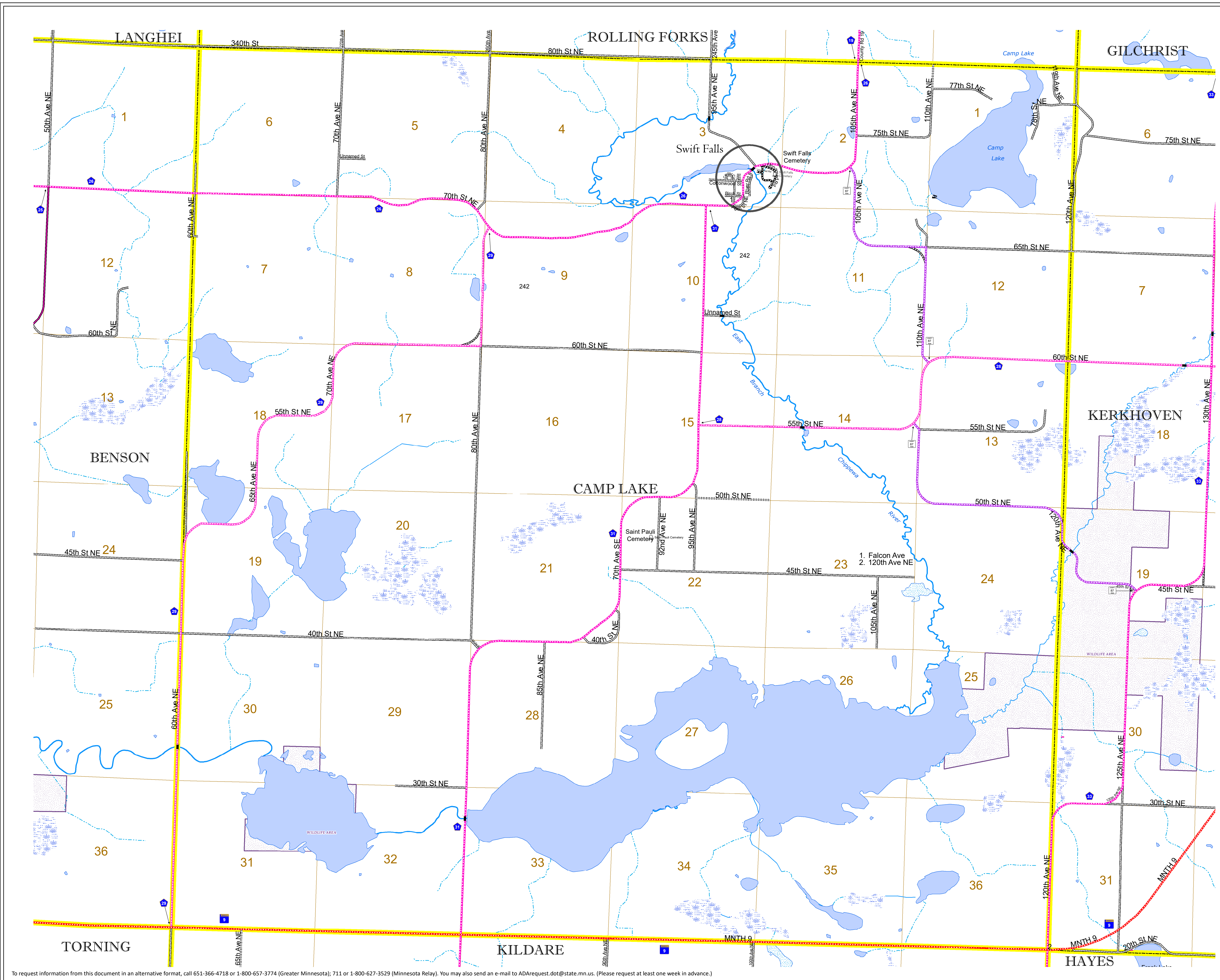


North American Datum
of 1986

ROAD AND ROADWAY FEATURES		BOUNDARY FEATURES	
INTERSTATE		CONCRETE	
US HIGHWAY		BITUMINOUS	
MN HIGHWAY		GRAVEL	
COUNTY STATE AID HIGHWAY		DIRT/UNIMPROVED	
COUNTY ROAD		OTHER	
TOWNSHIP ROAD		UNKNOWN	
UNORGANIZED TERRITORY ROAD			
OTHER ROADS		RAMP OR CONNECTOR	
Municipal		INTERSTATE EXIT	
Private		GREAT RIVER ROAD	
National Monument			
National Park			
National Wildlife			
State Game			
State Park			
Preserve			
RAILROAD AND RAILWAY FEATURES		AVIATION FEATURES	
EMPIRE BUILDER STATION (AMTRAK)		COMMERCIAL AIRPORT	
NORTHSTAR STATION (COMMUTER)		GENERAL AIRPORT	
		AIRSTRIP	
		SEAPLANE	
		AIRPORT RUNWAY	
INFRASTRUCTURE FEATURES		CITY CENTERS	
LONG BRIDGE (200' OR GREATER SPAN)		STATE CAPITAL	
MAJOR BRIDGE (20' TO 200' SPAN)		COUNTY SEAT	
MINOR BRIDGE (5' TO 20' SPAN)		CITY CENTER	
DAM		UNINCORPORATED COMMUNITY	
LOCK-AND-DAM			
PUBLIC SERVICE FEATURES		HYDROLOGIC FEATURES	
MNDOT OFFICE		WILDLIFE AREA	
MNDOT TRUCK STATION		WILDLIFE REFUGIA AREA	
HIGHWAY PATROL DISTRICT OFFICE		WILDLIFE MANAGEMENT AREA	
STATE TRAVEL INFORMATION CENTER		RIVER OR STREAM (PERMANENT)	
REST AREA (FULL SERVICE)		LAKE, POND OR RESERVOIR	
REST AREA (VAULT TOILET)		STREAM (INTERMITTENT)	
WAYSIDE (VAULT OR PIT TOILET)		DRAINAGE DITCH	
PARK AND RIDE LOT		WETLAND	
PORT OF ENTRY		ISLAND OR LAND	
PUBLIC ACCESS POINT		REGIONAL WATERSHED	
MN STATE COLLEGE AND UNIVERSITY SYSTEM (MNSCU)			
UNIVERSITY OF MN SYSTEM			
FAIRGROUNDS			
CULTURAL FEATURES			
STATE HISTORICAL MARKER			
HISTORIC DISTRICT			
HISTORIC SITE			
MONUMENT			



Population (U.S. Census 2010): 213



To request information from this document in an alternative format, call 651-366-4718 or 1-800-657-3774 (Greater Minnesota); 711 or 1-800-627-3529 (Minnesota Relay). You may also send an e-mail to ADRequest.dot@state.mn.us. (Please request at least one week in advance.)