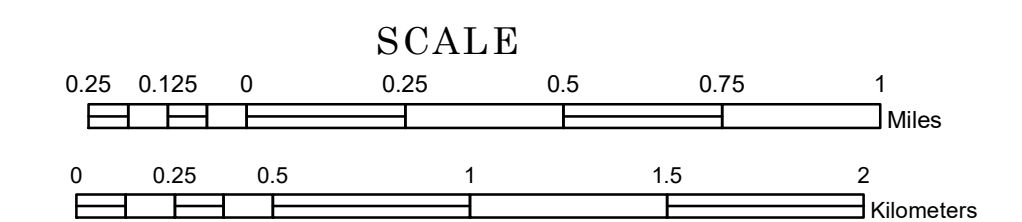


# TOWNSHIP OF BERTHA

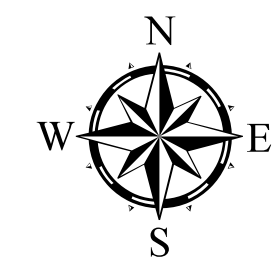
PREPARED BY THE  
MINNESOTA DEPARTMENT OF TRANSPORTATION  
OFFICE OF TRANSPORTATION SYSTEM MANAGEMENT

IN COOPERATION WITH  
U.S. DEPARTMENT OF TRANSPORTATION  
FEDERAL HIGHWAY ADMINISTRATION



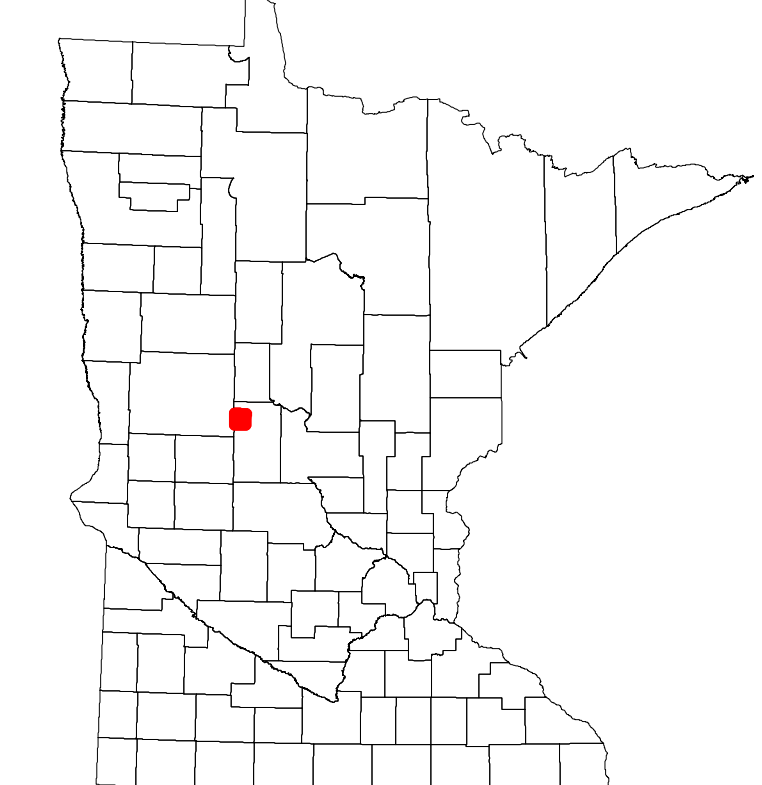
2023

Projection:  
Transverse Mercator  
NAD 1986  
UTM Zone 15

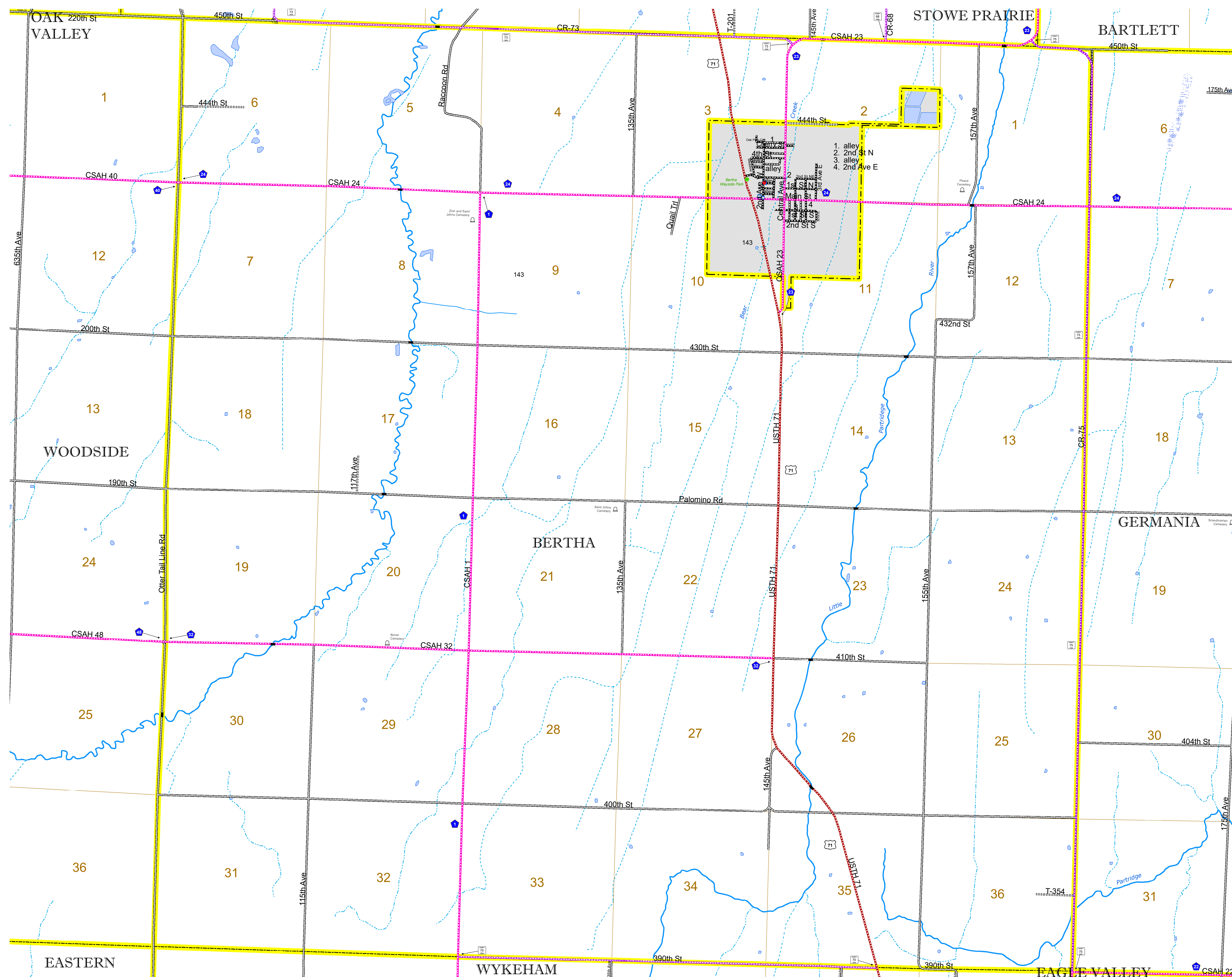


North American Datum  
of 1986

ROAD AND ROADWAY FEATURES		BOUNDARY FEATURES	
INTERSTATE	CONCRETE	TRIBAL LAND	STATE OF MINNESOTA
US HIGHWAY	BITUMINOUS	COUNTY	MUNICIPALITY
MN HIGHWAY	GRAVEL	UNORGANIZED TERRITORY	FEDERAL ADJUSTED URBAN AREA (2014)
COUNTY STATE AID HIGHWAY	DIRT/UNIMPROVED	CIVIL TOWNSHIP	CONGRESSIONAL TOWNSHIP
COUNTY ROAD	OTHER	SECTION	MILITARY
TOWNSHIP ROAD	UNKNOWN	VOYAGEURS NATIONAL PARK	BOUNDARY WATERS CANOE AREA WILDERNESS
UNORGANIZED TERRITORY ROAD		STATE PARK	REGIONAL PARK
OTHER ROADS		NATIONAL FOREST	NATIONAL AND STATE FOREST
Municipal	RAMP OR CONNECTOR	STATE FOREST	NATIONAL TRAIL
Private	INTERSTATE EXIT	WILDLIFE REFUGE AREA	WILDLIFE MANAGEMENT AREA
Nature Service	AIRPORT RUNWAY	HYDROLOGIC FEATURES	RIVER OR STREAM (PERENNIAL)
Mulden	AVIATION FEATURES	LAKE, POND OR RESERVOIR	STREAM (INTERMITTENT)
	GENERAL AIRPORT	DRAINAGE DITCH	WETLAND
	AIRSTRIP	ISLAND OR LAND	REGIONAL WATERSHED
	SEAPLANE		
	RAILROAD AND RAILWAY FEATURES		
	EMPIRE BUILDER STATION (AMTRAK)		
	NORTHSTAR STATION (COMMUTER)		
	LIGHT RAIL		
	BLUE LINE		
	GREEN LINE		
	INFRASTRUCTURE FEATURES		
	LONG BRIDGE (200' OR GREATER SPAN)		
	MAJOR BRIDGE (20' TO 200' SPAN)		
	MINOR BRIDGE (5' TO 20' SPAN)		
	DAM		
	LOCK-AND-DAM		
	CITY CENTERS		
	STATE CAPITAL		
	COUNTY SEAT		
	CITY CENTER		
	UNINCORPORATED COMMUNITY		
	PUBLIC SERVICE FEATURES		
	MNDOT OFFICE		
	MNDOT TRUCK STATION		
	HIGHWAY PATROL DISTRICT OFFICE		
	STATE TRAVEL INFORMATION CENTER		
	REST AREA (FULL SERVICE)		
	REST AREA (VAULT TOILET)		
	WAYSIDE (VAULT OR PITY TOILET)		
	PARK AND RIDE LOT		
	PORT OF ENTRY		
	PUBLIC ACCESS POINT		
	MN STATE COLLEGE AND UNIVERSITY SYSTEM (MNSCU)		
	UNIVERSITY OF MN SYSTEM		
	FAIRGROUNDS		
	CULTURAL FEATURES		
	STATE HISTORICAL MARKER		
	HISTORIC DISTRICT		
	HISTORIC SITE		
	MONUMENT		



Population (U.S. Census 2010): 408



To request information from this document in an alternative format, call 651-366-4718 or 1-800-657-3774 (Greater Minnesota); 711 or 1-800-627-3529 (Minnesota Relay). You may also send an e-mail to ADArequest.dot@state.mn.us. (Please request at least one week in advance.)