

RIVERDALE

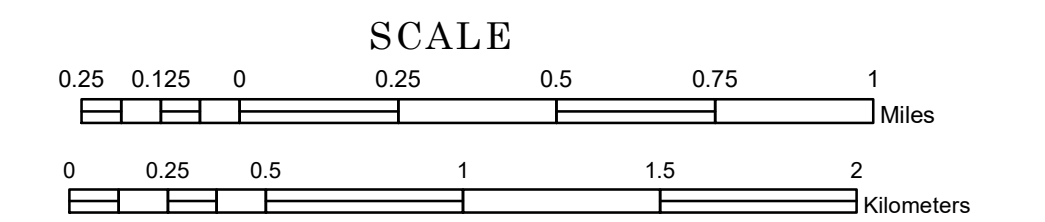
MADELIA

LINCOLN

TOWNSHIP OF FIELDON

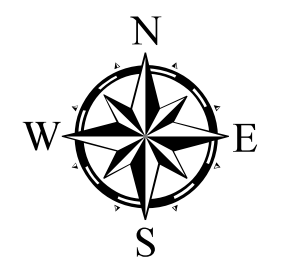
PREPARED BY THE
MINNESOTA DEPARTMENT OF TRANSPORTATION
OFFICE OF TRANSPORTATION SYSTEM MANAGEMENT

IN COOPERATION WITH
U.S. DEPARTMENT OF TRANSPORTATION
FEDERAL HIGHWAY ADMINISTRATION



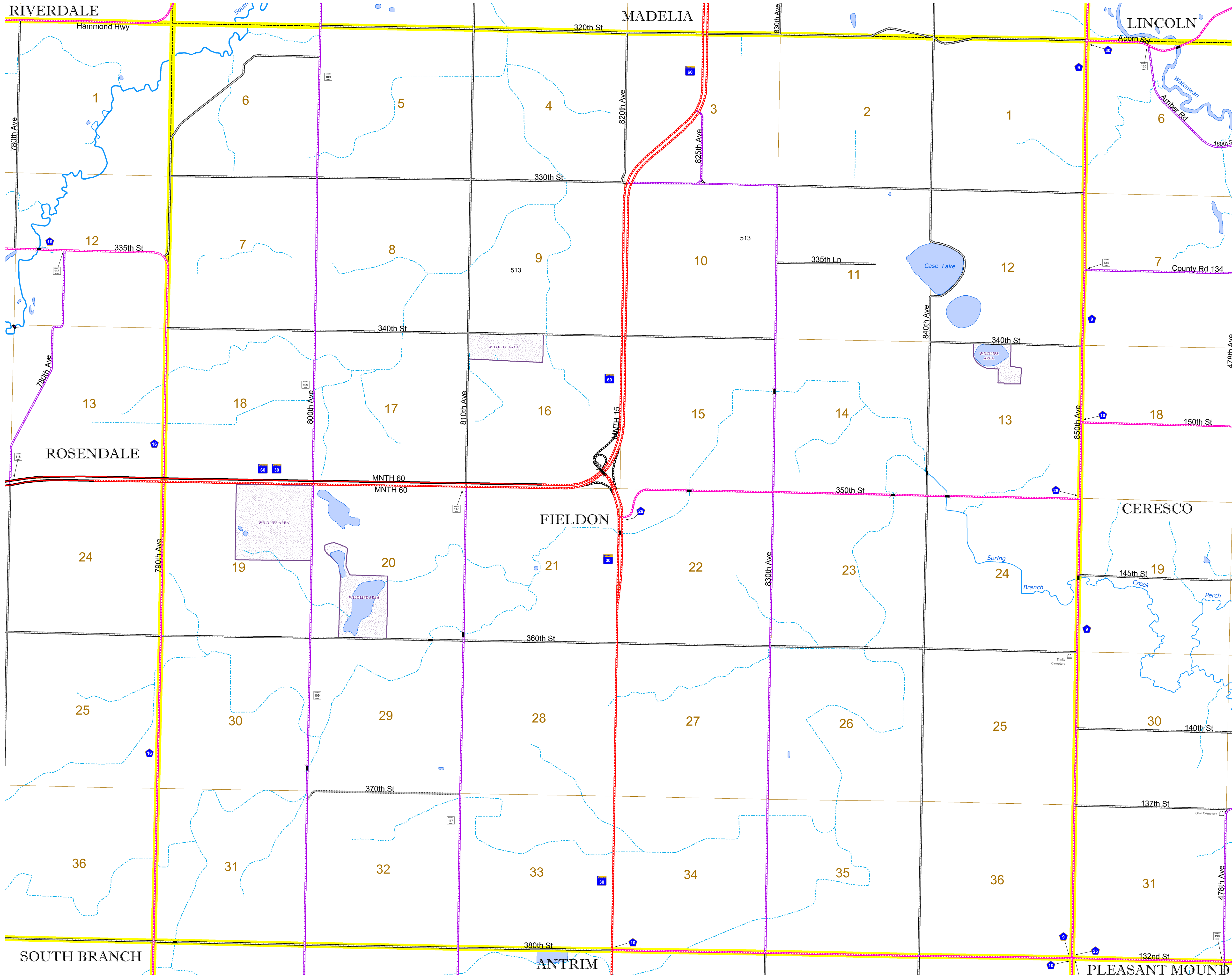
1 in = 1,600 ft

2023

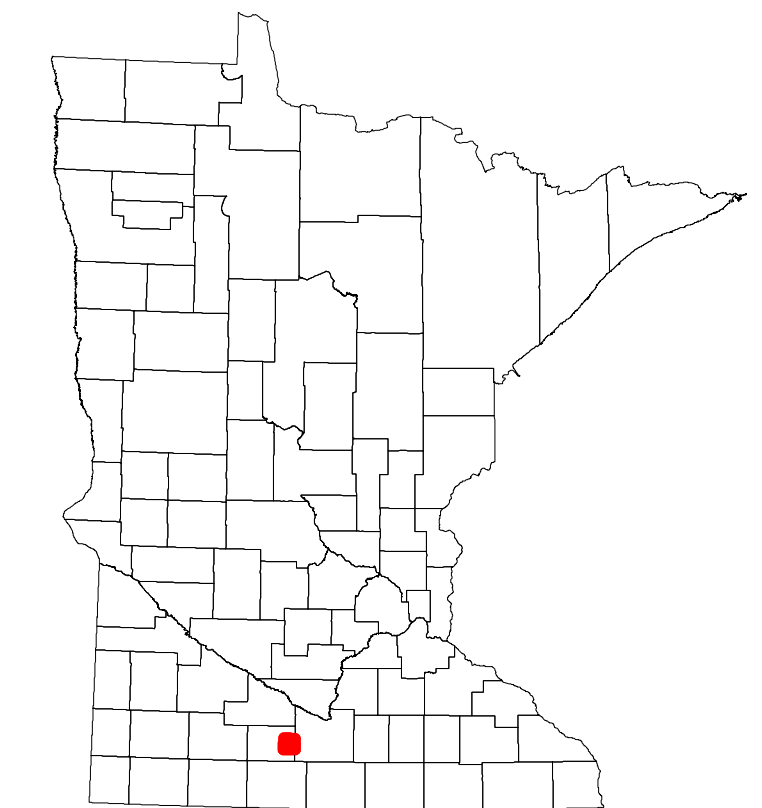


North American Datum
of 1986

Projection:
Transverse Mercator
NAD 1986
UTM Zone 15



ROAD AND ROADWAY FEATURES		AVIATION FEATURES	
INTERSTATE	CONCRETE	COMMERCIAL AIRPORT	GENERAL AIRPORT
US HIGHWAY	BITUMINOUS	AIRSTRIP	SEAPLANE
MN HIGHWAY	GRAVEL	AIRPORT RUNWAY	AIRPORT RUNWAY
COUNTY STATE AID HIGHWAY	DIRT/UNIMPROVED		
COUNTY ROAD	OTHER		
TOWNSHIP ROAD	UNKNOWN		
UNORGANIZED TERRITORY ROAD			
OTHER ROADS			
Municipal	RAMP OR CONNECTOR		
Private	INTERSTATE EXIT		
National Monument	GREAT RIVER ROAD		
National Park			
National Wildlife			
State Game			
State Park			
Preserve			
RAILROAD AND RAILWAY FEATURES		BOUNDARY FEATURES	
EMPIRE BUILDER STATION (AMTRAK)	COMMERCIAL AIRPORT	TRIBAL LAND	STATE OF MINNESOTA
NORTHSTAR STATION (COMPUTER)	GENERAL AIRPORT	COUNTY	MUNICIPALITY
	AIRSTRIP	UNINCORPORATED TOWNSHIP	CIVIL TOWNSHIP
	SEAPLANE	CONGRESSIONAL TOWNSHIP	SECTION
	AIRPORT RUNWAY	MILITARY	MILITARY
		VOYAGEURS NATIONAL PARK	BOUNDRARY WATERS CANOE AREA WILDERNESS
		STATE PARK	REGIONAL PARK
		NATIONAL FOREST	NATIONAL AND STATE FOREST
		STATE FOREST	NATIONAL TRAIL
		WILDLIFE REFUGE AREA	WILDLIFE MANAGEMENT AREA
		WILDLIFE MANAGEMENT AREA	HYDROLOGIC FEATURES
		RIVER OR STREAM (PERENNIAL)	LAKE, POND OR RESERVOIR
		STREAM (INTERMITTENT)	DRAINAGE DITCH
		WETLAND	ISLAND OR LAND
		REGIONAL WATERSHED	



Population (U.S. Census 2010): 209

To request information from this document in an alternative format, call 651-366-4718 or 1-800-657-3774 (Greater Minnesota); 711 or 1-800-627-3529 (Minnesota Relay). You may also send an e-mail to ADAREquest.dot@state.mn.us. (Please request at least one week in advance.)