

TOWNSHIP OF MINNESOTA FALLS

PREPARED BY THE
MINNESOTA DEPARTMENT OF TRANSPORTATION
OFFICE OF TRANSPORTATION SYSTEM MANAGEMENT

IN COOPERATION WITH
U.S. DEPARTMENT OF TRANSPORTATION
FEDERAL HIGHWAY ADMINISTRATION



1 in = 1,600 ft

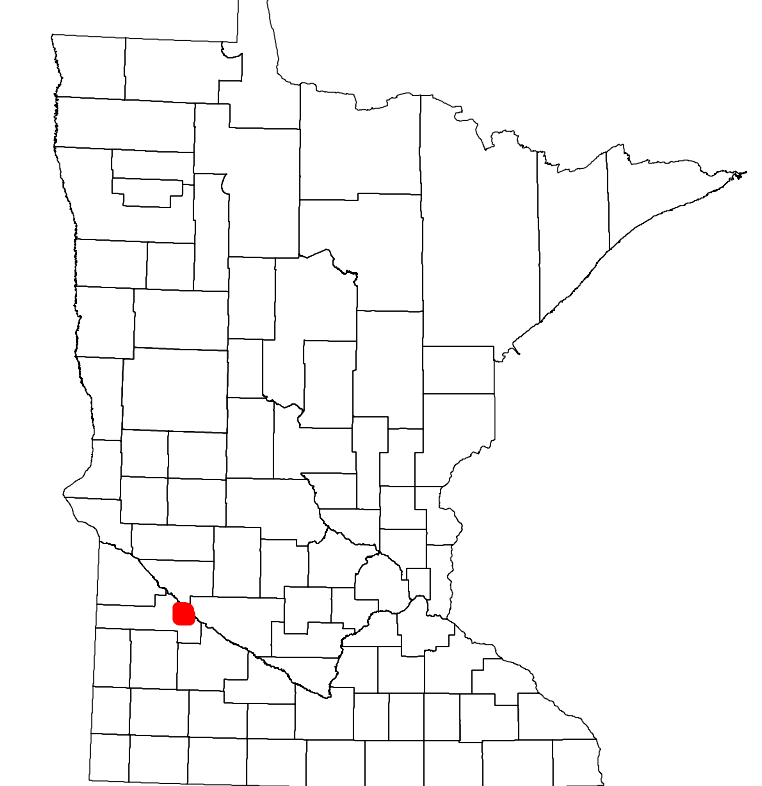
2024

Projection:
Transverse Mercator
NAD 1986
UTM Zone 15

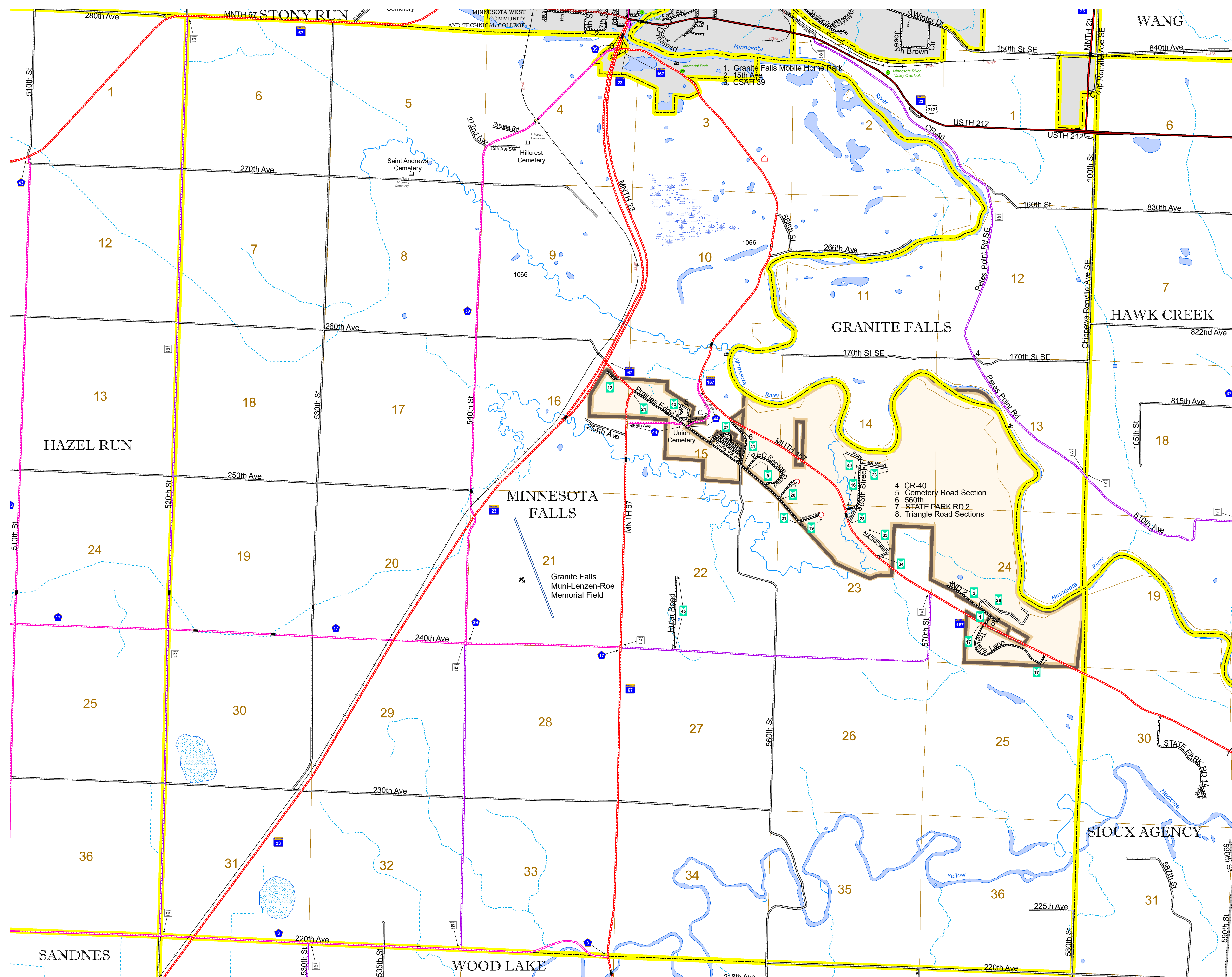


North American Datum
of 1986

| ROAD AND ROADWAY FEATURES | | BOUNDARY FEATURES | |
|----------------------------|-------------------|---------------------------------------|---------------------------------------|
| INTERSTATE | CONCRETE | TRIBAL LAND | STATE OF MINNESOTA |
| US HIGHWAY | BITUMINOUS | STATE OF MINNESOTA | COUNTY |
| MN HIGHWAY | GRAVEL | COUNTY | MUNICIPALITY |
| COUNTY STATE AID HIGHWAY | DIRT/UNIMPROVED | MUNICIPALITY | UNINCORPORATED TOWNSHIP |
| COUNTY ROAD | OTHER | UNINCORPORATED TOWNSHIP | FEDERAL ADJUSTED URBAN AREA (2014) |
| TOWNSHIP ROAD | UNKNOWN | FEDERAL ADJUSTED URBAN AREA (2014) | CIVIL TOWNSHIP |
| UNORGANIZED TERRITORY ROAD | | CIVIL TOWNSHIP | CONGRESSIONAL TOWNSHIP |
| OTHER ROADS | | CONGRESSIONAL TOWNSHIP | SECTION |
| Municipal | RAMP OR CONNECTOR | SECTION | MILITARY |
| Private | INTERSTATE EXIT | MILITARY | VOYAGEURS NATIONAL PARK |
| National Monument | GREAT RIVER ROAD | VOYAGEURS NATIONAL PARK | BOUNDARY WATERS CANOE AREA WILDERNESS |
| National Park | | BOUNDARY WATERS CANOE AREA WILDERNESS | STATE PARK |
| National Wildlife Refuge | | STATE PARK | REGIONAL PARK |
| State Park | | REGIONAL PARK | NATIONAL FOREST |
| Preserve | | NATIONAL FOREST | NATIONAL AND STATE FOREST |
| | | NATIONAL AND STATE FOREST | STATE FOREST |
| | | STATE FOREST | NATIONAL TRAIL |
| | | NATIONAL TRAIL | WILDLIFE REFUGUE AREA |
| | | WILDLIFE REFUGUE AREA | WILDLIFE MANAGEMENT AREA |
| | | WILDLIFE MANAGEMENT AREA | HYDROLOGIC FEATURES |
| | | HYDROLOGIC FEATURES | RIVER OR STREAM (PERMANENT) |
| | | RIVER OR STREAM (PERMANENT) | LAKE, POND OR RESERVOIR |
| | | LAKE, POND OR RESERVOIR | STREAM (INTERMITTENT) |
| | | STREAM (INTERMITTENT) | DRAINAGE DITCH |
| | | DRAINAGE DITCH | WETLAND |
| | | WETLAND | ISLAND OR LAND |
| | | ISLAND OR LAND | REGIONAL WATERSHED |
| | | REGIONAL WATERSHED | |



Population (U.S. Census 2010): 429



To request information from this document in an alternative format, call 651-366-4718 or 1-800-657-3774 (Greater Minnesota); 711 or 1-800-627-3529 (Minnesota Relay). You may also send an e-mail to ADARquest.dot@state.mn.us. (Please request at least one week in advance.)