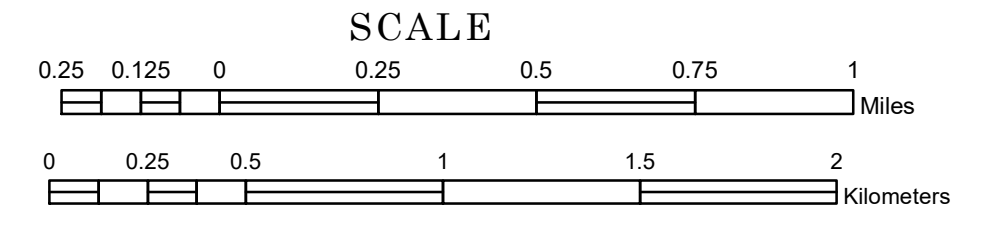


# TOWNSHIP OF NORMAN

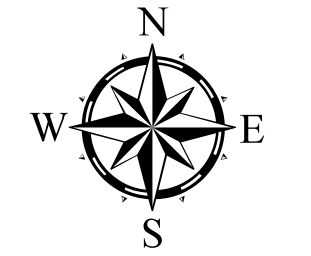
PREPARED BY THE  
MINNESOTA DEPARTMENT OF TRANSPORTATION  
OFFICE OF TRANSPORTATION SYSTEM MANAGEMENT

IN COOPERATION WITH  
U.S. DEPARTMENT OF TRANSPORTATION  
FEDERAL HIGHWAY ADMINISTRATION



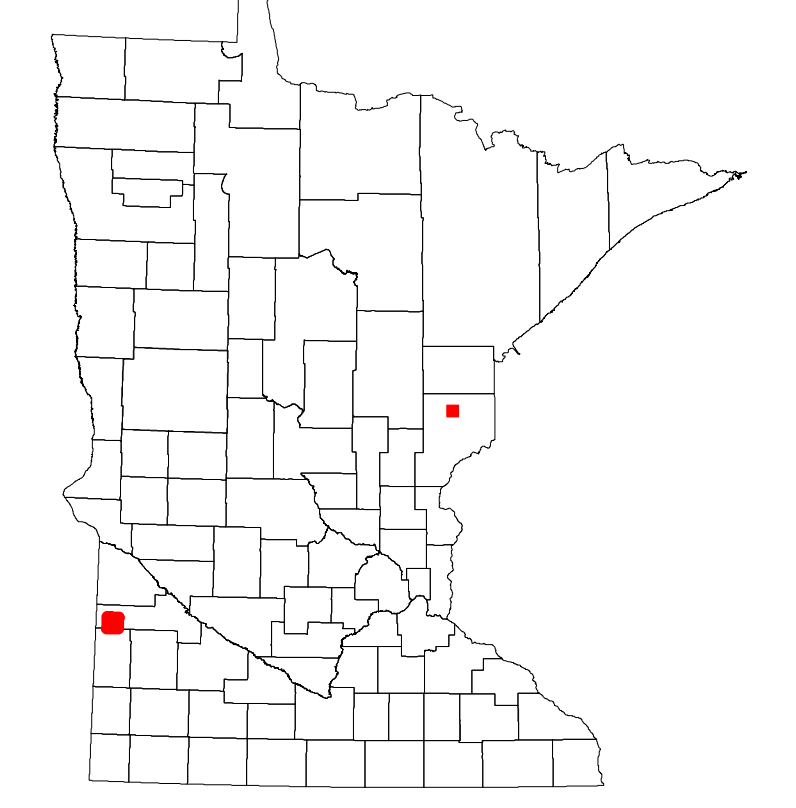
2024

Projection:  
Transverse Mercator  
NAD 1986  
UTM Zone 15

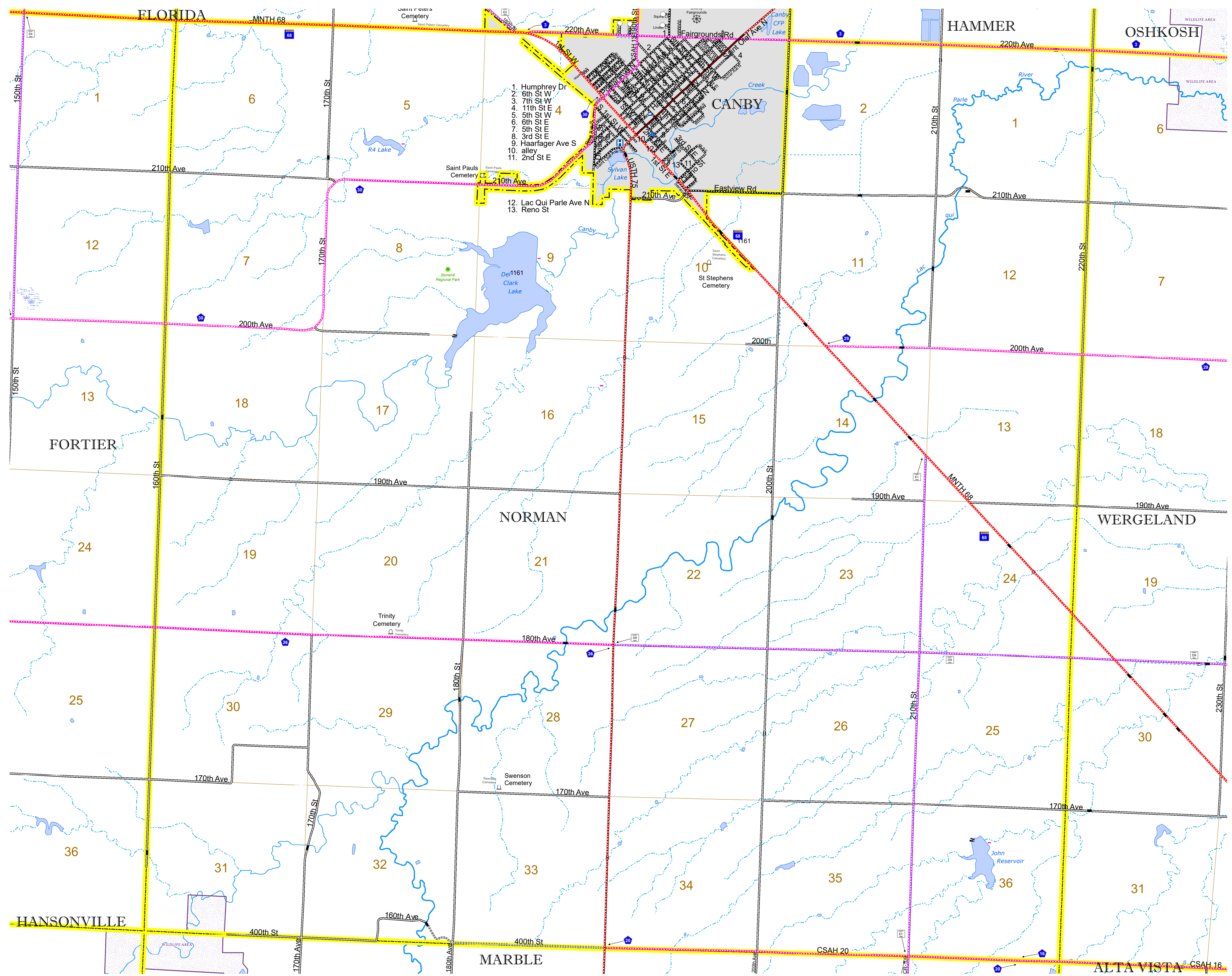


North American Datum  
of 1986

ROAD AND ROADWAY FEATURES		BOUNDARY FEATURES	
INTERSTATE		CONCRETE	
US HIGHWAY		BITUMINOUS	
MN HIGHWAY		GRAVEL	
COUNTY STATE AID HIGHWAY		DIRT/UNIMPROVED	
COUNTY ROAD		OTHER	
TOWNSHIP ROAD		UNKNOWN	
UNORGANIZED TERRITORY ROAD		RAMP OR CONNECTOR	
OTHER ROADS		INTERSTATE EXIT	
Municipal		GENERAL AIRPORT	
Private		AIRSTRIP	
National Monument		SEAPLANE	
Nature Service		AIRPORT RUNWAY	
Muslim		NATIONAL WILDLIFE PRESERVE	
National Forest		STATE PARK	
State Park		TRIBAL LAND	
Preserve		STATE OF MINNESOTA	
RAILROAD AND RAILWAY FEATURES		AVIATION FEATURES	
EMPIRE BUILDER STATION (AMTRAK)		COMMERCIAL AIRPORT	
NORTHSTAR STATION (COMPUTER)		GENERAL AIRPORT	
LIGHT RAIL		AIRSTRIP	
BLUE LINE		SEAPLANE	
GREEN LINE		AIRPORT RUNWAY	
INFRASTRUCTURE FEATURES		BOUNDARY FEATURES	
LONG BRIDGE (300' OR GREATER SPAN)		TRIBAL LAND	
MAJOR BRIDGE (20' TO 300' SPAN)		STATE OF MINNESOTA	
MINOR BRIDGE (5' TO 20' SPAN)		COUNTY	
DAM		MUNICIPALITY	
LOCK AND DAM		UNORGANIZED TERRITORY	
CITY CENTERS		FEDERAL ADJUSTED URBAN AREA (2014)	
STATE CAPITAL		CIVIL TOWNSHIP	
COUNTY SEAT		CONGRESSIONAL TOWNSHIP	
CITY CENTER		SECTION	
UNINCORPORATED COMMUNITY		MILITARY	
PUBLIC SERVICE FEATURES		VOYAGEURS NATIONAL PARK	
MNDOT OFFICE		BOUNDARY WATERS CANOE AREA WILDERNESS	
MNDOT TRUCK STATION		STATE PARK	
HIGHWAY PATROL DISTRICT OFFICE		REGIONAL PARK	
STATE TRAVEL INFORMATION CENTER		NATIONAL FOREST	
REST AREA (FULL SERVICE)		NATIONAL AND STATE FOREST	
REST AREA (VAULT TOILET)		STATE FOREST	
WAYSIDE (VAULT OR PIT TOILET)		NATIONAL TRAIL	
PARK AND RIDE LOT		WILDLIFE REFUGUE AREA	
PORT OF ENTRY		WILDLIFE MANAGEMENT AREA	
PUBLIC ACCESS POINT		HYDROLOGIC FEATURES	
MN STATE COLLEGE AND UNIVERSITY SYSTEM (MNSCU)		RIVER OR STREAM (PERMANENT)	
UNIVERSITY OF MN SYSTEM		LAKE, POND OR RESERVOIR	
FAIRGROUNDS		STREAM (INTERMITTENT)	
CULTURAL FEATURES		DRAINAGE DITCH	
STATE HISTORICAL MARKER		WETLAND	
HISTORIC DISTRICT		ISLAND OR LAND	
HISTORIC SITE		REGIONAL WATERSHED	
MONUMENT			



Population (U.S. Census 2010): 264



To request information from this document in an alternative format, call 651-366-4718 or 1-800-657-3774 (Greater Minnesota); 711 or 1-800-627-3529 (Minnesota Relay). You may also send an e-mail to ADArequest.dot@state.mn.us. (Please request at least one week in advance.)