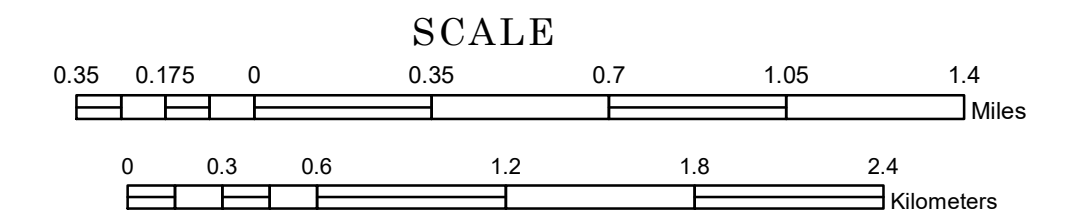


# TOWNSHIP OF SIOUX AGENCY

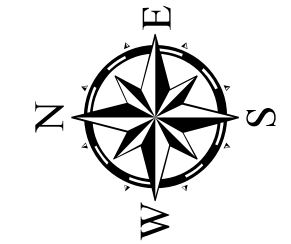
PREPARED BY THE  
MINNESOTA DEPARTMENT OF TRANSPORTATION  
OFFICE OF TRANSPORTATION SYSTEM MANAGEMENT

IN COOPERATION WITH  
U.S. DEPARTMENT OF TRANSPORTATION  
FEDERAL HIGHWAY ADMINISTRATION



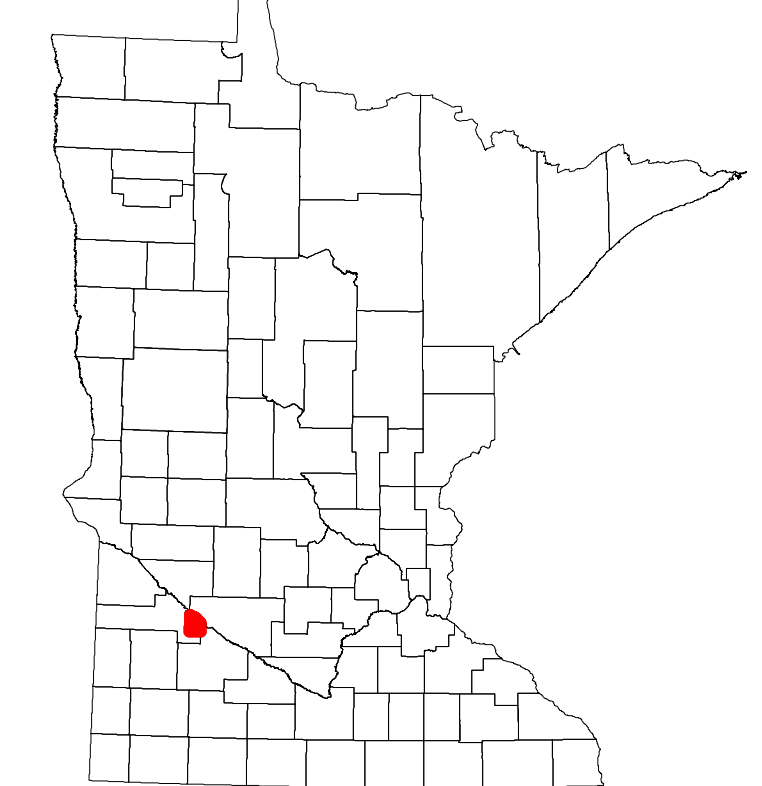
1 in = 2,000 ft  
**2024**

Projection:  
Transverse Mercator  
NAD 1986  
UTM Zone 15

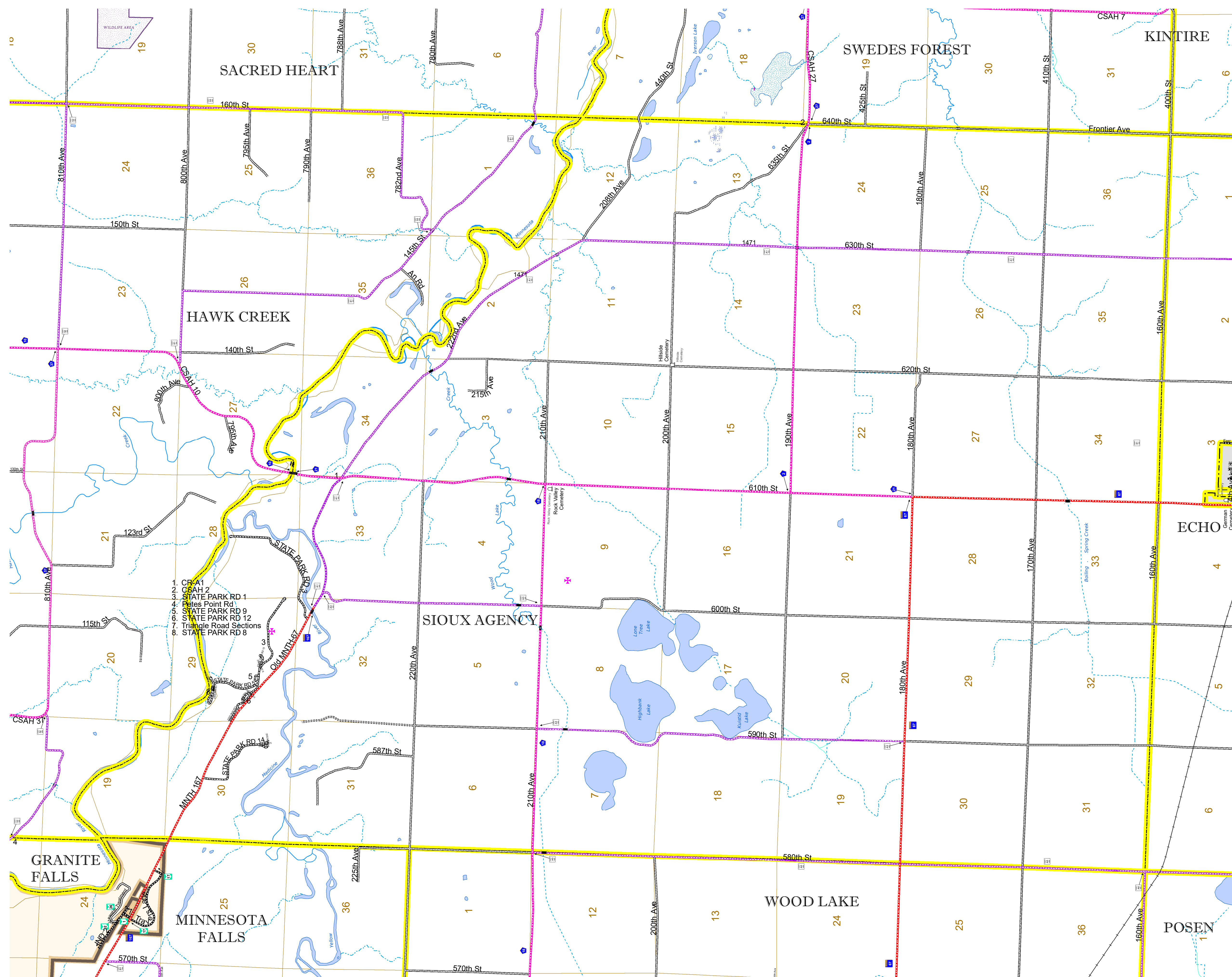


North American Datum  
of 1986

ROAD AND ROADWAY FEATURES	
INTERSTATE	CONCRETE
US HIGHWAY	BITUMINOUS
MN HIGHWAY	GRAVEL
COUNTY STATE AID HIGHWAY	DIRT/UNIMPROVED
TOWNSHIP ROAD	OTHER
COUNTY ROAD	UNKNOWN
UNORGANIZED TERRITORY ROAD	
OTHER ROADS	RAMP OR CONNECTOR
Municipal	Private
National Monument	National Wildlife Refuge
State Game	State Park
Present	Present
RAILROAD AND RAILWAY FEATURES	
EMPIRE BUILDER STATION (AMTRAK)	COMMERCIAL AIRPORT
NORTHSTAR STATION (COMPUTER)	GENERAL AIRPORT
SEAPLANE	AIRSTRIP
AIRPORT RUNWAY	SEAPLANE
BOUNDARY FEATURES	BOUNDARY FEATURES
TRIAL LAND	STATE OF MINNESOTA
COUNTY	MUNICIPALITY
UNINCORPORATED TERRITORY	FEDERAL ADJUSTED URBAN AREA (2014)
CIVIL TOWNSHIP	CONGRESSIONAL TOWNSHIP
SECTION	MILITARY
VOYAGEURS NATIONAL PARK	BOUNDARY WATERS CANOE AREA WILDERNESS
STATE PARK	NATIONAL FOREST
NATIONAL TRAIL	NATIONAL AND STATE FOREST
STATE FOREST	WILDLIFE REFUGUE AREA
WILDLIFE MANAGEMENT AREA	HYDROLOGIC FEATURES
RIVER OR STREAM (PERENNIAL)	LAKE, POND OR RESERVOIR
STREAM (INTERMITTENT)	DRAINAGE DITCH
WETLAND	ISLAND OR LAND
REGIONAL WATERSHED	



Population (U.S. Census 2010): 226



1. CR A1
2. CSAH 2
3. STATE PARK RD 1
4. Petes Point Rd
5. STATE PARK RD 9
6. STATE PARK RD 12
7. Triangle Road Sections
8. STATE PARK RD 8

To request information from this document in an alternative format, call 651-366-4718 or 1-800-657-3774 (Greater Minnesota); 711 or 1-800-627-3529 (Minnesota Relay). You may also send an e-mail to [ADArequest.dot@state.mn.us](mailto:ADArequest.dot@state.mn.us). (Please request at least one week in advance.)