

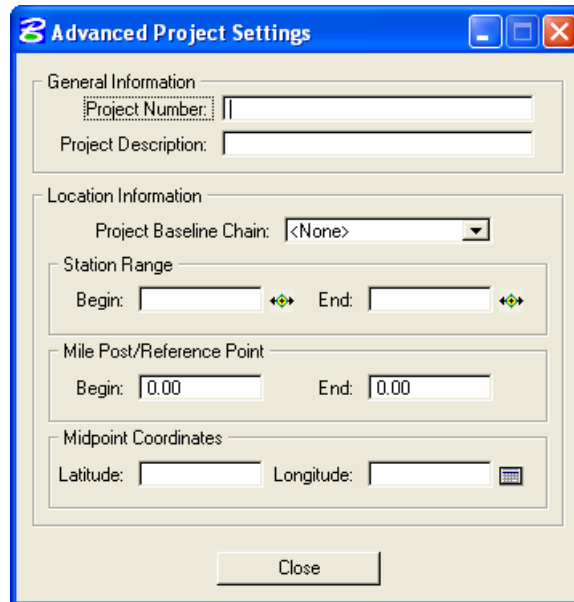
Quantity Manager - Advanced Project Settings

OBJECTIVES:	Additional project data information must be entered into the quantities database. This information is required by the Engineering Cost Data and Estimating Unit. This data is input using the Advanced Project Settings tool in the Design and Computation Manager tool.
OVERVIEW:	The Advanced Project Settings are set when exporting quantities from the Design and Computation Manager (Computation Results tool) to the QM database (.mdb file). While quantities for a project can be computed/exported multiple times throughout the life of the project, Advanced Project Settings only need to be set and exported one time during the process.

Step 1. Before exporting quantities to the .MDB file, toggle on and select the Open Advanced Project Settings dialog.



Within the Advanced Project Setting dialog:



- Step 2.** In the General Information portion, set the Project Number and Project Description to match the values listed on the project's title sheet.
- Step 3.** In the Location Information set/select the Project Baseline Chain to the mainline chain of the project.
- Step 4.** By default the beginning and ending station from the chain selected in Step 3 will populate the Station Range settings. These values can be changed by key-in or by selecting the icon(s) to select the location/station by data point in the design file.

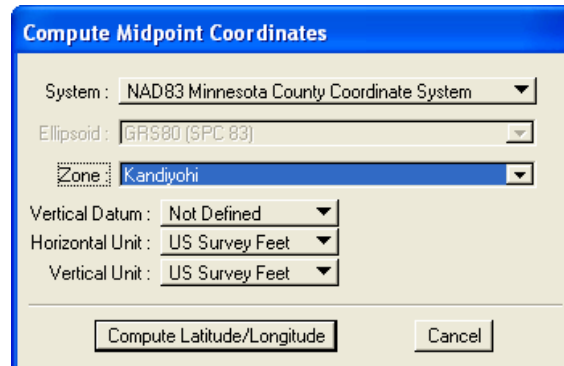


- Step 5.** Key in the Begin and End Mile Post/Reference Post data to match the values listed on the project's title sheet.

- Step 6.** To set the Midpoint Coordinates select the Compute Midpoint Coordinates icon.

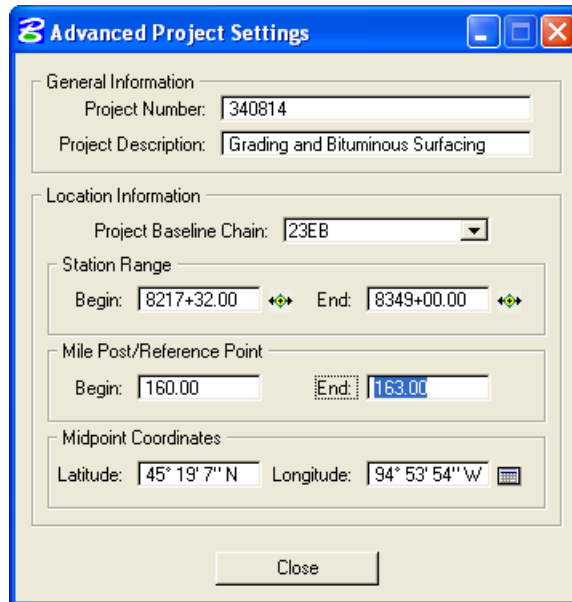


Within the Compute Midpoint Coordinates dialog:



- Step 7.** Set the System to NAD83 Minnesota County Coordinate System
- Step 8.** Set/Select the Zone to the County the project is located in.
- Step 9.** Set the Vertical Datum to: Not Defined
- Step 10.** Set the Horizontal Unit and Vertical Unit to: US Survey Feet
- Step 11.** Click the Compute Latitude/Longitude icon to populate the Midpoint Coordinates.

The Advanced Project Settings dialog is now fully populated.



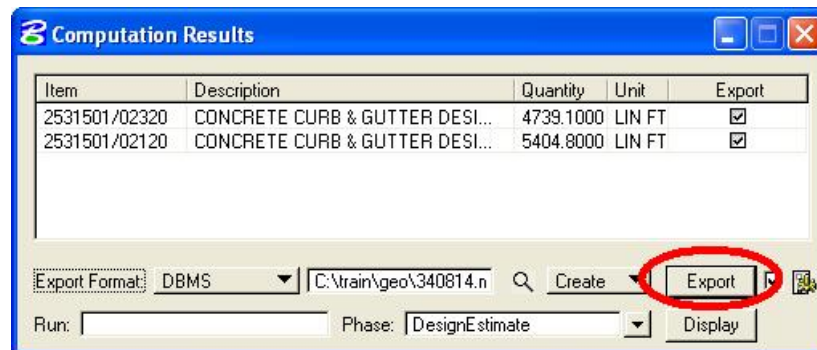
The Advanced Project Settings dialog box is shown with the following fields populated:

- General Information:**
 - Project Number: 340814
 - Project Description: Grading and Bituminous Surfacing
- Location Information:**
 - Project Baseline Chain: 23EB
 - Station Range:**
 - Begin: 8217+32.00
 - End: 8349+00.00
 - Mile Post/Reference Point:**
 - Begin: 160.00
 - End: 163.00
 - Midpoint Coordinates:**
 - Latitude: 45° 19' 7" N
 - Longitude: 94° 53' 54" W

A Close button is located at the bottom right of the dialog.

Step 12. Close out of the Advanced Project Setting dialog.

With these settings now set, the quantities can be exported to the QM (.mdb) database file.

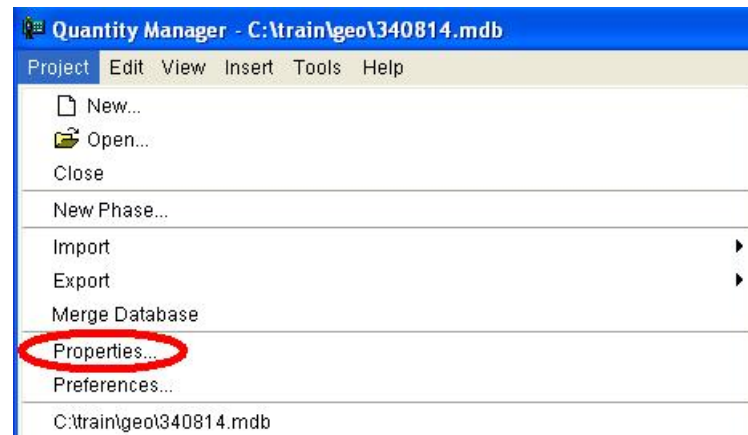


The Computation Results dialog box displays a table of items and their quantities. The 'Export' button is circled in red.

Item	Description	Quantity	Unit	Export
2531501/02320	CONCRETE CURB & GUTTER DESI...	4739.1000	LIN FT	<input checked="" type="checkbox"/>
2531501/02120	CONCRETE CURB & GUTTER DESI...	5404.8000	LIN FT	<input checked="" type="checkbox"/>

Below the table, the 'Export Format' is set to DBMS, and the file path is C:\train\geo\340814.n. The 'Export' button is circled in red. Other buttons include 'Create', 'Display', and 'Run'.

- Step 13.** After quantities have been exported to the database, check the database to verify that the advanced project settings have been set by checking the Project Properties in the Quantity Manager.

The screenshot shows the 'Project Properties' dialog box. It has a title bar 'Project Properties' and a close button. The 'Project' tab is selected. The 'General Information' section contains: 'Project Number: 340814', 'Description: Grading and Bituminous Surfacing', 'Unit System: ENGLISH' (with a dropdown arrow), and 'Spec Year:'. The 'Location Information' section contains: 'Project Chain: 23EB (JOB814.GPK)' (with a dropdown arrow). The 'Station Range' section contains: 'Begin: 8217+32' (with a dropdown arrow set to 1) and 'End: 8349+00' (with a dropdown arrow set to 1). The 'Mile Post / Reference Point' section contains: 'Begin: 160.000' and 'End: 163.000'. The 'Midpoint Coordinates' section contains: 'Latitude: 45° 19' 7" N' and 'Longitude: 94° 53' 54" W'. At the bottom right are 'OK' and 'Cancel' buttons.

The Advanced Project Settings only need to be set a single time. It is not necessary to repeat Steps 1-12 every time items are exported to the QM database file.